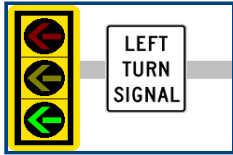


GENERAL NOTE:
 WHILE NOT SHOWN IN DETAIL IN THESE EXHIBITS, PROJECT DESIGNS INCLUDE INSTALLATION OF THE FOLLOWING FEATURES THROUGHOUT THE PROJECT LIMITS:

- ADA-COMPLIANT PEDESTRIAN SIGNALS WITH AUDIBLE MESSAGING
- ADA CURB RAMP UPGRADES AT 70+ LOCATIONS
- ADDITION OF HI-VISIBILITY TRAFFIC SIGNAL BACKPLATES W/ YELLOW REFLECTIVE STRIPS AT ALL SIGNALIZED INTERSECTIONS WITHIN PROJECT LIMITS
- EMERGENCY VEHICLE PREEMPTION TRAFFIC SIGNAL UPGRADES
- PAVEMENT REPAIRS AND AND RESURFACING ALONG ALL ROADWAYS IN PROJECT LIMITS



PROTECTED ONLY LEFT-TURN SIGNAL PHASING FOR NORTHBOUND LEFTS

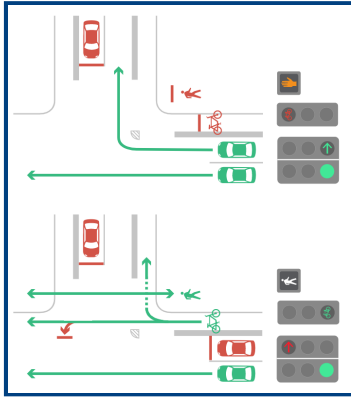


DIAGRAM OF PROPOSED SOUTHBOUND BICYCLE AND VEHICLE RIGHT TURN SIGNAL PHASING

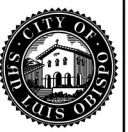
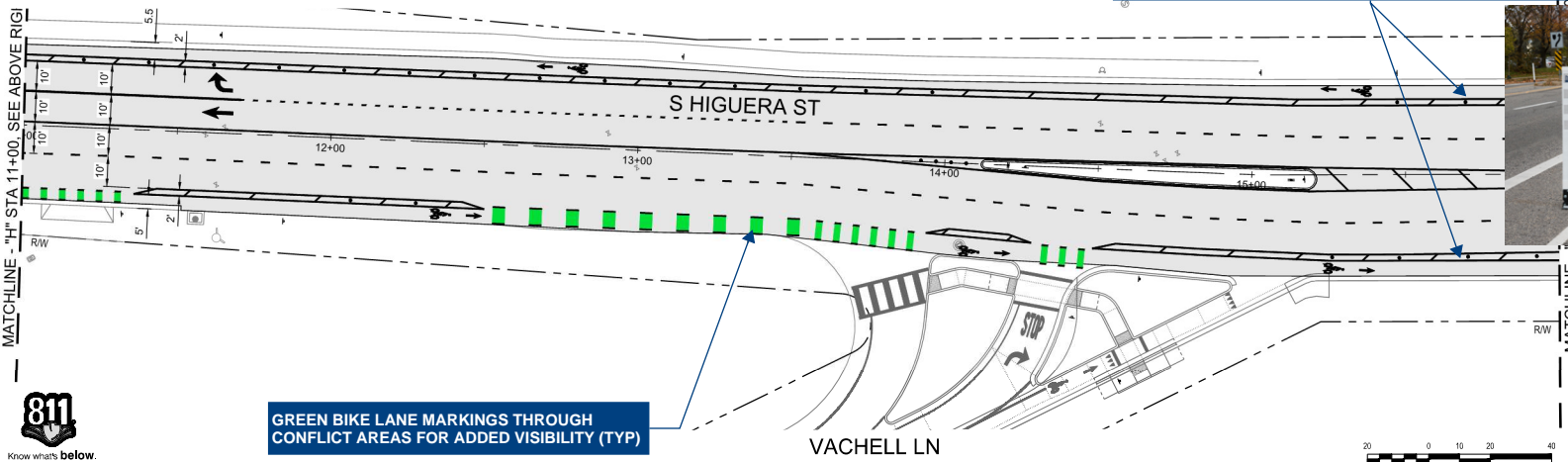
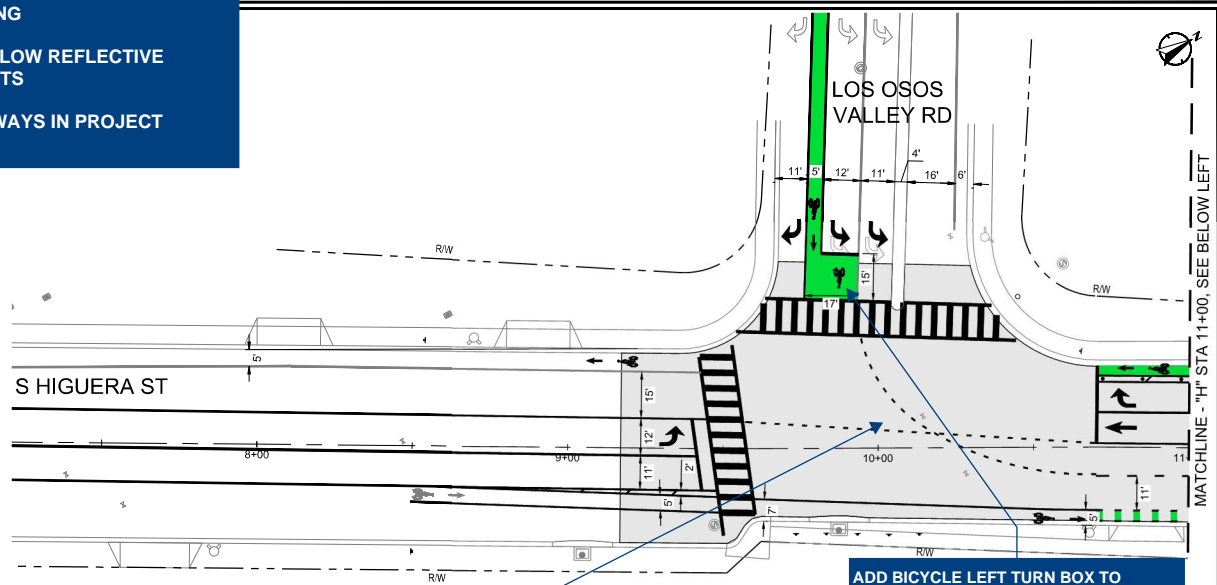
TRAFFIC SIGNAL MODIFICATIONS:

- PROTECTED ONLY LEFT TURN ARROWS FOR NORTHBOUND HIGUERA APPROACH
- ADD DEDICATED BIKE SIGNAL PHASE FOR SOUTHBOUND HIGUERA (SOUTHBOUND RIGHT-TURN SEPARATED WITH RED ARROW DURING BIKE SIGNAL PHASE). INCLUDE "NO RIGHT TURN ON RED" DURING BIKE SIGNAL
- ADD ADA-COMPLIANT PEDESTRIAN SIGNALS

ADD BICYCLE LEFT TURN BOX TO IMPROVE ACCESS & VISIBILITY FOR CYCLISTS TURNING FROM EB LOS OSOS VALLEY RD TO NB HIGUERA ST

BUFFERED BIKE LANE W/ FLEX POSTS PROVIDE PROTECTED BIKE LANE SEPARATION, WITH GAPS AT DRIVEWAYS, FIRE HYDRANTS, AND FOR BIKES TO ENTER/EXIT BIKE LANES (TYP)

GREEN BIKE LANE MARKINGS THROUGH CONFLICT AREAS FOR ADDED VISIBILITY (TYP)



HIGUERA CORRIDOR COMPLETE STREETS

SIGNING AND STRIPING PLAN
 HIGUERA SREET - STA 5+03 TO STA 16+00

PROJECT TITLE
 SHEET TITLE



DESIGNED BY: #
 DRAWN BY: #
 CHECKED BY: #
 APPROVED BY: SF
 SCALE: 1"=20'
 DATE: January 28, 2019
 CITY SPECIFICATION NO.: 2019157
 PLAN FILE NO./LOCATION: 2021-206-T-SPM1_Higuera.dwg
 SHEET NO.: SPM-02

TURN BOX WITH PUSH BUTTON TO PROVIDE SIGNALIZED CROSSING OF HIGUERA FOR SOUTHBOUND LEFT-TURNING BICYCLISTS

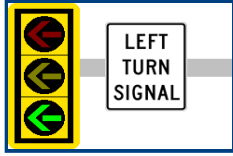
CONTINUOUS GREEN BIKE LANES BETWEEN SUBURBAN AND TANK FARM WHERE WIDTH IS INSUFFICIENT FOR BUFFERED/PROTECTED BIKE LANES

TRAFFIC SIGNAL MODIFICATIONS TO BE INSTALLED AT HIGUERA/SUBURBAN VIA SEPARATE PROJECT PRIOR TO COMPLETE STREETS CONSTRUCTION:
 - CONVERT SOUTHBOUND LEFT TURNS TO PROTECTED ONLY PHASING
 - INSTALL ILLUMINATED LED SIGN TO INCREASE VISIBILITY OF NORTHBOUND RIGHT-TURNING VEHICLES VS. BICYCLE CONFLICTS

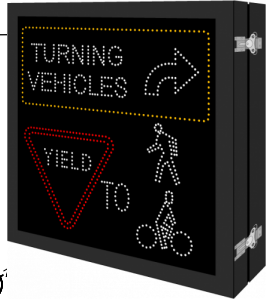
INSTALL RADAR SPEED FEEDBACK SIGN



INSTALL HI-VISIBILITY CROSSWALK MARKINGS (TYP)

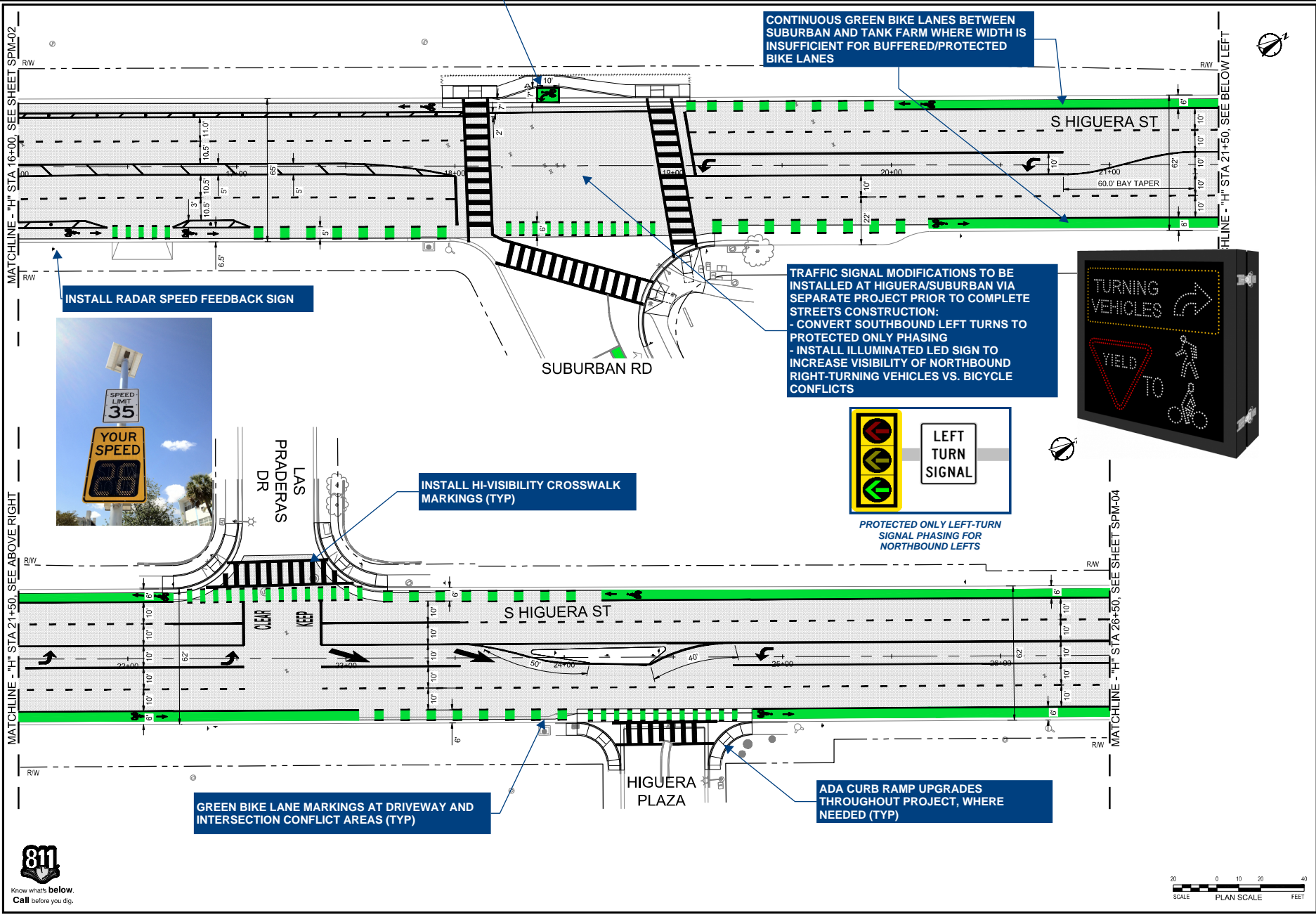



PROTECTED ONLY LEFT-TURN SIGNAL PHASING FOR NORTHBOUND LEFTS



GREEN BIKE LANE MARKINGS AT DRIVEWAY AND INTERSECTION CONFLICT AREAS (TYP)

ADA CURB RAMP UPGRADES THROUGHOUT PROJECT, WHERE NEEDED (TYP)






**HIGUERA CORRIDOR
COMPLETE STREETS**

SIGNING AND STRIPING PLAN
HIGUERA STREET - STA 16+00 TO STA 26+50

PROJECT TITLE: HIGUERA CORRIDOR COMPLETE STREETS

SHEET TITLE: SIGNING AND STRIPING PLAN
HIGUERA STREET - STA 16+00 TO STA 26+50



DESIGNED BY: #

DRAWN BY: #

CHECKED BY: #

APPROVED BY: SF

SCALE: 1"=20'

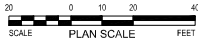
DATE: January 28, 2020

CITY SPECIFICATION NO.: 2001557

PLAN FILE NO./LOCATION: 2021-206-T-SPM1_Higuera.dwg

SHEETING: SPM-03

69 of 94





HIGUERA CORRIDOR
COMPLETE STREETS

SIGNING AND STRIPING PLAN

HIGUERA STREET - STA 26+50 TO STA 37+00

PROJECT TITLE:

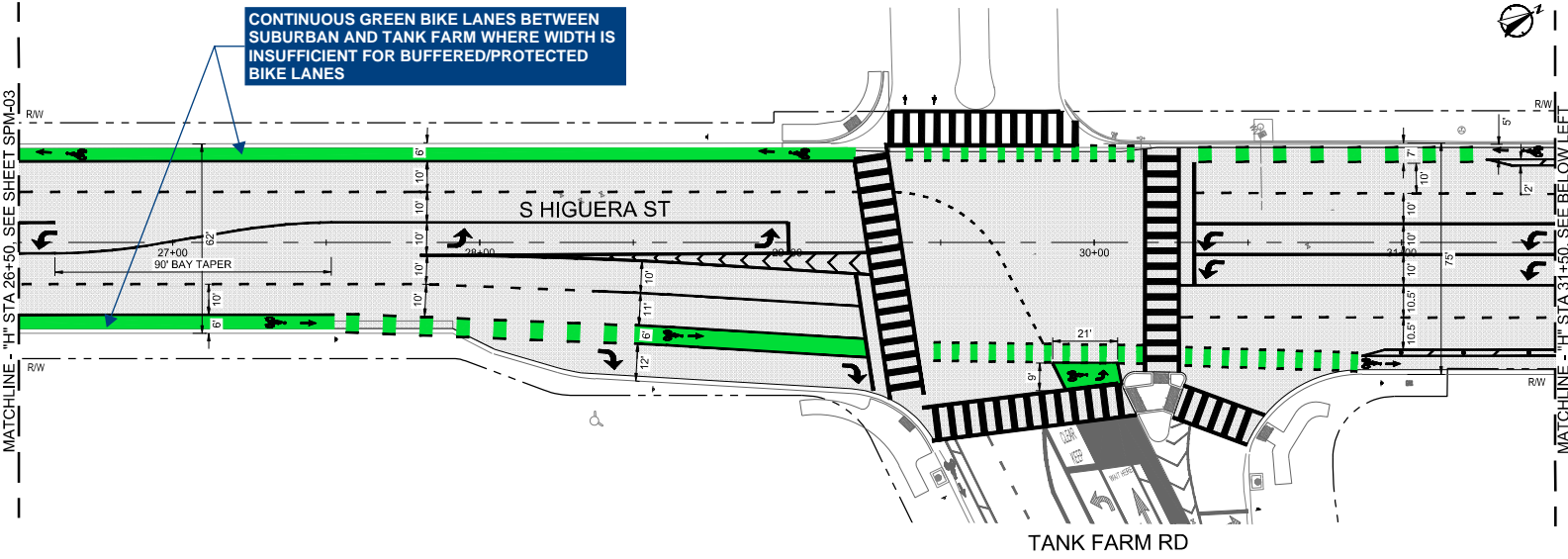
SHEET TITLE:



DESIGNED BY: #
DRAWN BY: #
CHECKED BY: #
APPROVED BY: SF
SCALE: 1"=20'
DATE: January 28
CITY SPECIFICATION NO.: 2001057
PLAN FILE NO./LOCATION: 2021-006-T-SPM1_Higuera.dwg
SHEETING:

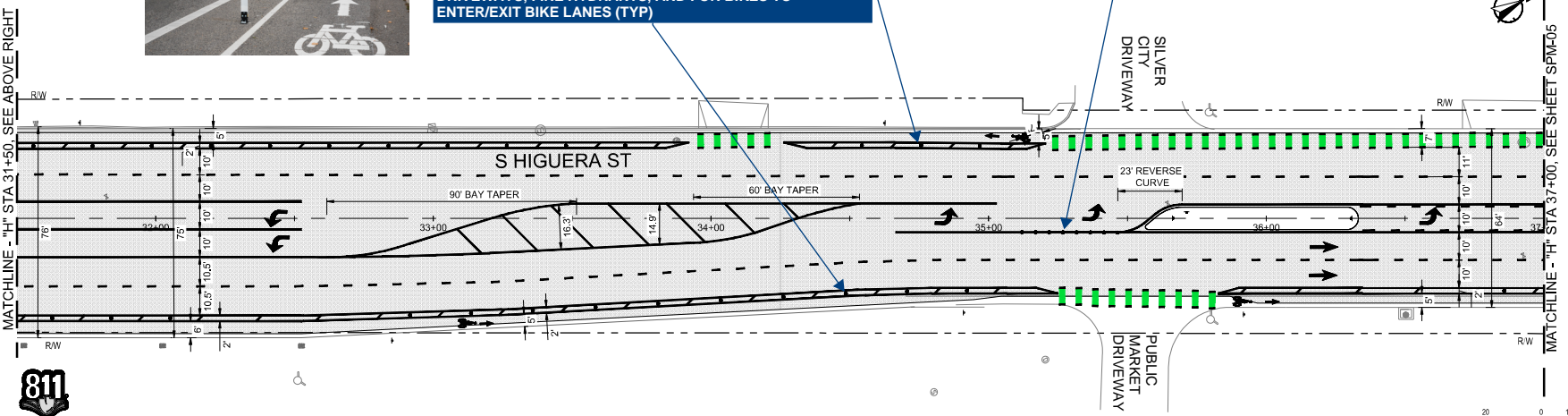
SPM-04
70 of 94

CONTINUOUS GREEN BIKE LANES BETWEEN SUBURBAN AND TANK FARM WHERE WIDTH IS INSUFFICIENT FOR BUFFERED/PROTECTED BIKE LANES



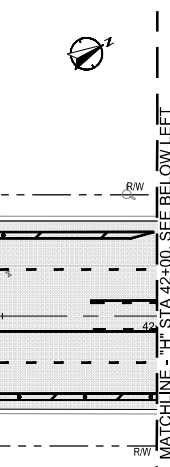
BUFFERED BIKE LANE W/ FLEX POSTS PROVIDE PROTECTED BIKE LANE SEPARATION, WITH GAPS AT DRIVEWAYS, FIRE HYDRANTS, AND FOR BIKES TO ENTER/EXIT BIKE LANES (TYP)

ADD FLEX POSTS AND "NO LEFT TURN" SIGNAGE TO DISCOURAGE ILLEGAL TURNS AROUND MEDIAN NEAR SILVER CITY AND THE SLO PUBLIC MARKET



MATCHLINE - "H" STA 37+00, SEE SHEET SPM-04

MATCHLINE - "H" STA 42+00, SEE ABOVE RIGHT



BUFFERED BIKE LANE W/ FLEX POSTS PROVIDE PROTECTED BIKE LANE SEPARATION, WITH GAPS AT DRIVEWAYS, FIRE HYDRANTS, AND FOR BIKES TO ENTER/EXIT BIKE LANES (TYP)

PATCH POT HOLES AND RESURFACE ROADWAY PAVEMENT THROUGHOUT PROJECT (TYP)

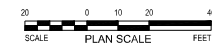
GAPS IN BIKEWAY SEPARATION PROVIDED TO ALLOW CYCLISTS TO MERGE INTO TRAFFIC LANES FOR LEFT-TURNS AT DOWNSTREAM INTERSECTIONS AND DRIVEWAYS (TYP)



MATCHLINE - "H" STA 46+50, SEE SHEET SPM-06



Know what's below.
Call before you dig.



HIGUERA CORRIDOR
COMPLETE STREETS

SIGNING AND STRIPING PLAN

HIGUERA STREET - STA 37+00 TO STA 46+50

PROJECT TITLE

SHEET TITLE



DESIGNED BY: #
 DRAWN BY: #
 CHECKED BY: #
 APPROVED BY: SP
 SCALE: 1"=20'
 DATE: January 28
 CITY SPECIFICATION NO.: 2001557
 PLAN FILE NO./LOCATION: 2021-206-T-SPM_Higuera.dwg
 SHEETING: SPM-05

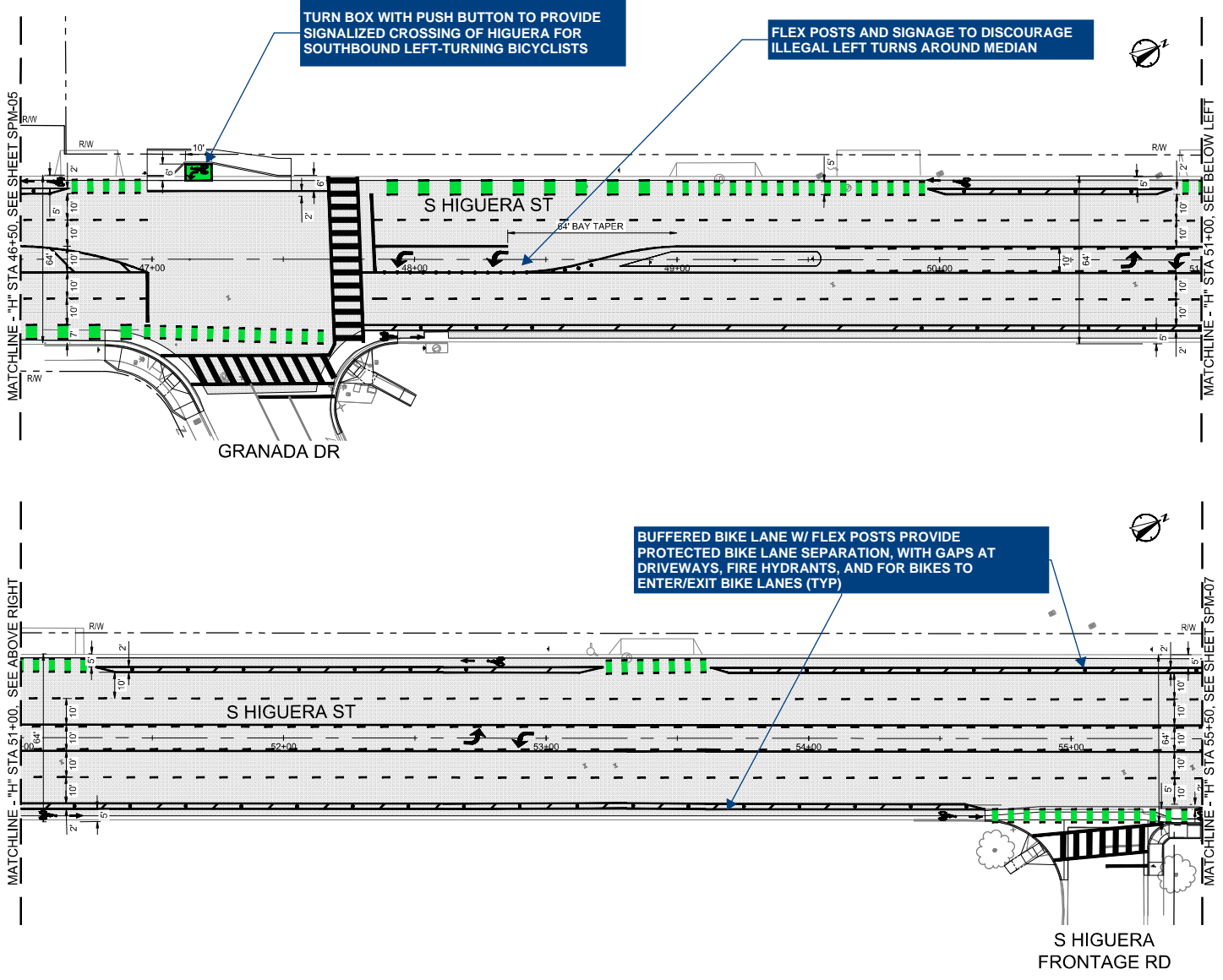


**HIGUERA CORRIDOR
COMPLETE STREETS**
SIGNING AND STRIPING PLAN
HIGUERA STREET - STA 46+50 TO STA 55+50

PROJECT TITLE:
SHEET TITLE:



DESIGNED BY: #
DRAWN BY: #
CHECKED BY: #
APPROVED BY: SF
SCALE: 1"=20'
DATE: January 28, 2020
CITY SPECIFICATION NO.: 2001657
PLAN FILE NO./LOCATION: 2021-206-T-SPM_Higuera.dwg
SHEETING: SPM-06



TURN BOX WITH PUSH BUTTON TO PROVIDE SIGNALIZED CROSSING OF HIGUERA FOR SOUTHBOUND LEFT-TURNING BICYCLISTS

FLEX POSTS AND SIGNAGE TO DISCOURAGE ILLEGAL LEFT TURNS AROUND MEDIAN

BUFFERED BIKE LANE W/ FLEX POSTS PROVIDE PROTECTED BIKE LANE SEPARATION, WITH GAPS AT DRIVEWAYS, FIRE HYDRANTS, AND FOR BIKES TO ENTER/EXIT BIKE LANES (TYP)





HIGUERA CORRIDOR
COMPLETE STREETS

SIGNING AND STRIPING PLAN

HIGUERA STREET - STA 55+50 TO STA 65+00

PROJECT TITLE:

SHEET TITLE:



DESIGNED BY:

#

DRAWN BY:

#

CHECKED BY:

#

APPROVED BY:

SF

SCALE:

1"=20'

DATE:

January 28

CITY SPECIFICATION NO.:

2001557

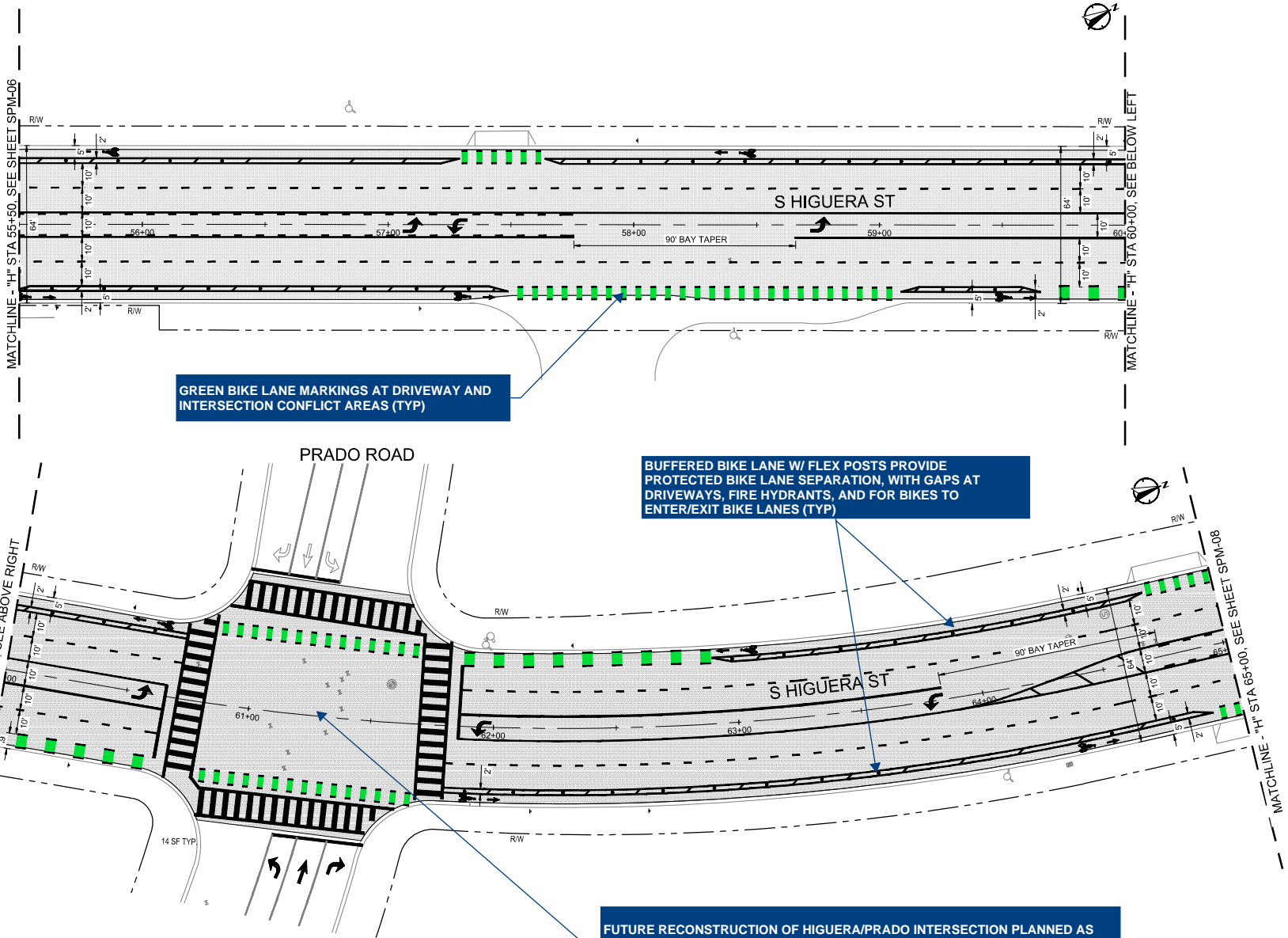
PLAN FILE NO./LOCATION:

2021-06-T-SPM1_Higuera.dwg

SHEETING:

SPM-07

73 of 94



GREEN BIKE LANE MARKINGS AT DRIVEWAY AND INTERSECTION CONFLICT AREAS (TYP)

BUFFERED BIKE LANE W/ FLEX POSTS PROVIDE PROTECTED BIKE LANE SEPARATION, WITH GAPS AT DRIVEWAYS, FIRE HYDRANTS, AND FOR BIKES TO ENTER/EXIT BIKE LANES (TYP)

FUTURE RECONSTRUCTION OF HIGUERA/PRADO INTERSECTION PLANNED AS PART OF PRADO CREEK BRIDGE REPLACEMENT PROJECT. INTERIM IMPROVEMENTS INCLUDE HI-VISIBILITY CROSSWALKS AND GREEN BIKE LANE CONFLICT MARKINGS





HIGUERA CORRIDOR
COMPLETE STREETS

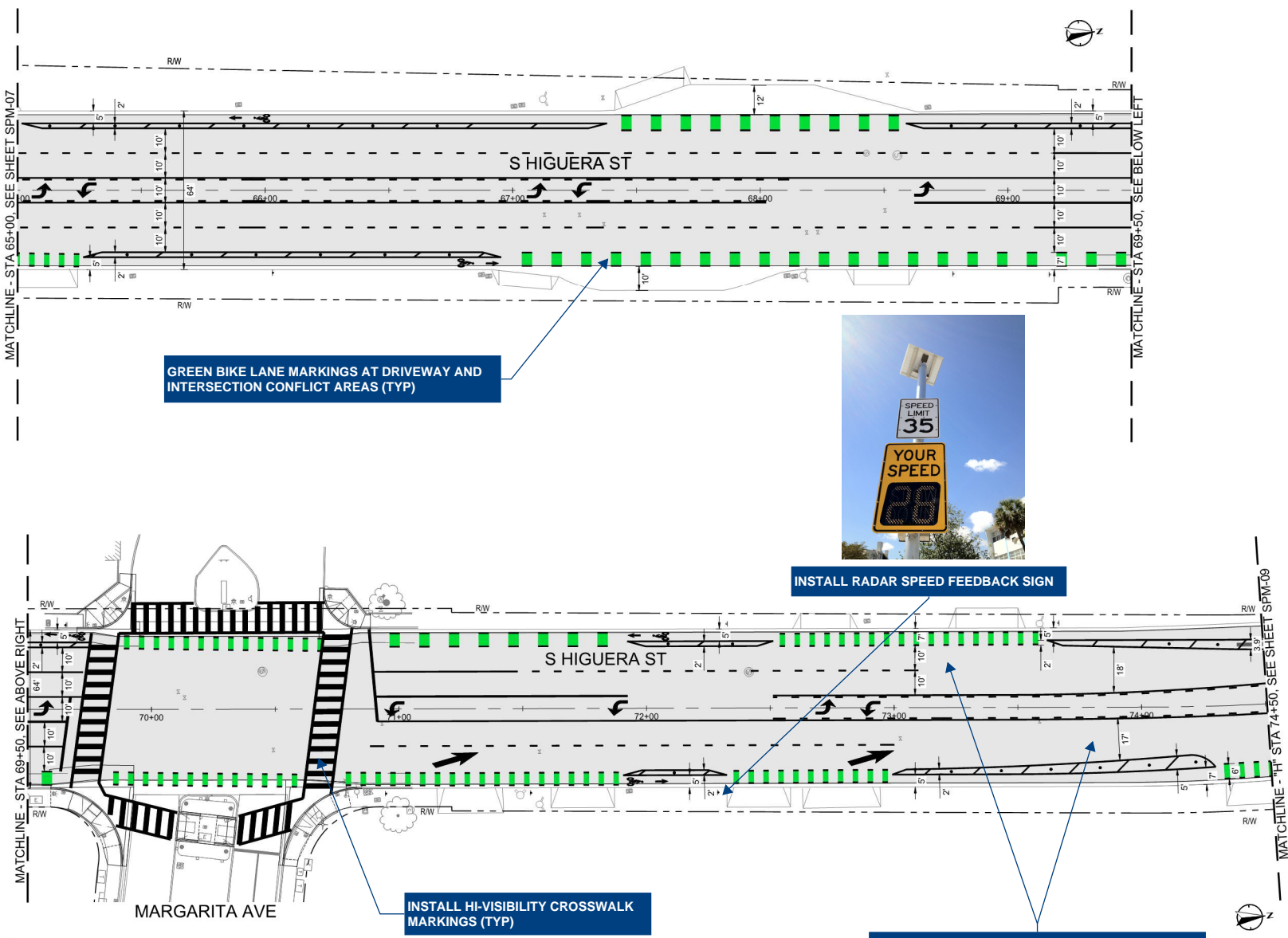
SIGNING AND STRIPING PLAN
HIGUERA STREET - STA 65+00 TO STA 74+50

PROJECT TITLE:

SHEET TITLE:



DESIGNED BY:	##
DRAWN BY:	##
CHECKED BY:	##
APPROVED BY:	##
SCALE:	1"=20'
DATE:	January 26, 2021
CITY SPECIFICATION NO.:	2021167
PLAN FILE NO. / LOCATION:	2021-206-T-SPM_Higuera.dwg
SHEET NO.:	SPM-08



GREEN BIKE LANE MARKINGS AT DRIVEWAY AND INTERSECTION CONFLICT AREAS (TYP)

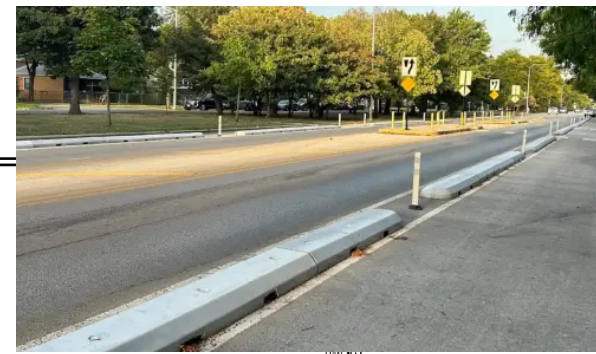


INSTALL RADAR SPEED FEEDBACK SIGN

INSTALL HI-VISIBILITY CROSSWALK MARKINGS (TYP)

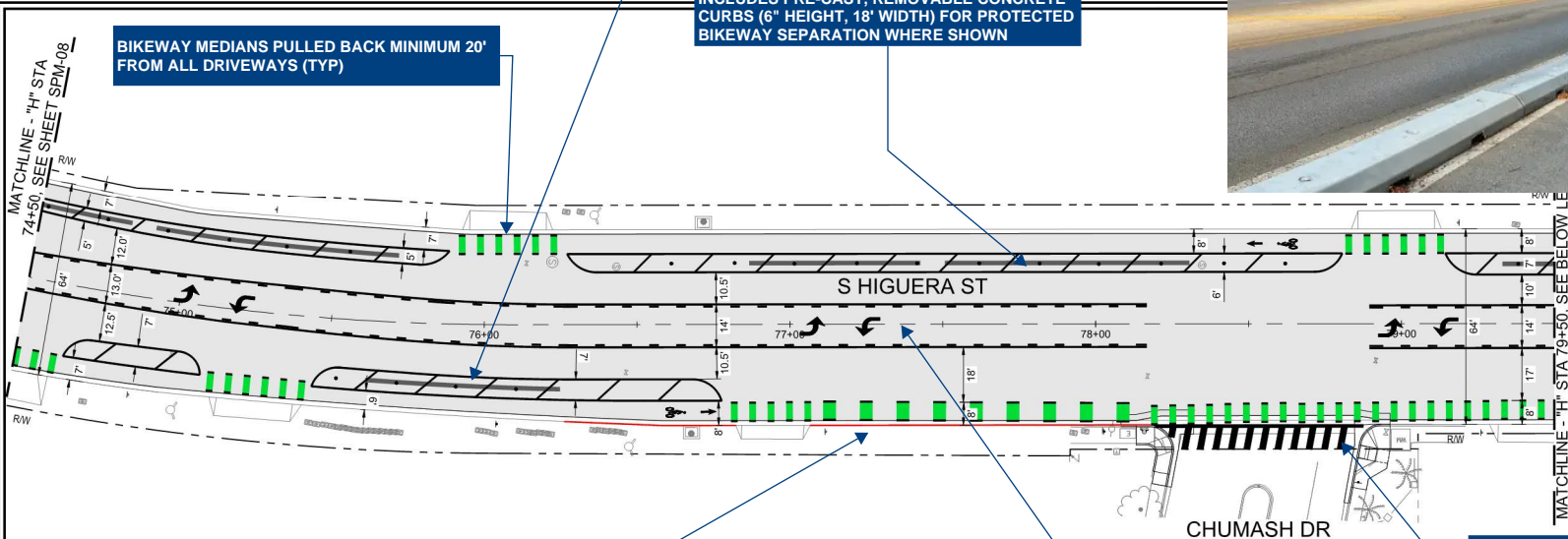
HIGUERA ST. RECONFIGURED TO THREE LANES (ONE LANE EACH DIRECTION + CENTER TURN LANE) BETWEEN MARGARITA AND BRIDGE ST.





BETWEEN MARGARITA AND BRIDGE STREET, BASE BID INCLUDES FLEX POSTS ONLY FOR BIKEWAY SEPARATION. BID ADDITIVE INCLUDES PRE-CAST, REMOVABLE CONCRETE CURBS (6" HEIGHT, 18' WIDTH) FOR PROTECTED BIKEWAY SEPARATION WHERE SHOWN

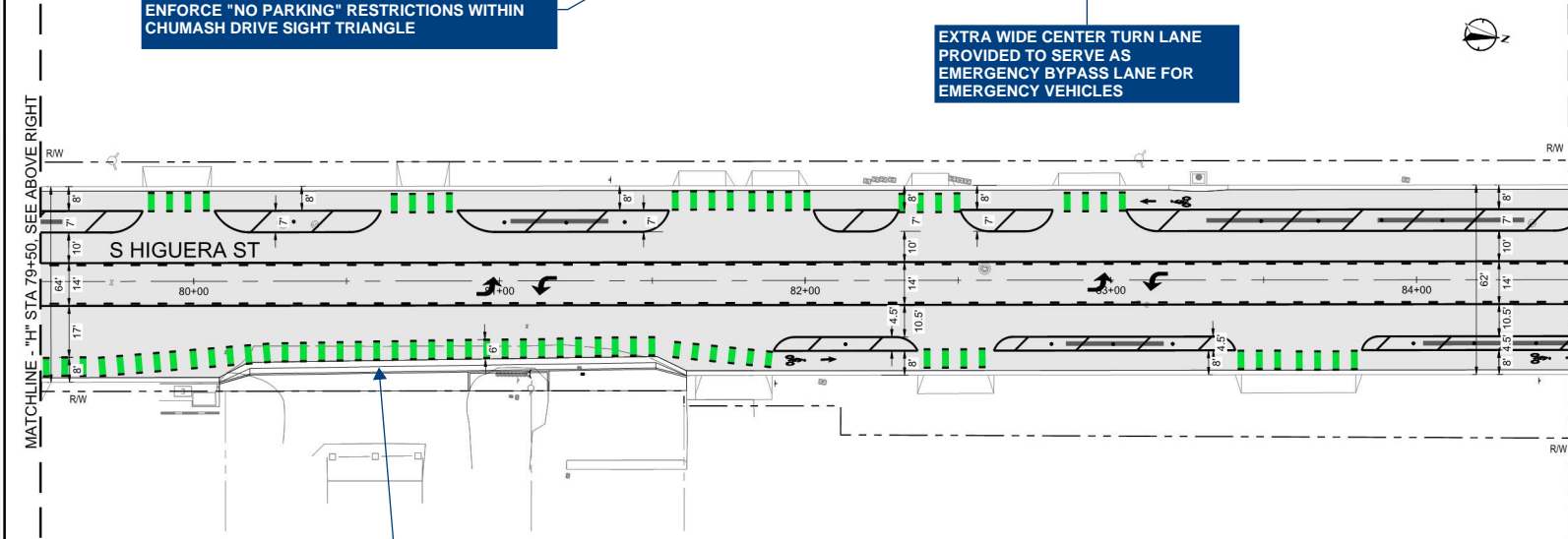
BIKEWAY MEDIANS PULLED BACK MINIMUM 20' FROM ALL DRIVEWAYS (TYP)



REFRESH RED CURB PAINT AND SIGNAGE TO ENFORCE "NO PARKING" RESTRICTIONS WITHIN CHUMASH DRIVE SIGHT TRIANGLE

EXTRA WIDE CENTER TURN LANE PROVIDED TO SERVE AS EMERGENCY BYPASS LANE FOR EMERGENCY VEHICLES

INSTALL HI-VISIBILITY CROSSWALK MARKINGS (TYP)



WIDEN PAVEMENT AND CONSTRUCT TEMPORARY DRAINAGE GUTTER -- REMAINING WIDENING AND SIDEWALK GAP CLOSURE IN FUTURE (PENDING RIGHT-OF-WAY ACQUISITION)



**HIGUERA CORRIDOR
COMPLETE STREETS**
SIGNING AND STRIPING PLAN
HIGUERA STREET - STA 74+50 TO STA 84+50

PROJECT TITLE:
SHEET TITLE:



DESIGNED BY: #
DRAWN BY: #
CHECKED BY: #
APPROVED BY: SF
SCALE: 1"=20'
DATE: January 26
CITY SPECIFICATION NO.: 201167
PLAN FILE NO.: LOCATION: 2021-206-T-SPM_Higuera.dwg
SHEET NO.: SPM-09



HIGUERA CORRIDOR
COMPLETE STREETS

SIGNING AND STRIPING PLAN

HIGUERA STREET - STA 84+50 TO STA 94+00

PROJECT TITLE:

SHEET TITLE:



DESIGNED BY:

DRAWN BY:

CHECKED BY:

APPROVED BY:

SCALE:

DATE:

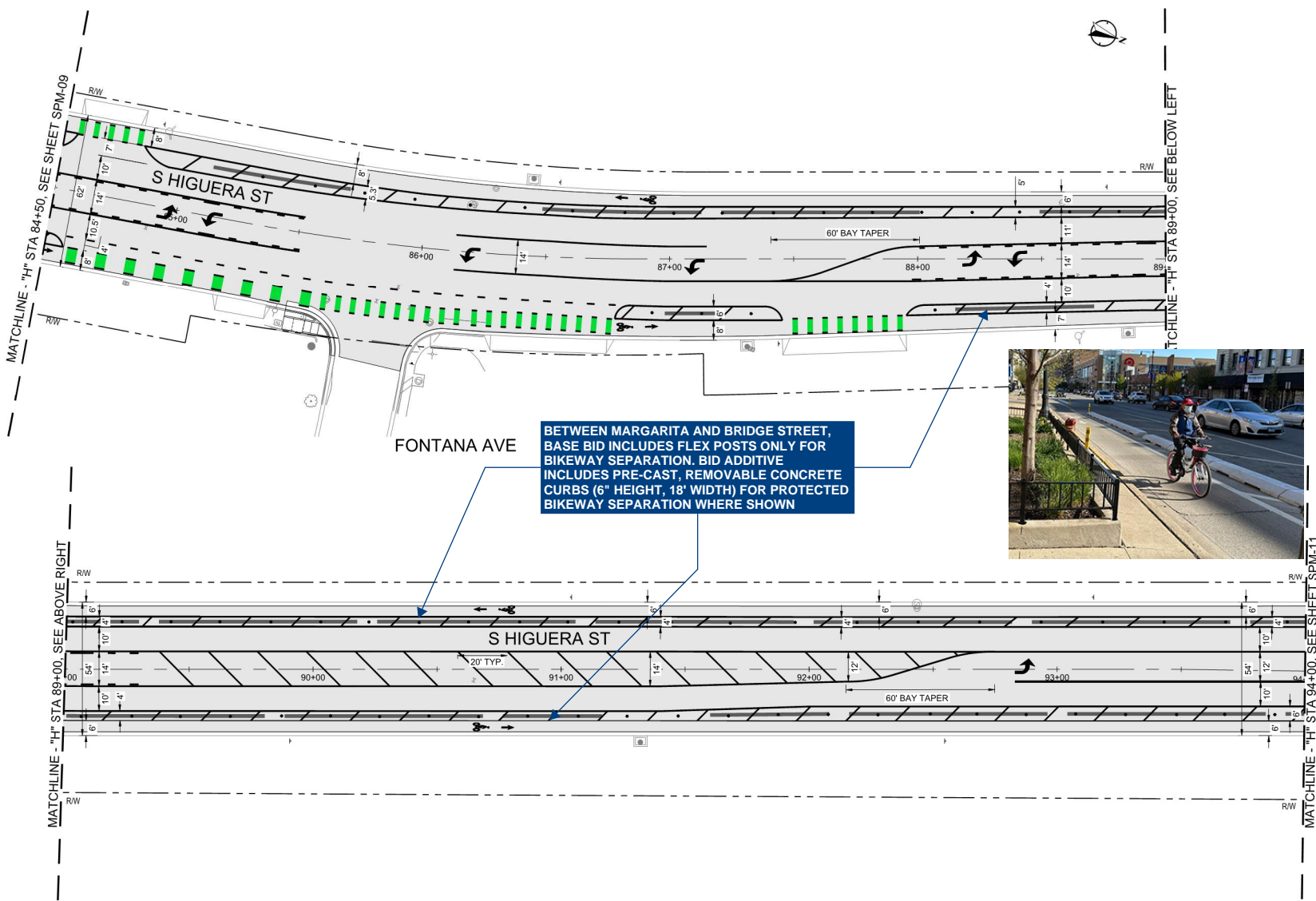
CITY SPECIFICATION NO.:

PLAN FILE NO. / LOCATION:

SHEET NO.:

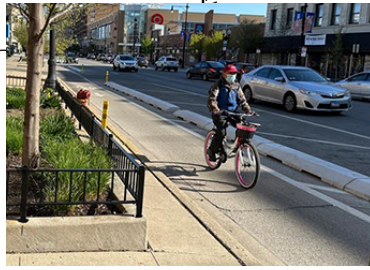
SPM-10

76 of 94



FONTANA AVE

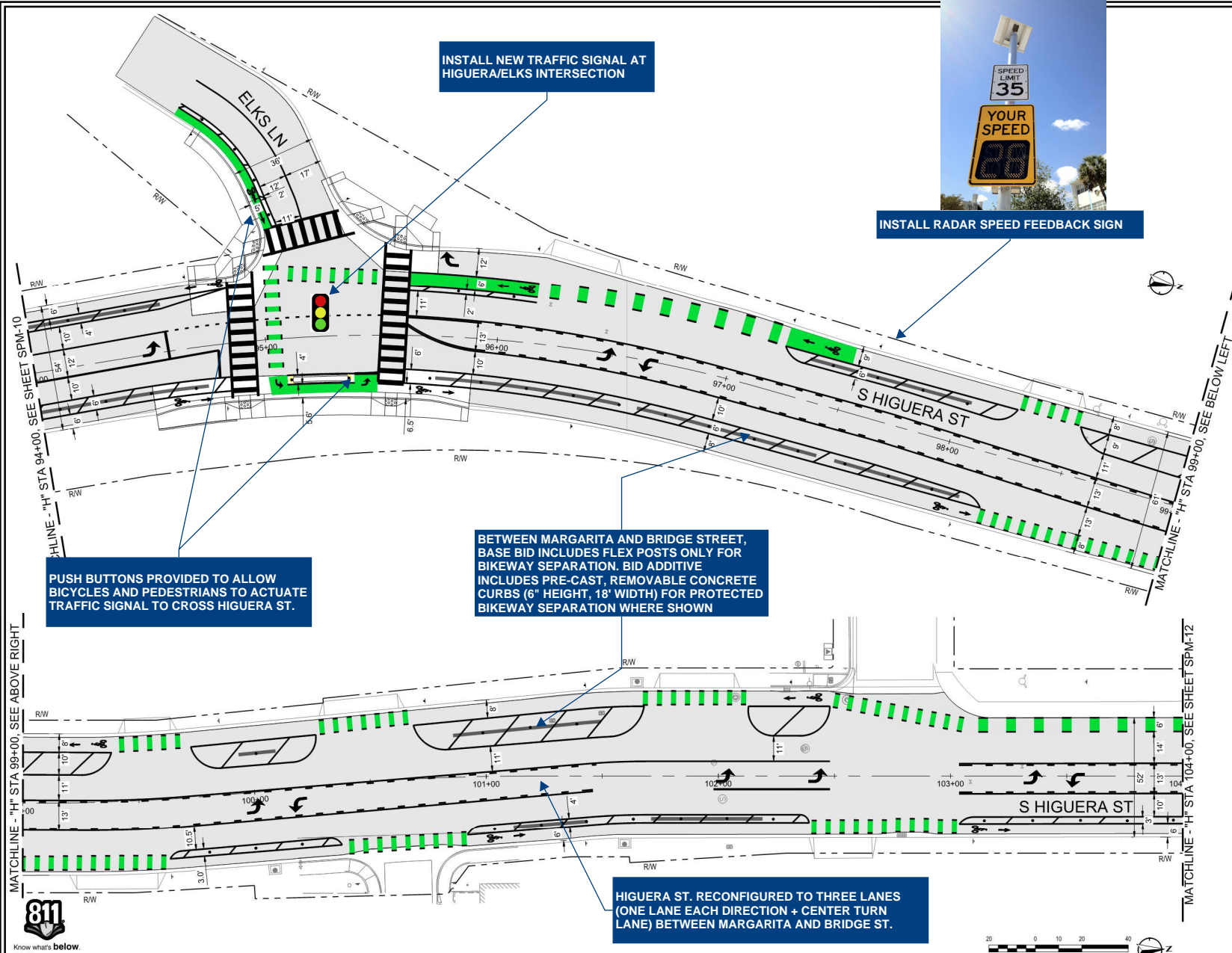
BETWEEN MARGARITA AND BRIDGE STREET,
BASE BID INCLUDES FLEX POSTS ONLY FOR
BIKEWAY SEPARATION. BID ADDITIVE
INCLUDES PRE-CAST, REMOVABLE CONCRETE
CURBS (6" HEIGHT, 18' WIDTH) FOR PROTECTED
BIKEWAY SEPARATION WHERE SHOWN



Know what's below.
Call before you dig.



SCALE PLAN SCALE FEET



INSTALL NEW TRAFFIC SIGNAL AT HIGUERA/ELKS INTERSECTION

INSTALL RADAR SPEED FEEDBACK SIGN



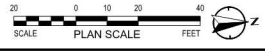
PUSH BUTTONS PROVIDED TO ALLOW BICYCLES AND PEDESTRIANS TO ACTUATE TRAFFIC SIGNAL TO CROSS HIGUERA ST.

BETWEEN MARGARITA AND BRIDGE STREET, BASE BID INCLUDES FLEX POSTS ONLY FOR BIKEWAY SEPARATION. BID ADDITIVE INCLUDES PRE-CAST, REMOVABLE CONCRETE CURBS (6" HEIGHT, 18" WIDTH) FOR PROTECTED BIKEWAY SEPARATION WHERE SHOWN

HIGUERA ST. RECONFIGURED TO THREE LANES (ONE LANE EACH DIRECTION + CENTER TURN LANE) BETWEEN MARGARITA AND BRIDGE ST.

MATCHLINE - "H" STA 99+00, SEE ABOVE RIGHT

MATCHLINE - "H" STA 104+00, SEE SHEET SPM-12

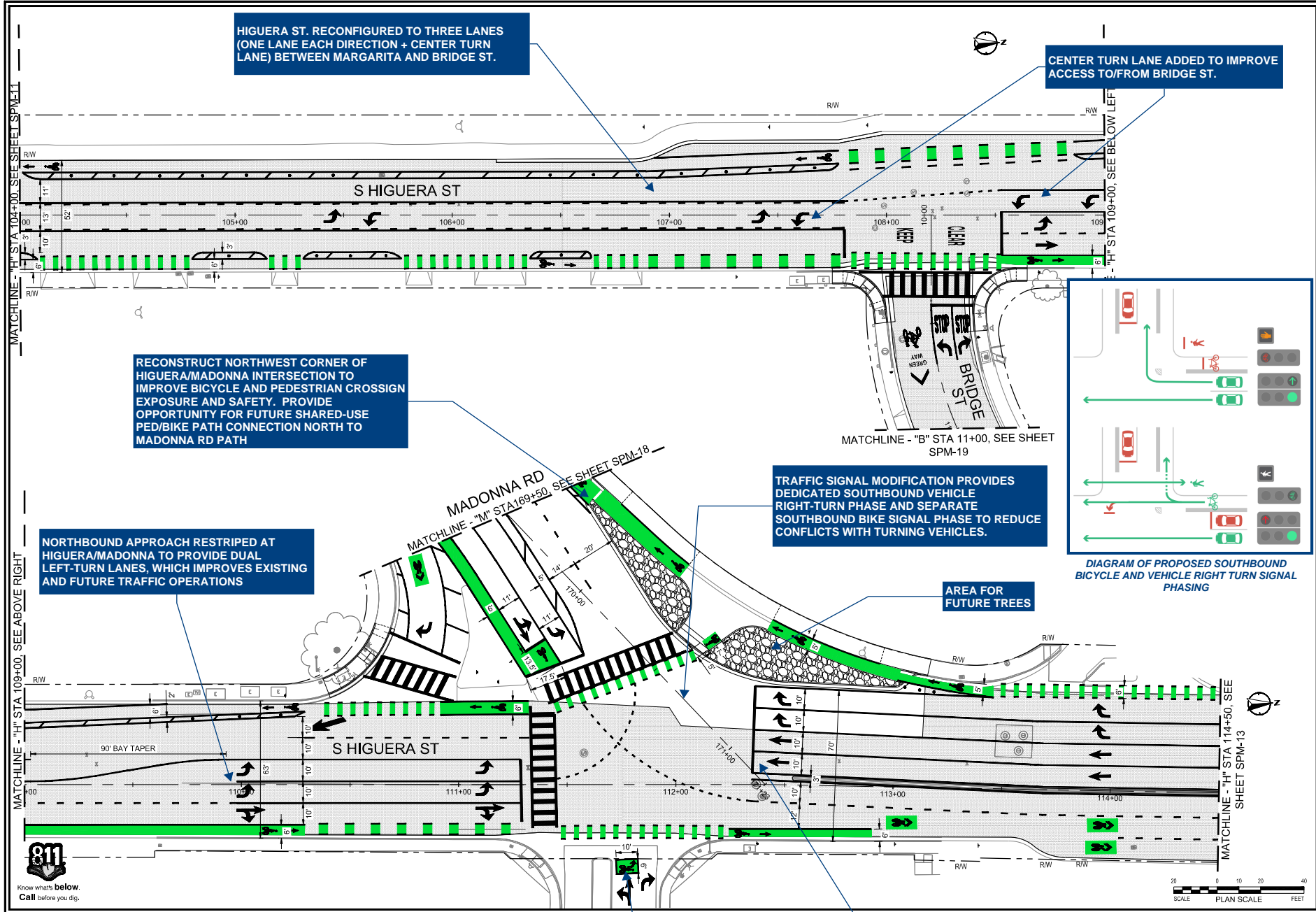


HIGUERA CORRIDOR
COMPLETE STREETS
SIGNING AND STRIPING PLAN
HIGUERA STREET - STA 94+00 TO STA 104+00

PROJECT TITLE:
SHEET TITLE:



DESIGNED BY: #
DRAWN BY: #
CHECKED BY: #
APPROVED BY: SF
SCALE: 1"=20'
DATE: January 26
CITY SPECIFICATION NO.: 2021057
PLAN FILE NO.: LOCATION: 2021-206-T-SPM_Higuera.dwg
SHEET NO.:



HIGUERA ST. RECONFIGURED TO THREE LANES (ONE LANE EACH DIRECTION + CENTER TURN LANE) BETWEEN MARGARITA AND BRIDGE ST.

CENTER TURN LANE ADDED TO IMPROVE ACCESS TO/FROM BRIDGE ST.

RECONSTRUCT NORTHWEST CORNER OF HIGUERA/MADONNA INTERSECTION TO IMPROVE BICYCLE AND PEDESTRIAN CROSSING EXPOSURE AND SAFETY. PROVIDE OPPORTUNITY FOR FUTURE SHARED-USE PED/BIKE PATH CONNECTION NORTH TO MADONNA RD PATH

TRAFFIC SIGNAL MODIFICATION PROVIDES DEDICATED SOUTHBOUND VEHICLE RIGHT-TURN PHASE AND SEPARATE SOUTHBOUND BIKE SIGNAL PHASE TO REDUCE CONFLICTS WITH TURNING VEHICLES.

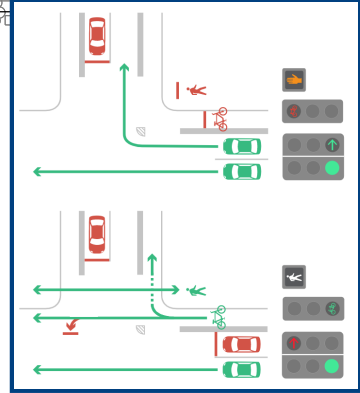


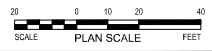
DIAGRAM OF PROPOSED SOUTHBOUND BICYCLE AND VEHICLE RIGHT TURN SIGNAL PHASING

NORTHBOUND APPROACH RESTRIPE AT HIGUERA/MADONNA TO PROVIDE DUAL LEFT-TURN LANES, WHICH IMPROVES EXISTING AND FUTURE TRAFFIC OPERATIONS

AREA FOR FUTURE TREES

TWO-STAGE BICYCLE LEFT TURN BOX FACILITATES NORTHBOUND LEFT-TURN MOVEMENTS FOR BICYCLISTS TOWARDS WESTBOUND MADONNA RD

SOUTHBOUND LEFT-TURNS RESTRICTED, RE-DIRECTED TO BRIDGE ST

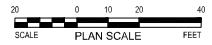
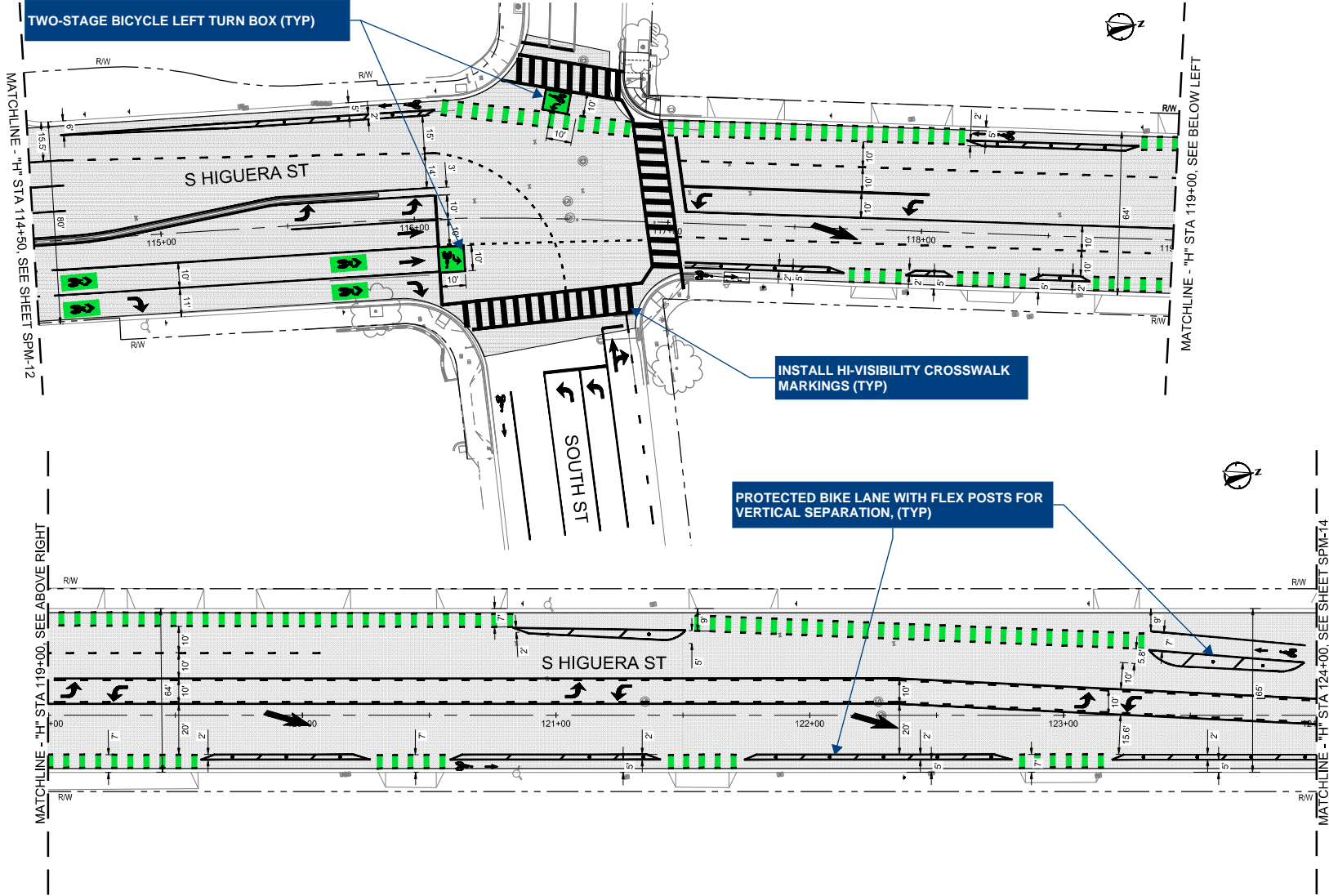


HIGUERA CORRIDOR COMPLETE STREETS
SIGNING AND STRIPING PLAN
HIGUERA STREET - STA 104+00 TO STA 114+50

PROJECT TITLE:
SHEET TITLE:



DESIGNED BY: #
DRAWN BY: #
CHECKED BY: #
APPROVED BY: SF
SCALE: 1"=20'
DATE: January 28, 2020
CITY SPECIFICATION NO.: 20201657
PLAN FILE NO./LOCATION: 2021-206-T-SPM1_Higuera.dwg
SHEETING: SPM-12

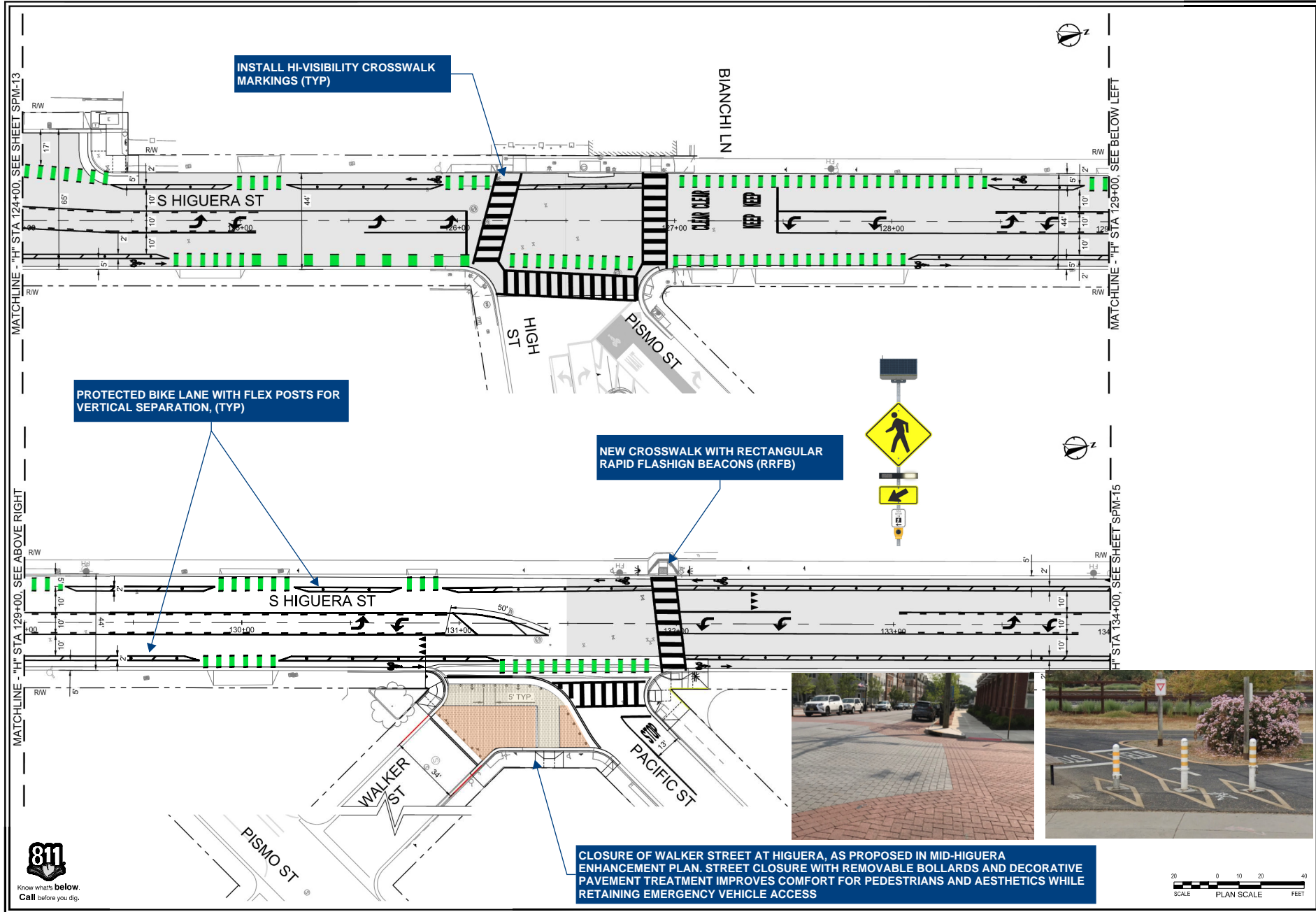


**HIGUERA CORRIDOR
COMPLETE STREETS**
SIGNING AND STRIPING PLAN
HIGUERA STREET - STA 114+50 TO STA 124+00

PROJECT TITLE:
SHEET TITLE:



DESIGNED BY: #
DRAWN BY: #
CHECKED BY: #
APPROVED BY: SF
SCALE: 1"=20'
DATE: January 28, 2021
CITY SPECIFICATION NO.: 2021057
PLAN FILE NO./LOCATION: 2021-206-T-SPM_Higuera.dwg
SHEETING: SPM-13



PROJECT TITLE
**HIGUERA CORRIDOR
 COMPLETE STREETS**
 SHEET TITLE
**SIGNING AND STRIPING PLAN
 HIGUERA STREET - STA 124+00 TO STA 134+00**



DESIGNED BY:	#
DRAWN BY:	#
CHECKED BY:	#
APPROVED BY:	SF
SCALE:	1"=20'
DATE:	January 28, 2021
CITY SPECIFICATION NO.:	2021057
PLAN FILE NO./LOCATION:	2021-206-T-SPM1_Higuera.dwg
SHEETING:	SPM-14
80 of 94	



PROJECT TITLE:
**HIGUERA CORRIDOR
 COMPLETE STREETS**

SHEET TITLE:
**SIGNING AND STRIPING PLAN
 HIGUERA STREET - STA 134+00 TO STA 135+50**



DESIGNED BY:
 #

DRAWN BY:
 #

CHECKED BY:
 #

APPROVED BY:
 SF

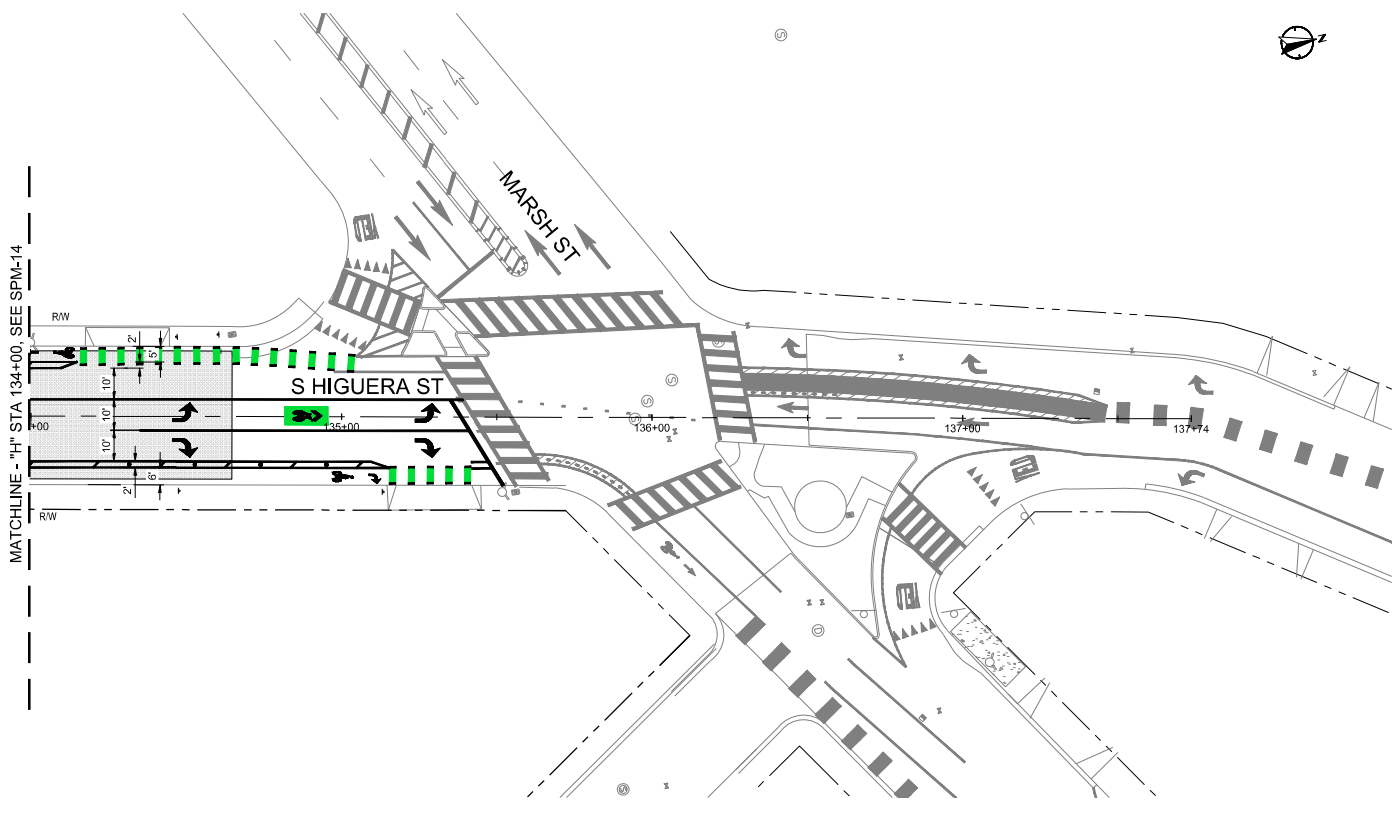
SCALE:
 1"=20'

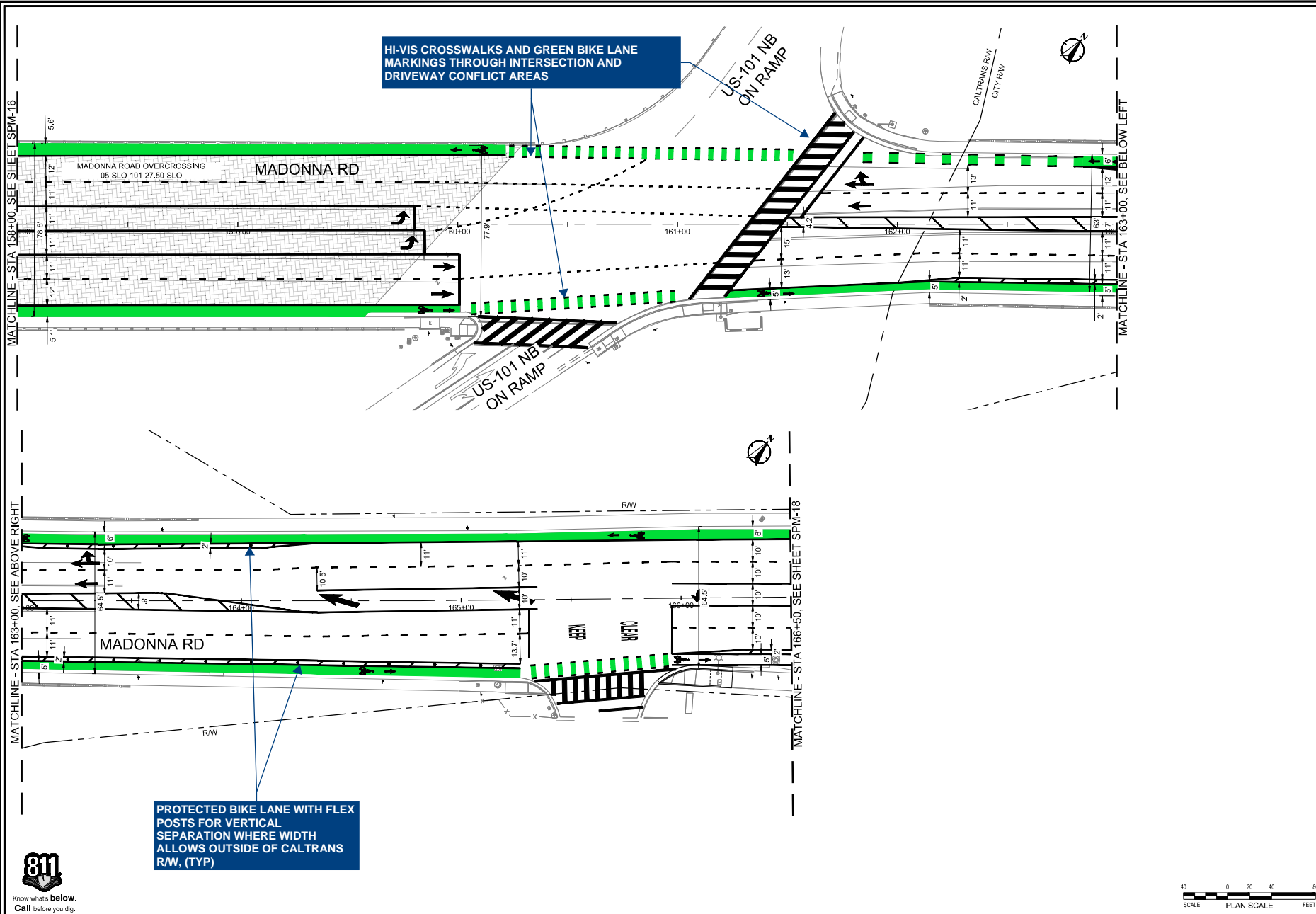
DATE:
 January 28

CITY SPECIFICATION NO.
 2001657

PLAN FILE NO./LOCATION
 2021-206-T-SPM1_Higuera.dwg

SHEETING:
 SPM-15





MATCHLINE - STA 158+00, SEE SHEET SPM-16

MATCHLINE - STA 163+00, SEE ABOVE RIGHT

MATCHLINE - STA 163+00, SEE BELOW LEFT

MATCHLINE - STA 166+50, SEE SHEET SPM-18



PROTECTED BIKE LANE WITH FLEX POSTS FOR VERTICAL SEPARATION WHERE WIDTH ALLOWS OUTSIDE OF CALTRANS R/W, (TYP)

HI-VIS CROSSWALKS AND GREEN BIKE LANE MARKINGS THROUGH INTERSECTION AND DRIVEWAY CONFLICT AREAS

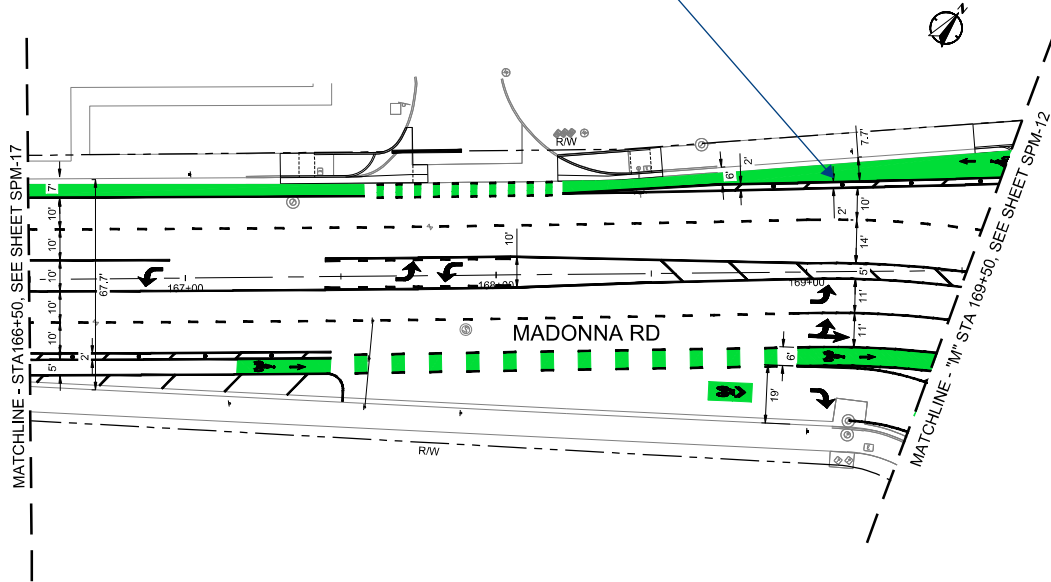


PROJECT TITLE
**HIGUERA CORRIDOR
 COMPLETE STREETS**
 SHEET TITLE
**SIGNING AND STRIPING PLAN
 MADONNA ROAD - STA 158+00 TO STA 166+50**



DESIGNED BY: #
 DRAWN BY: #
 CHECKED BY: #
 APPROVED BY: SF
 SCALE: 1"=20'
 DATE: January 28
 CITY SPECIFICATION NO.: 2001557
 PLAN FILE NO./LOCATION: 2021-206-T-SPM_Higuera.dwg
 SHEETING: SPM-17

PROTECTED BIKE LANE WITH FLEX
POSTS FOR VERTICAL
SEPARATION WHERE WIDTH
ALLOWS OUTSIDE OF CALTRANS
R/W, (TYP)



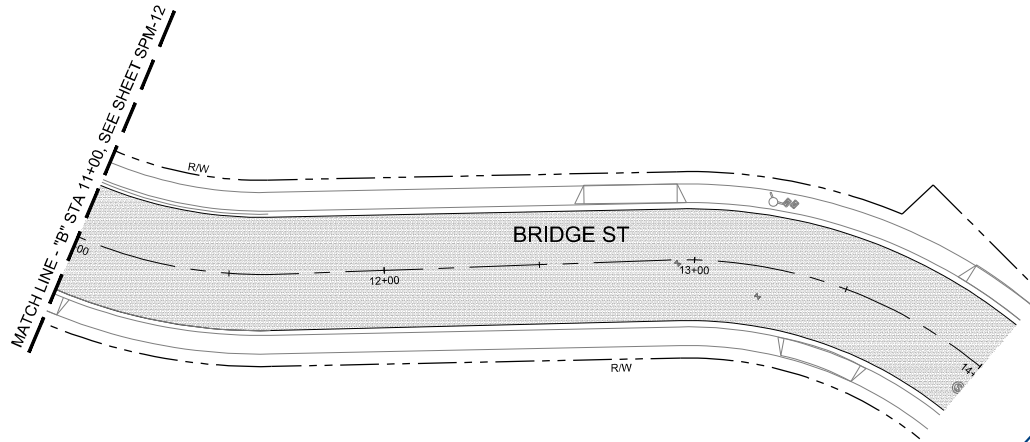
PROJECT TITLE
**HIGUERA CORRIDOR
 COMPLETE STREETS**

SHEET TITLE
**SIGNING AND STRIPING PLAN
 MADONNA ROAD - STA 166+50 TO STA 169+50**

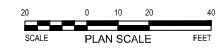
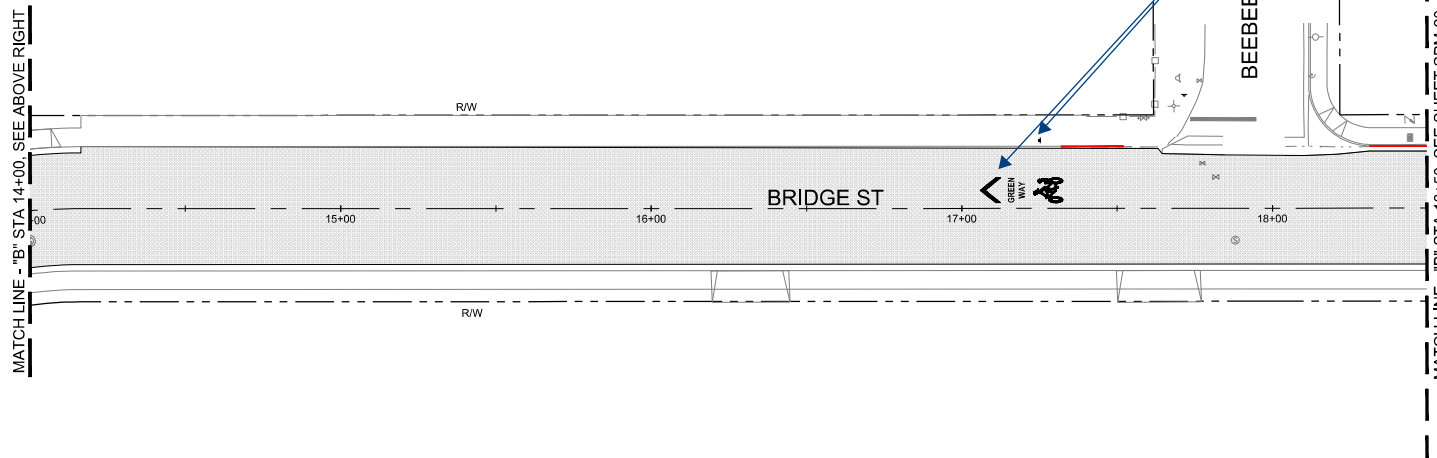


DESIGNED BY: #
 DRAWN BY: #
 CHECKED BY: #
 APPROVED BY: SF
 SCALE: 1"=20'
 DATE: January 28
 CITY SPECIFICATION NO.: 2001657
 PLAN FILE NO./LOCATION: 2021-206-T-SPM_Higuera.dwg
 SHEETING: SPM-18





NEIGHBORHOOD GREENWAY MARKINGS AND GUIDE SIGNAGE ALONG THE MEADOW PARK GREENWAY FOLLOWING BRIDGE ST, EXPOSITION, CORRIDA, AND WOODBRIDGE STREETS



PROJECT TITLE:
**HIGUERA CORRIDOR
 COMPLETE STREETS**

SHEET TITLE:
**SIGNING AND STRIPING PLAN
 BRIDGE STREET - STA 10+50 TO STA 18+50**



DESIGNED BY:
 VH

DRAWN BY:
 JP

CHECKED BY:
 JG

APPROVED BY:
 SF

SCALE:
 1"=20'

DATE:
 January 25

CITY SPECIFICATION NO.:
 2001557

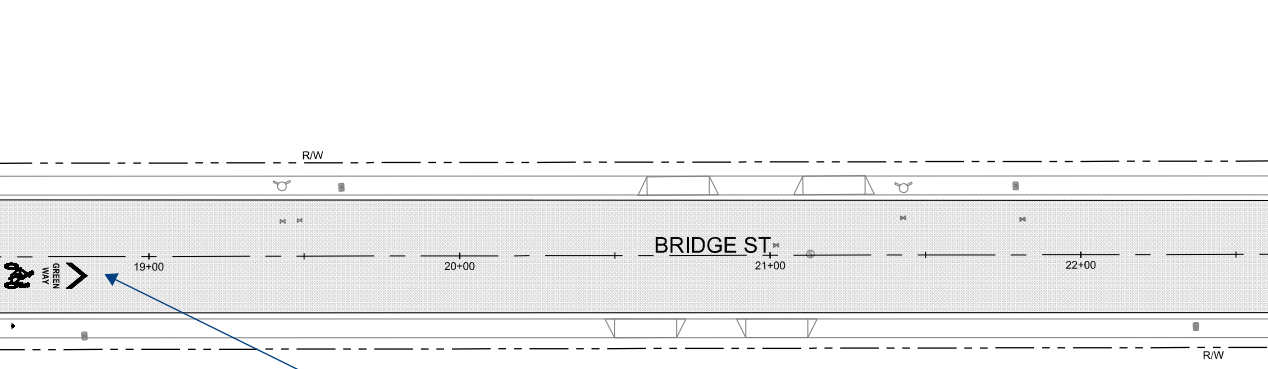
PLAN FILE NO./LOCATION:
 2021-206-T-SPM_Greenway.dwg

SHEETING:
 SPM-19

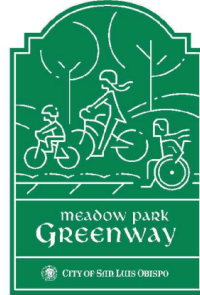


MATCH LINE - "B" STA 18+50, SEE SHEET L-09

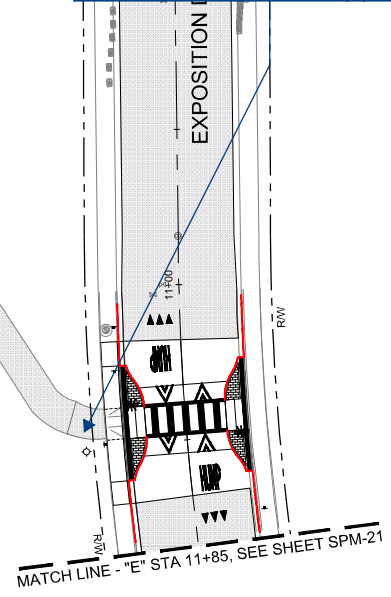
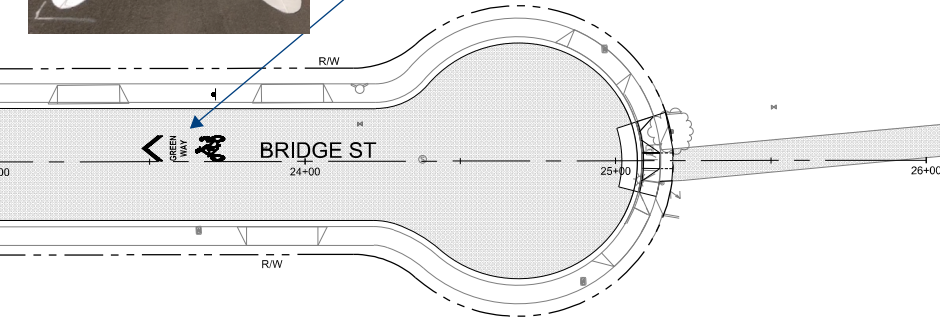
MATCH LINE - "B" STA 23+00, SEE ABOVE RIGHT



NEIGHBORHOOD GREENWAY MARKINGS AND GUIDE SIGNAGE ALONG THE MEADOW PARK GREENWAY FOLLOWING BRIDGE ST, EXPOSITION, CORRIDA, AND WOODBRIDGE STREETS



RAISED CROSSWALK WITH NEW LIGHTING TO IMPROVE CONNECTIVITY BETWEEN MEADOW PARK, HIGUERA STREET AND OTHER BIKE/PED CONNECTIONS SOUTH OF DOWNTOWN



HIGUERA CORRIDOR
COMPLETE STREETS

SIGNING AND STRIPING PLAN
BRIDGE STREET - STA 18+50 TO STA 23+50
EXPOSITION DRIVE - STA 10+00 TO STA 11+85

PROJECT TITLE

SHEET TITLE



DESIGNED BY: VH
DRAWN BY: JP
CHECKED BY: JG
APPROVED BY: SF
SCALE: 1"=20'
DATE: January 25
CITY SPECIFICATION NO.: 2001657
PLAN FILE NO./LOCATION: 2021-206-T-SPM_Greenway.dwg
SHEETING: SPM-20





HIGUERA CORRIDOR
COMPLETE STREETS

SIGNING AND STRIPING PLAN
EXPOSITION DRIVE - STA 11+85 TO STA 15+91
CORRIDA DRIVE - STA 11+00 TO STA 15+00

PROJECT TITLE

SHEET TITLE



DESIGNED BY:	VH
DRAWN BY:	JP
CHECKED BY:	JG
APPROVED BY:	SF
SCALE:	1"=20'
DATE:	January 25
CITY SPECIFICATION NO.:	2001657
PLAN FILE NO./LOCATION:	2021-206-T-SPM_Greenway.dwg
SHEETING:	SPM-21

STRIPED BULBOUTS WITH FLEX POSTS TO REDUCE TURNING SPEEDS AT KEY INTERSECTIONS ALONG GREENWAY ROUTE (TYP)



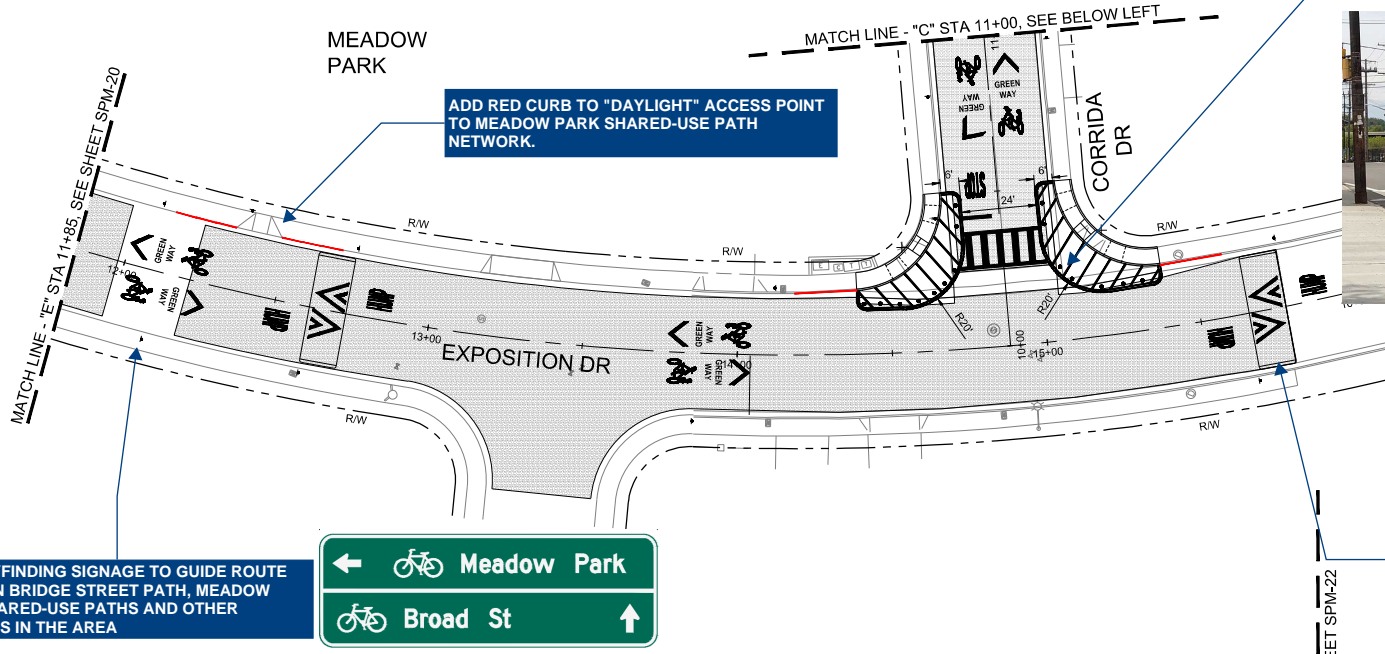
INSTALL SPEED HUMPS ALONG GREENWAY ROUTE WHERE EXISTING VEHICLE SPEEDS > 25 MPH (TYP)

ADD RED CURB TO "DAYLIGHT" ACCESS POINT TO MEADOW PARK SHARED-USE PATH NETWORK.

MEADOW PARK

MATCH LINE - "C" STA 11+00, SEE BELOW LEFT

MATCH LINE - "E" STA 11+85, SEE SHEET SPM-20

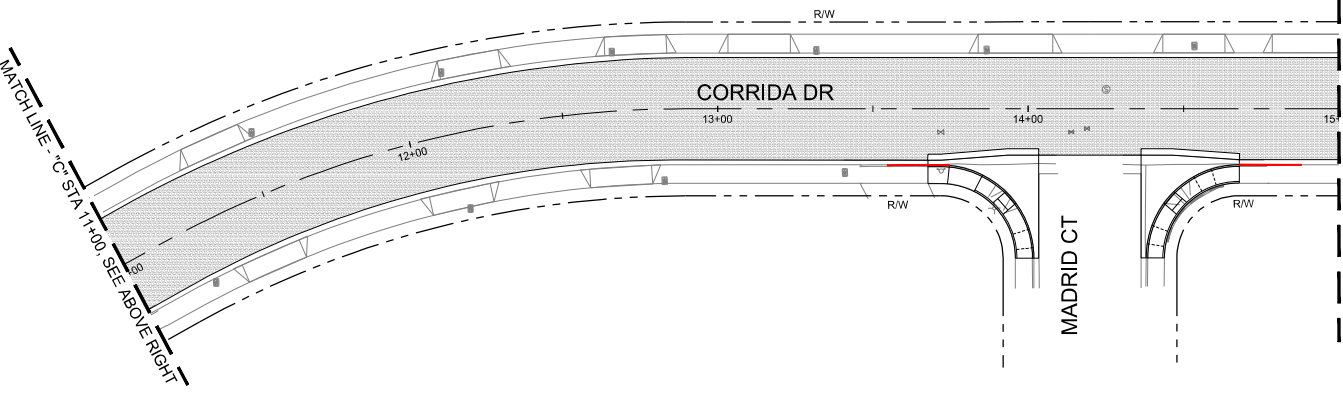


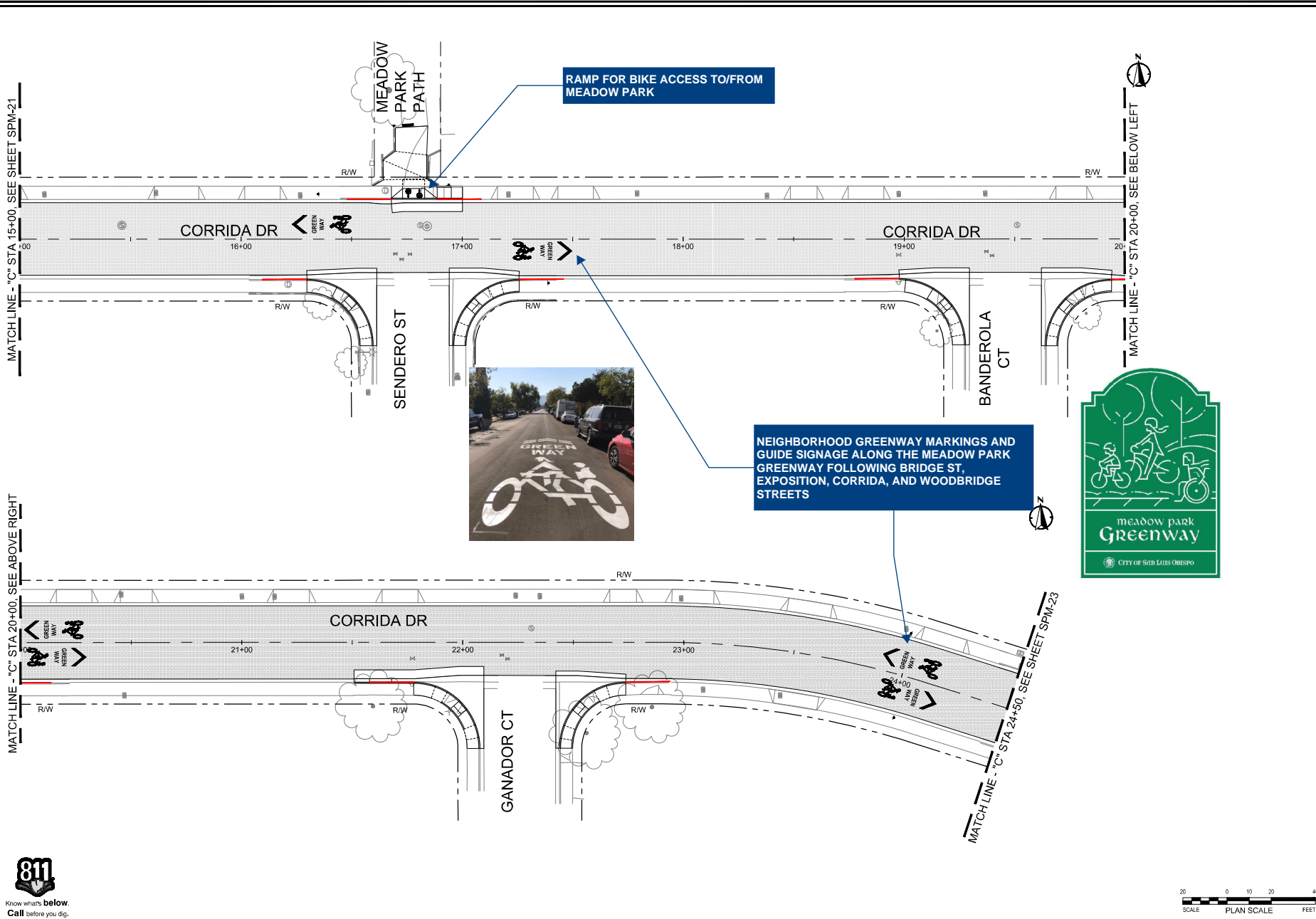
ADD WAYFINDING SIGNAGE TO GUIDE ROUTE BETWEEN BRIDGE STREET PATH, MEADOW PARK SHARED-USE PATHS AND OTHER BIKEWAYS IN THE AREA



MATCH LINE - "C" STA 15+00, SEE SHEET SPM-22

MATCH LINE - "C" STA 11+00, SEE ABOVE RIGHT



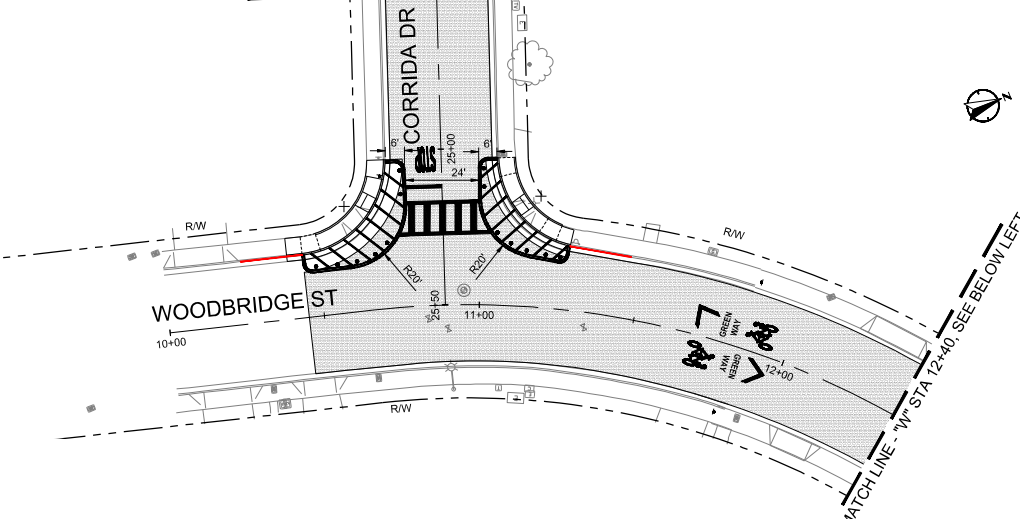


PROJECT TITLE:
**HIGUERA CORRIDOR
 COMPLETE STREETS**
 SHEET TITLE:
**SIGNING AND STRIPING PLAN
 CORRIDA DRIVE - STA 15+00 TO STA 24+50**



DESIGNED BY:	VH
DRAWN BY:	JP
CHECKED BY:	JG
APPROVED BY:	SF
SCALE:	1"=20'
DATE:	January 25
CITY SPECIFICATION NO.:	2001557
PLAN FILE NO./LOCATION:	2021-206-T-SPM_Greenway.dwg
SHEETING:	SPM-22
	88 of 94

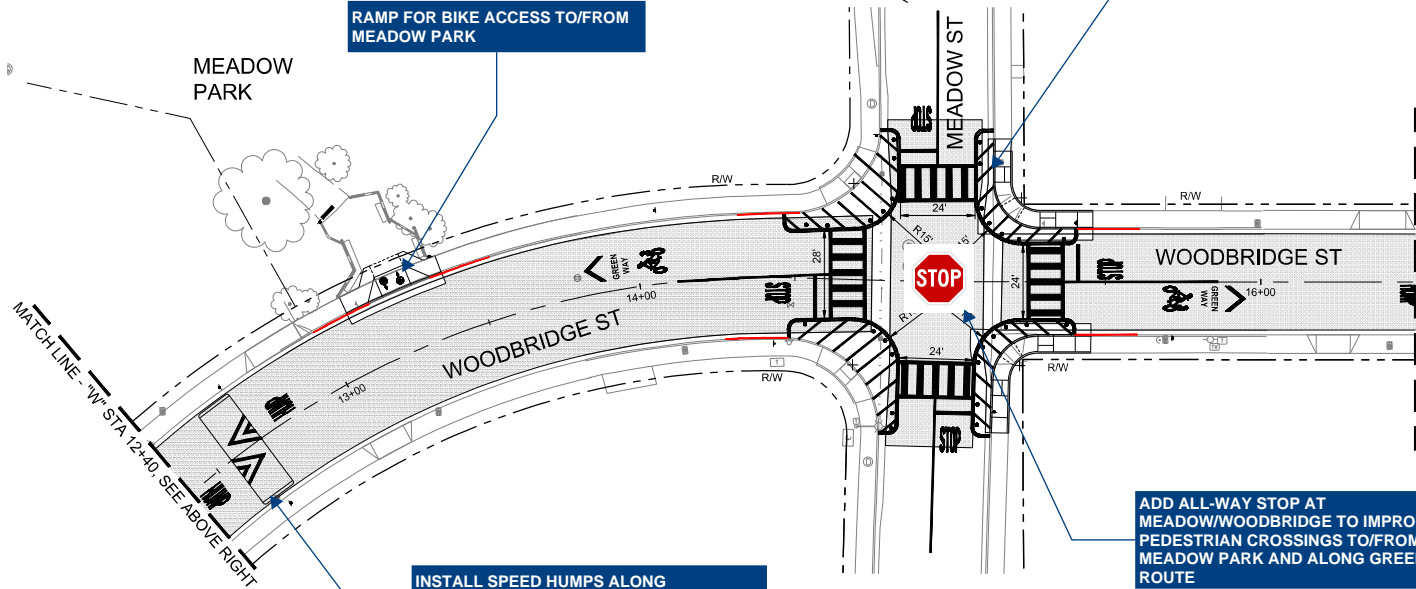
MATCH LINE - "C" STA 24+50, SEE SHEET SPM-22



STRIPED BULBOUTS WITH FLEX POSTS TO REDUCE TURNING SPEEDS AT KEY INTERSECTIONS ALONG GREENWAY ROUTE (TYP)

RAMP FOR BIKE ACCESS TO/FROM MEADOW PARK

MEADOW PARK

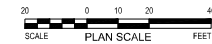


INSTALL SPEED HUMPS ALONG GREENWAY ROUTE WHERE EXISTING VEHICLE SPEEDS > 25 MPH (TYP)

ADD ALL-WAY STOP AT MEADOW/WOODBRIDGE TO IMPROVE PEDESTRIAN CROSSINGS TO/FROM MEADOW PARK AND ALONG GREENWAY ROUTE



Know what's below.
Call before you dig.



PROJECT TITLE:
**HIGUERA CORRIDOR
COMPLETE STREETS**

SHEET TITLE:
**SIGNING AND STRIPING PLAN
WOODBRIDGE STREET - STA 10+45 TO STA 16+50**



DESIGNED BY:	VH
DRAWN BY:	JP
CHECKED BY:	JG
APPROVED BY:	SF
SCALE:	1"=20'
DATE:	January 25, 2021
CITY SPECIFICATION NO.:	2001557
PLAN FILE NO./LOCATION:	2021-206-T-SPM_Greenway.dwg
SHEETING:	SPM-23



PROJECT TITLE:
**HIGUERA CORRIDOR
 COMPLETE STREETS**

SHEET TITLE:
**SIGNING AND STRIPING PLAN
 WOODBRIDGE STREET - STA 16+50 TO STA 22+00**



DESIGNED BY:
 VH

DRAWN BY:
 JP

CHECKED BY:
 JG

APPROVED BY:
 SF

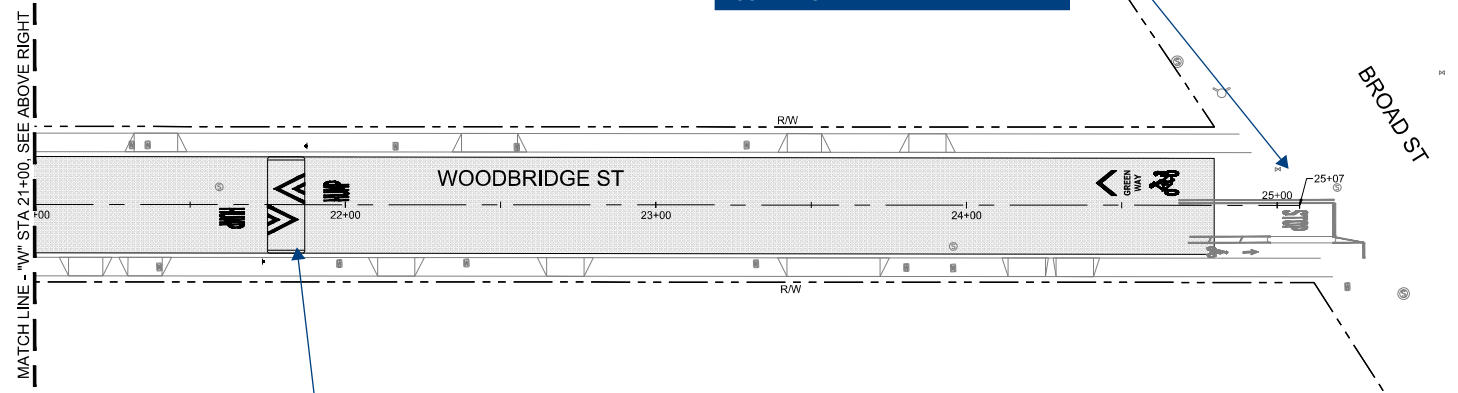
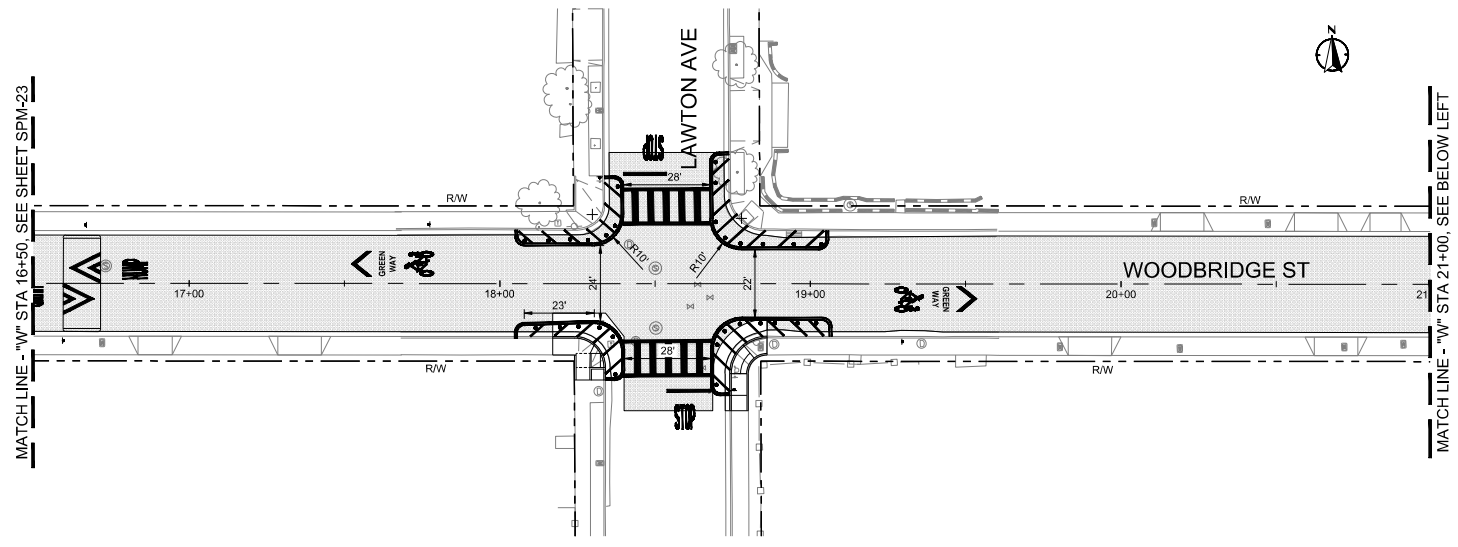
SCALE:
 1"=20'

DATE:
 January 25

CITY SPECIFICATION NO.
 2001657

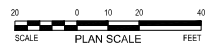
PLAN FILE NO./LOCATION
 2021-206-T-SPM_Greenway.dwg

SHEETING:
 SPM-24



**CONNECT TO EXISTING PEDESTRIAN
 HYBRID BEACON CROSSING AT BROAD &
 WOODBRIDGE**

**INSTALL SPEED HUMPS ALONG
 GREENWAY ROUTE WHERE EXISTING
 VEHICLE SPEEDS > 25 MPH (TYP)**



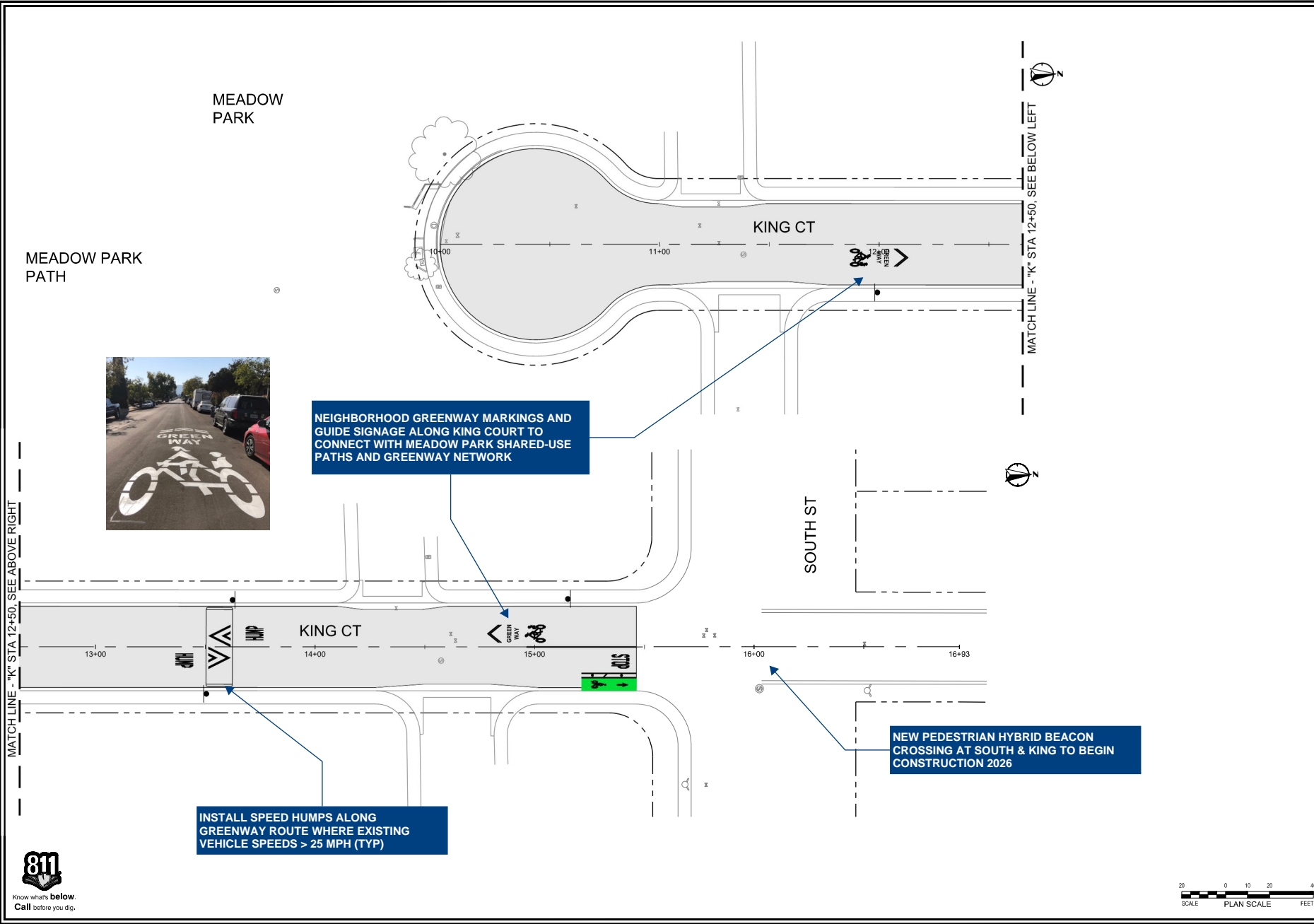


**HIGUERA CORRIDOR
COMPLETE STREETS**
SIGNING AND STRIPING PLAN
KING COURT - STA 12+00 TO STA 15+00

PROJECT TITLE
SHEET TITLE



DESIGNED BY: VH
DRAWN BY: JP
CHECKED BY: JG
APPROVED BY: SF
SCALE: 1"=20'
DATE: April 28, 2025
CITY SPECIFICATION NO.: 2001657
PLAN FILE NO./LOCATION: 2021-206-T-SPM_Greenway.dwg
SHEETING: SPM-25



NEIGHBORHOOD GREENWAY MARKINGS AND GUIDE SIGNAGE ALONG KING COURT TO CONNECT WITH MEADOW PARK SHARED-USE PATHS AND GREENWAY NETWORK

INSTALL SPEED HUMPS ALONG GREENWAY ROUTE WHERE EXISTING VEHICLE SPEEDS > 25 MPH (TYP)

NEW PEDESTRIAN HYBRID BEACON CROSSING AT SOUTH & KING TO BEGIN CONSTRUCTION 2026

MATCH LINE - "K" STA 12+50. SEE ABOVE RIGHT

