

# Signage Program

## **Bullock Ranch Tentative Tract 3136**

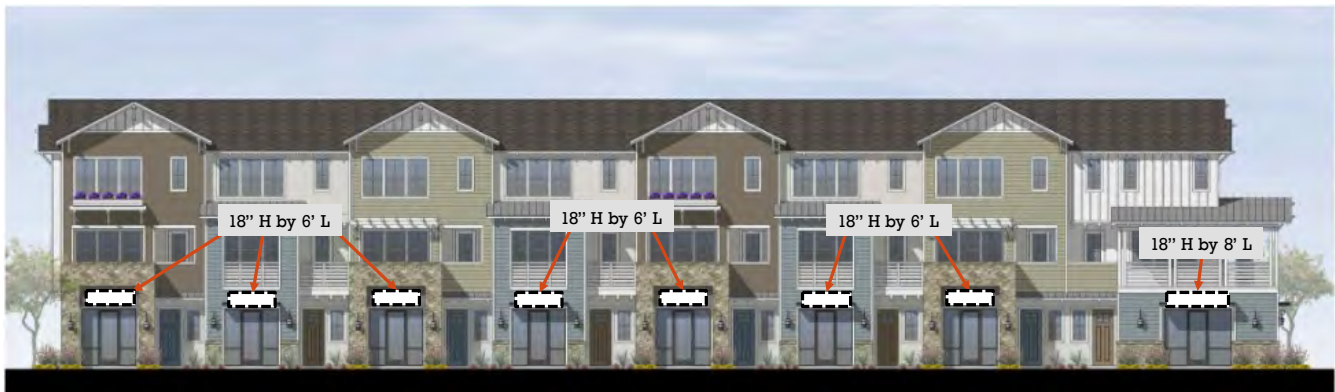
### **Allowed Commercial Signage at Mixed Used Building facing Ranch House Road and Recreation Building at western terminus of private Sponza extension**

*The following regulations shall govern allowed signage types and locations on the above referenced building.*

#### **General:**

The project includes a sign program as required by Section 15.40.485 of the Municipal Code. The purpose of this sign program is to provide for project specific designs and sign accommodations that are compatible and appropriate signage which is compatible with the building design and site layout.

#### **Allowed Locations are as follows:**



Right Elevation



# Signage Program

## Allowed Types:

This sign program includes a total of 11 signs. Table 1 breaks down the sign type, quantity, and size of each sign as shown on building elevations. Signage would be allowed on metal awnings over the door or on the wall for each live/work, commercial space and the recreation building. Wall signs can be made from wood, metal, or plastic. Wall signs may be painted on the wall or on a board that is attached to the wall. Signs may be illuminated externally or internally consistent with Municipal Code Section 15.40.430.

**Table 1**

Sign Type	Quantity	Maximum Size and dimensions
Awning Sign	3	18 inches x 6 feet (9 square feet)
Wall Sign	4	18 inches x 6 feet (9 square feet)
Awning Sign (corner commercial space)	1	18 inches x 8 feet (12 square feet)
Awning Sign (corner commercial space)	1	18 inches x 12 feet (18 square feet)
Residential Monument Sign	1	30 square feet (approx. 4 feet x 12 feet)
Apartment Community Sign	1	18 inches x 24 feet (36 square feet)
Total No. of Signs	11	

## Residential Monument Sign

The following design shown below shall govern the allowed one (1) residential monument sign for the project site. Sign materials include stucco, terra cotta, decorative spanish tile and lazer-cut lettering.

