

## Memorandum

To: Joshua Davis  
2777 Flora Street  
San Luis Obispo CA 93401  
503.329.9580  
joshua.ac.davis@gmail.com

From: Sam Oakley  
Master Arborist WE-9474B  
Consulting Arborist #556  
415.407.6995  
sam@oakleygroup.org

Subject: Tree Assessment at 2777 Flora Street, San Luis Obispo

Date: February 17, 2025

---

---

### Introduction

We were asked to prepare an arborist report for five (5) *Washingtonia robusta* (Mexican Fan Palm) tree at 2777 Flora Street in San Luis Obispo, California.

### Observations

The five subject trees are *Washingtonia robusta*, 17-, 26-inches DSH, and a 21, 22, and 36-inch DSH cluster (Fig. 1).

They are growing in a narrow, raised planter bordering the northwest property line in the backyard of the 2777 Flora Street property (Fig. 2).

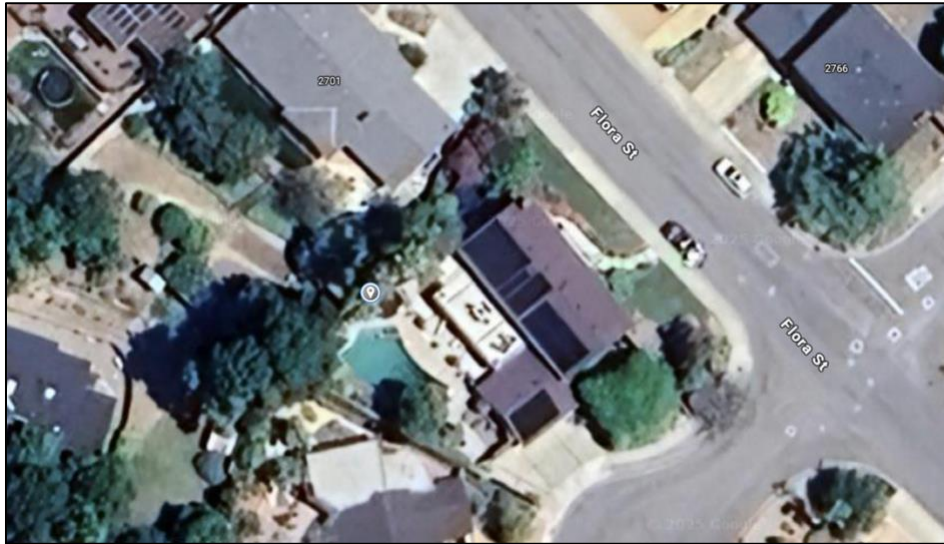
The palms are in fair health with front tip necrosis and frond dieback typical of the species.

They are 60- to 70-feet in height.

The palms share their planter with a native oak, pittosporum shrubs, and several smaller palm trees (Fig. 3).



Figure 1: image of the subject palms in their planter.



*Figure 2: subject palms location at 2777 Flora Street (grey marker).*



*Figure 3: the narrow planter the palms are growing in (red arrow showing the heat pipe that need replacement).*



## Discussion

The palms are considered regulated pursuant to Chapter 12.24.090 of the SLOMC.

The primary concern regarding these palms is that the palms have outgrown their planter, and you would like them removed. I agree that the planter is inadequate for their future growth and they should be removed.



*Figure 4: potential replanting locations along El Paseo Court.*

Secondly, you have had several near-misses of fronds that have fallen and struck the ground at terminal velocity, and you are concerned that eventually a falling frond will injure someone. Annual pruning can mitigate the potential for fronds to build up in the crown and fall.

Lastly, you expressed that the pool's solar water heater piping needs repairing and cannot be done without the palms removed. I have confirmed that the palm trunks are growing directly into the pipe. Removing and repairing/replacing the pipe would cause irreparable damage to the trunks of several palms.

Removal of these palms would likely require replacement. We have determined that at least three (3) replacement trees could be located along the street frontage of El Paseo Court (Fig. 4). Other trees can be located within the front yard landscaping.

## Recommendations

I recommend that you consider removing the palms to repair the water heater piping. I recommend that you:

- An application for removal be prepared and submitted. If removal is granted, remove the palms and perform repairs to the infrastructure as soon as possible. Replace as required.