

general notes:

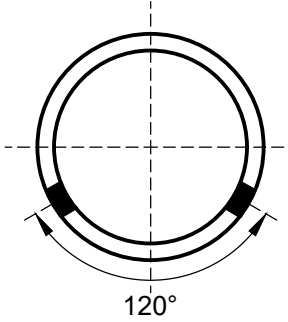
1. IT SHALL BE THE RESPONSIBILITY OF THE CONTRACTOR OR PERMITTEE TO CONTACT "UNDERGROUND SERVICE ALERT OF NORTHERN CALIFORNIA" BY PHONE AT 8-1-1 FORTY-EIGHT (48) HOURS PRIOR TO START OF CONSTRUCTION FOR LOCATION OF POWER, TELEPHONE, OIL AND NATURAL GAS UNDERGROUND FACILITIES. CONTRACTOR OR PERMITTEE SHALL ALSO CONTACT THE APPROPRIATE AGENCY FOR THE LOCATION OF CABLE T.V., WATER, SEWER, DRAINAGE OR UNDERGROUND FACILITIES.
2. THE CONTRACTOR SHALL POSSESS A CLASS "A" OR "C27" LICENSE AT THE TIME OF BID OPENING.

IRRIGATION NOTES

1. ELECTRIC CONTROL VALVES TO BE OPERATED BY EXISTING CONTROLLER. CONTRACTOR TO CONNECT ALL NEW VALVE AND SENSOR WIRES TO EXISTING CONTROLLER AS PART OF THIS PROJECT.
2. COVERAGE TEST - CONTRACTOR TO ADJUST ALL SPRINKLERS AND VALVES FOR PROPER OPERATION & COVERAGE. SPRINKLERS SHALL BE ADJUSTED SO THAT NO WATER IS THROWN ON TO THE FENCE. REDUCE OVERTHROW ONTO DECOMPOSED GRANITE AREAS AND SKINNED INFIELD.
3. EXISTING UNDERGROUND UTILITIES EXIST WITHIN PROJECT BOUNDARY. CONTRACTOR MUST TAKE PRECAUTIONS TO PROTECT EXISTING ELECTRICAL LINES. SEE "EXISTING UTILITY PLAN," THIS SHEET.
4. THE EXISTING ELECTRIC CONTROL VALVES AND ROTORS MUST BE REMOVED AND RETURNED TO THE CITY OF SAN LUIS OBISPO'S PARK MAINTENANCE PERSONNEL. REMOVE ALL EXISTING IRRIGATION BOXES.
5. ALL EXISTING IRRIGATION LINE WILL BE ABANDONED AND LEFT IN PLACE, EXCEPT FOR PIPE THAT IS EXPOSED OR IN THE WAY OF THE INSTALLATION OF THE NEW IRRIGATION SYSTEM. THIS PIPE SHALL BE REMOVED AND DISPOSED.
8. ALL IRRIGATION BOXES LOCATED WITHIN THE FIELD MUST BE BURIED 6" BELOW FINISHED GRADE. ALL BOXES LOCATED OUTSIDE OF THE FIELD MUST BE FLUSH WITH FINISHED GRADE
9. CONTRACTOR TO COORDINATE SITE WORK WITH CITY OF SAN LUIS OBISPO'S MAINTENANCE PERSONNEL.
10. BACKFILL OF TRENCHES IN STADIUM WARNING TRACKS AND INFIELD (ALL NON-GRASS AREAS) MUST BE WITH 6040 FIELD MIX (SEE APPENDIX D OF SPECIAL PROVISIONS)
11. ROTOR LOCATIONS ARE TO SCALE. PIPE LOCATIONS ARE DIAGRAMMATIC.

DRAINAGE NOTES

1. ALL EXISTING DRAINAGE LINE WILL BE ABANDONED AND LEFT IN PLACE, EXCEPT FOR PIPE THAT IS EXPOSED OR IN THE WAY OF THE INSTALLATION OF THE NEW DRAINAGE SYSTEM. THIS PIPE SHALL BE REMOVED AND DISPOSED.
2. PERFORATED PIPE MUST SDR 35 PVC WITH 2 ROWS OF HOLES (1/2" DIA.) AT 5" SPACING AND 120° APART. PERFORATED PIPE MUST BE INSTALLED WITH HOLES POINTED DOWNWARD PER DETAIL, THIS SHEET. USE SOLVENT WELDED FITTINGS.
8. ALL DRAINAGE BOXES LOCATED WITHIN THE FIELD MUST BE BURIED 6" BELOW FINISHED GRADE. ALL BOXES LOCATED OUTSIDE OF THE FIELD MUST BE FLUSH WITH FINISHED GRADE

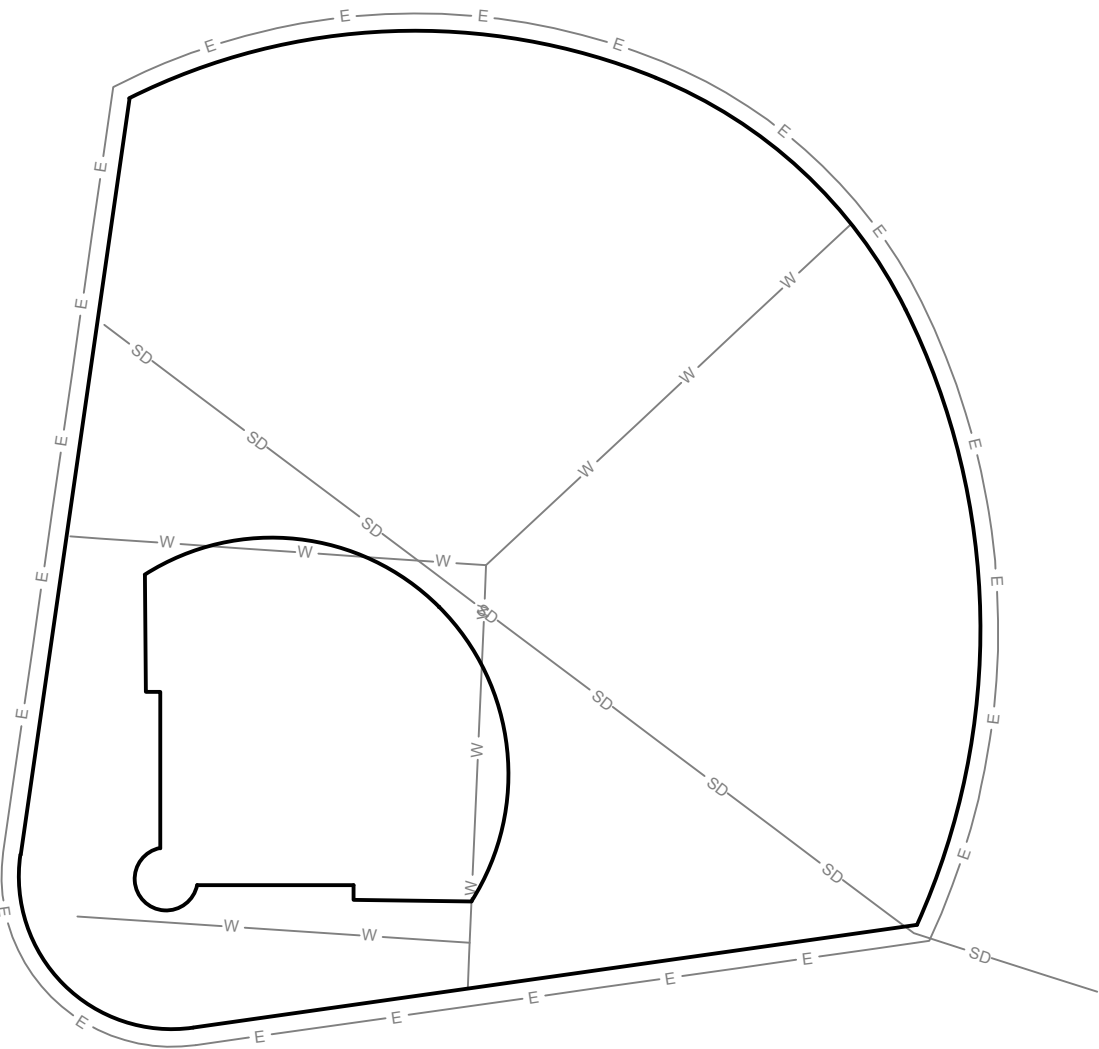


PERFORATED PIPE

GENERAL NOTE

1. IRRIGATION AND DRAINAGE LAYOUTS MUST BE FLAGGED AND BE APPROVED BY THE ENGINEER PRIOR TO TRENCHING. REFER TO SECTION 20-1 OF THE CITY STANDARD SPECIFICATIONS FOR ADDITIONAL LAYOUT REQUIREMENTS.
2. IRRIGATION AND DRAINAGE COMPONENTS MUST BE AS LISTED OR APPROVED EQUAL.

EXISTING UTILITY PLAN



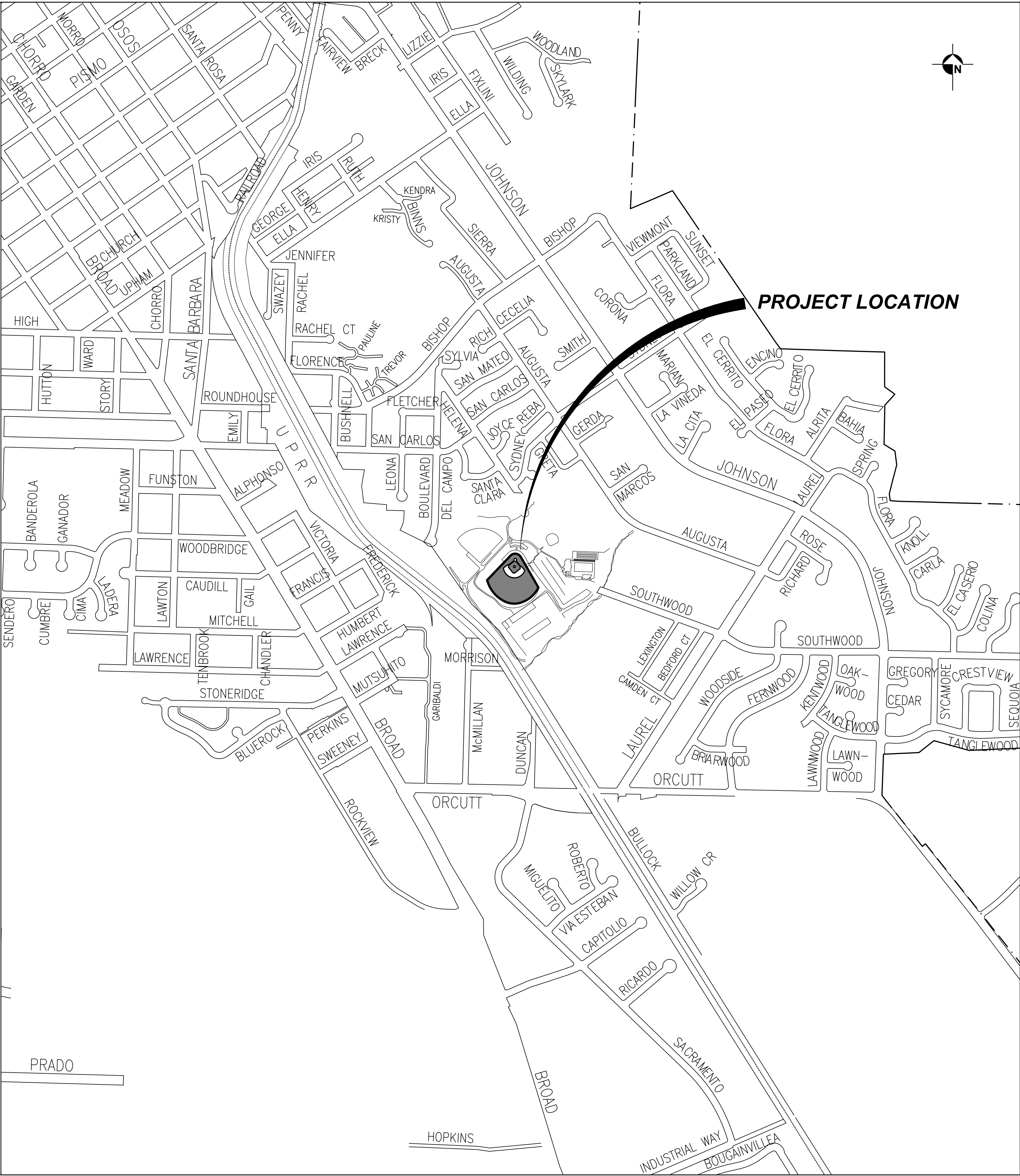
- LEGEND
- SD

EXISTING SUB-SURFACE DRAIN LINE, LATERALS NOT SHOWN FOR CLARITY
- W

EXISTING IRRIGATION MAINLINE, LATERALS NOT SHOWN FOR CLARITY
- E

EXISTING ELECTRICAL LINE

NOTES  
SEE APPENDIX B OF THE SPECIAL PROVISIONS FOR IRRIGATION AND DRAINAGE AS-BUILTS



index to plans

sheet no.	description
1	COVER SHEET
2	IRRIGATION & DRAINAGE PLAN

Reference Documents:  
City Standard Specifications - May 2020 Edition  
City Engineering Standards - May 2020 Edition



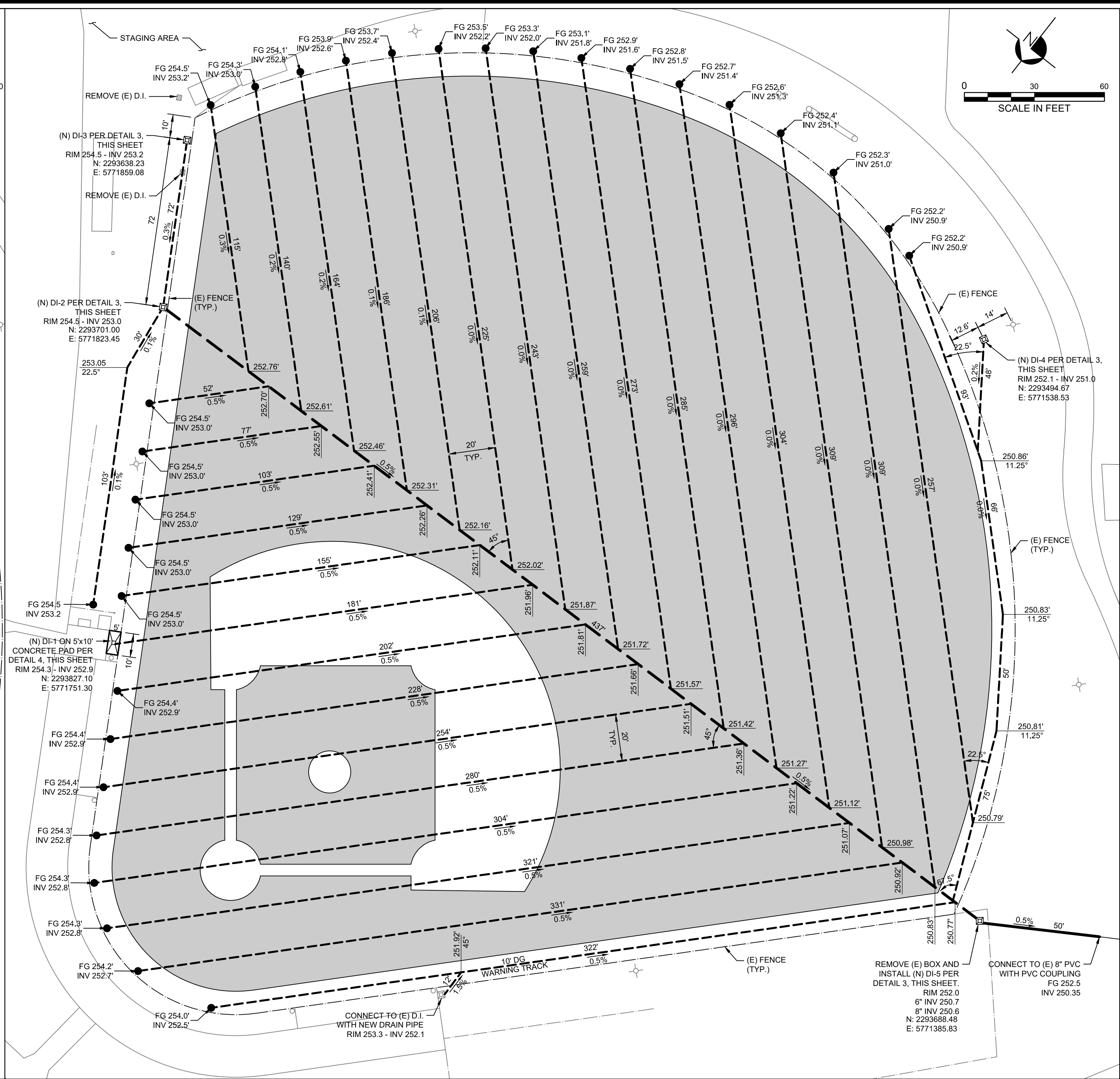
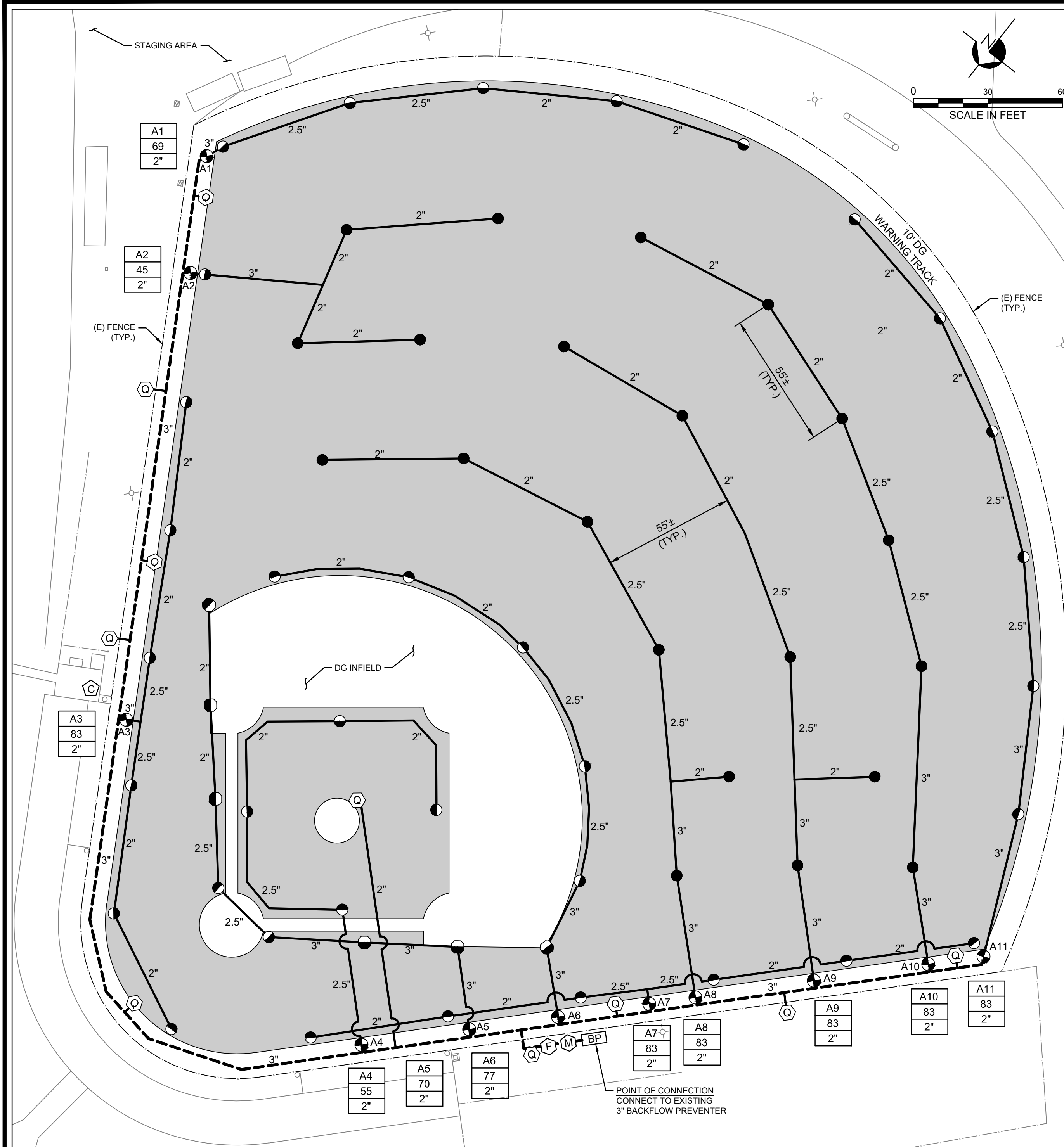
san luis obispo county, california

SINSHEIMER IRRIGATION & DRAINAGE

APPROVED BY

Brian A. Nelson, City Engineer      R.C.E. C79870      Approved Date

SPECIFICATION NO.	DATE	SHEET
91658	MARCH 2021	1 of 2
	FILE NO./LOCATION	



### IRRIGATION LEGEND

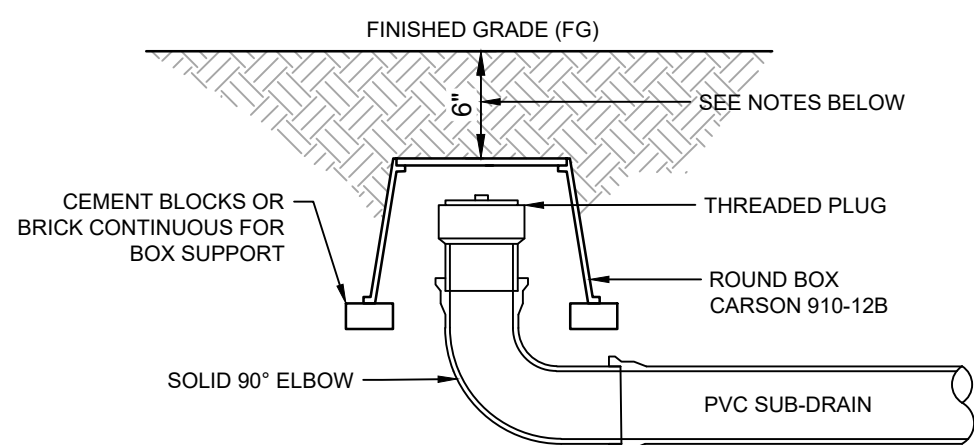
- INSTALL ROTOR PER ENG STD 8650  
HUNTER ROTOR MODEL I-40-06-SS-15  
NOZZLE PERFORMANCE:  
#15@ 50 PSI - 13.8 GPM (54' RADIUS)
- INSTALL ROTOR PER ENG STD 8650  
HUNTER ROTOR MODEL I-40-06-SS-08  
NOZZLE PERFORMANCE:  
#08@ 50 PSI - 8.4 GPM (45' RADIUS)
- HUNTER ICVIBV ELECTRIC CONTROL VALVE SIZE AS SHOWN  
INSTALL VALVE AND BOX PER ENG STD 8620. BOXES MUST BE INSTALLED  
WITHIN THE WARNING TRACK DIRECTLY ADJACENT TO THE TURF.
- Q INSTALL QUICK COUPLER PER ENG STD 8630. INSTALL FLUSH WITH GRADE  
AND WITHOUT ROUND BOX WITHIN THE PLAYING FIELD.
- M INSTALL NEW 3" MASTER VALVE (SUPERIOR 3300 SERIES)  
INSTALL VALVE AND BOX PER ENG STD 8550
- F INSTALL NEW 3" RAINMASTER FLOW SENSOR PER ENG STD 8550
- C EXISTING IRRIGATION CONTROLLER
- BP EXISTING BACKFLOW PREVENTER
- MAINLINE SCH 40 PVC  
INSTALL PER ENG STD 8610 (24" MIN. DEPTH OF COVER)  
INSTALL TRACER WIRE PER ENG 6020 (NOTE 3)
- LATERAL SCH 40 PVC  
INSTALL PER ENG STD 8610 (24" MIN. DEPTH OF COVER)  
INSTALL TRACER WIRE PER ENG 6020 (NOTE 3)

### WATER REQUIREMENT

DOWNSTREAM OF BACKFLOW  
83 GPM @ 64 PSI

#### VALVE ID GUIDE

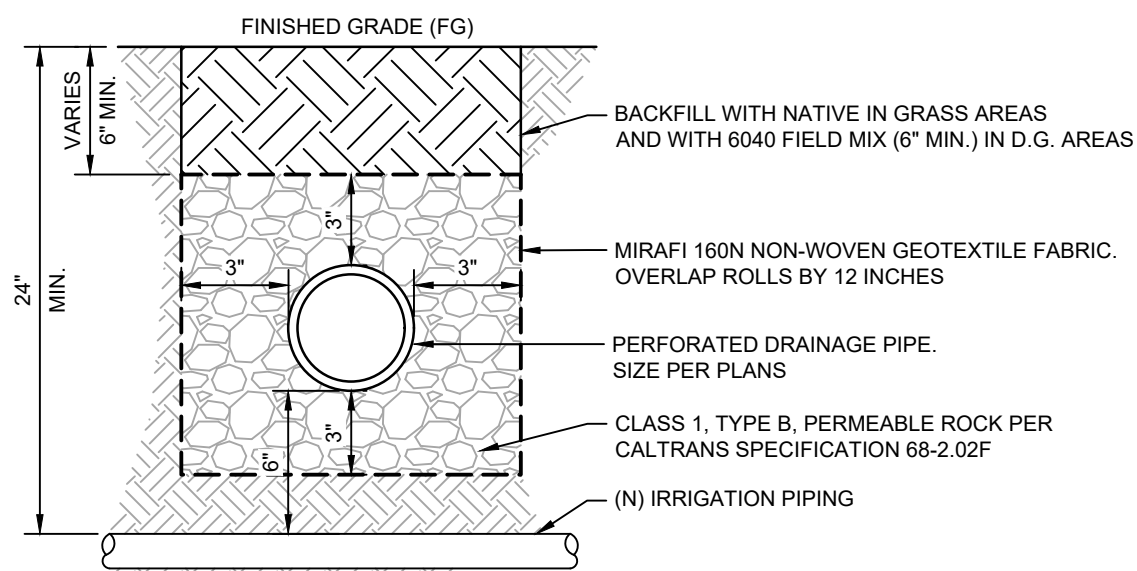
A1	STATION NUMBER
67	GPM
2"	CONTROL & ISOLATION VALVE SIZE



NOTES  
ALL DRAINAGE BOXES LOCATED WITHIN THE PLAYING FIELD MUST BE BURIED 6" BELOW GRADE  
ALL BOXES LOCATED OUTSIDE OF THE PLAYING FIELD MUST BE FLUSH WITH GRADE

### 1 DRAINAGE CLEANOUT

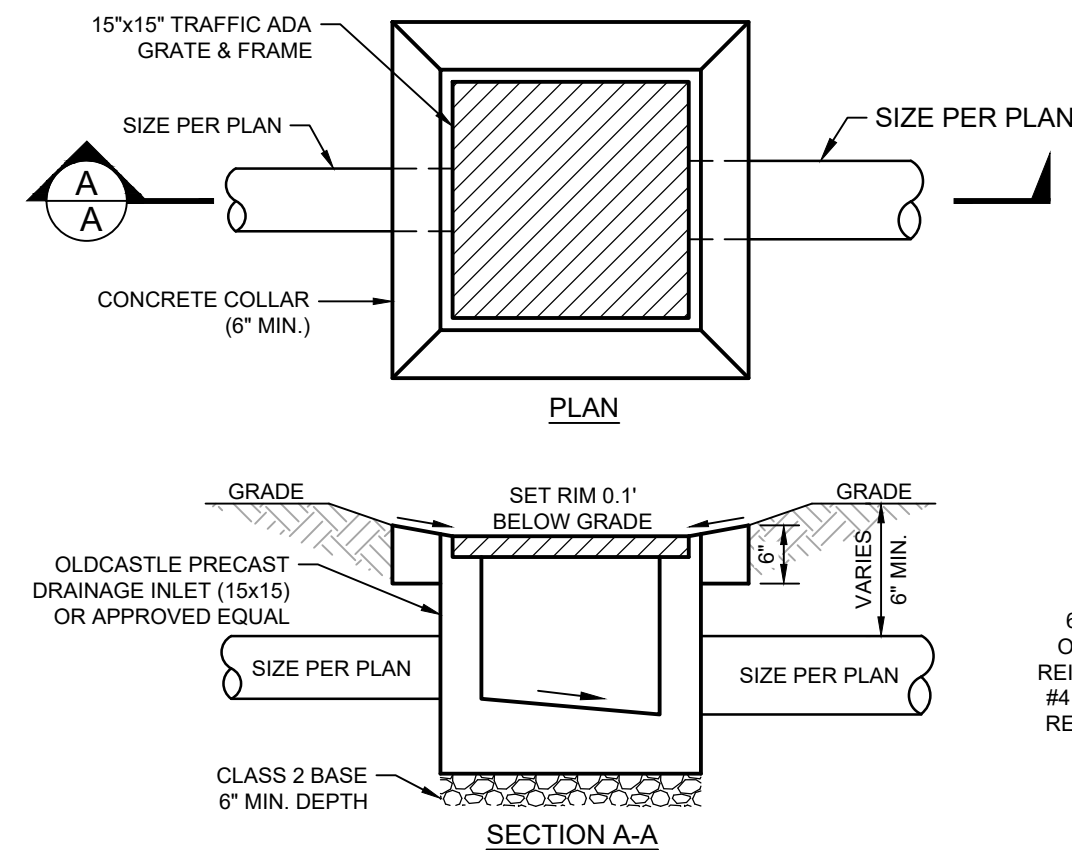
SCALE: NTS



- NOTES
- NATIVE MATERIAL TO BE USED AS BACKFILL MUST BE FINE EARTH MATERIAL FREE FROM CLODS, ROCKS, AND OTHER LARGE MATTER. IF EXISTING SOIL IS NOT ACCEPTABLE, THE CONTRACTOR MUST DISPOSE OF EXISTING AND IMPORT SOIL AS BACKFILL PER SECTION 20-3.02C(2).
  - MAINTAIN 6" MIN. OF VERTICAL SEPARATION BETWEEN (N) IRRIGATION PIPE AND (N) DRAINAGE PIPE. CONTRACTOR MUST LOWER SECTIONS OF IRRIGATION PIPING THAT DO NOT MEET THE SEPARATION REQUIREMENT.

### 2 DRAINAGE TRENCH

SCALE: NTS

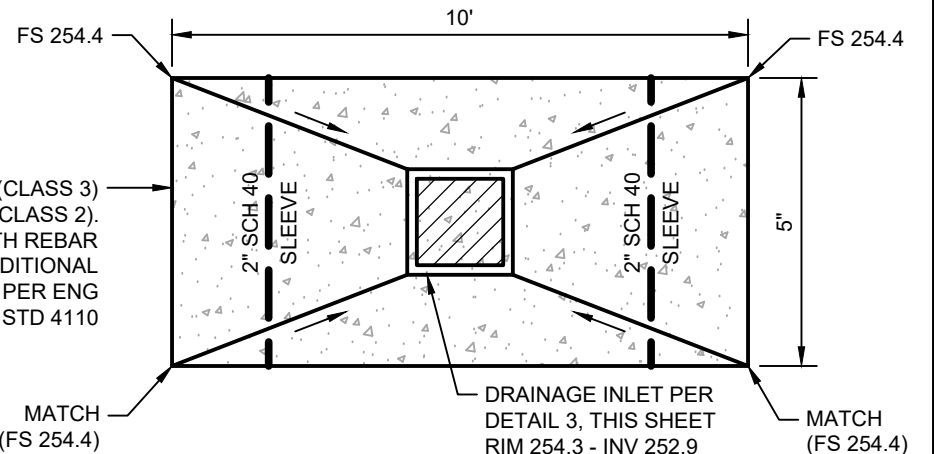


### 3 DRAINAGE INLET

SCALE: NTS

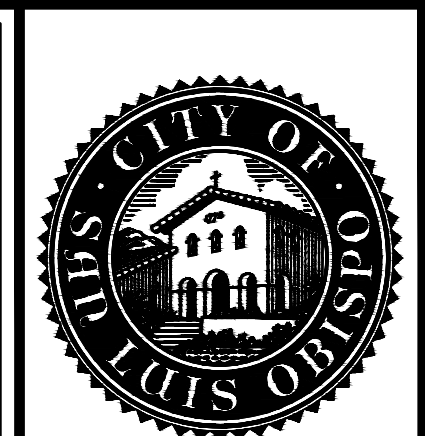
### DRAINAGE LEGEND

- INSTALL CLEANOUT PER DETAIL 1, THIS SHEET.  
INSTALL 1.0' MIN. FROM EXISTING FENCE
- 4" PVC SDR 35 PERFORATED DRAINAGE PIPE PER DETAIL 2.  
(SLOPE MAY BE LESS THAN 0.5%)
- 6" PVC SDR 35 PERFORATED DRAINAGE PIPE PER DETAIL 2.  
(0.5% MIN. SLOPE)
- 8" PVC SDR 35 SOLID DRAINAGE PIPE. TRENCH PER ENG. STD. 6030  
(0.5% MIN. SLOPE)
- TURF RENOVATION (PERENNIAL RYEGRASS) 108,000 SQFT±



### 4 CONCRETE PAD

SCALE: NTS



## SINSHEIMER IRRIGATION & STADIUM DRAINAGE

### IRRIGATION & DRAINAGE PLAN

PROJECT TITLE:

SHEET TITLE:



APPROVED: [Mo Day, Yr]
DESIGNED BY: HN
DRAWN BY: HN
CHECKED BY: MG
APPROVED BY: BN
SCALE: 1" = 30'
DATE: MARCH 2021
CITY SPECIFICATION NO. 91658
PLAN FILE NO. / LOCATION
SHEET NO.