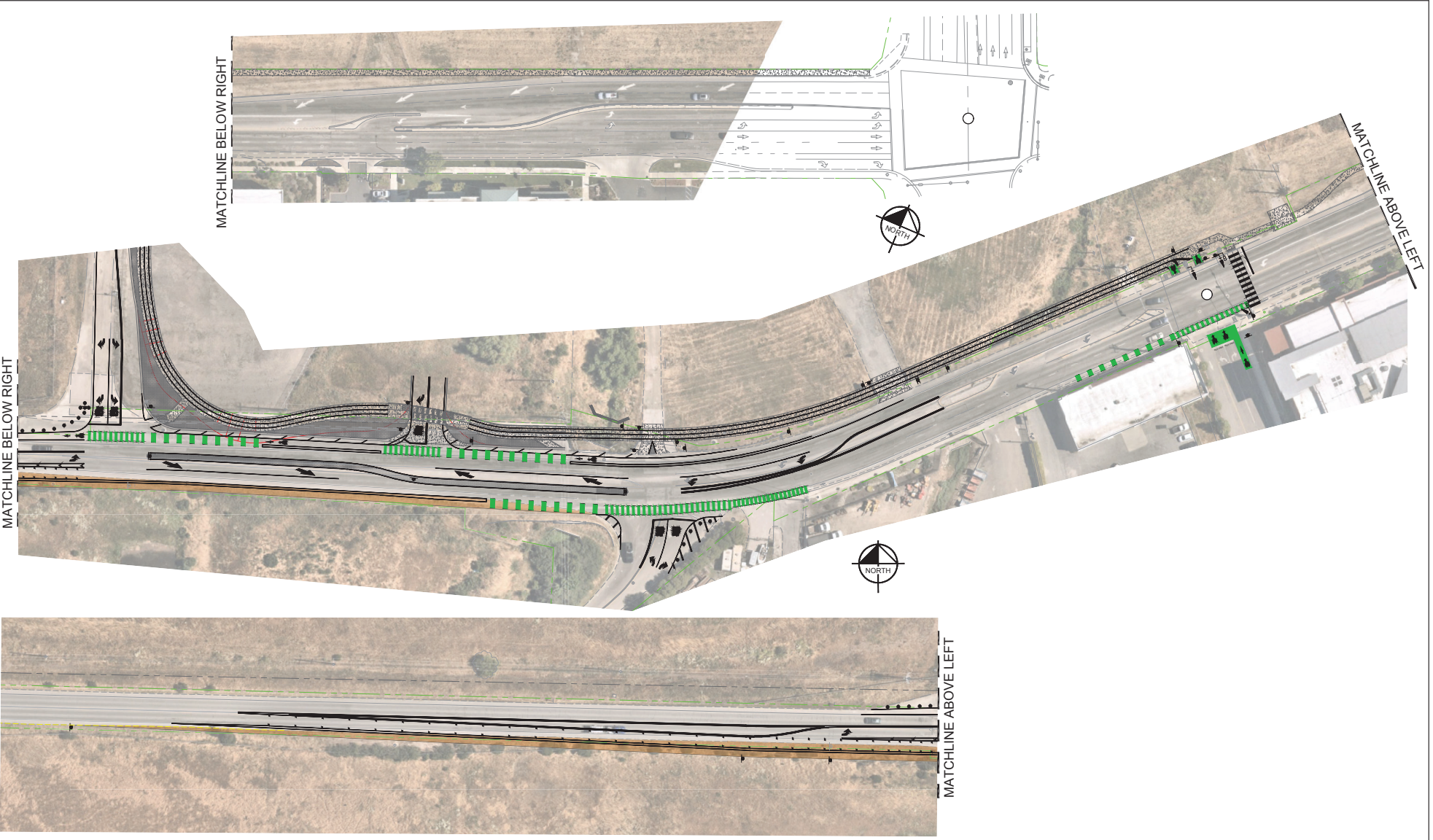
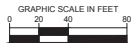


Plotted By: JH, Job: January 24, 2024, 03:03:30pm, K:\3042_TJFFC\100\10001_TJFFC_Plan_Roadway\3042_0303_2024_Plan_Covered_Topdown.mxd, User: jh, Project: Roadway Improvements for 600 Tank Farm Road, San Luis Obispo, CA. This drawing is a preliminary design and is not to be used for construction. It is subject to change without notice. All dimensions are in feet. The user is responsible for verifying the accuracy of the information provided.



- LEGEND**
- ROADWAY WIDENING
 - ROUNDABOUT IMPROVEMENTS NOT CONSTRUCTED
 - EXISTING RIGHT-OF-WAY
 - TS SIGNALIZED INTERSECTION



ENGINEER OF RECORD:
PRELIMINARY
 Kimley-Horn
 401 B STREET, SUITE 800, SAN DIEGO, CA 92101
 WWW.KIMLEY-HORN.COM

DEVELOPER:
 COVELOP INC
 1304 GARDEN ST
 SAN LUIS OBISPO, CA 93401

PREPARED BY:
Kimley-Horn
 © 2023 KIMLEY-HORN AND ASSOCIATES, INC.
 401 B STREET, SUITE 800, SAN DIEGO, CA 92101
 PHONE: 619-234-9411

CITY OF SAN LUIS OBISPO 600 TANK FARM RD SAN LUIS OBISPO, CA 93401	SCALE: AS SHOWN SHEET No. - OF -
---	---

DATE: 11/14/2024