

BA 68-100400

**CITY OF SAN LUIS OBISPO
US 101 / PRADO ROAD NB PA/RS
TYPICAL SECTIONS AND LAYOUTS
ALT 43 STRUCTURE**



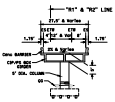
- LEGEND & ABBREVIATIONS**
- SERVICE SIGN OR SYMBOL OF ROAD PA
 - ▭ ROAD AND SIDEWALK
 - ▭ SIDEWALK
 - ▭ EXIST. ASP
 - ▭ PROPOSED EXIST. ASP
 - ▭ EXIST. CURB

LINE DATA

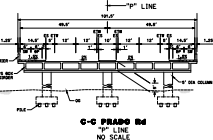
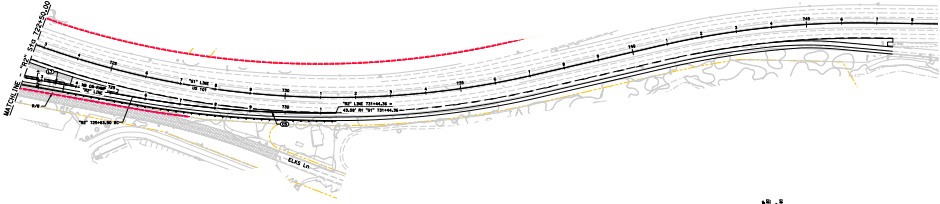
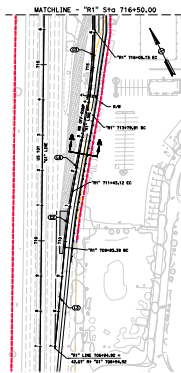
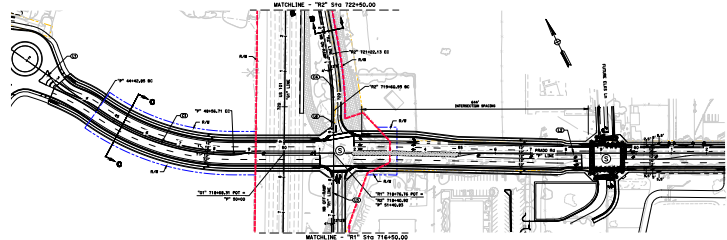
NO.	ALIGNMENT	LENGTH	GRADE
1	101 NB	100.00	0.00%
2	101 SB	100.00	0.00%
3	101 NB	100.00	0.00%
4	101 SB	100.00	0.00%
5	101 NB	100.00	0.00%
6	101 SB	100.00	0.00%
7	101 NB	100.00	0.00%
8	101 SB	100.00	0.00%
9	101 NB	100.00	0.00%
10	101 SB	100.00	0.00%

SMITH DATA

NO.	STATION	GRADE	LENGTH
1	101 NB	0.00%	100.00
2	101 SB	0.00%	100.00
3	101 NB	0.00%	100.00
4	101 SB	0.00%	100.00
5	101 NB	0.00%	100.00
6	101 SB	0.00%	100.00
7	101 NB	0.00%	100.00
8	101 SB	0.00%	100.00
9	101 NB	0.00%	100.00
10	101 SB	0.00%	100.00



**A-A NB OFF-RAMP
8'-0" NB ON-RAMP
1"16 SCALE**



**C-C PRADO SB
7' LINE
NO SCALE**

PEAK HOUR TURNING MOVEMENTS



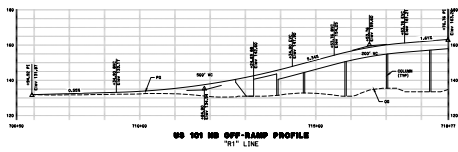
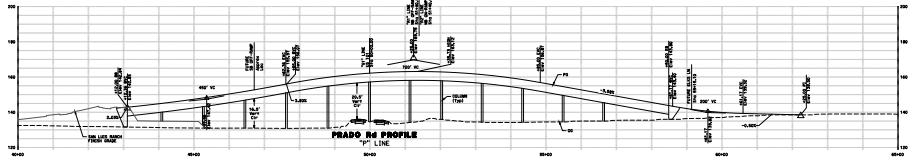
**8:00 AM TRAFFIC VOLUMES
PRADO SB / NB NB ON/OFF RAMP
PEAK HOUR VOLUME/LOS AM (PM)**



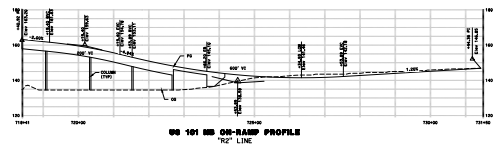
**2:00 PM TRAFFIC VOLUMES
PRADO SB / NB NB ON/OFF RAMP
PEAK HOUR VOLUME/LOS AM (PM)**

EXIST LOSS: A (B)

2045 LOSS: B (A)



**US 101 NB OFF-RAMP PROFILE
7'11" LINE**



**US 101 NB ON-RAMP PROFILE
5'02" LINE**