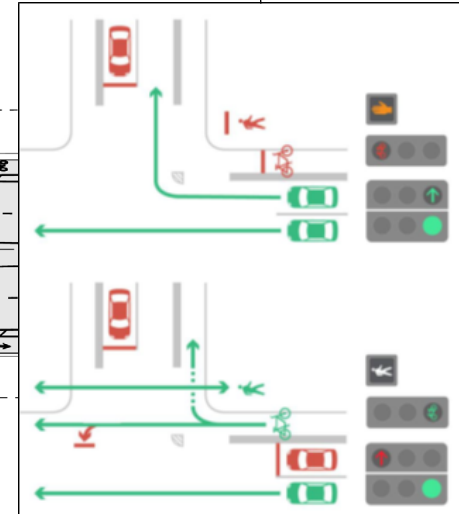
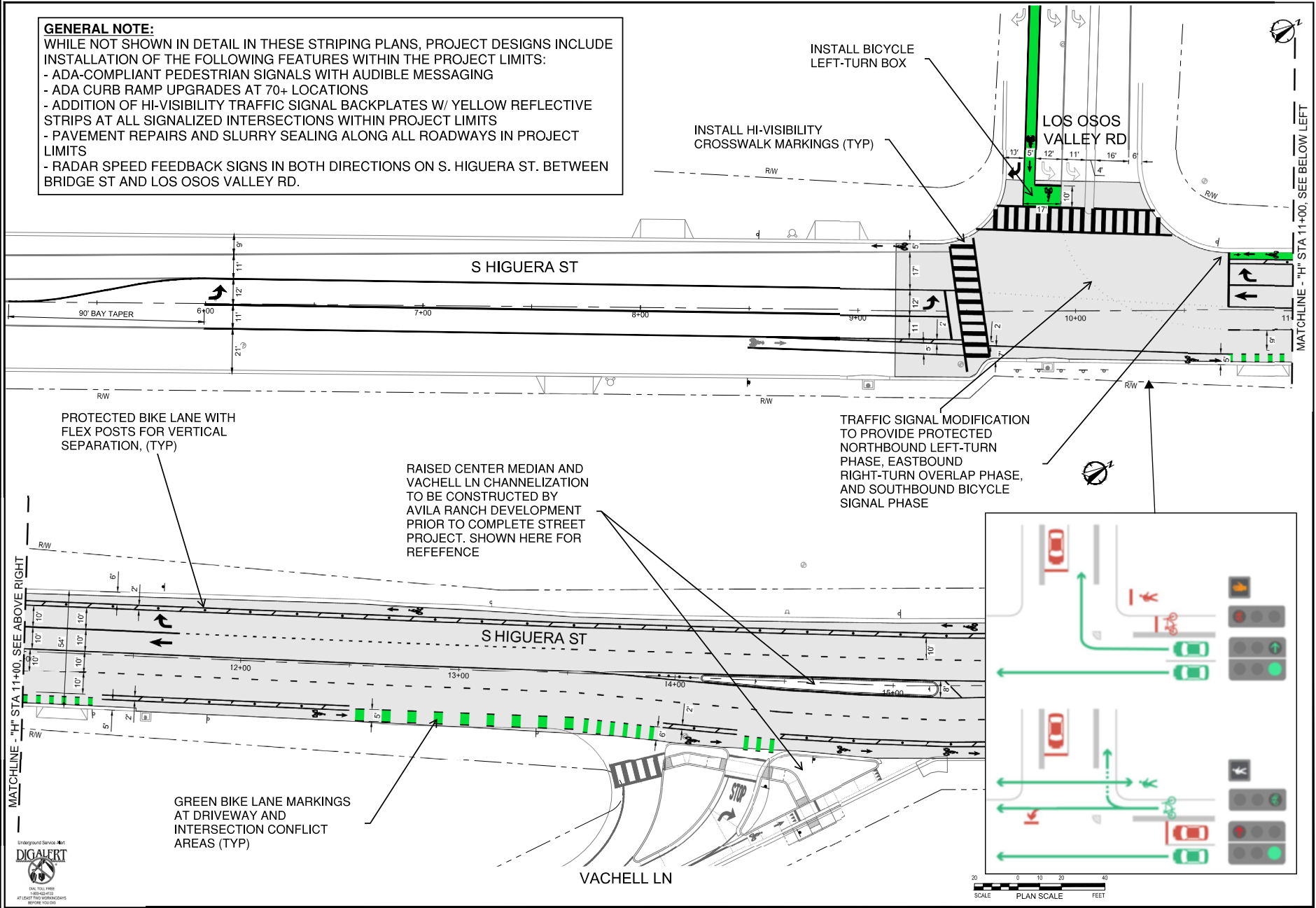


# **GENERAL NOTE:**

WHILE NOT SHOWN IN DETAIL IN THESE STRIPING PLANS, PROJECT DESIGNS INCLUDE INSTALLATION OF THE FOLLOWING FEATURES WITHIN THE PROJECT LIMITS:

- ADA-COMPLIANT PEDESTRIAN SIGNALS WITH AUDIBLE MESSAGING
- ADA CURB RAMP UPGRADES AT 70+ LOCATIONS
- ADDITION OF HI-VISIBILITY TRAFFIC SIGNAL BACKPLATES W/ YELLOW REFLECTIVE STRIPS AT ALL SIGNALIZED INTERSECTIONS WITHIN PROJECT LIMITS
- PAVEMENT REPAIRS AND SLURRY SEALING ALONG ALL ROADWAYS IN PROJECT LIMITS
- RADAR SPEED FEEDBACK SIGNS IN BOTH DIRECTIONS ON S. HIGUERA ST. BETWEEN BRIDGE ST AND LOS OSOS VALLEY RD.



20 0 10 20 40  
SCALE PLAN SCALE FEET



## **HIGUERA CORRIDOR COMPLETE STREETS**

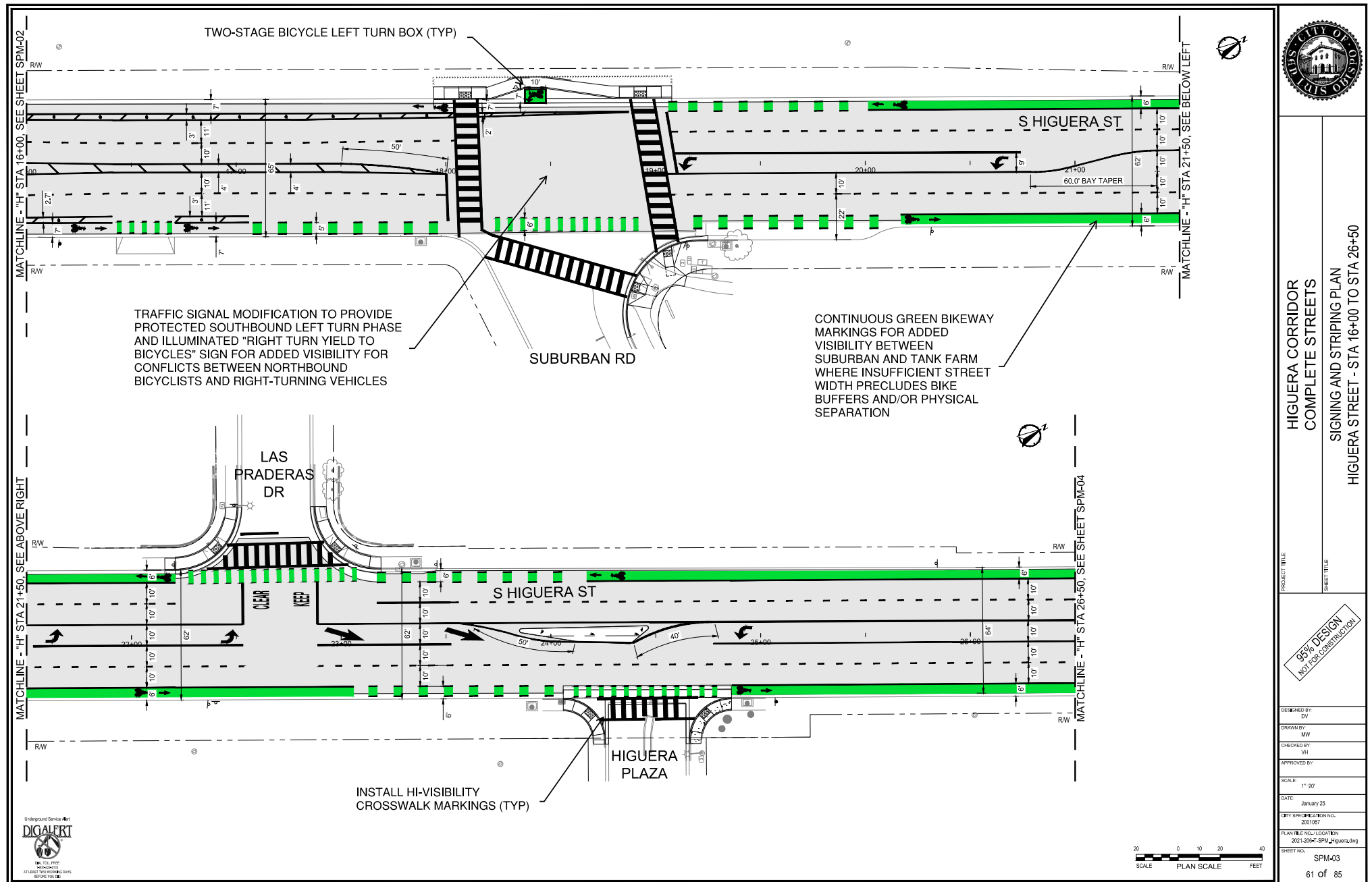
SIGNING AND STRIPING PLAN  
HIGUERA STREET - STA 5+03 TO STA 16+00

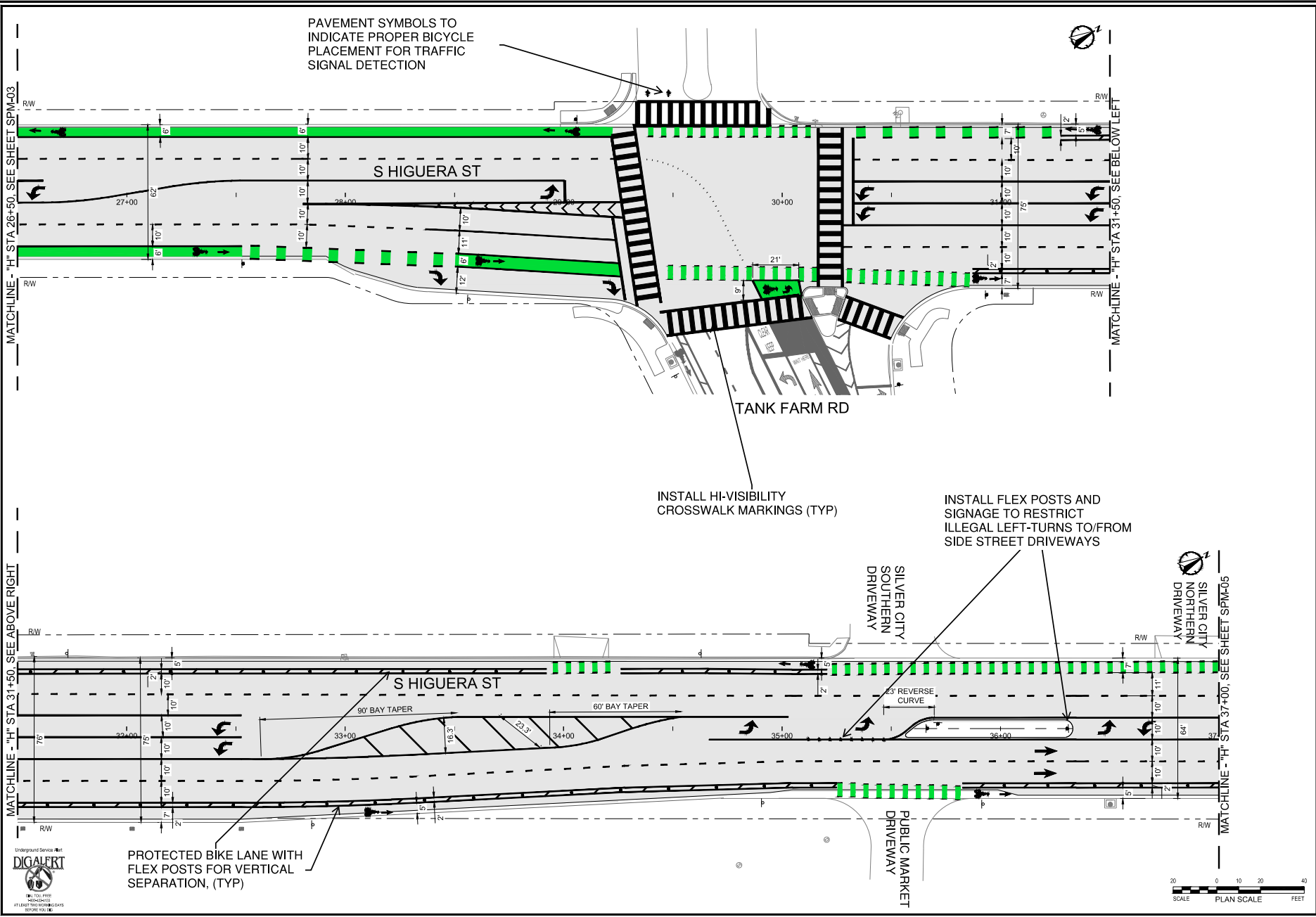
PROJECT TITLE

SHEET TITLE

DESIGNED BY: DV  
DRAWN BY: MW  
CHECKED BY: VH  
APPROVED BY:  
SCALE: 1"=20'  
DATE: January 25, 2021  
CITY SPECIFICATION NO.: 2001057  
PLAN FILE NO./LOCATION: 2021-2004-SPM\_Higuerita  
SHEET NO.: SPM-02  
60 of 85

95% DESIGN  
NOT FOR CONSTRUCTION





HIGUERA CORRIDOR  
COMPLETE STREETS

SIGNING AND STRIPING PLAN  
HIGUERA STREET - STA 26+50 TO STA 37+00

PROJECT TITLE

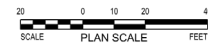
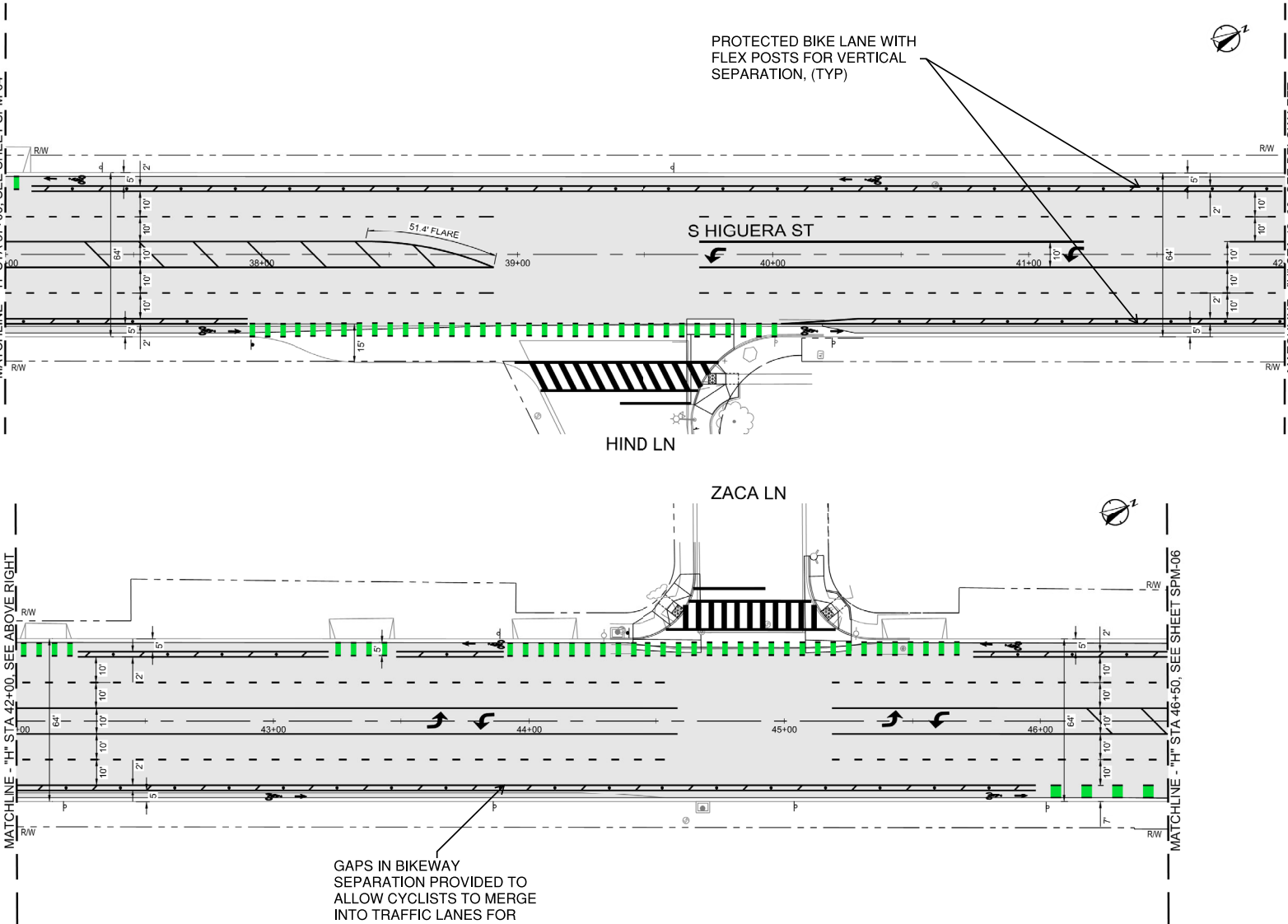
SHEET TITLE

95% DESIGN  
NOT FOR CONSTRUCTION

DESIGNED BY	DV
DRAWN BY	MW
CHECKED BY	VH
APPROVED BY	
SCALE	1"=20'
DATE	January 25, 2019
CITY SPECIFICATION NO.	2001957
PLAN FILE NO./LOCATION	2021-2004-SPM_Higuera
SHEET NO.	SPM-04

MATCHLINE - "H" STA 37+00, SEE SHEET SPM-04

MATCHLINE - "H" STA 42+00, SEE ABOVE RIGHT



HIGUERA CORRIDOR  
COMPLETE STREETS

SIGNING AND STRIPING PLAN  
HIGUERA STREET - STA 37+00 TO STA 46+50

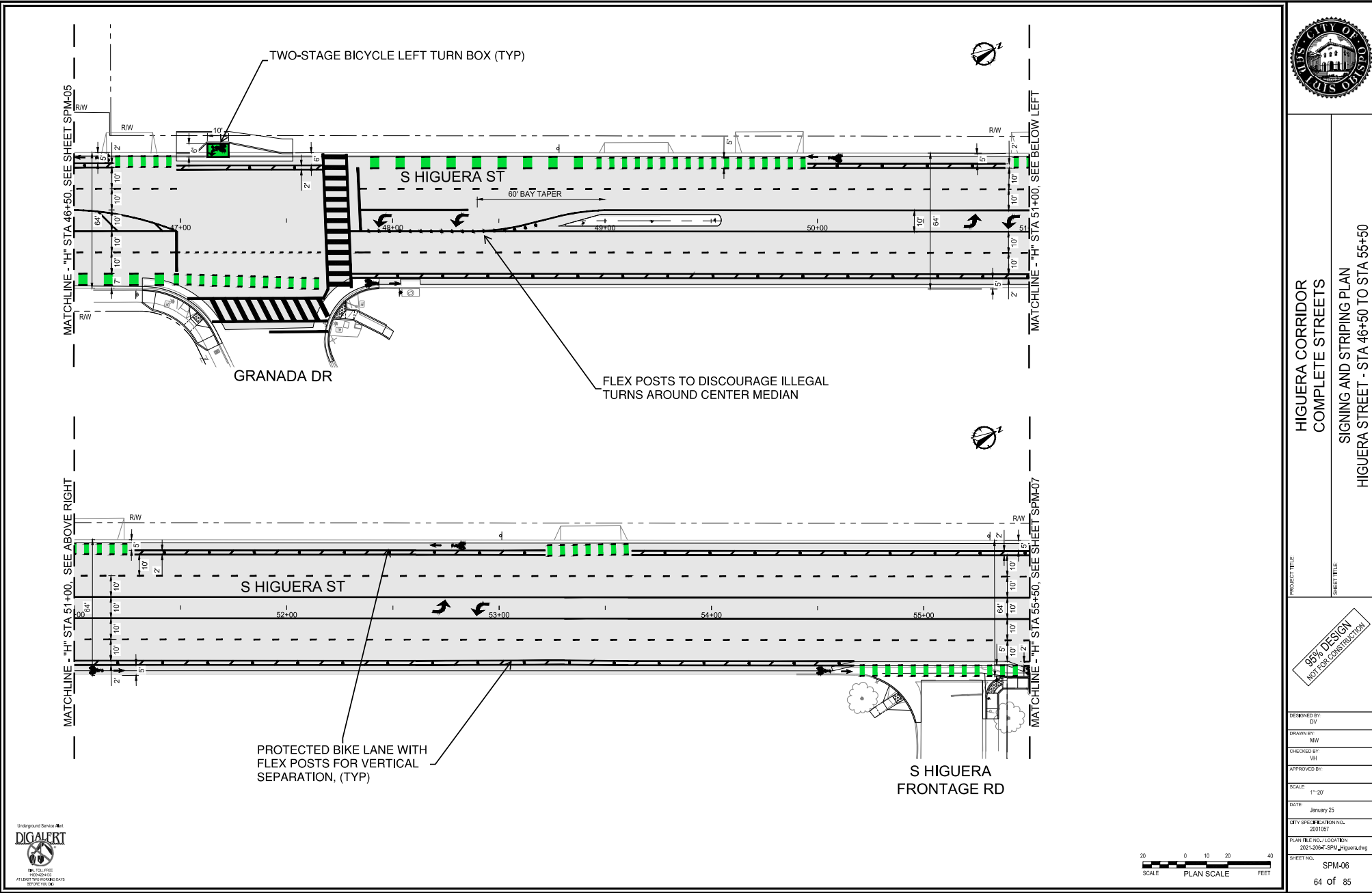
PROJECT TITLE

SHEET TITLE



DESIGNED BY:	DV
DRAWN BY:	MW
CHECKED BY:	VH
APPROVED BY:	
SCALE:	1"=20'
DATE:	January 25
CITY SPECIFICATION NO.:	2001687
PLAN FILE NO. / LOCATION:	2021-206-T-SPM_Higuera.dwg
SHEET NO.:	SPM-05
	63 of 85





**HIGUERA CORRIDOR  
COMPLETE STREETS**

**SIGNING AND STRIPING PLAN**

**HIGUERA STREET - STA 46+50 TO STA 55+50**

PROJECT TITLE

SHEET TITLE

**95% DESIGN**

NOT FOR CONSTRUCTION

DESIGNED BY	DV
DRAWN BY	MW
CHECKED BY	VH
APPROVED BY	
SCALE	1"=20'
DATE	January 25, 2021
CITY SPECIFICATION NO.	2001057
PLAN FILE NO./LOCATION	2021-2004-SPM-Higuera
SHEET NO.	SPM-06
	64 of 85





HIGUERA CORRIDOR  
COMPLETE STREETS

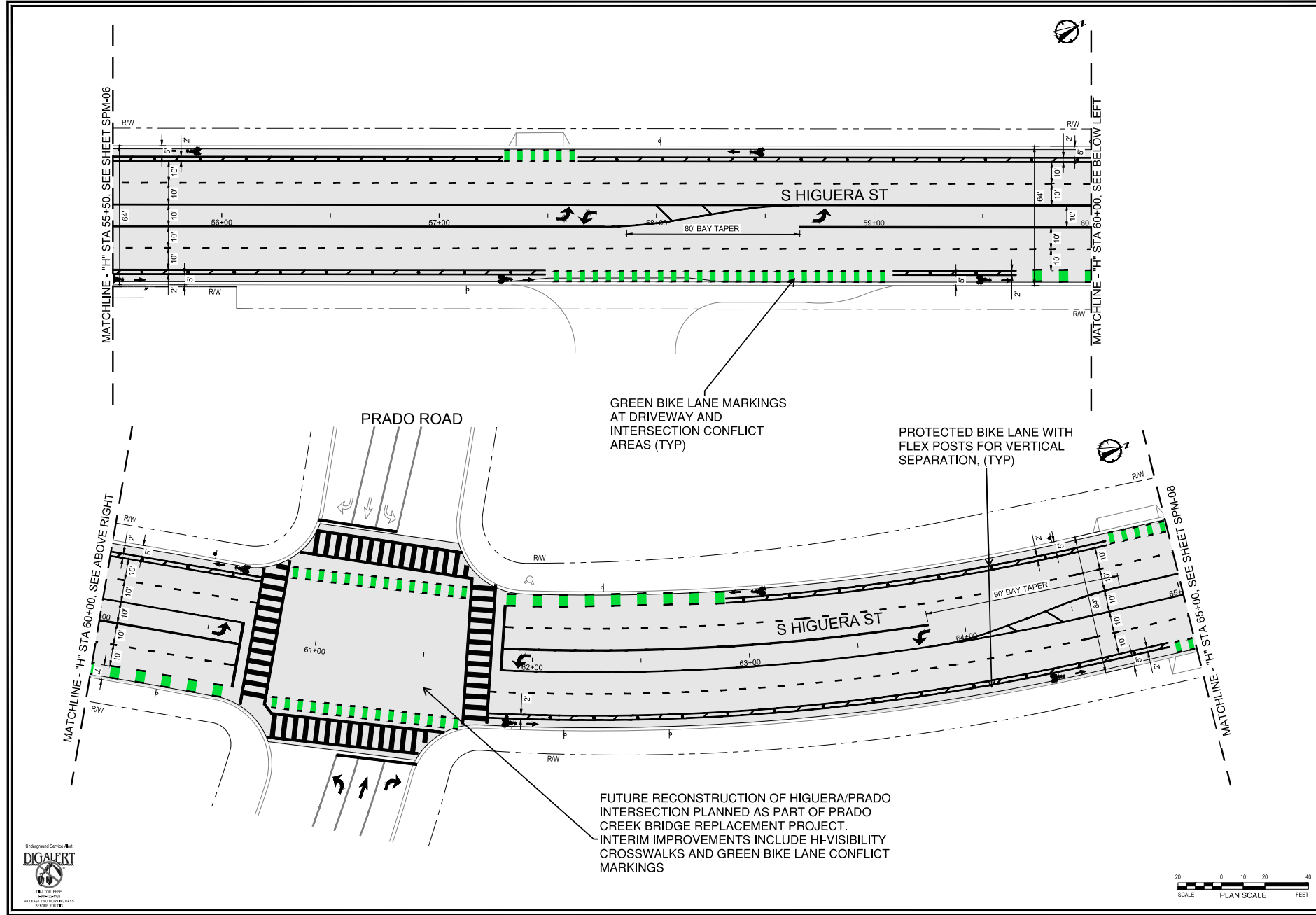
SIGNING AND STRIPING PLAN  
HIGUERA STREET - STA 55+50 TO STA 65+00

PROJECT TITLE

SHEET TITLE

95% DESIGN  
NOT FOR CONSTRUCTION

DESIGNED BY	DV
DRAWN BY	MW
CHECKED BY	VH
APPROVED BY	
SCALE	1"=20'
DATE	January 25, 2019
CITY SPECIFICATION NO.	2001057
PLAN FILE NO./LOCATION	2021-2004-SPM-Higuerfiling
SHEET NO.	SPM-07





HIGUERA CORRIDOR  
COMPLETE STREETS

SIGNING AND STRIPING PLAN

HIGUERA STREET - STA 65+00 TO STA 74+50

PROJECT TITLE

SHEET TITLE

95% DESIGN  
NOT FOR CONSTRUCTION

DESIGNED BY:  
DV

DRAWN BY:  
MW

CHECKED BY:  
VH

APPROVED BY:

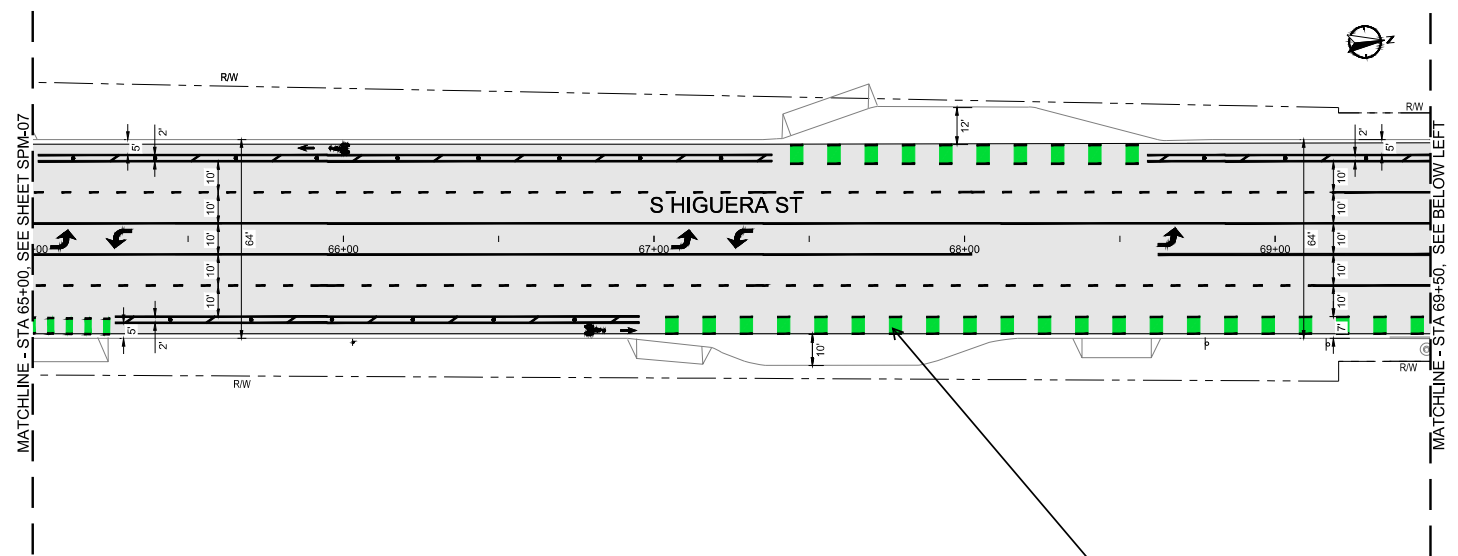
SCALE:  
1"=20'

DATE:  
January 25, 2021

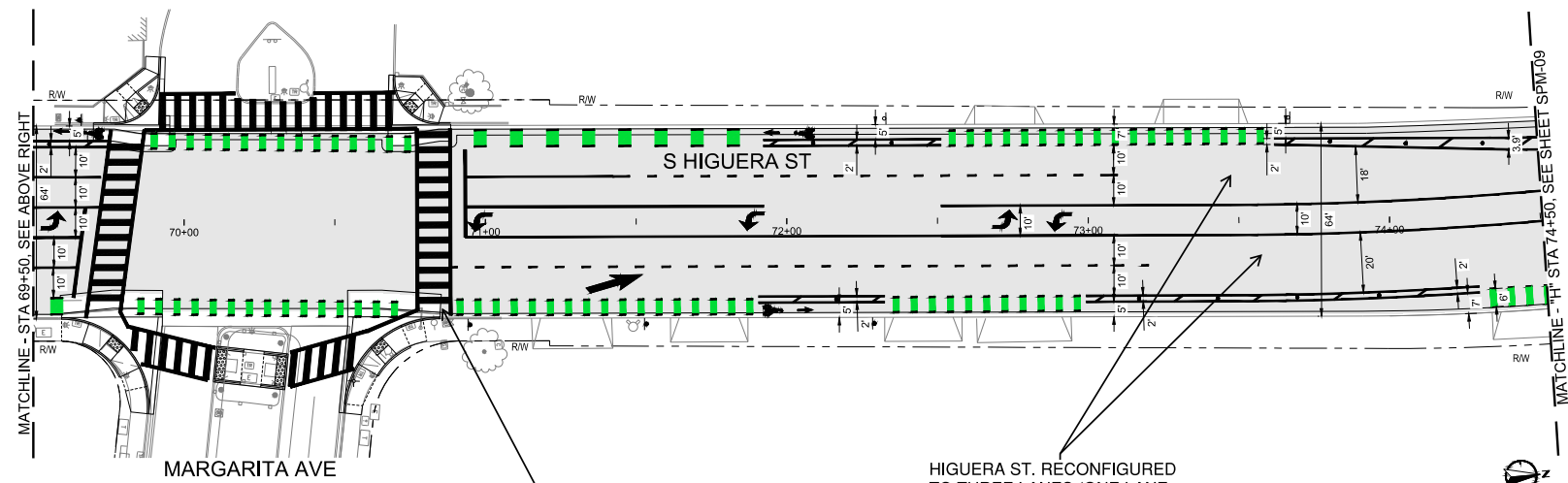
CITY SPECIFICATION NO.:  
2001057

PLAN FILE NO./LOCATION:  
2021-2004-SPM\_Higuerita

SHEET NO.:  
SPM-08



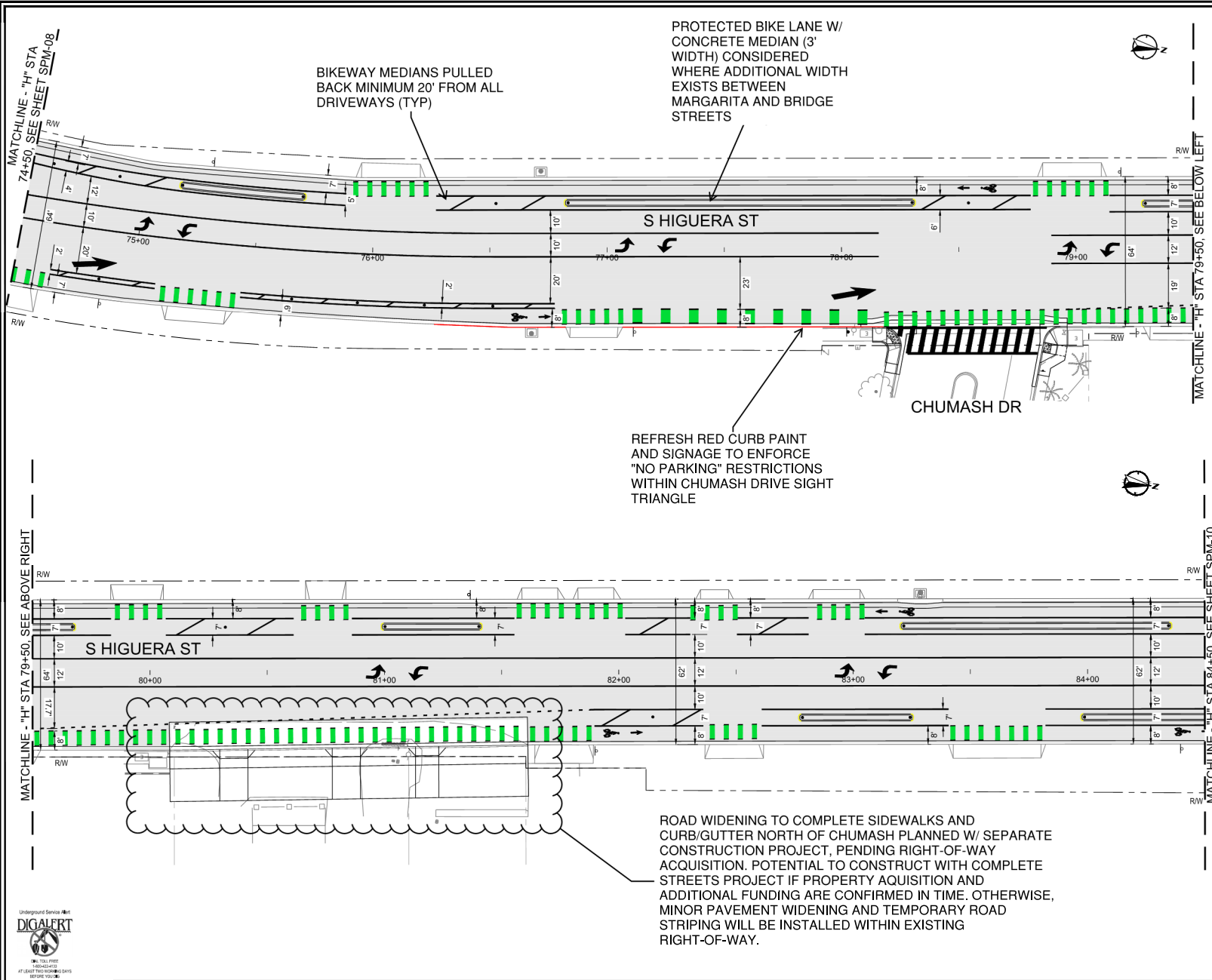
GREEN BIKE LANE MARKINGS  
AT BUS TURNOUTS (TYP)



HIGUERA ST. RECONFIGURED  
TO THREE LANES (ONE LANE  
EACH DIRECTION + CENTER  
TURN LANE) BETWEEN  
MARGARITA AND BRIDGE ST.

INSTALL HI-VISIBILITY  
CROSSWALK MARKINGS (TYP)





MATCHLINE - "H" STA 74+50, SEE SHEET SPM-08

MATCHLINE - "H" STA 79+50, SEE BELOW LEFT

MATCHLINE - "H" STA 79+50, SEE ABOVE RIGHT

MATCHLINE - "H" STA 84+50, SEE SHEET SPM-10



**HIGUERA CORRIDOR  
COMPLETE STREETS**

SIGNING AND STRIPING PLAN

HIGUERA STREET - STA 74+50 TO STA 84+50

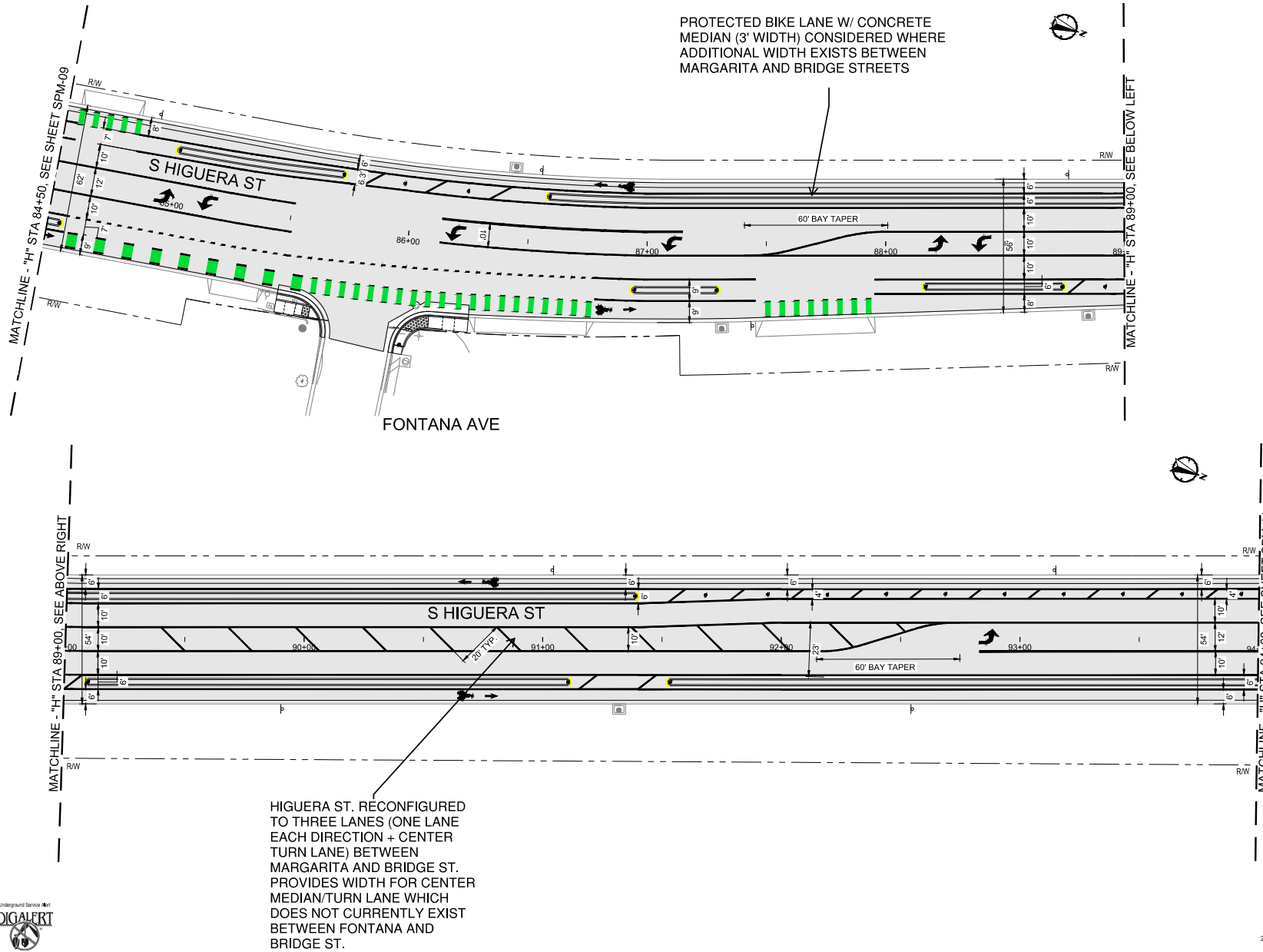
PROJECT TITLE

SHEET TITLE

DESIGNED BY: DV  
 DRAWN BY: MW  
 CHECKED BY: VH  
 APPROVED BY:  
 SCALE: 1"=20'  
 DATE: January 25, 2019  
 CITY SPECIFICATION NO.: 2001057  
 PLAN FILE NO./LOCATION: 2021-2004-SPM\_HiguerCorridor  
 SHEET NO.: SPM-09

95% DESIGN  
NOT FOR CONSTRUCTION

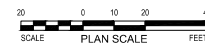
67 of 85



PROTECTED BIKE LANE W/ CONCRETE  
MEDIAN (3' WIDTH) CONSIDERED WHERE  
ADDITIONAL WIDTH EXISTS BETWEEN  
MARGARITA AND BRIDGE STREETS

FONTANA AVE

HIGUERA ST. RECONFIGURED  
TO THREE LANES (ONE LANE  
EACH DIRECTION + CENTER  
TURN LANE) BETWEEN  
MARGARITA AND BRIDGE ST.  
PROVIDES WIDTH FOR CENTER  
MEDIAN/TURN LANE WHICH  
DOES NOT CURRENTLY EXIST  
BETWEEN FONTANA AND  
BRIDGE ST.



HIGUERA CORRIDOR  
COMPLETE STREETS

SIGNING AND STRIPING PLAN

HIGUERA STREET - STA 84+50 TO STA 94+00

PROJECT TITLE

SHEET TITLE

95% DESIGN  
NOT FOR CONSTRUCTION

DESIGNED BY:  
DV  
DRAWN BY:  
MW  
CHECKED BY:  
VH  
APPROVED BY:

SCALE:  
1" = 20'  
DATE:  
January 25

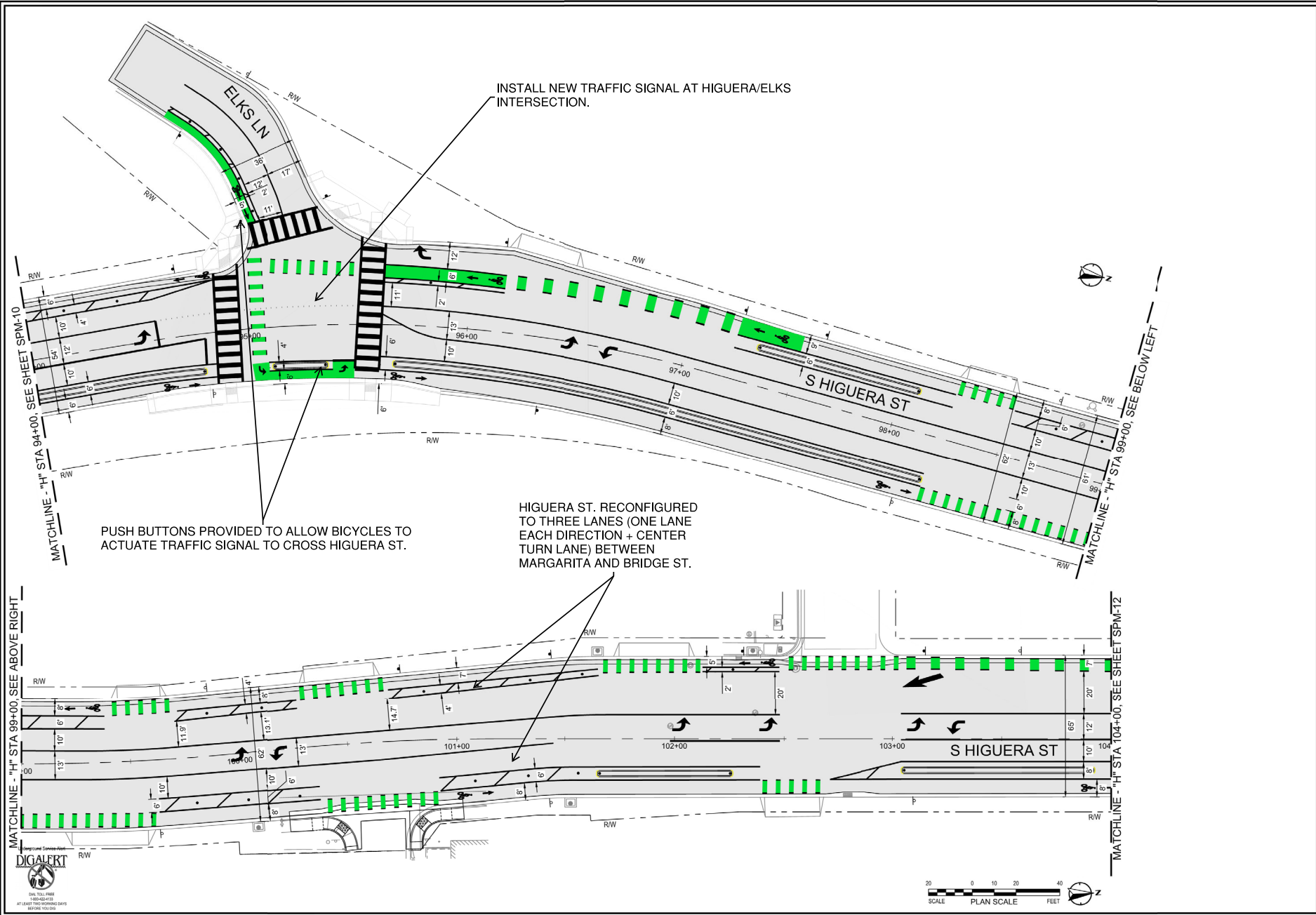
CITY SPECIFICATION NO.:  
2001057

PLAN FILE NO./LOCATION:  
2021-2004-SPM-Higuera/Fielding

SHEET NO.:  
SPM-10

68 of 85





**HIGUERA CORRIDOR  
COMPLETE STREETS**

SIGNING AND STRIPING PLAN

HIGUERA STREET - STA 94+00 TO STA 104+00

PROJECT TITLE

SHEET TITLE

95% DESIGN  
NOT FOR CONSTRUCTION

DESIGNED BY: DV

DRAWN BY: MW

CHECKED BY: VH

APPROVED BY:

SCALE: 1"=20'

DATE: January 25

CITY SPECIFICATION NO: 2001687

PLAN FILE NO. LOCATION: 2021-206-T-SPM\_Higuera.dwg

SHEET NO: SPM-11

69 of 85

PROTECTED BIKE LANE WITH FLEX POSTS FOR VERTICAL SEPARATION, (TYP)

CENTER TURN LANE ADDED TO IMPROVE ACCESS TO/FROM BRIDGE ST.

RECONSTRUCT NORTHWEST CORNER OF HIGUERA/MADONNA INTERSECTION TO IMPROVE BICYCLE AND PEDESTRIAN CROSSING EXPOSURE AND SAFETY.

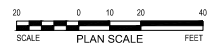
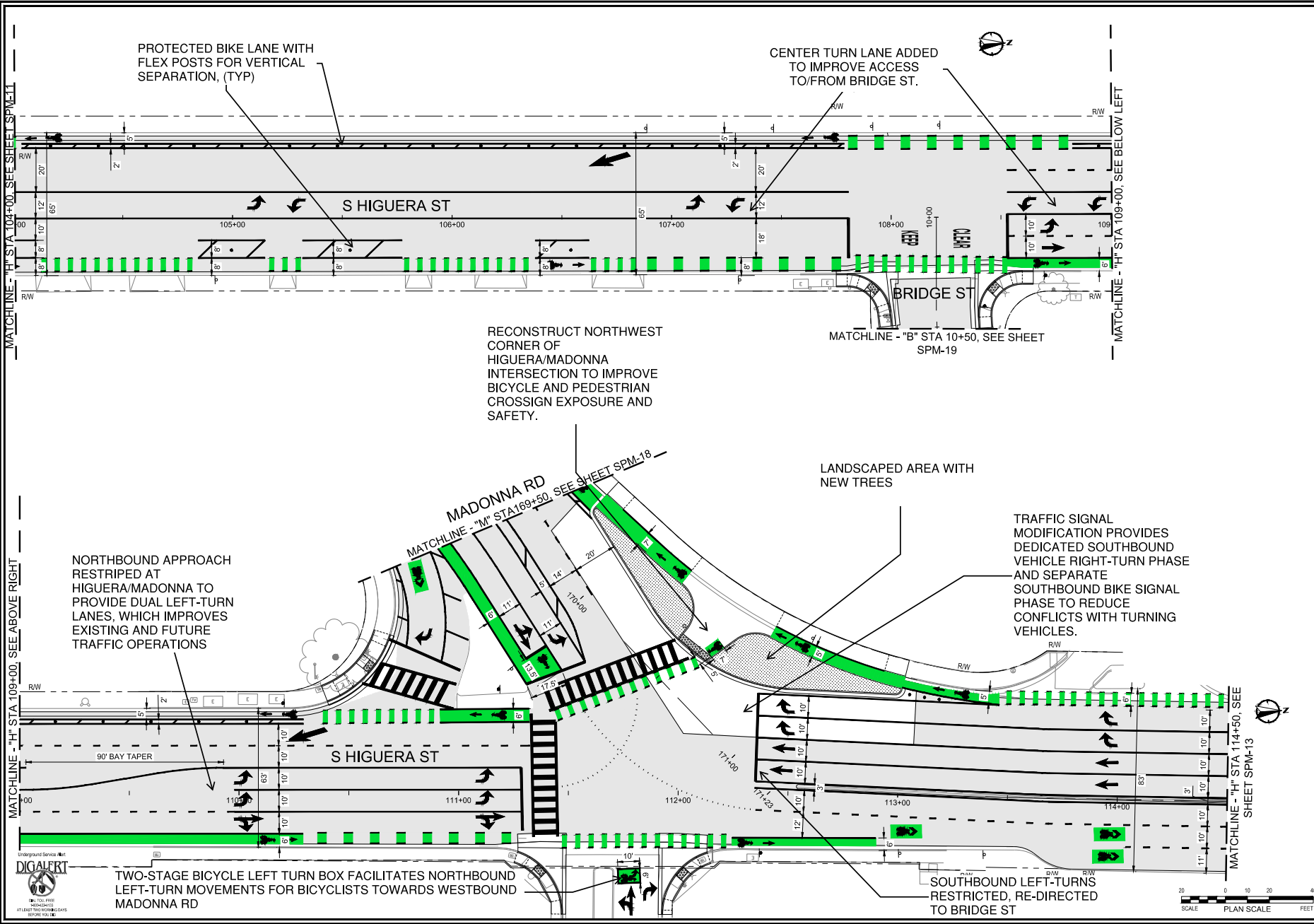
LANDSCAPED AREA WITH NEW TREES

TRAFFIC SIGNAL MODIFICATION PROVIDES DEDICATED SOUTHBOUND VEHICLE RIGHT-TURN PHASE AND SEPARATE SOUTHBOUND BIKE SIGNAL PHASE TO REDUCE CONFLICTS WITH TURNING VEHICLES.

NORTHBOUND APPROACH RESTRIPE AT HIGUERA/MADONNA TO PROVIDE DUAL LEFT-TURN LANES, WHICH IMPROVES EXISTING AND FUTURE TRAFFIC OPERATIONS

TWO-STAGE BICYCLE LEFT TURN BOX FACILITATES NORTHBOUND LEFT-TURN MOVEMENTS FOR BICYCLISTS TOWARDS WESTBOUND MADONNA RD

SOUTHBOUND LEFT-TURNS RESTRICTED, RE-DIRECTED TO BRIDGE ST



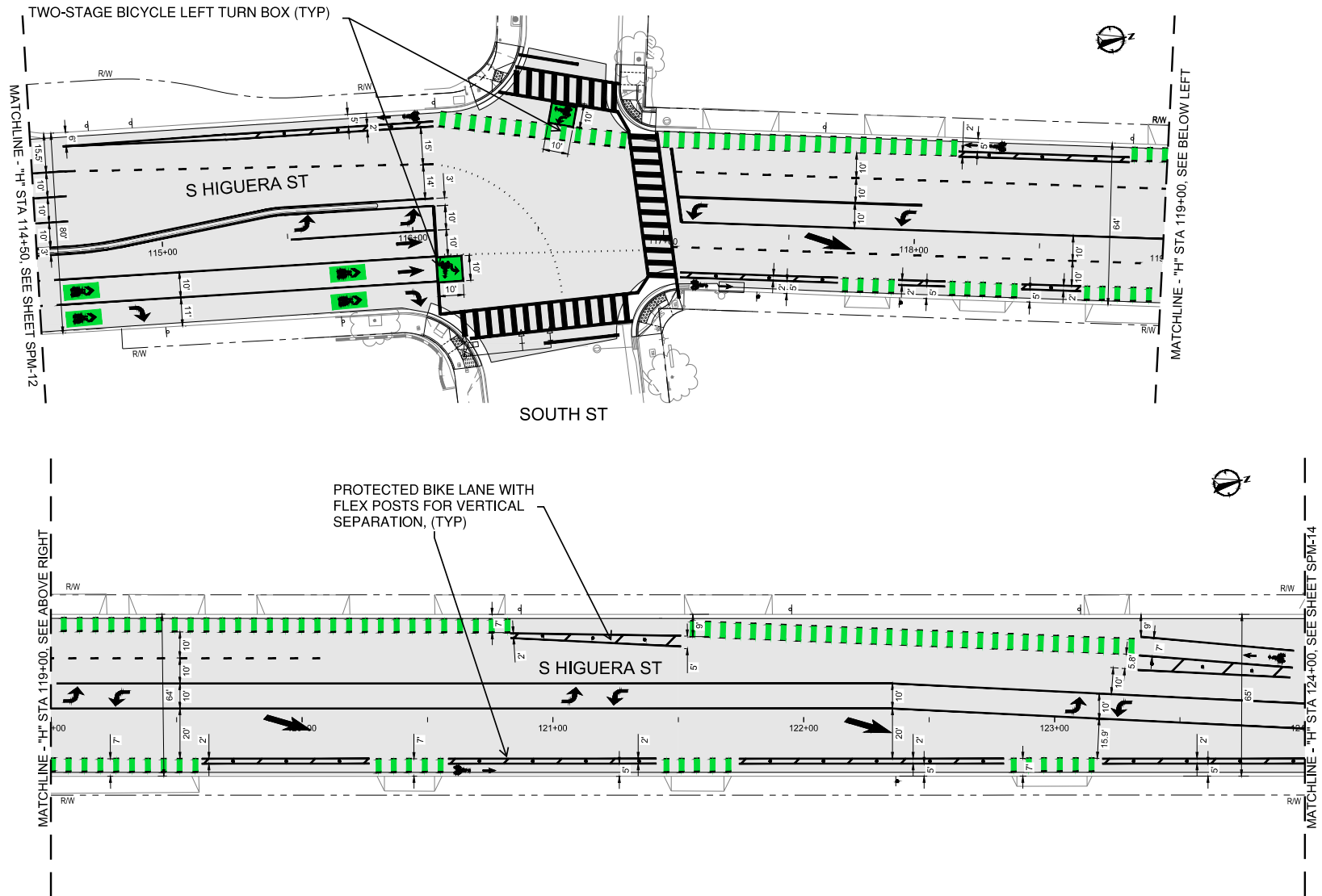
HIGUERA CORRIDOR  
COMPLETE STREETS  
SIGNING AND STRIPING PLAN  
HIGUERA STREET - STA 104+00 TO STA 114+50

PROJECT TITLE  
SHEET TITLE

95% DESIGN  
NOT FOR CONSTRUCTION

DESIGNED BY: DV  
DRAWN BY: MW  
CHECKED BY: VH  
APPROVED BY:  
SCALE: 1"=20'  
DATE: January 25, 2019  
CITY SPECIFICATION NO.: 2001057  
PLAN FILE NO./LOCATION: 2021-2004-SPM\_HigueraPlan  
SHEET NO.: SPM-12  
70 of 85





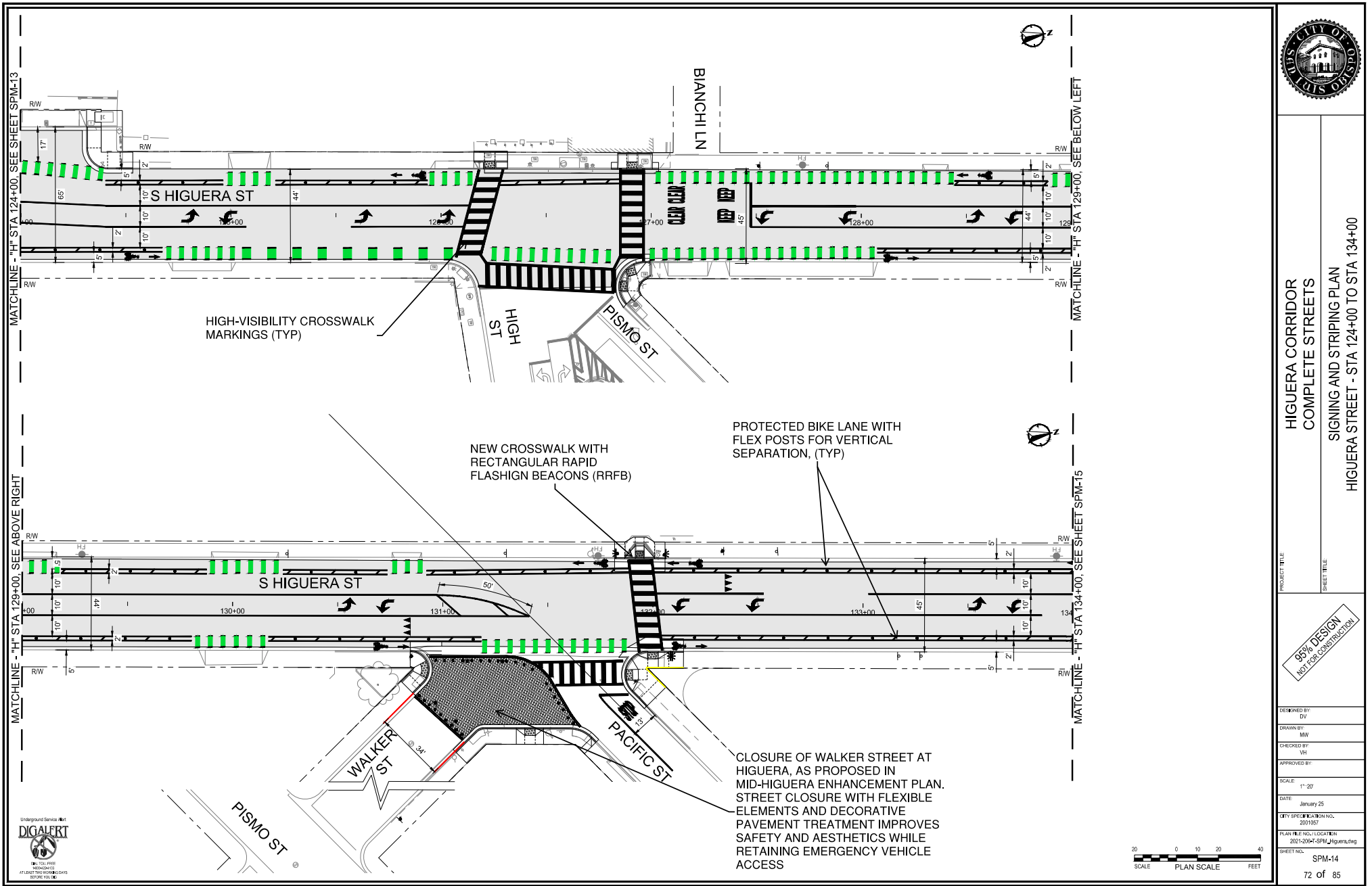
**HIGUERA CORRIDOR  
COMPLETE STREETS**

SIGNING AND STRIPING PLAN

HIGUERA STREET - STA 114+50 TO STA 124+00

PROJECT TITLE	HIGUERA CORRIDOR COMPLETE STREETS
SHEET TITLE	SIGNING AND STRIPING PLAN HIGUERA STREET - STA 114+50 TO STA 124+00
DESIGNED BY	DV
DRAWN BY	MW
CHECKED BY	VH
APPROVED BY	
SCALE	1" = 20'
DATE	January 25, 2021
CITY SPECIFICATION NO.	2001057
PLAN FILE NO./LOCATION	2021-2004-SPM_Higueras
SHEET NO.	SPM-13
	71 of 85

**95% DESIGN**  
NOT FOR CONSTRUCTION



**HIGUERA CORRIDOR  
COMPLETE STREETS**

SIGNING AND STRIPING PLAN

HIGUERA STREET - STA 124+00 TO STA 134+00

PROJECT TITLE

SHEET TITLE

**95% DESIGN**  
NOT FOR CONSTRUCTION

DESIGNED BY	DV
DRAWN BY	MW
CHECKED BY	VH
APPROVED BY	
SCALE	1"=20'
DATE	January 25, 2019
CITY SPECIFICATION NO.	2001057
PLAN FILE NO./LOCATION	2021-2004-SPM_Higuera
SHEET NO.	SPM-14
	72 of 85



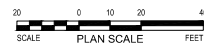
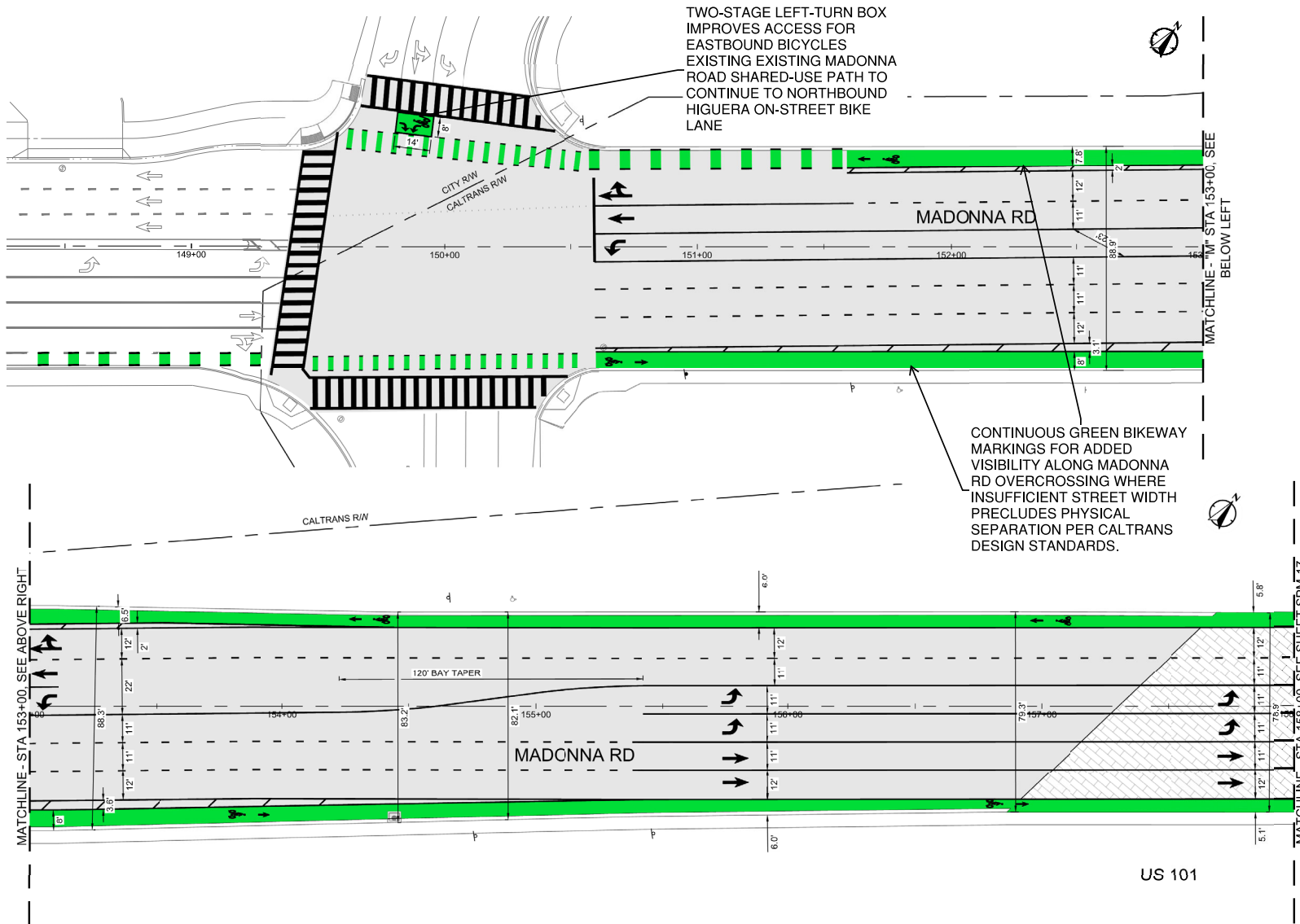
SIGNING AND STRIPING PLAN  
HIGUERA STREET - STA 134+00 TO STA 135+50

100

95% DESIGN  
NOT FOR CONSTRUCTION

SHEET NO.

73 of 85



**HIGUERA CORRIDOR  
COMPLETE STREETS**

**SIGNING AND STRIPING PLAN**

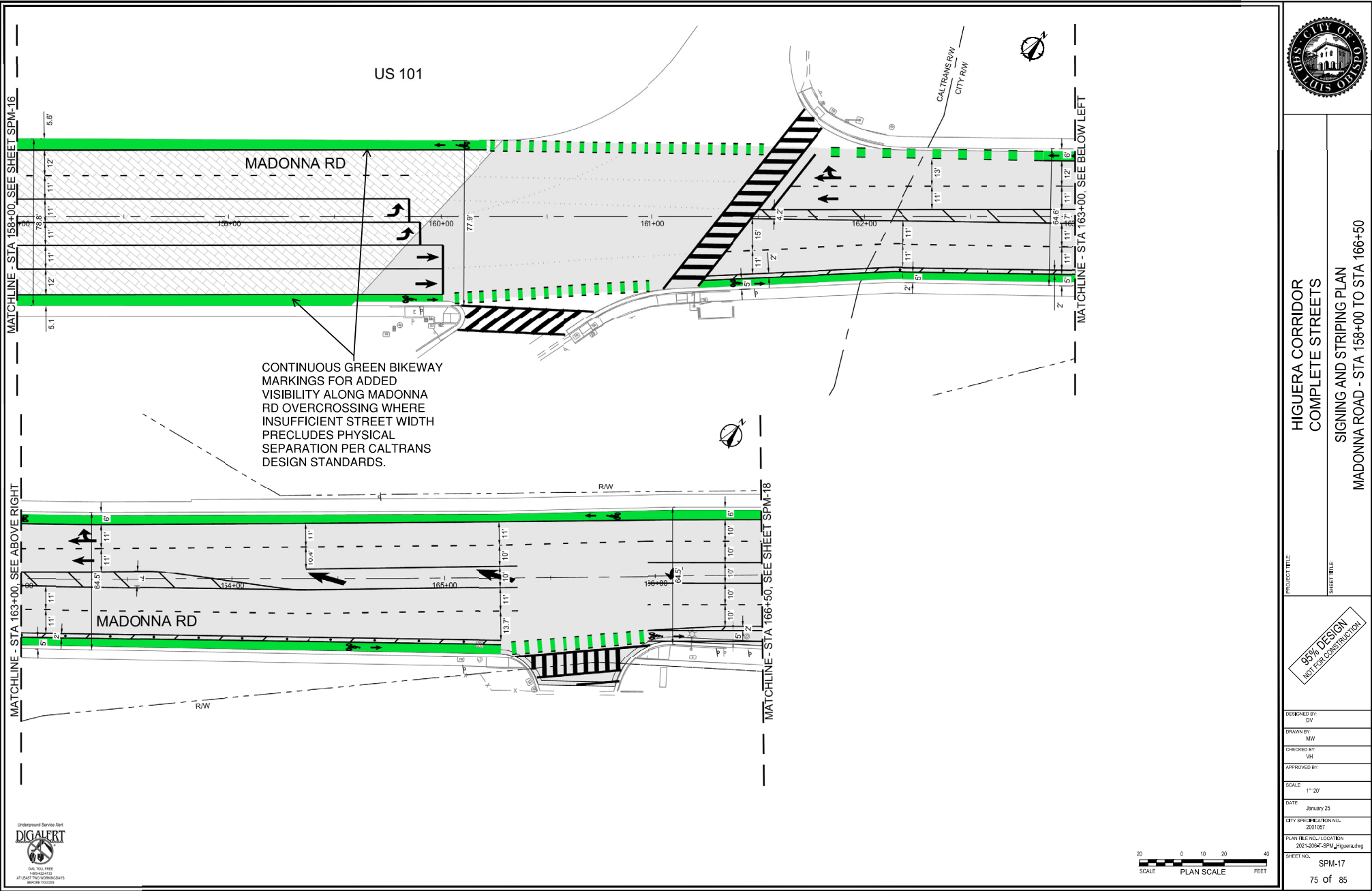
MADONNA ROAD - STA 148+32 TO STA 158+00

PROJECT TITLE

SHEET TITLE

**95% DESIGN**  
NOT FOR CONSTRUCTION

DESIGNED BY: DV  
DRAWN BY: MW  
CHECKED BY: VH  
APPROVED BY:  
SCALE: 1"=20'  
DATE: January 25, 2019  
CITY SPECIFICATION NO.: 2001057  
PLAN FILE NO./LOCATION: 2021-2004-SPM\_Higuerita  
SHEET NO.: SPM-16





MATCHLINE - "M" STA 169+50, SEE SHEET SPM-12



SHEET TYPE:

CDM 19

76 of 85





Underground Service Unit  
DIGAULT  
ATTENTION: NO WORKING DAYS  
BEFORE YOU GO

MATCH LINE - "B" STA 14+00, SEE ABOVE RIGHT

MATCH LINE - "B" STA 10+50, SEE SHEET SPM-11

NEIGHBORHOOD GREENWAY  
PAVEMENT LEGENDS AND  
GUIDE SIGNAGE (TYP)



BRIDGE ST

RED CURB PAINT TO  
RESTRICT PARKING  
WITHIN INTERSECTION  
SIGHT TRIANGLES (TYP)

BEEBEE ST

BRIDGE ST

GREEN  
WAY

MATCH LINE - "B" STA 18+50, SEE SHEET SPM-20

20 0 10 20 40  
SCALE PLAN SCALE FEET



HIGUERA CORRIDOR  
COMPLETE STREETS

SIGNING AND STRIPING PLAN  
BRIDGE STREET - STA 10+50 TO STA 18+50

PROJECT TITLE

SHEET TITLE

95% DESIGN  
NOT FOR CONSTRUCTION

DESIGNED BY  
VH

DRAWN BY  
JP

CHECKED BY  
JG

APPROVED BY

SCALE  
1" = 20'

DATE  
January 25

CITY SPECIFICATION NO.  
2001057

PLAN FILE NO./LOCATION  
2021-2024-SPM\_Greenway.dwg

SHEET NO.

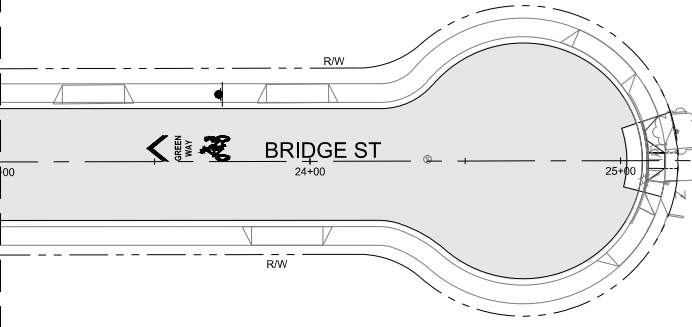
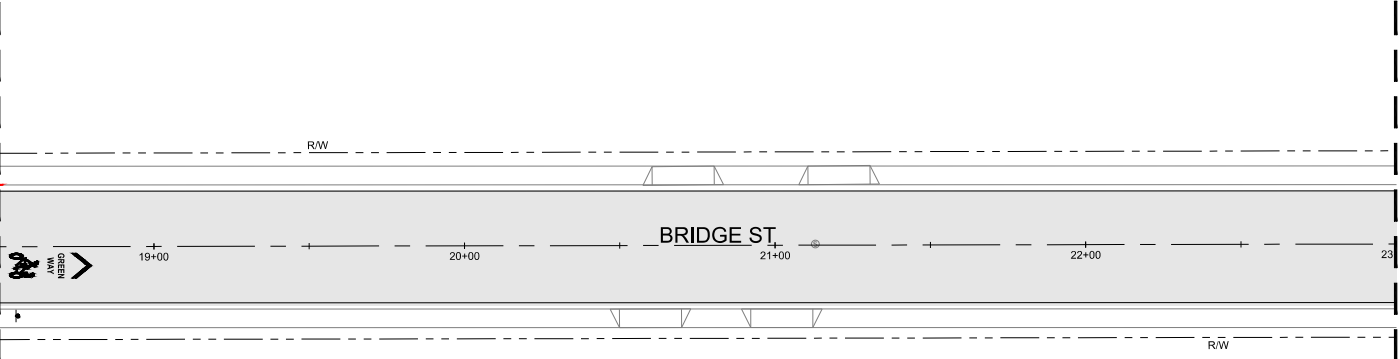
SPM-19

77 of 85



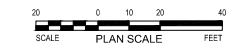
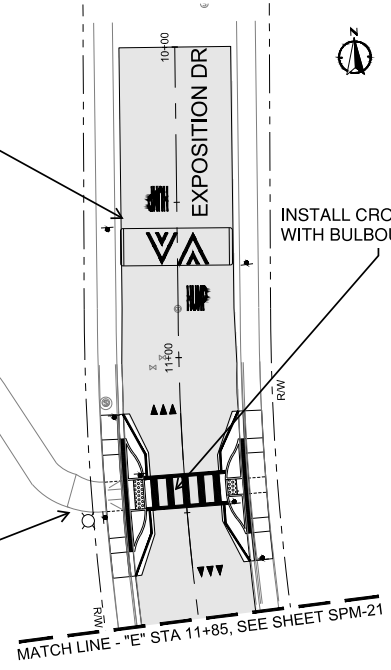
MATCH LINE - "B" STA 18+50, SEE SHEET L-09

MATCH LINE - "B" STA 23+00, SEE ABOVE RIGHT



INSTALL LIGHTING ALONG SHARED-USE PATH CONNECTING BRIDGE ST AND EXPOSITION DR.

INSTALL SPEED HUMP



HIGUERA CORRIDOR  
COMPLETE STREETS

SIGNING AND STRIPING PLAN  
BRIDGE STREET - STA 18+50 TO STA 23+50  
EXPOSITION DRIVE - STA 10+00 TO STA 11+85

PROJECT TITLE

SHEET TITLE

95% DESIGN  
NOT FOR CONSTRUCTION

DESIGNED BY: VH  
DRAWN BY: JP  
CHECKED BY: JG  
APPROVED BY:

SCALE: 1"=20'  
DATE: January 25, 2021

CITY SPECIFICATION NO.: 2001057  
PLAN FILE NO./LOCATION: 2021-2004-SPM\_Corridorway.dwg

SHEET NO.: SPM-20  
78 of 85



**HIGUERA CORRIDOR  
COMPLETE STREETS**

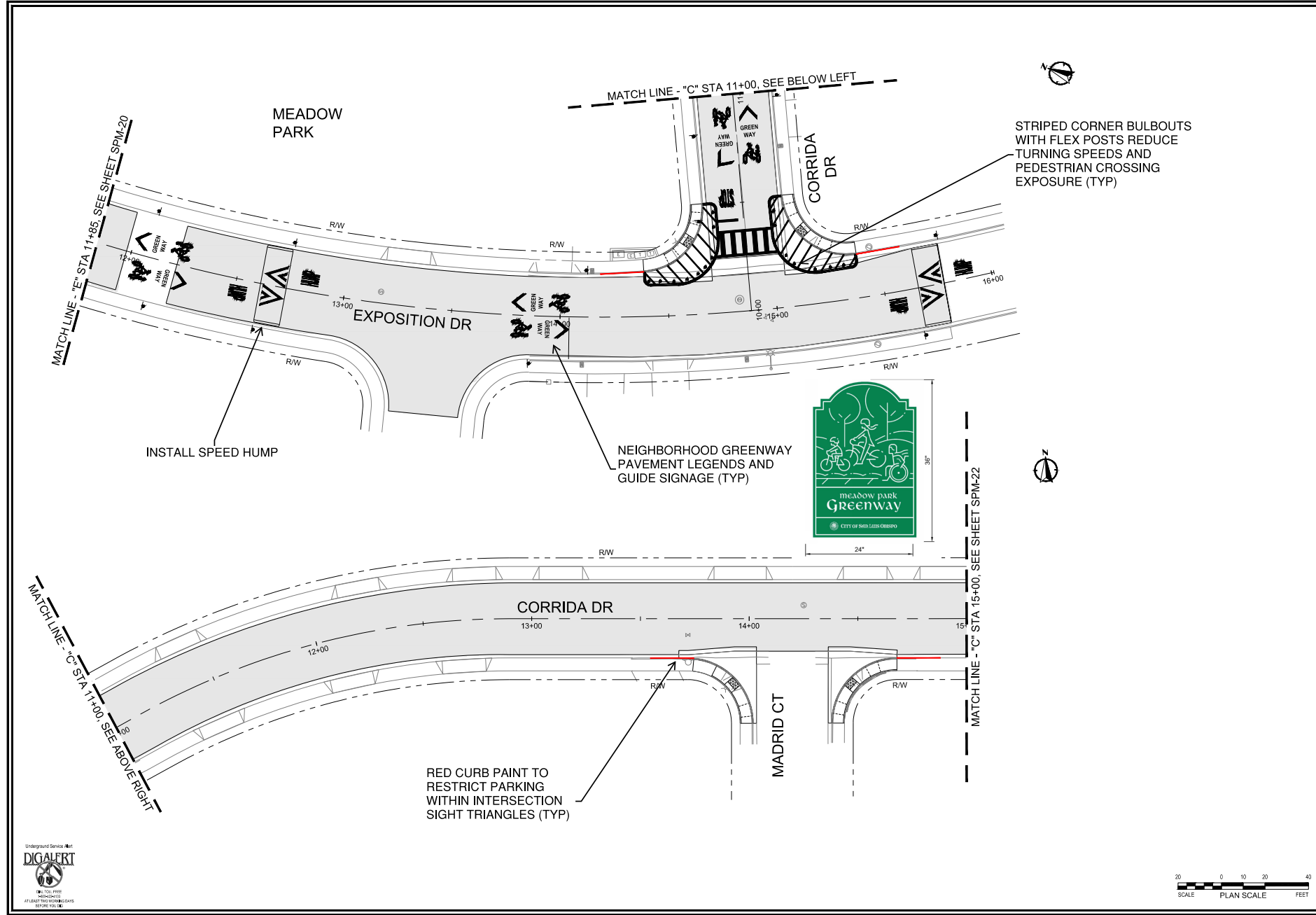
SIGNING AND STRIPING PLAN  
EXPOSITION DRIVE - STA 11+85 TO STA 15+91  
CORRIDA DRIVE - STA 11+00 TO STA 15+00

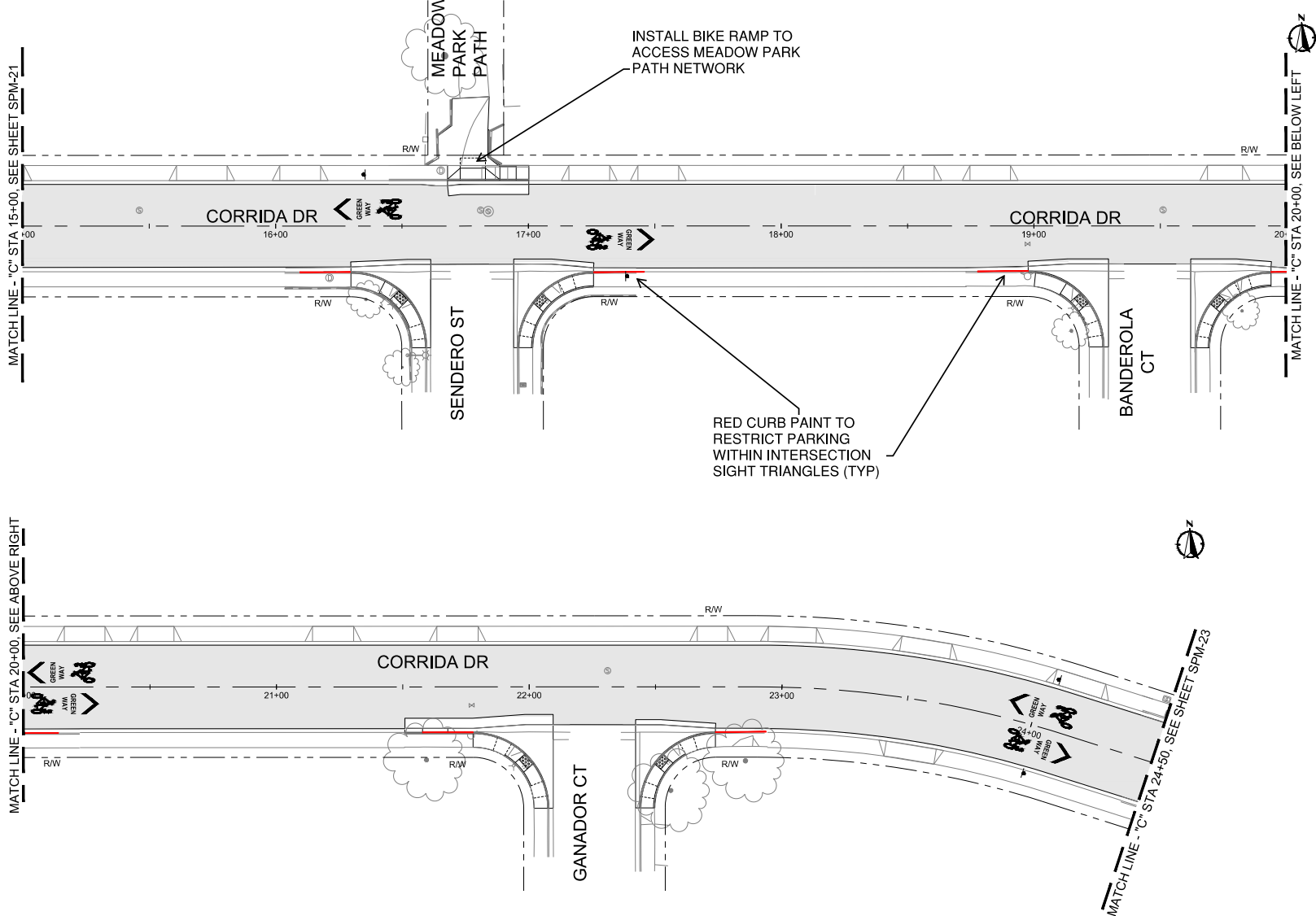
PROJECT TITLE

SHEET TITLE

**95% DESIGN**  
NOT FOR CONSTRUCTION

DESIGNED BY:	VH
DRAWN BY:	JP
CHECKED BY:	JG
APPROVED BY:	
SCALE:	1" = 20'
DATE:	January 25
CITY SPECIFICATION NO.:	2001057
PLAN FILE NO. / LOCATION:	2021-20X-SPM_Corridorway.dwg
SHEET NO.:	SPM-21





MATCH LINE - "C" STA 15+00, SEE SHEET SPM-21

MATCH LINE - "C" STA 20+00, SEE ABOVE RIGHT

MATCH LINE - "C" STA 20+00, SEE BELOW LEFT

MATCH LINE - "C" STA 24+50, SEE SHEET SPM-23



**HIGUERA CORRIDOR  
COMPLETE STREETS**

SIGNING AND STRIPING PLAN  
CORRIDA DRIVE - STA 15+00 TO STA 24+50

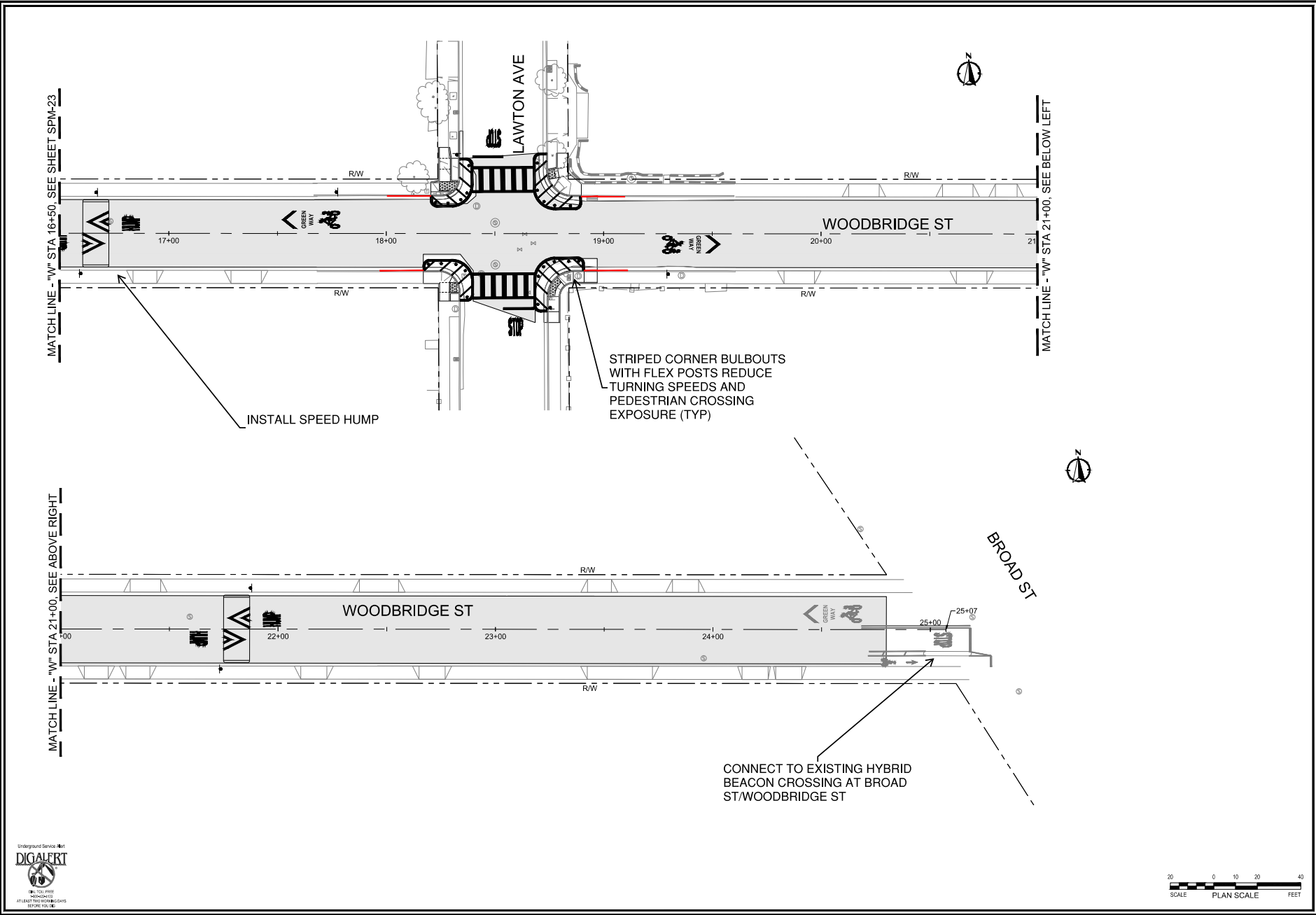
PROJECT TITLE

SHEET TITLE

**95% DESIGN**  
NOT FOR CONSTRUCTION

DESIGNED BY:	VH
DRAWN BY:	JP
CHECKED BY:	JG
APPROVED BY:	
SCALE:	1" = 20'
DATE:	January 25, 2021
CITY SPECIFICATION NO.:	2021057
PLAN FILE NO./LOCATION:	2021-2004-SPM_CorridaWay.dwg
SHEET NO.:	SPM-22







**HIGUERA CORRIDOR  
COMPLETE STREETS  
SIGNING AND STRIPING PLAN**

WOODBRIDGE STREET - STA 16+50 TO STA 22+00

PROJECT TITLE

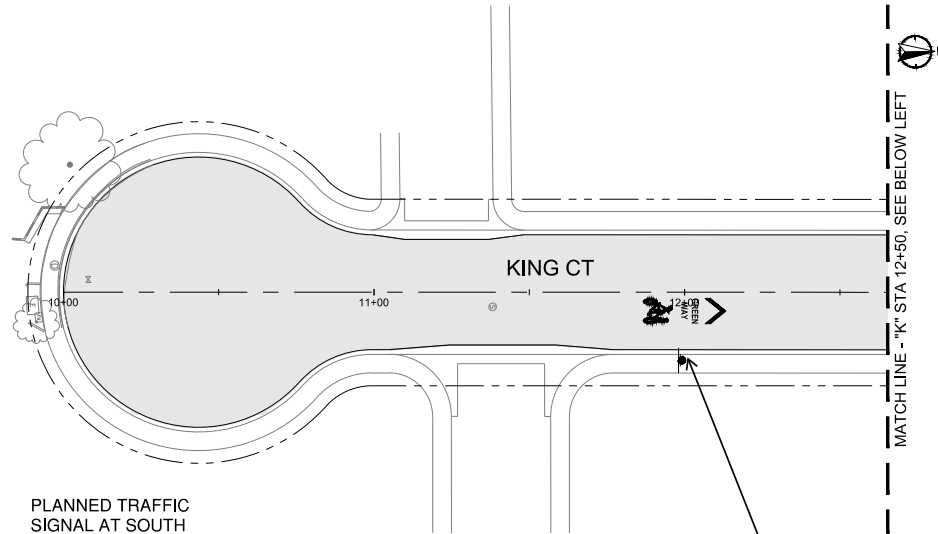
SHEET TITLE

**95% DESIGN**  
NOT FOR CONSTRUCTION

DESIGNED BY:	VH
DRAWN BY:	JP
CHECKED BY:	JG
APPROVED BY:	
SCALE:	1"=20'
DATE:	January 25, 2019
CITY SPECIFICATION NO.:	2001657
PLAN FILE NO. / LOCATION:	2021-2024-SPM_Corridorway.dwg
SHEET NO.:	SPM-24
	82 of 85



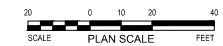
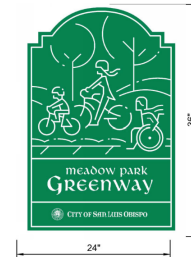
MEADOW  
PARK



PLANNED TRAFFIC  
SIGNAL AT SOUTH  
ST/KING ST  
INTERSECTION TO BE  
CONSTRUCTED VIA  
SEPARATE PROJECT  
PRIOR TO COMPLETE  
STREET PROJECT

SOUTH ST

NEIGHBORHOOD GREENWAY  
PAVEMENT LEGENDS AND  
GUIDE SIGNAGE (TYP)



MATCH LINE - "K" STA 12+50. SEE ABOVE RIGHT

MATCH LINE - "K" STA 12+50. SEE ABOVE RIGHT

INSTALL SPEED HUMP

INSTALL SPEED HUMP



HIGUERA CORRIDOR  
COMPLETE STREETS

SIGNING AND STRIPING PLAN  
KING COURT - STA 12+00 TO STA 15+00

PROJECT TITLE

SHEET TITLE

DESIGNED BY  
VH  
DRAWN BY  
JP  
CHECKED BY  
JG  
APPROVED BY  
DATE  
April 25  
CITY SPECIFICATION NO.  
2001607  
PLAN FILE NO./LOCATION  
2021-2024-SPM\_Greenway.dwg  
SHEET NO.  
SPM-25  
83 of 85

95% DESIGN  
NOT FOR CONSTRUCTION