

general notes

1. IT SHALL BE THE RESPONSIBILITY OF THE CONTRACTOR OR PERMITTEE TO CONTACT "UNDERGROUND SERVICE ALERT OF NORTHERN CALIFORNIA" BY PHONE AT 8-1-1 FORTY- EIGHT (48) HOURS PRIOR TO START OF CONSTRUCTION FOR LOCATION OF POWER, TELEPHONE, OIL AND NATURAL GAS UNDERGROUND FACILITIES. CONTRACTOR OR PERMITTEE SHALL ALSO CONTACT THE APPROPRIATE AGENCY FOR THE LOCATION OF CABLE T.V., WATER, SEWER, DRAINAGE OR UNDERGROUND FACILITIES.
2. THE CONTRACTOR SHALL POSSESS A CLASS "A" LICENSE AT THE TIME OF BID OPENING.
3. CONTRACTOR SHALL VERIFY DEPTH, LOCATION, SIZE AND MATERIAL OF PIPE AT ALL TIE-INS AND CROSSINGS PRIOR TO LAYING PIPE. ALIGNMENTS AND GRADES SHALL BE ADJUSTED AS NEEDED BASED ON THE FINDINGS. CONTRACTOR SHALL PROVIDE ALL THE NECESSARY PIPE, FITTINGS, AND ADAPTERS AS NEEDED TO ACCOMPLISH THE PIPE RUNS.
4. CONTRACTOR TO PROCEED WITH CAUTION WHEN TRENCHING AND SHALL HAVE ALL NECESSARY MATERIALS ON HAND TO REPAIR EXISTING UTILITY LINES IF DAMAGED. CONTRACTOR SHALL FIELD VERIFY DEPTHS OF PROPOSED PIPE RUNS TO AVOID CROSSING CONFLICTS.
5. THE CONTRACTOR MUST PROVIDE SHORING AS NECESSARY TO PREVENT MOVEMENT OF THE EXISTING UTILITIES. ANY MATERIAL THAT FALLS INTO THE TRENCH FROM THE SURROUNDING AREA SHALL BE REPLACED AT THE CONTRACTOR'S EXPENSE.
4. THE OUT CENTERLINE MONUMENTS BEFORE WORK AND REPLACE IF DISTURBED IN ACCORDANCE WITH THE LAND SURVEYORS ACT, AND SECTION 5-1.36E, REPLACE MONUMENT AND WELL PER ENG. STD. 9020.
5. THE CONTRACTOR MUST REPLACE ALL PAVEMENT STRIPES, MARKINGS, AND MARKERS DISTURBED DURING CONSTRUCTION. ALL PAVEMENT STRIPES AND MARKINGS WITHIN 5 FEET OF THE DISTURBED AREA MUST BE REPLACED. ALL STRIPING IS PER STATE STANDARD PLANS AND PER PER ENGINEERING STANDARD SPECIFICATION 84-1.01A.
6. PIPE MUST BE INSTALLED IN COMPLIANCE WITH ENG. STD. 6020. WITH THE APPROVAL OF THE ENGINEER. PIPE MAY BE INSTALLED WITH LESS THAN 3 FEET OF COVER AND MUST BE INSTALLED WITH SLURRY TRENCH BACKFILL IN COMPLIANCE WITH ENG. STD. 6020.
7. ALL PIPE LENGTHS ARE APPROXIMATE. THE CONTRACTOR IS RESPONSIBLE FOR VERIFYING ALL PIPE LENGTHS.
8. SEWER MAIN WITH LESS THAN 1% SLOPE MUST BE INSTALLED WITH FLOAT ROCK AS BEDDING AND INITIAL BACKFILL. SEE ENG. STD. 6020, NOTE 10 FOR ADDITIONAL REQUIREMENTS.
9. ALL PVC AND HDPE PIPE CONNECTIONS MUST BE MADE WITH POLY-CAM SERIES 731 COUPLINGS OR APPROVED EQUAL.
10. APPROXIMATE LOCATION OF LATERALS ARE SHOWN ON PLANS. LOCATING LATERALS IS THE RESPONSIBILITY OF THE CONTRACTOR AND ANY DAMAGE TO A LATERAL MUST BE REPAIRED IMMEDIATELY AND AT NO COST TO THE CITY.
11. NOT ALL IMPROVEMENTS WITHIN PRIVATE PROPERTIES ARE SHOWN. UPON COMPLETION OF WORK WITHIN PRIVATE PROPERTIES, THE CONTRACTOR MUST RESTORE PRIVATE PROPERTY IMPROVEMENTS TO THE SAME CONDITION BEFORE THE START OF CONSTRUCTION.
12. ALL IMPROVEMENTS WITHIN CALTRANS RIGHT OF WAY MUST COMPLY WITH THE REQUIREMENTS OF THE ENCROACHMENT PERMITS SET IN PLACE FOR THESE PUBLIC IMPROVEMENTS.

legend

| | |
|-----|--|
| # | Detail Number |
| # | Sheet Number |
| (E) | Survey Monument - Protect in place |
| (E) | Survey Monument - Replace if damaged or destroyed. |

| | |
|-----|--------------------------------|
| --- | RIGHT OF WAY LINE |
| --- | CENTER LINE |
| --- | UNDERGROUND ELECTRICAL LINE |
| --- | UNDERGROUND FIBER OPTIC LINE |
| --- | GAS LINE |
| --- | OIL LINE |
| --- | STORM DRAIN LINE |
| --- | SANITARY SEWER LINE |
| --- | UNDERGROUND COMMUNICATION LINE |
| --- | WATER LINE |
| --- | TELEVISION LINE |

| | | | |
|---|-----------------------------|---|--------------------------|
| ⊗ | WATER MANHOLE | ⊗ | TELECOMMUNICATIONS VAULT |
| ⊙ | ELECTRICAL MANHOLE | ⊙ | ELECTRICAL VAULT |
| ⊕ | STORM DRAIN MANHOLE | ⊕ | UNKNOWN UTILITY VAULT |
| ⊖ | SANITARY SEWER MANHOLE | ⊖ | ELECTRIC METER |
| ⊗ | TELECOMMUNICATIONS MANHOLE | ⊗ | GAS METER |
| ⊙ | UNKNOWN MANHOLE | ⊙ | WATER METER |
| ⊕ | TELECOMMUNICATIONS BOX | ⊕ | UNKNOWN METER |
| ⊖ | ELECTRICAL BOX | ⊖ | GAS VALVE |
| ⊗ | STREET LIGHT BOX | ⊗ | AIR RELEASE VALVE |
| ⊙ | TRAFFIC SIGNAL BOX | ⊙ | IRRIGATION CONTROL VALVE |
| ⊕ | GAS BOX | ⊕ | RECLAIMED WATER VALVE |
| ⊖ | TELECOMMUNICATIONS PEDESTAL | ⊖ | WATER VALVE |
| ⊗ | ELECTRICAL PEDESTAL | ⊗ | FIRE WATER VALVE |
| ⊙ | | ⊙ | UNKNOWN VALVE |

abbreviations

| | | | | | |
|------|-----------------------|------|--------------------|-----|--------------------|
| AC | ASPHALTIC CONCRETE | DR | DRIVE | (N) | NEW |
| ACB | AC BERM | (EX) | EXISTING | N&T | NAIL AND TIN |
| ATT | AT&T PHONE/CABLE | ELE | ELECTRIC | OD | OUTSIDE DIAMETER |
| BM | BENCHMARK | ELEV | ELEVATION | PP | POWER POLE |
| CB | CATCH BASIN | ESMT | EASEMENT | RD | ROAD |
| CDH | CURB DRAIN HOLE | FH | FIRE HYDRANT | SD | STORM DRAIN |
| CF | CURB FACE | FO | FIBER OPTIC | SL | STREET LIGHT |
| CIP | CAST IRON PIPE | GAS | NATURAL GAS | SS | SANITARY SEWER |
| CMP | CORRUGATED METAL PIPE | LAT | LATERAL | ST | STREET |
| CONC | CONCRETE | LB | LIGHT BOX | TS | TRAFFIC SIGNAL |
| CT | CALTRANS | LP | LIGHT POLE | TSB | TRAFFIC SIGNAL BOX |
| CULV | CULVERT | LS | LANDSCAPE | TFC | TRAFFIC LOOP |
| DI | DRAINAGE INLET | LT&T | LEAD, TACK AND TAG | UTL | UTILITY |
| DIA | DIAMETER | m | METRIC | WL | WATER LINE |
| DMH | DROP MANHOLE | MH | MANHOLE | | |
| DW | DRIVEWAY | MON | MONUMENT | | |

APPROVED

Date



index to plans

| sheet no. | description |
|-----------|-------------------------------------|
| 1 | COVER SHEET |
| 2 | SANTA ROSA ALIGNMENT 10+00 to 15+00 |
| 3 | FOOTHILL ALIGNMENT 19+50 to 20+50 |
| 4 | DETAILS |

Reference Documents:
City Standard Specifications - August 2020 Edition
City Engineering Standards - August 2020 Edition



san luis obispo county, california

CALTRANS - FOOTHILL SANTA ROSA SEWER PIPE REPLACEMENT

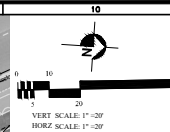
APPROVED BY

Brian Nelson, City Engineer R.C.E. 79870 Approved Date

| | | |
|-------------|-------------------|--------|
| PROJECT NO. | DATE | SHEET |
| 2000096 | JANUARY 2025 | 1 of 4 |
| | FILE NO./LOCATION | |
| | 2023803 - C001 | |



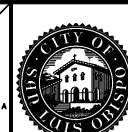
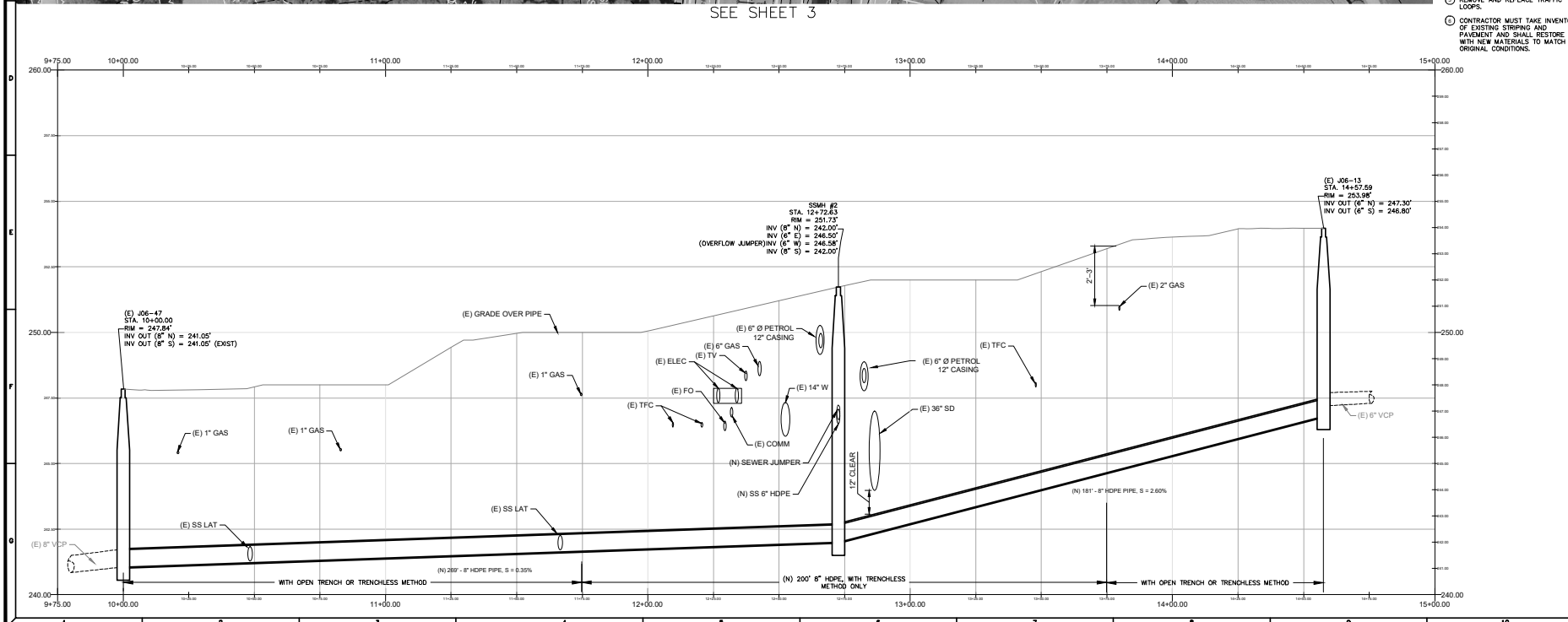
SEE SHEET 3



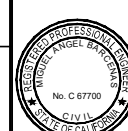
| Line Table | | |
|------------|---------|------------------|
| Line # | Length | Direction |
| L3 | 285.503 | N12° 05' 55.26"W |
| L4 | 177.897 | N24° 10' 18.10"W |

| Curve Table | | | |
|-------------|---------|----------|----------|
| Curve # | Length | Radius | Delta |
| C2 | 877.851 | 1973.206 | 025.4901 |

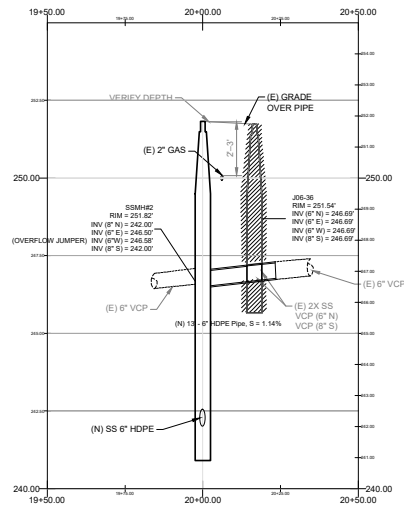
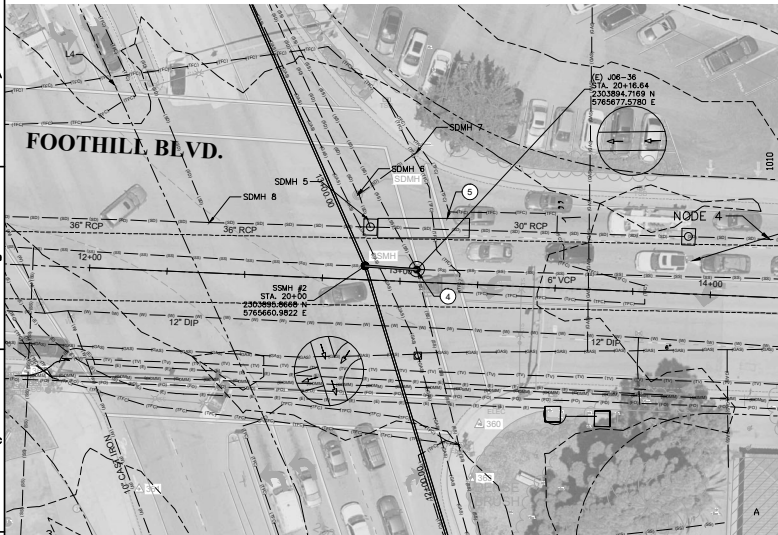
- CONSTRUCTION NOTES**
- REMOVE EXISTING MANHOLE AND REPLACE WITH NEW MANHOLE PER STD 6610.
 - CONNECT NEW WYE PER STD 6810.
 - CONSTRUCTION CENTERLINE OVER PROPOSED ALIGNMENT.
 - CONSTRUCT MANHOLE BASE WITH ORIENTATION SHOWN AND PIPE INVERTS PER PROFILE DESIGN.
 - REMOVE AND REPLACE TRAFFIC LOOPS.
 - CONTRACTOR MUST TAKE INVENTORY OF EXISTING STRIPING AND PAINT AND SHALL RESTORE WITH NEW MATERIALS TO MATCH ORIGINAL CONDITIONS.



CITY OF SAN LUIS OBISPO
CALTRANS SANTA ROSA SEWER PIPE REPLACEMENT
 SANTA ROSA STA. 10+00 TO 15+00



DESIGNED BY: MB
 DRAWN BY: N. GURNEY
 CHECKED BY: MB
 APPROVED BY: MB
 SCALE: AS NOTED
 DATE: JANUARY 2025
 CITY PROJECT NO: 2000096
 PLAN FILE NO: LOCATION 2023803 - C101
 SHEET NO:



- VERT SCALE: 1"=20'
HORIZ SCALE: 1"=20'
- CONSTRUCTION NOTES**
- ① ABANDON EXISTING MANHOLE PER CITY STANDARDS
 - ② REPAIR 36" RCP PER DETAIL 2 SHEET 4.
 - ③ CONTRACTOR MUST TAKE INVENTORY OF EXISTING STRIPING AND PAVEMENT AND SHALL RESTORE WITH NEW MATERIALS TO MATCH ORIGINAL CONDITIONS.



CITY OF SAN LUIS OBISPO
CALTRANS SANTA ROSA SEWER PIPE REPLACEMENT
FOOTHILL BLVD. STA. 19+50 TO 20+50



DESIGNED BY: MB
DRAWN BY: N. GURNEY
CHECKED BY: MB
APPROVED BY: MB
SCALE: AS NOTED
DATE: JANUARY 2025
CITY PROJECT NO: 2000096
PLAN FILE NO: LOCATION 2023803 - C102
SHEET NO:



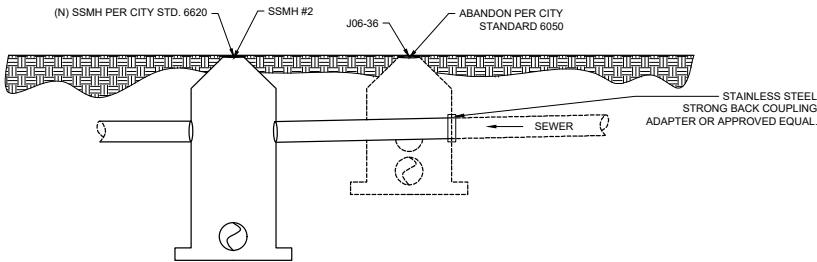
CITY OF SAN LUIS OBISPO
CALTRANS SANTA ROSA SEWER PIPE REPLACEMENT

DETAILS

PROJECT TITLE

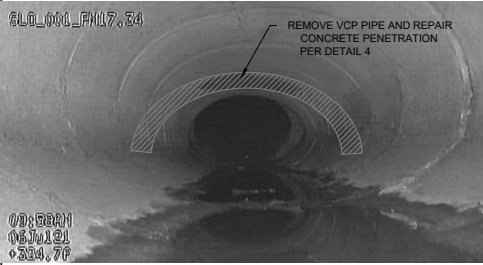


| | |
|------------------------|----------------|
| DESIGNED BY | MB |
| DRAWN BY | N. GURNEY |
| CHECKED BY | MB |
| APPROVED BY | MB |
| SCALE | AS NOTED |
| DATE | JANUARY 2025 |
| CITY PROJECT NO. | 2000096 |
| PLAN FILE NO./LOCATION | 2023803 - C201 |
| SHEET NO. | |



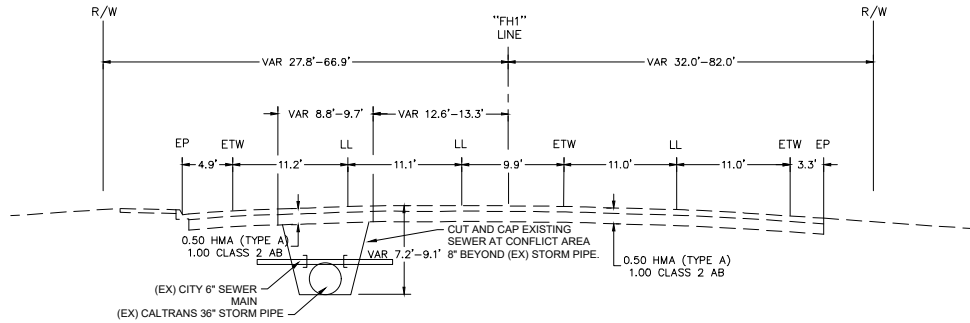
1 J06-36 MANHOLE DETAIL

NTS



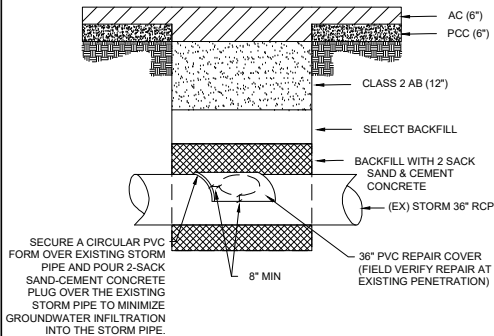
2 CONCRETE PENETRATION

SCALE: 1" = 1'



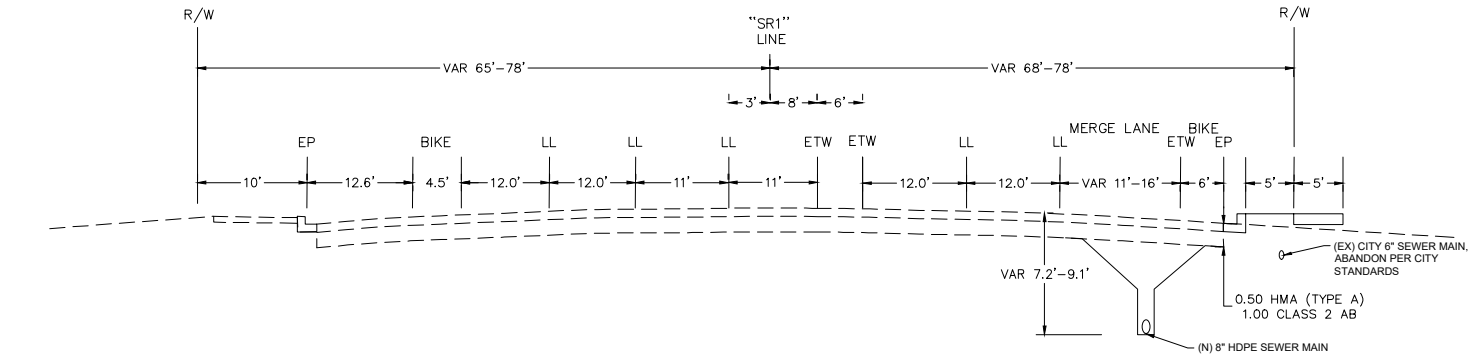
3 FOOTHILL ASPHALT SECTION AT STA 20+16

NTS



4 PVC REPAIR COVER DETAIL

NTS



5 SANTA ROSA ASPHALT SECTION AT STA 13+50+00

NTS

