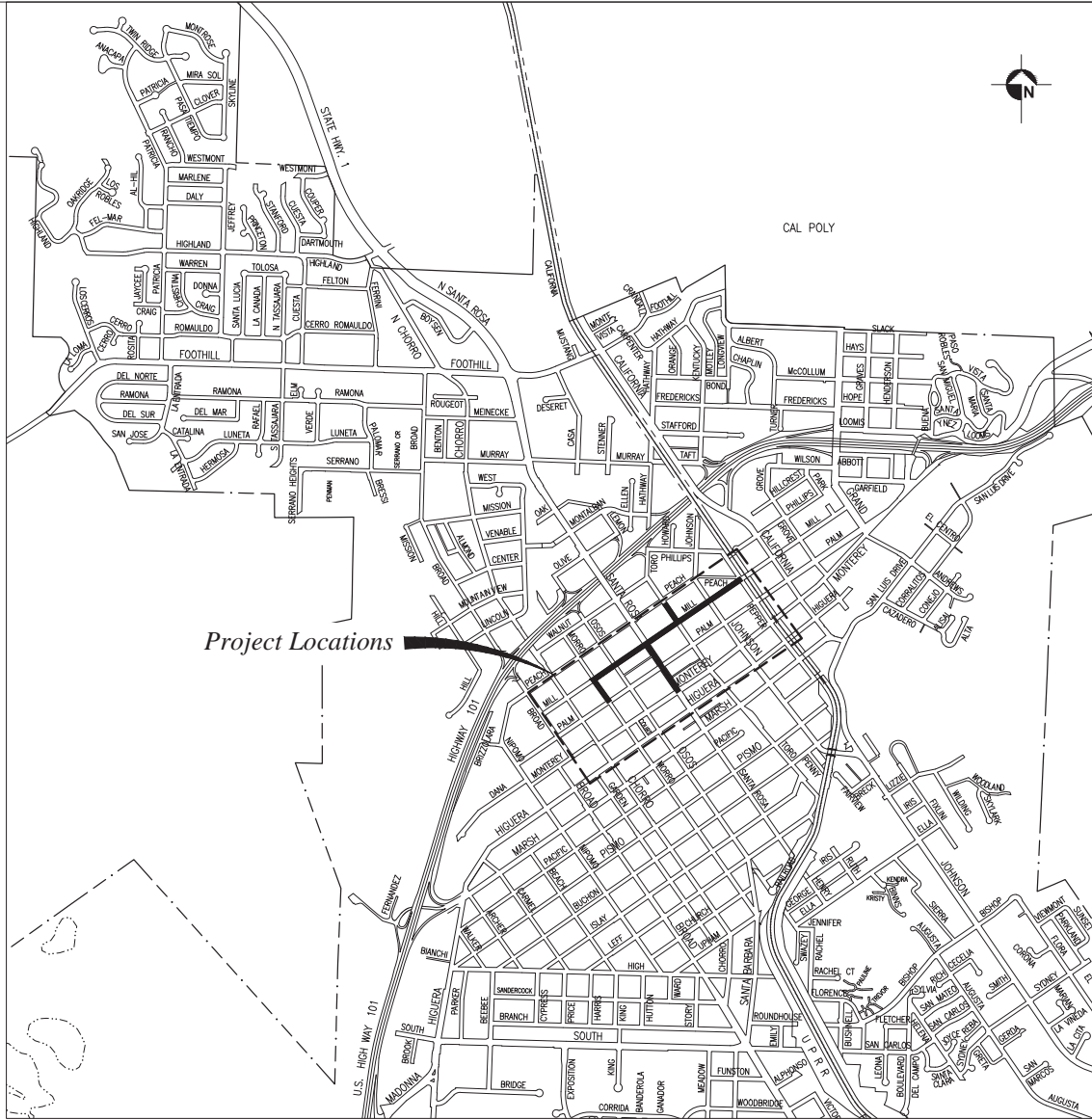


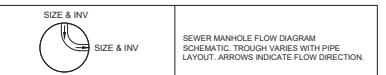
**general notes**

- IT SHALL BE THE RESPONSIBILITY OF THE CONTRACTOR OR PERMITEE TO CONTACT "UNDERGROUND SERVICE ALERT U.S.A." TOLL FREE AT 1-800-227-2600 FORTY-EIGHT (48) HOURS PRIOR TO START OF CONSTRUCTION, FOR LOCATION OF POWER, TELEPHONE, OIL AND NATURAL GAS UNDERGROUND FACILITIES. CONTRACTOR OR PERMITEE SHALL ALSO CONTACT THE APPROPRIATE AGENCY FOR THE LOCATION OF CABLE T.V., WATER, SEWER, DRAINAGE OR UNDERGROUND FACILITIES.
- THE CONTRACTOR SHALL POSSESS A CLASS "A" OR "C-34" LICENSE AT THE TIME OF BID OPENING.
- THE "OUT CENTERLINE MONUMENTS BEFORE WORK AND REPLACE IF DISTURBED IN ACCORDANCE WITH THE LAND SURVEYORS ACT, AND SECTION 5-1.36E, REPLACE MONUMENT AND WELL PER ENG. STD. 9020.
- THE CONTRACTOR MUST REPLACE ALL PAVEMENT STRIPES, MARKINGS, AND MARKERS DISTURBED DURING CONSTRUCTION. ALL PAVEMENT STRIPES AND MARKINGS WITHIN 5 FEET OF THE DISTURBED AREA MUST BE REPLACED. ALL STRIPING IS PER STATE STANDARD PLANS AND PER PER ENGINEERING STANDARD SPECIFICATION 84-1.01A.
- SEWER MAIN WITH LESS THAN 1% SLOPE MUST BE INSTALLED WITH FLOAT ROCK AS BEDDING AND INITIAL BACKFILL. SEE ENG. STD. 9020, NOTE 10 FOR ADDITIONAL REQUIREMENTS.
- CONNECT EXISTING VCP SEWER MAIN TO NEW MANHOLE WITH 3 FOOT PVC STUB AND STRONG BACK RC COUPLINGS.
- CONNECT EXISTING HDPE SEWER MAIN TO NEW MANHOLE WITH 3 FOOT HDPE STUB AND FUSED COUPLINGS OR BUTT FUSION.
- CONNECT EXISTING PVC SEWER MAIN TO NEW MANHOLE WITH 3 FOOT PVC STUB AND PVC COUPLINGS.
- ALL PVC AND HDPE PIPE CONNECTIONS MUST BE MADE WITH POLY-CAM SERIES 731 COUPLINGS OR APPROVED EQUAL.
- ALL PIPE LENGTHS ARE APPROXIMATE. THE CONTRACTOR IS RESPONSIBLE FOR VERIFYING ALL PIPE LENGTHS.
- APPROXIMATE LOCATION OF LATERALS ARE SHOWN ON PLANS. LOCATING LATERALS IS THE RESPONSIBILITY OF THE CONTRACTOR AND ANY DAMAGE TO A LATERAL MUST BE REPAIRED IMMEDIATELY AND AT NO COST TO THE CITY.
- ALL NEW MANHOLE MUST BE COATED PER SECTION 77-3.03D OF THE PROJECT SPECIAL PROVISIONS.



*Project Locations*

**legend**



- DEAD OR UNUSED SEWER LATERAL. VERIFY CONDITION. ABANDON IN PLACE IF DEAD, UNUSED, OR CAPPED.
- CONNECT SEWER LATERALS AND MARK TOP OF CURB WITH THE LETTER 'S' PER ENG. STD. 6810.
- (E) STORM DRAIN
- (E) SEWER
- (E) WATER
- (E) GAS
- (E) OIL
- (E) TELEPHONE
- (E) FIBER OPTIC
- ABANDONED SEWER
- ABANDONED WATER

*index to plans*

sheet no.	description
1	COVER SHEET
2	MORRO STREET
3	MILL STREET
4	MILL STREET
5	MILL STREET
6	MILL STREET
7	TORO STREET
8	SANTA ROSA STREET
9	SANTA ROSA STREET

Reference Documents:  
 City Standard Specifications - 2020 Edition  
 City Engineering Standards - 2020 Edition



san luis obispo county, california

**MILL STREET SEWER REPLACEMENT**



APPROVED BY

Brian A. Nelson, City Engineer R.C.E. C79870 Approved Date

SPECIFICATION NO.	DATE	SHEET
<b>2000561</b>	SEPTEMBER 2024	1 of 9
FILE NO./LOCATION		



MILL STREET SEWER REPLACEMENT

MORRO STREET

PROJECT TITLE

SHEET TITLE

APPROVED: XXXX

DESIGNED BY: HN

DRAWN BY: HN

CHECKED BY: MB

APPROVED BY: BN

SCALE: HORIZ 1" = 20'

VERT 1" = 4'

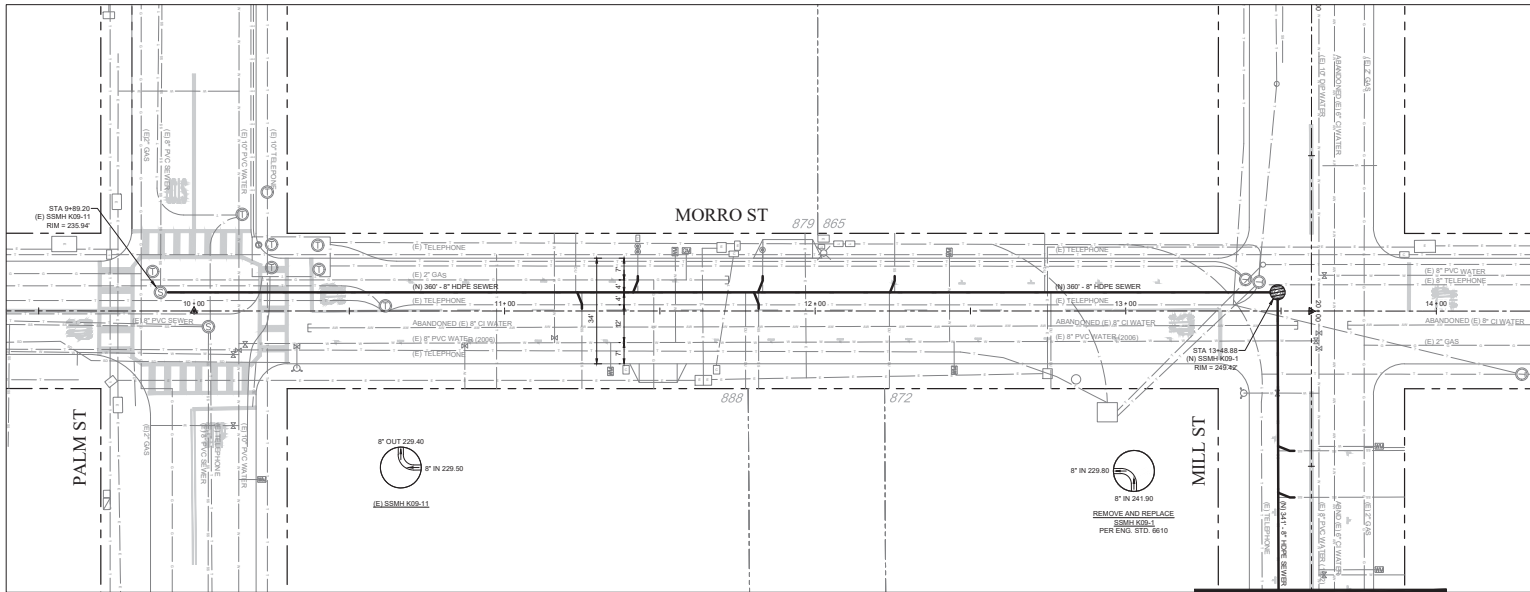
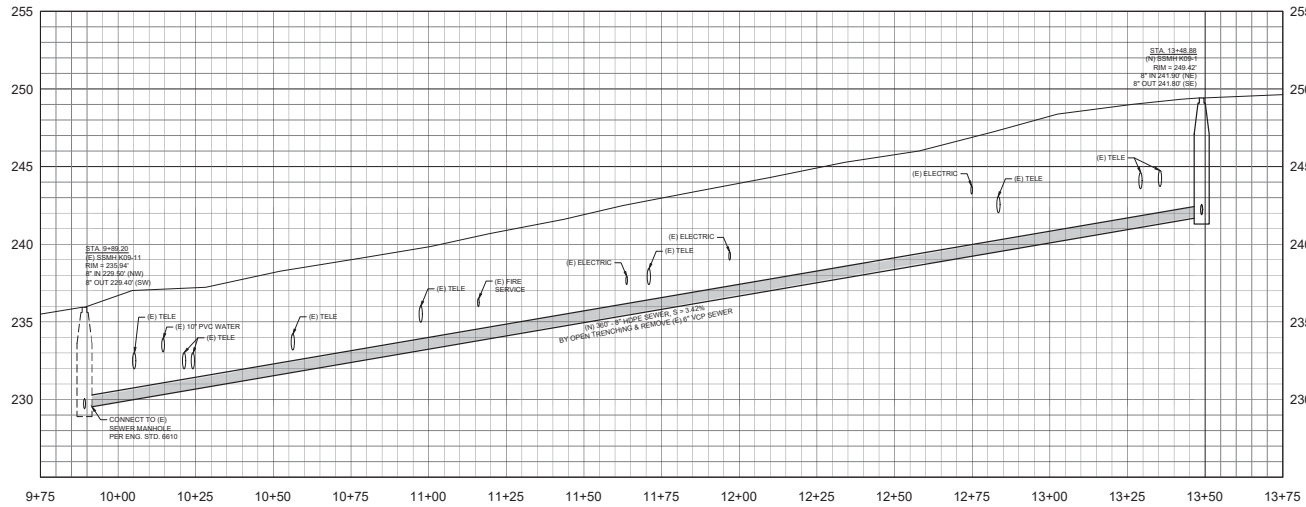
DATE: SEPTEMBER 2024

CITY SPECIFICATION NO. 2000561

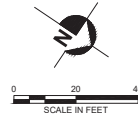
PLAN FILE NO. / LOCATION

SHEET NO.

2 of 9



SEE SHEET 3





**MILL STREET SEWER REPLACEMENT**

MILL STREET

PROJECT TITLE

SHEET TITLE

APPROVED: XXXX

DESIGNED BY: HN

DRAWN BY: HN

CHECKED BY: MB

APPROVED BY: BN

SCALE: HORIZ 1" = 20'

VERT 1" = 4'

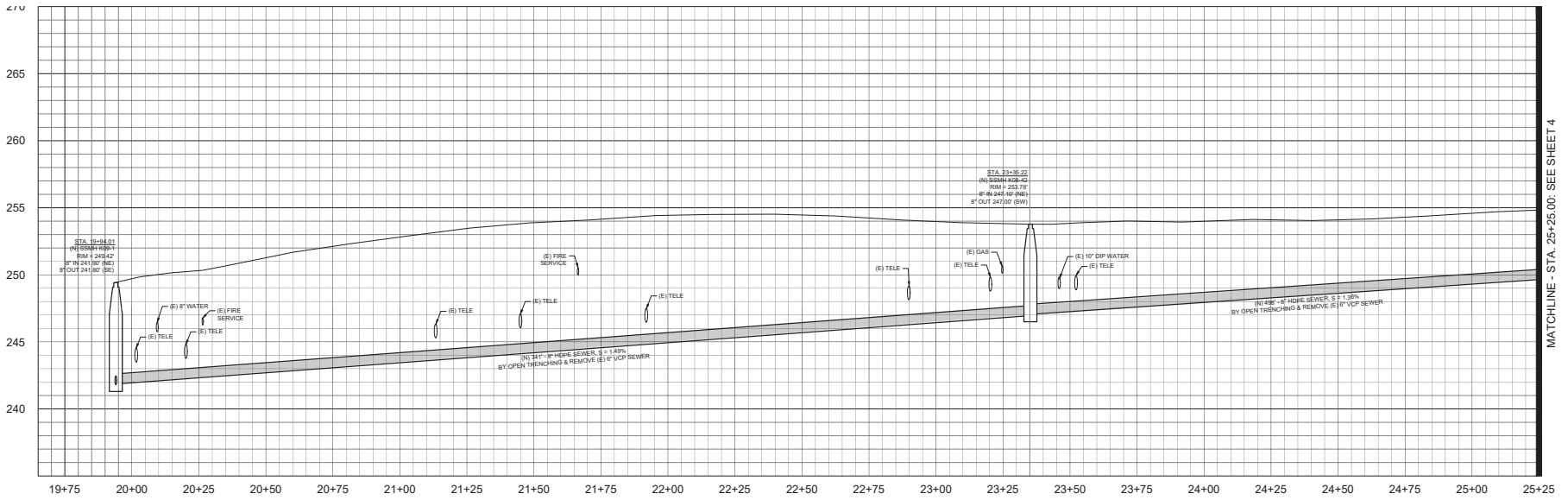
DATE: SEPTEMBER 2024

CITY SPECIFICATION NO. 2000561

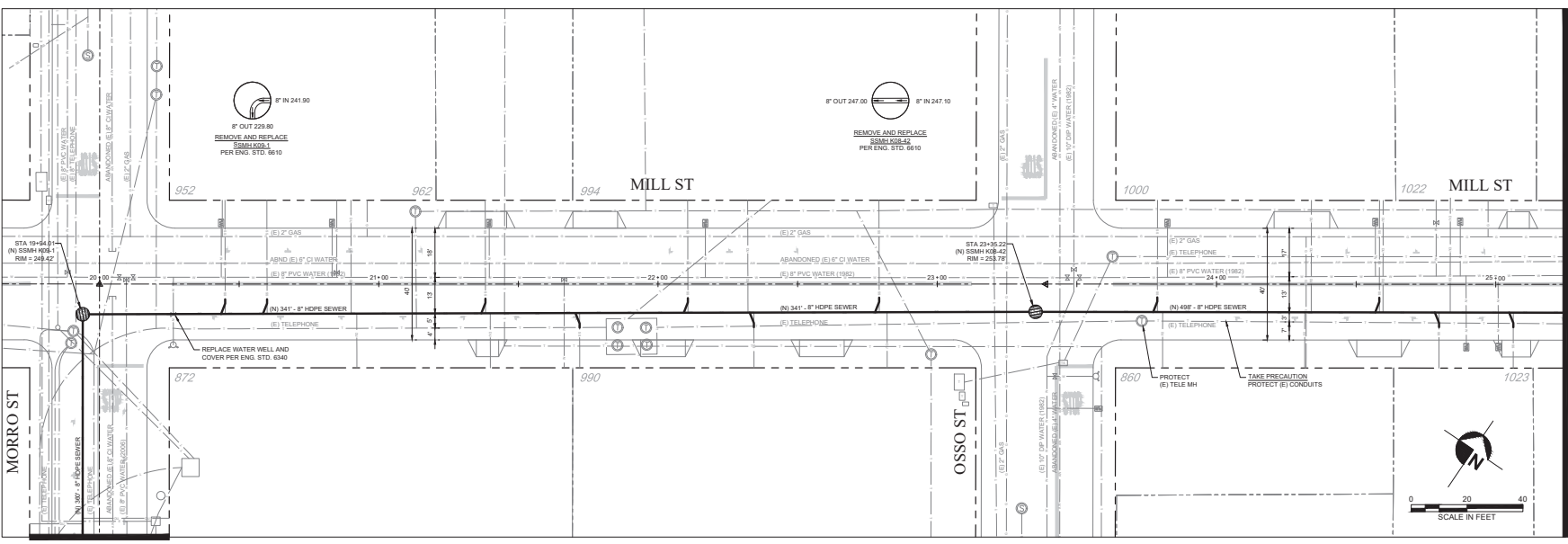
PLAN FILE NO. / LOCATION

SHEET NO.

**3 of 9**

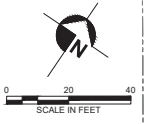


MATCHLINE - STA. 25+25.00; SEE SHEET 4



MATCHLINE - STA. 25+25.00; SEE SHEET 4

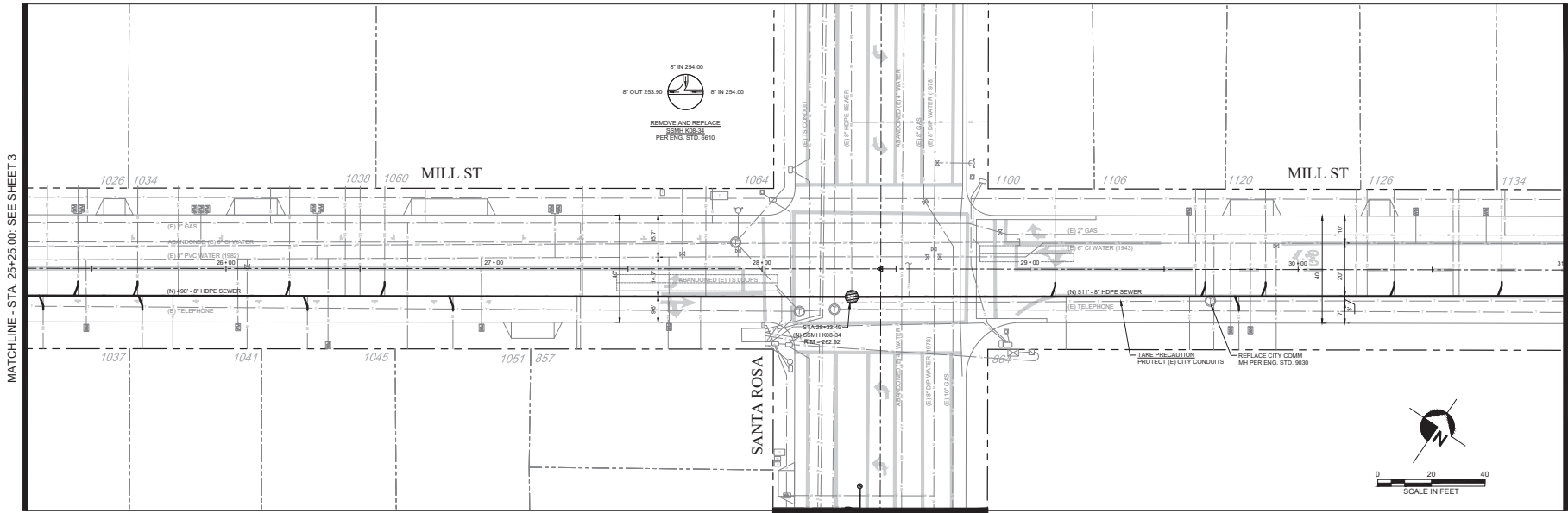
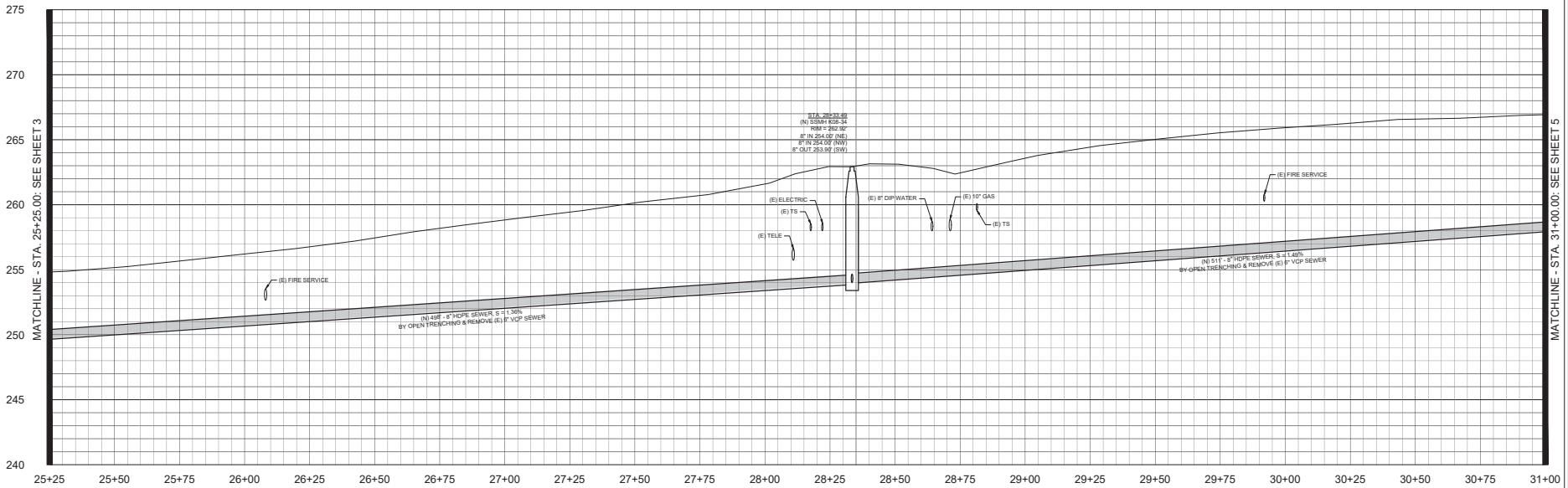
SEE SHEET 2





MILL STREET SEWER REPLACEMENT

MILL STREET



MATCHLINE - STA. 25+25.00: SEE SHEET 3

MATCHLINE - STA. 31+00.00: SEE SHEET 5

PROJECT TITLE

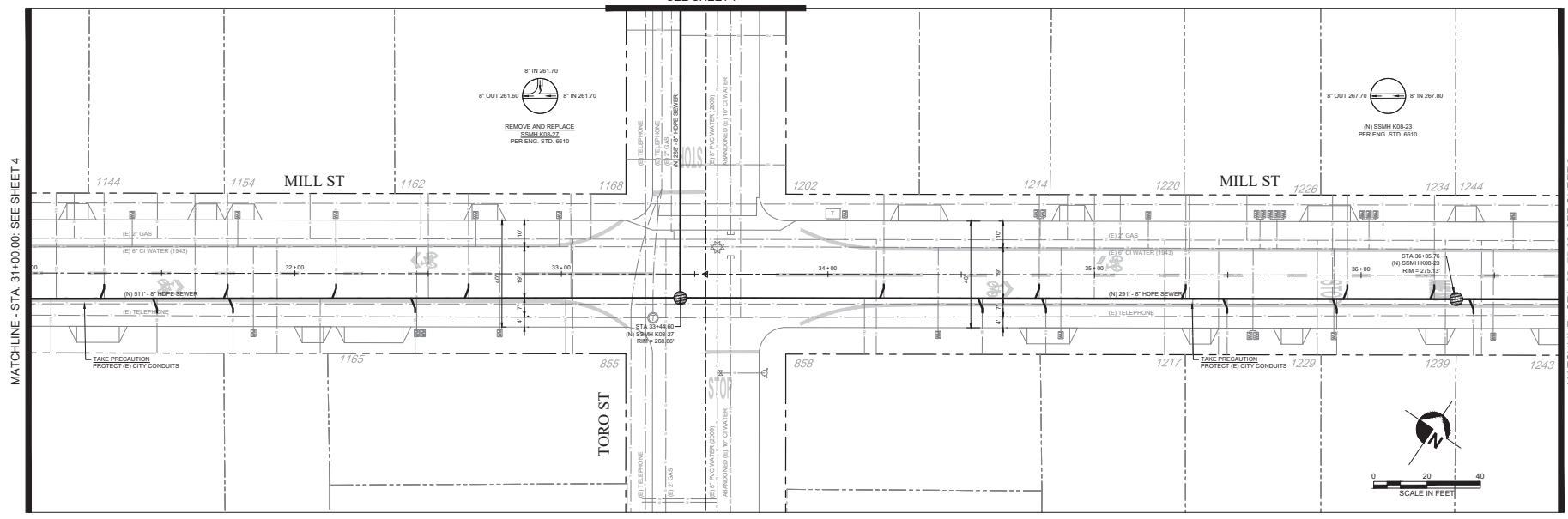
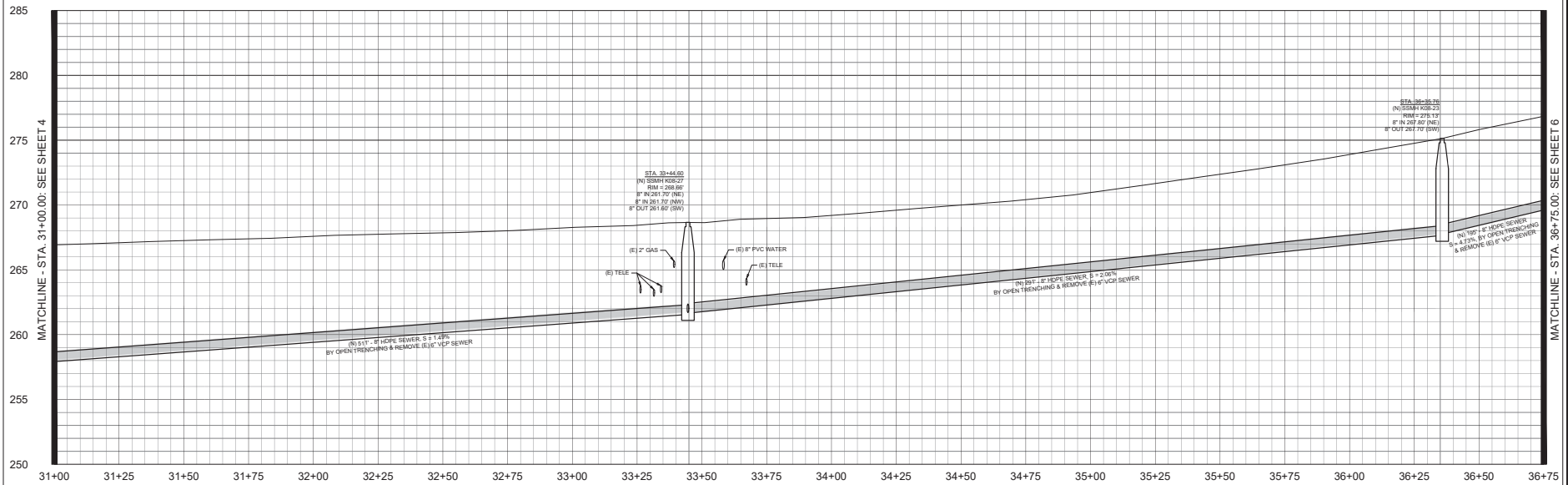
SHEET TITLE

APPROVED: XXXX  
 DESIGNED BY: HN  
 DRAWN BY: HN  
 CHECKED BY: MB  
 APPROVED BY: BN  
 SCALE: HORIZ 1" = 20'  
 VERT 1" = 4'  
 DATE: SEPTEMBER 2024  
 CITY SPECIFICATION NO.: 2000561  
 PLAN FILE NO./LOCATION:  
 SHEET NO.



MILL STREET SEWER REPLACEMENT

MILL STREET



PROJECT TITLE

MILL STREET SEWER REPLACEMENT

SHEET TITLE

MILL STREET

APPROVED: XXXX

DESIGNED BY: HN

DRAWN BY: HN

CHECKED BY: MB

APPROVED BY: BN

SCALE: HORIZ 1" = 20'

VERT 1" = 4'

DATE: SEPTEMBER 2024

CITY SPECIFICATION NO. 2000561

PLAN FILE NO. / LOCATION

SHEET NO.



MILL STREET SEWER REPLACEMENT

MILL STREET

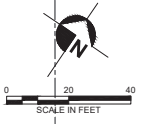
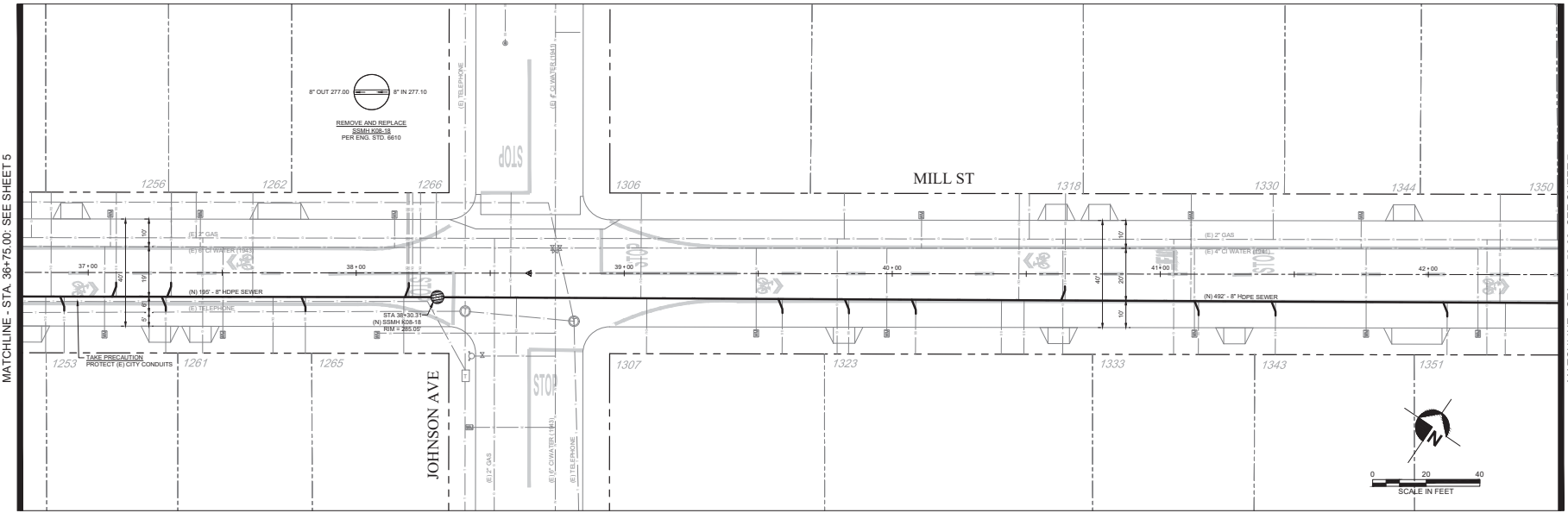
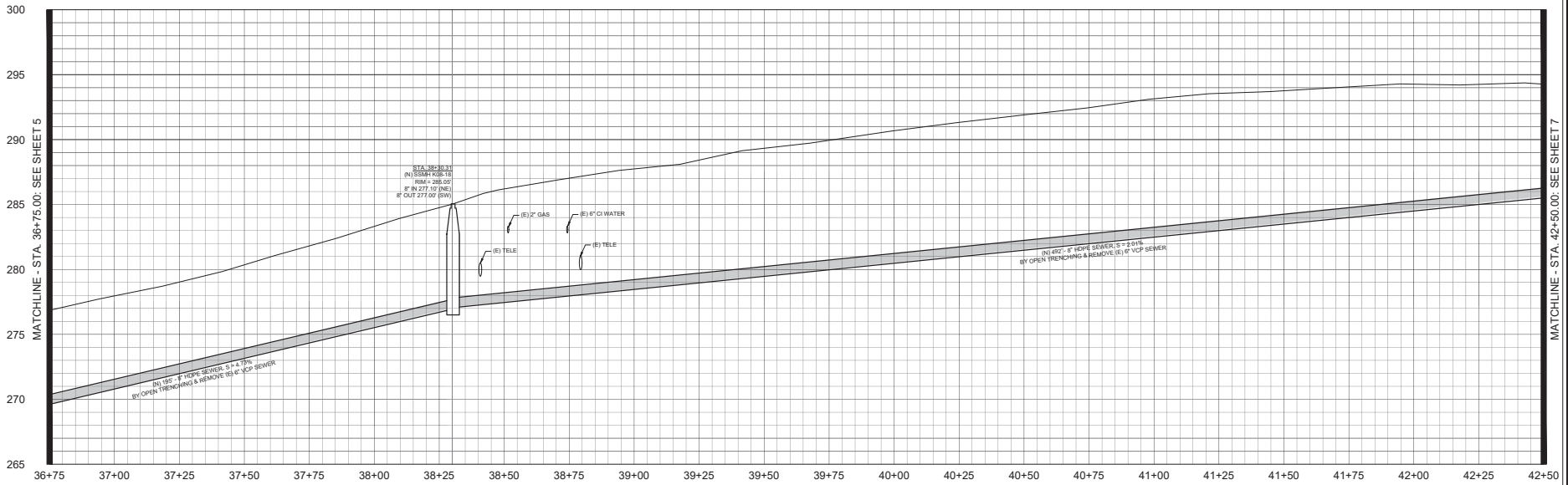
PROJECT TITLE

SHEET TITLE

MATCHLINE - STA. 36+75.00: SEE SHEET 5

MATCHLINE - STA. 42+50.00: SEE SHEET 7

APPROVED:	XXXX
DESIGNED BY:	HN
DRAWN BY:	HN
CHECKED BY:	MB
APPROVED BY:	BN
SCALE:	HORIZ 1" = 20' VERT 1" = 4'
DATE:	SEPTEMBER 2024
CITY SPECIFICATION NO.:	2000561
PLAN FILE NO. / LOCATION:	
SHEET NO.:	





MILL STREET SEWER REPLACEMENT

TORO STREET

PROJECT TITLE

SHEET TITLE

APPROVED: XXXX

DESIGNED BY: HN

DRAWN BY: HN

CHECKED BY: MB

APPROVED BY: BN

SCALE: HORIZ 1" = 20'

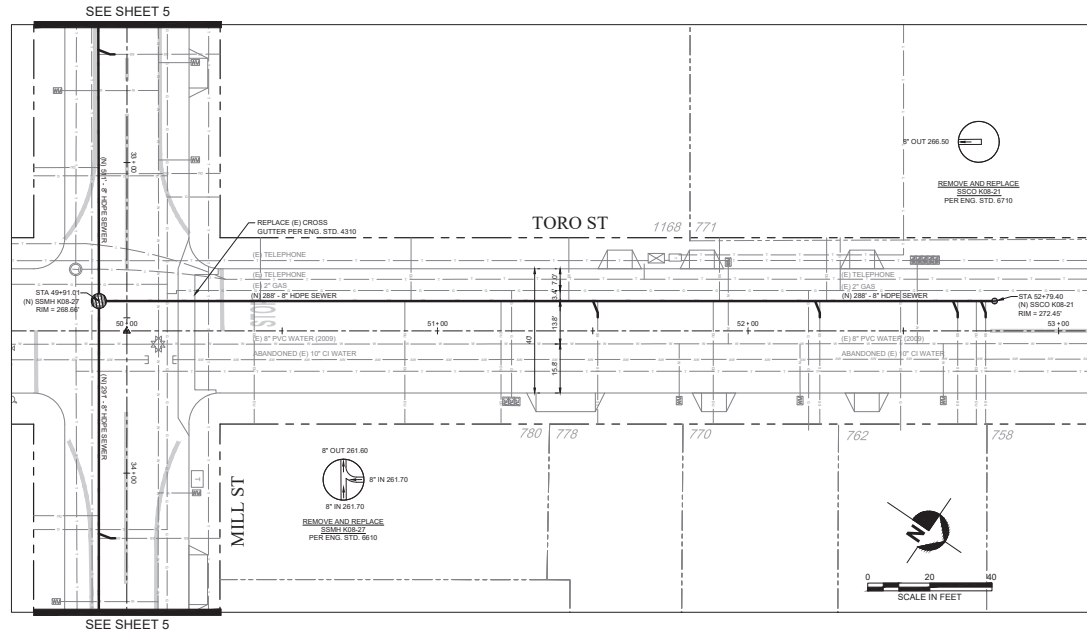
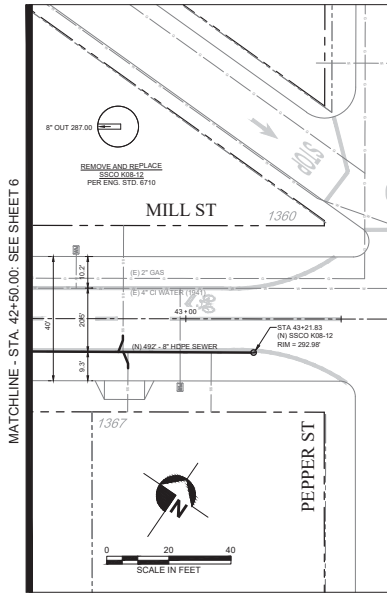
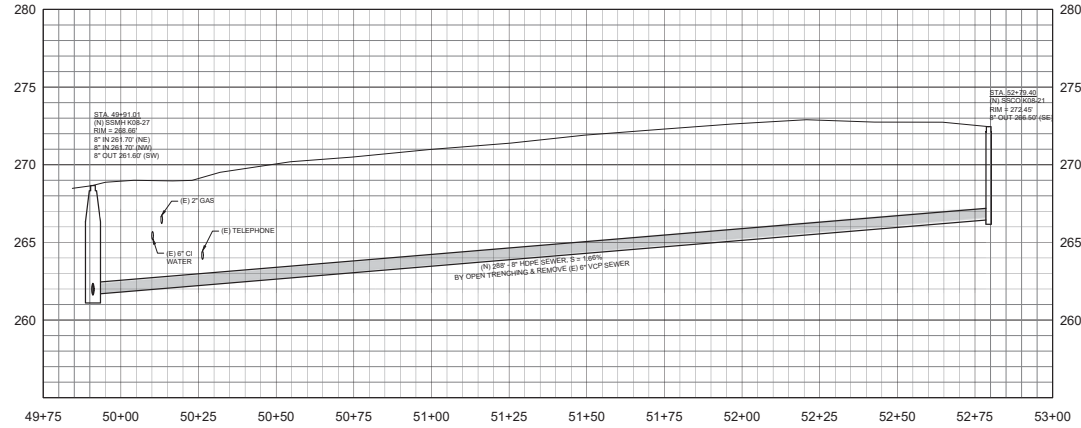
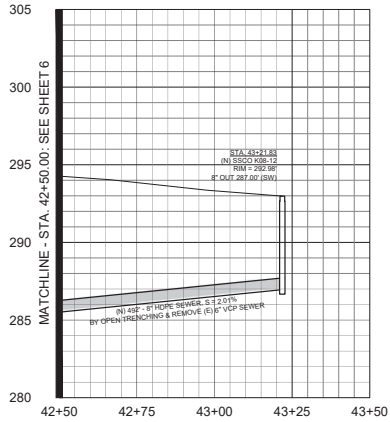
VERT 1" = 4'

DATE: SEPTEMBER 2024

CITY SPECIFICATION NO. 2000561

PLAN FILE NO. / LOCATION

SHEET NO.





**MILL STREET SEWER REPLACEMENT**

SANTA ROSA STREET

PROJECT TITLE

SHEET TITLE

APPROVED: XXXX

DESIGNED BY: HN

DRAWN BY: HN

CHECKED BY: MB

APPROVED BY: BN

SCALE: HORIZ 1" = 20'

VERT 1" = 4'

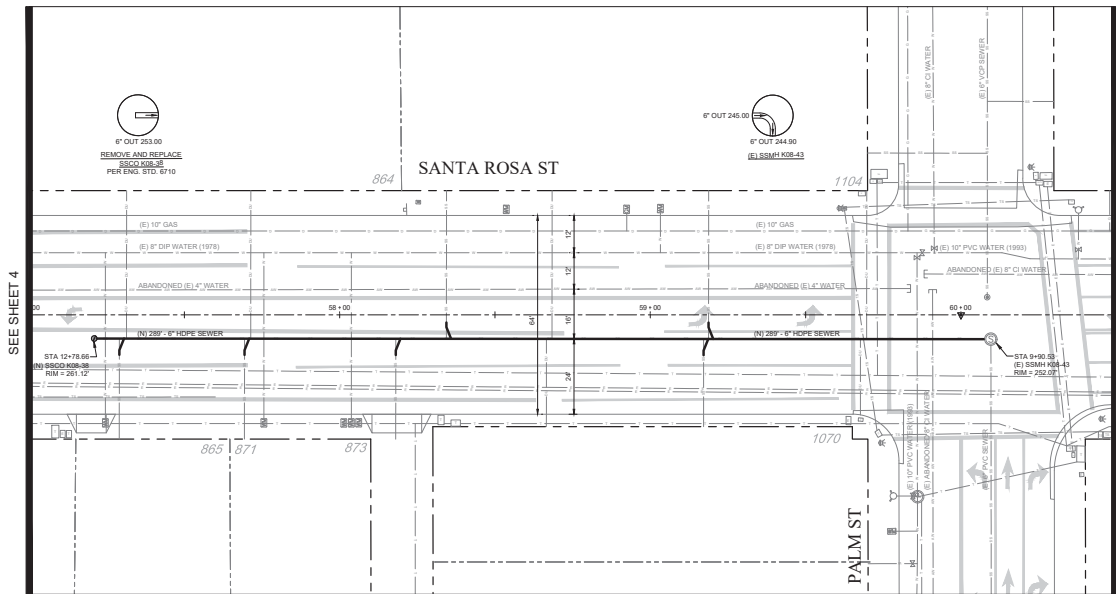
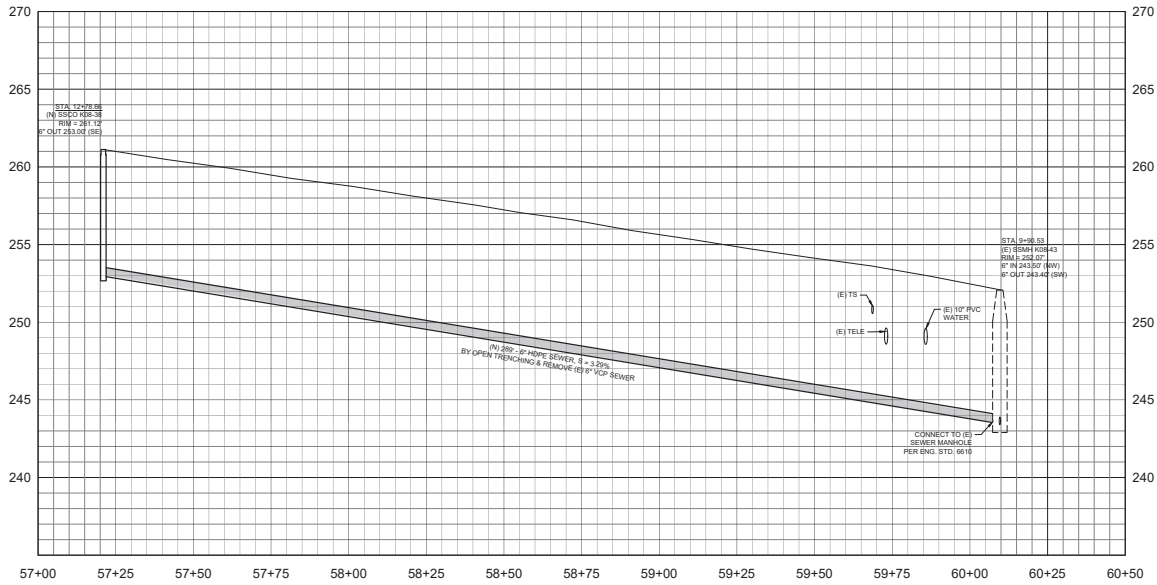
DATE: SEPTEMBER 2024

CITY SPECIFICATION NO. 2000561

PLAN FILE NO. / LOCATION

SHEET NO.

**8 of 9**



SEE SHEET 4

MATCHLINE - STA. 60+50.00: SEE SHEET 9





MILL STREET SEWER REPLACEMENT

SANTA ROSA STREET

PROJECT TITLE

SHEET TITLE

APPROVED: XXXX

DESIGNED BY: HN

DRAWN BY: HN

CHECKED BY: MB

APPROVED BY: BN

SCALE: HORIZ 1" = 20'

VERT 1" = 4'

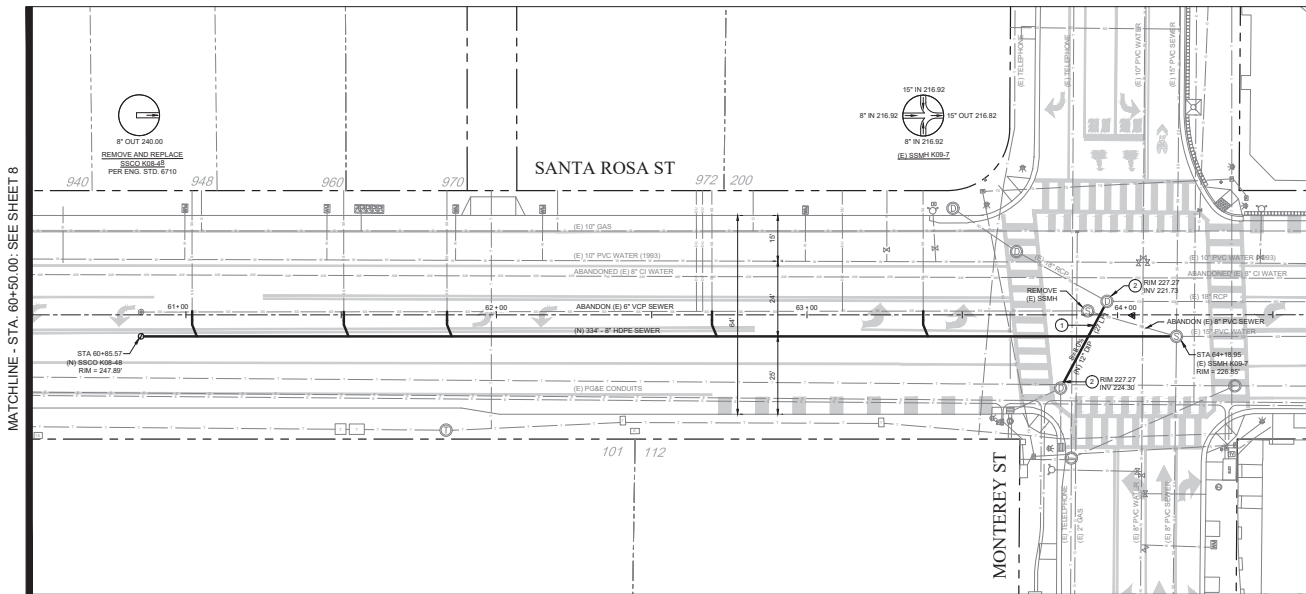
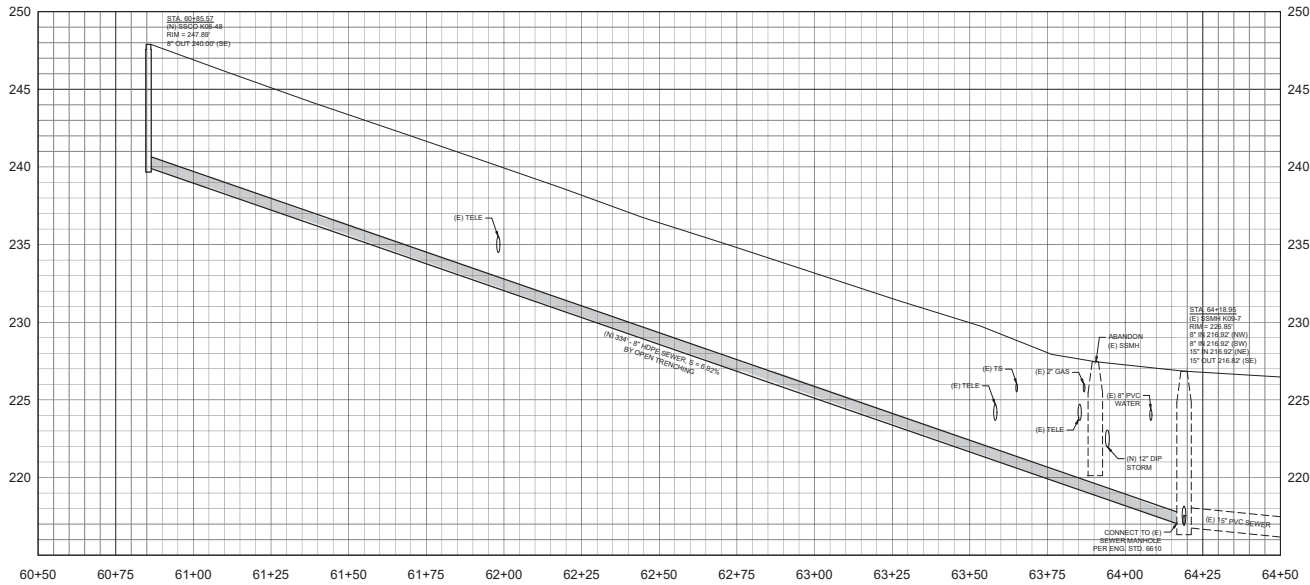
DATE: SEPTEMBER 2024

CITY SPECIFICATION NO. 2000561

PLAN FILE NO. / LOCATION

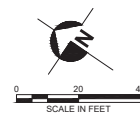
SHEET NO.

9 of 9



CONSTRUCTION NOTES

- ① REMOVE (E) 22"x13" CMP AND INSTALL (N) 12" DIP STORM. TRENCH BACKFILL WITH 1 SACK SLURRY
- ② CONNECT TO (E) STORMDRAIN STRUCTURE PER ENG. STD. 354D



MATCHLINE - STA. 60+50.00; SEE SHEET 8