



Tree Committee
AGENDA

Monday, July 22, 2024, 5:30 p.m.

Council Hearing Room, 990 Palm Street, San Luis Obispo

The Tree Committee holds in-person meetings. Zoom participation will not be supported at this time. Attendees of City Council or Advisory Body meetings are eligible to receive one hour of complementary parking; restrictions apply, visit [Parking for Public Meetings](#) for more details.

INSTRUCTIONS FOR PUBLIC COMMENT:

Public Comment prior to the meeting (must be received 3 hours in advance of the meeting):

Mail - Delivered by the U.S. Postal Service. Address letters to the City Clerk's Office at 990 Palm Street, San Luis Obispo, California, 93401.

Email - Submit Public Comments via email to advisorybodies@slocity.org. In the body of your email, please include the date of the meeting and the item number (if applicable). Emails *will not* be read aloud during the meeting.

Voicemail - Call (805) 781-7164 and leave a voicemail. Please state and spell your name, the agenda item number you are calling about, and leave your comment. Verbal comments must be limited to 3 minutes. Voicemails *will not* be played during the meeting.

**All correspondence will be archived and distributed to members, however, submissions received after the deadline may not be processed until the following day.*

Public Comment during the meeting:

Meetings are held in-person. To provide public comment during the meeting, you must be present at the meeting location.

Electronic Visual Aid Presentation. To conform with the City's Network Access and Use Policy, Chapter 1.3.8 of the [Council Policies & Procedures Manual](#), members of the public who desire to utilize electronic visual aids to supplement their oral presentation must provide display-ready material to the City Clerk by 12:00 p.m. on the day of the meeting. Contact the City Clerk's Office at cityclerk@slocity.org or (805) 781-7114.

1. CALL TO ORDER

Chair Elizabeth Lucas will call the Regular Meeting of the Tree Committee to order.

2. PUBLIC COMMENT FOR ITEMS NOT ON THE AGENDA

The public is encouraged to submit comments on any subject within the jurisdiction of the Tree Committee that *does not* appear on this agenda. Although the Committee will not take action on items presented during the Public Comment Period, the Chair may direct staff to place an item on a future agenda for discussion.

3. CONSENT

Matters appearing on the Consent Calendar are expected to be non-controversial and will be acted upon at one time. A member of the public may request the Tree Committee to pull an item for discussion. The public may comment on any and all items on the Consent Agenda within the three-minute time limit.

3.a CONSIDERATION OF MINUTES - JUNE 24, 2024 TREE COMMITTEE MINUTES

5

Recommendation:

To approve the Tree Committee Minutes of June 24, 2024.

4. NEW BUSINESS

4.a REVIEW OF LAGUNA LAKE DOG PARK REVITALIZATION PROJECT REPLANTING PLAN (TREE-0344-2024)

9

Recommendation:

Review the Laguna Lake Dog Park Revitalization Planting Plan and provide recommendations for species selections based on the information provided in the plans and characteristics specific to the site.

5. COMMENT AND DISCUSSION

5.a ARBORIST REPORT

Receive a brief update from Urban Forest Program Coordinator / City Arborist Walter Gault.

6. ADJOURNMENT

The next Regular Meeting of the Tree Committee meeting is scheduled for August 26, 2024 at 5:30 p.m. in the Council Hearing Room at City Hall, 990 Palm Street, San Luis Obispo.

LISTENING ASSISTIVE DEVICES are available -- see the Clerk

The City of San Luis Obispo wishes to make all of its public meetings accessible to the public. Upon request, this agenda will be made available in appropriate alternative formats to persons with disabilities. Any person with a disability who requires a modification or accommodation in order to participate in a meeting should direct such request to the City Clerk's Office at (805) 781-7114 at least 48 hours before the meeting, if possible. Telecommunications Device for the Deaf (805) 781-7410.

Agenda related writings or documents provided to the Tree Committee are available for public inspection on the City's website:

<https://www.slocity.org/government/mayor-and-city-council/agendas-and-minutes>. Meeting video recordings can be found on the City's website:

<http://opengov.slocity.org/WebLink/Browse.aspx?id=61087&dbid=0&repo=CityClerk>



Tree Committee Minutes

June 24, 2024, 5:30 p.m.

Council Hearing Room, 990 Palm Street, San Luis Obispo

Tree Committee Members Present: Member Alan Bate, Member Henry Bonifas, Member Daniel Canella, Member Brian Pineda, Member Emily Rosten, Vice Chair Ben Parker, Chair Elizabeth Lucas

City Staff Present: Urban Forest Program Coordinator / City Arborist Walter Gault, Senior Planner Rachel Cohen, City Clerk Teresa Purrington

1. CALL TO ORDER

A Regular Meeting of the San Luis Obispo Tree Committee was called to order on June 24, 2024 at 5:33 p.m. in the Council Hearing Room at City Hall, 990 Palm Street, San Luis Obispo, by Chair Lucas with all members present.

2. PUBLIC COMMENT FOR ITEMS NOT ON THE AGENDA

Public Comment:

None

--End of Public Comment--

3. CONSENT

3.a CONSIDERATION OF MINUTES - MAY 20, 2024 TREE COMMITTEE MINUTES

Motion By Vice Chair Parker

Second By Member Rosten

To approve the Tree Committee Minutes of May 20, 2024.

Ayes (7): Member Bate, Member Bonifas, Member Canella, Member Pineda, Member Rosten, Vice Chair Parker, and Chair Lucas

CARRIED (7 to 0)

4. TREE REMOVAL APPEAL

- 4.a REVIEW A TREE REMOVAL APPEAL OF THE CITY ARBORIST'S DECISION TO DENY REMOVAL OF TWO (2) SHAMEL ASH (FRAXINUS UHDEI) TREES LOCATED AT 2125 STORY STREET, IN THE PARKWAY NEAR CORNER OF SANDERCOCK AND STORY

City Arborist Walter Gault presented the staff report and responded to Committee inquiries.

Appellant representative, Sam Oakley, provided an overview of the Tree Removal Appeal and responded to questions raised.

Chair Lucas opened Public Comment

Public Comment:

None

--End of Public Comment--

Chair Lucas closed Public Comment

Motion By Member Canella

Second By Member Rosten

To approve the removal of two (2) Shamel Ash (*Fraxinus uhdei*) trees consistent with Section 12.24.090 (E)(1)(d) and (f) of the Municipal Code, with the following conditions:

- A replanting plan shall be submitted prior to removal of the two trees.
- Two (2) 24-inch box trees with a minimum height of 25 feet shall be planted in the same location as the removed trees. Recommend using structural soil and significant tree protection around the trees.
- An additional four (4) trees with a minimum height of 35 feet shall be planted at a location of the applicant's choosing on the school property.

Ayes (7): Member Bate, Member Bonifas, Member Canella, Member Pineda, Member Rosten, Vice Chair Parker, and Chair Lucas

CARRIED (7 to 0)

5. TREE REMOVAL APPLICATION

- 5.a REVIEW A TREE REMOVAL CONVENIENCE APPLICATION TO REMOVE ONE (1) LONDON PLANE TREE (PLANTANUS X ACERFOLIA) (HISPANICA) LOCATED AT 4275 POINSETTIA STREET

Vice Chair Parker declared a conflict with this item and recused as he lives within the boundary, and serves as a Board Member, on the Santa Lucia Hills Homeowners Association.

City Arborist Walter Gault presented the staff report and responded to Committee inquiries.

Applicant, Luann Cheda, provided an overview of the Tree Removal Application and responded to questions raised.

Chair Lucas opened Public Comment

Public Comment:

None

--End of Public Comment--

Chair Lucas closed Public Comment

Motion By Member Bate

Second By Member Pineda

To recommend the Community Development Director approve the Tree Removal Application to remove one (1) London Plane (Platanus X hispanica) tree. The Committee finds the removal consistent with Section 12.24.090 (G) (5) and (6), per the landscape plan submitted, with the added recommendation that drought tolerant native trees be planted.

Ayes (4): Member Bate, Member Canella, Member Rosten, and Chair Lucas

Noes (2): Member Bonifas, and Member Pineda

Recused (1): Vice Chair Parker

CARRIED (4 to 2)

6. COMMENT AND DISCUSSION

6.a ARBORIST REPORT

Urban Forest Program Coordinator / City Arborist Walter Gault provided an update of upcoming projects and activities related to the City's urban forest.

7. ADJOURNMENT

The meeting was adjourned at 7:18 p.m. The next Regular Meeting of the Tree Committee is scheduled for July 22, 2024 at 5:30 p.m. in the Council Hearing Room at City Hall, 990 Palm Street, San Luis Obispo.

APPROVED BY TREE COMMITTEE: XX/XX/202X

TREE COMMITTEE AGENDA REPORT

SUBJECT: LAGUNA LAKE DOG PARK REVITALIZATION PROJECT

FILE NUMBER: TREE-0344-2024
PROJECT ADDRESS: 504 Madonna Rd.
APPLICANT: City of San Luis Obispo

FROM: Walter Gault, City Arborist
Phone Number: (805) 781-7578
Email: wgault@slocity.org

RECOMMENDATION

Review the Laguna Lake Dog Park Revitalization Planting Plan and provide recommendations for species selections based on the information provided in the plans and characteristics specific to the site.

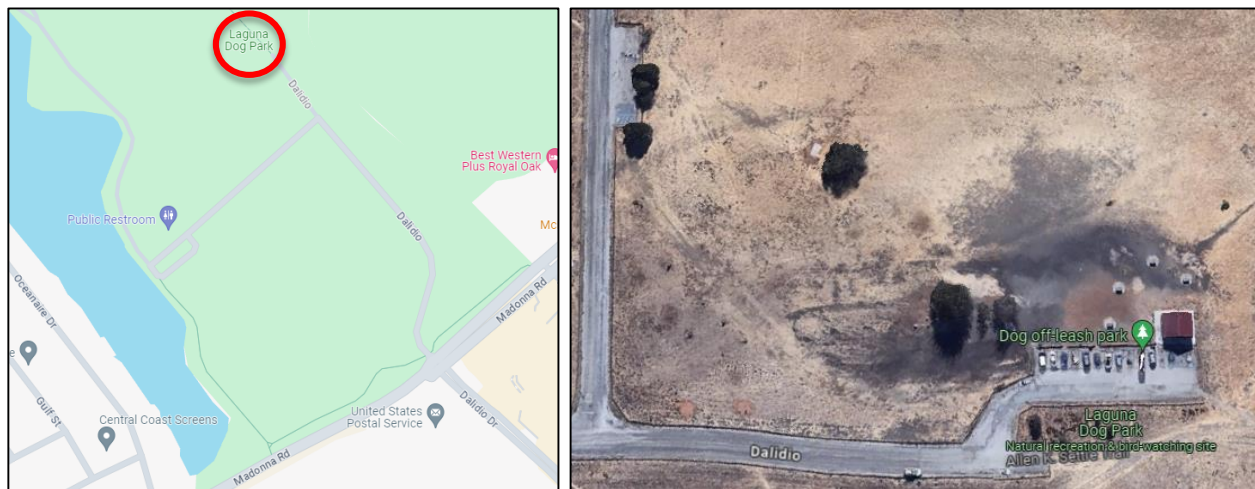


Figure 1: Proposed location of the Laguna Lake Dog Park

1.0 COMMITTEE PURVIEW

The Tree Committee's role is to review the planting plan and the site at Laguna Lake Park and provide recommendations for species selections based on the information provided in the plans and characteristics specific to the site.

2.0 PROJECT DESCRIPTION

City of San Luis Obispo Public Works Department (Applicant) has been approved to remove two trees as part of the Laguna Lake Dog Park Revitalization Project and replant a minimum of 6 trees. The applicant has developed a draft landscape plan that shows the planting of 38 new trees (see Attachment A, pages 25 and 26).

2.1 Existing Conditions

The Laguna Lake Open Space is one of the harsher microclimates in the city limits. While generally cooler, it is also windier and drier. The soil transitions from a rocky outcrop to Cropley clay in the flatter sections. The estimated frost-free period is 300 days, which is about 15 days less than more protected areas closer to the city's center.

The Cropley soil series consists of very deep, moderate to well-draining soils that formed in alluvium from mixed rock sources. Cropley soils are on alluvial fans, floodplains and in small basins.

Throughout the open space, eucalyptus and pine species appear to be performing well. Eucalyptus are strong performers in dryer and harsher conditions. Oak tree species are performing moderately well, and Camphor and cypress tree species are either stunted or showing signs of stress. One *Grevillea robusta* (Silk Oak) tree, located south of the dog park towards the lake, is performing fairly well.

2.2 Planting Plan

The project will be required to plant six (6) trees as a minimum compensatory replanting for the removal of two (2) trees as a part of the project. As currently proposed, the applicant has drafted a planting plan that includes a variety of trees, shrubs, groundcovers, and other plants. The proposed 38 trees that are included in this planting plan are predominantly native to California. As a part of the "shrub" planting schedule, nine (9) 15-gallon toyons are to be planted. 18 manzanitas are functioning as ground cover in addition to spreading rush and wild rye. Extent or existence of irrigation is still to be determined.

Species for review.

The tree planting plan includes 5 different species: (8) *Alnus Rhombifolia* (White Alder), (5) *Cupressus macrocarpa* (Monterey Cypress), (2) *Platanus racemosa* (California sycamore), (10) *Quercus agrifolia* (Coast live oak) and (13) *Chitalpa tashkentensis*. Species of highest focus are the alder, cypress and chitalpa. **Staff is seeking Tree Committee direction on whether these are the right tree species for this location and based on the existing planting plan palette.**

- The alder is a riparian tree and has high water needs. While the water table is likely high due to the presence of Laguna Lake, it is uncertain that the tree will benefit from it due to the dog park's distance from the lake.
- Monterey cypress is relatively drought tolerant but only in cooler coastal conditions where they can benefit from the marine layer. In dryer inland areas, cypress perform better with more water. Existing cypress at Laguna Lake are not robust.

TREE-0344-2024

Tree Committee Report – 7/22/2024

- Chitalpa is supposed to be a tough drought tolerant tree, but it is also relatively small. There are concerns about its performance in the cooler and harsher environment at Laguna Lake. There is fair specimen that is currently flowering located in the Mission Plaza seating area in between the San Luis Creek bridge and Chorro Street. This location is wind-insulated, warmer and likely has more access to water than the site at Laguna Lake Park.

Species substitutions to consider.

- Eucalyptus at Laguna Lake are performing well. New species to consider: *Angophora costata* (Sydney Red Gum), *Corymbia ficifolia* (Red Flowering Gum), *Eucalyptus cinerea* (Argyle Apple), *Eucalyptus spathulata* (Swamp Mallet), *Eucalyptus erythrocorys* (Red-Cap Gum), *Eucalyptus torquata* (Coral Gum)
- Due to the predominantly California native planting pallet, consider substituting or adding different oak species (*oblongifolia*, *engelmannii*, *hypoleuroides*, *rugosa*, *tomentella*)
- Other California natives for consideration: *Lyonothamnus floribundus* (Catalina Ironwood)
- *Melaleuca quinquenervia* (Paperbark/ Cajeput) is a low-water, drought tolerant tree from Australia and underutilized in the City.
- Other species recommendations welcome. [SelectTree](#) is a useful resource when comparing species.

3.0 ACTIONS

- 3.1 Provide direction to staff supporting the existing planting plan.
- 3.2 Provide direction to staff on other tree species that should be considered as a part of the planting plan.

4.0 ATTACHMENTS

A - Laguna Lake Dog Park Site Plan

general notes:

- IT SHALL BE THE RESPONSIBILITY OF THE CONTRACTOR OR PERMITTEE TO CONTACT "UNDERGROUND SERVICE ALERT OF NORTHERN CALIFORNIA" BY PHONE AT 8-1-1 TWO WORKING DAYS PRIOR TO START OF CONSTRUCTION FOR LOCATION OF POWER, TELEPHONE, OIL AND NATURAL GAS UNDERGROUND FACILITIES. CONTRACTOR OR PERMITTEE SHALL ALSO CONTACT THE APPROPRIATE AGENCY FOR THE LOCATION OF CABLE T.V., WATER, SEWER, DRAINAGE OR UNDERGROUND FACILITIES.
- THE CONTRACTOR SHALL POSSESS A CLASS "A" LICENSE AT THE TIME OF THE BID OPENING.
- CONTRACTOR SHALL DETERMINE ALL UTILITY CONFLICTS AND SHALL POT HOLE AND LOCATE PRIOR TO CONSTRUCTION, UTILITY LOCATION, DEPTH, SIZE AND MATERIAL SHALL BE REPORTED TO THE ENGINEER, AS REQUIRED BY THE SPECIAL PROVISIONS
- EROSION CONTROL MEASURES SHALL BE IMPLEMENTED AND MAINTAINED DURING ALL CONSTRUCTION AND GROUND DISTURBING ACTIVITIES PER CITY OF SAN LUIS OBISPO STANDARDS.
- SEE APPENDIX [B] OF THE PROJECT SPECIAL PROVISIONS FOR THE GEOTECHNICAL ENGINEERING REPORT "LAGUNA LAKE DOG PARK IMPROVEMENTS, 504 MADONNA ROAD, SAN LUIS OBISPO, CALIFORNIA" PREPARED ON AUGUST 4, 2023 FOR THE CITY OF SAN LUIS OBISPO

scope of work:

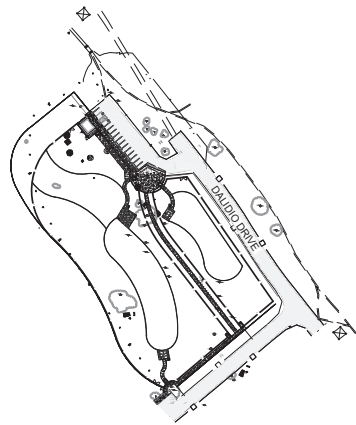
- WORK FOR THIS PLAYGROUND RENOVATION PROJECT INCLUDES:
- REMOVAL OF THE EXISTING FENCE AND CMU WALLS, EXISTING LOG BARRIERS, EXISTING CONCRETE, EXISTING BENCHES, AND EXISTING NON-ADA COMPLIANT PATH OF TRAVEL.
 - INSTALLATION OF NEW SIDEWALK, RECREATION AREAS, SHADE EQUIPMENT, PAVERS, PICNIC TABLES, BENCHES, FENCING, ADA PATH OF TRAVEL, ADA COMPLIANT RAMP, AND WATER FOUNTAINS.

datum:

- SEE SHEET SC-1 FOR SURVEY DATUM INFORMATION.

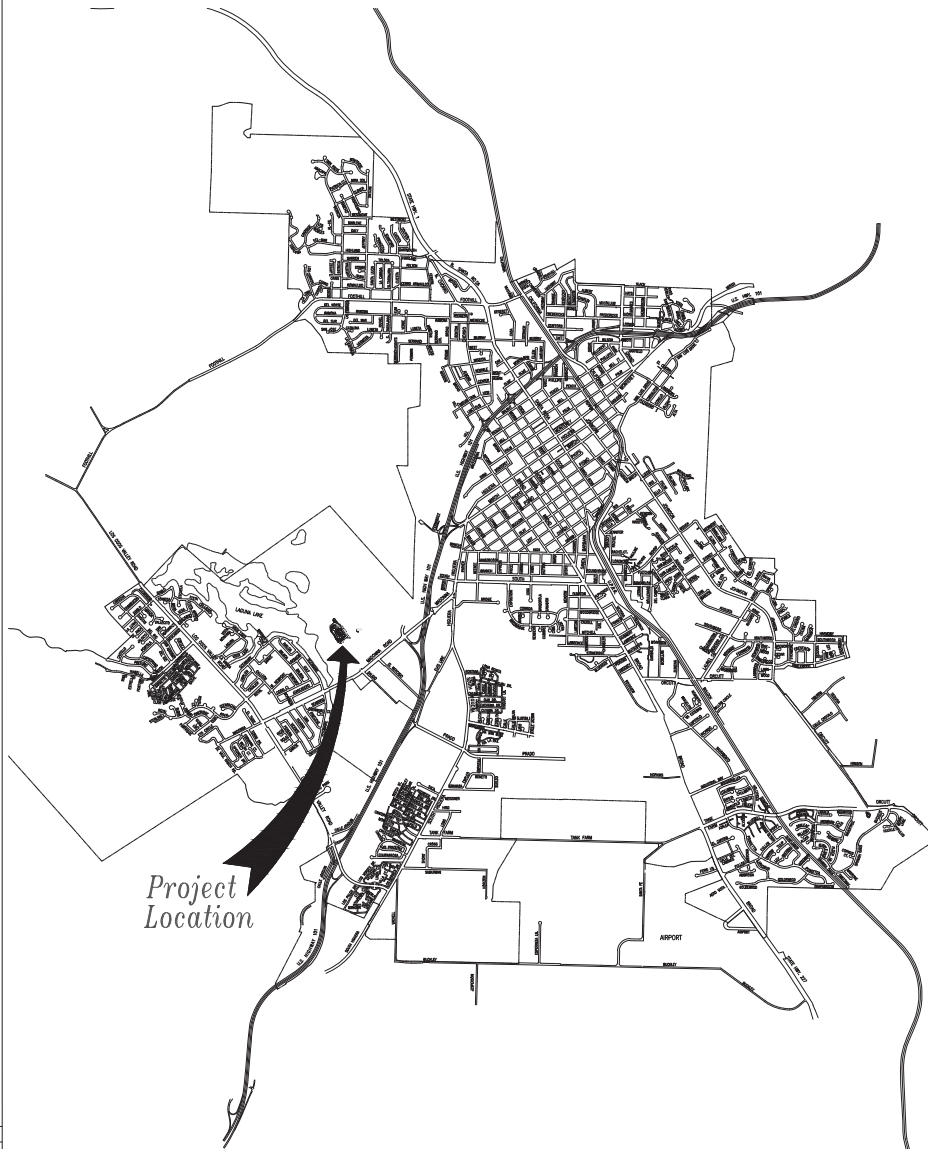
deferred submittals:

- SHADE STRUCTURE STRUCTURAL DESIGN. SEE SPECIAL PROVISIONS, SECTION 5-1.23B(3)
- SWPPP



DOG PARK LOCATION MAP

Scale: NTS



Project Location

SCALE: NTS

index to plans

Sheet List Table	
Sheet Number	Sheet Title
C-1.0	TITLE SHEET
C-1.1	GENERAL NOTES
SC-1	SURVEY CONTROL
SC-2	SURVEY - EXISTING CONDITIONS
SC-3	SURVEY - EXISTING CONDITIONS
C-1.2	DEMOLITION PLAN
C-2.0	HORIZONTAL CONTROL
C-3.0	OVERALL GRADING PLAN
C-3.1	GRADING PLAN
C-3.2	GRADING PLAN
C-3.3	GRADING PLAN
C-3.4	GRADING PLAN
C-4.0	UTILITY PLAN
C-5.0	EROSION CONTROL PLAN
C-5.1	EROSION CONTROL DETAILS
C-6.0	CONSTRUCTION DETAILS
C-6.1	CONSTRUCTION DETAILS
SL-1	SITE PLAN
SL-2	SITE PLAN
SL-3	SITE PLAN ENLARGEMENTS
SL-4	SITE PLAN ENLARGEMENTS
SD-1	SITE DETAILS & NOTES
SD-2	SITE DETAILS & NOTES
SD-3	SITE DETAILS & NOTES
PP-1	PLANTING PLAN
PP-2	PLANTING PLAN
PD-1	PLANTING DETAILS & NOTES
IP-1	IRRIGATION PLAN
IP-2	IRRIGATION PLAN
ID-1	IRRIGATION DETAILS & NOTES
ID-2	IRRIGATION DETAILS & NOTES

Reference Documents:
City Standard Specifications - August 2020 Edition
City Engineering Standards - August 2020 Edition

APPLICABLE CODES:

CALTRANS STANDARD PLANS - 2022
CBC - 2022 California Building Code
CPC - 2022 California Plumbing Code
GBC - 2022 Green Building Code
CFC - 2022 California Fire Code



LAGUNA LAKE DOG PARK IMPROVEMENTS

504 MADONNA ROAD

SPECIFICATION NO. 2000526-01

APPROVED BY

Brian Nelson
City Engineer

R.C.E. C 79870

DATE
12/21/2023
FILE NO./LOCATION
SHEET
C-1.0 OF 31

GENERAL NOTES

1. THESE PLANS ARE PART OF A SET OF CONTRACT DOCUMENTS AND SHALL NOT BE CONSIDERED THE SOLE SOURCE OF CONSTRUCTION INFORMATION. ALL CONSTRUCTION WORK AND INSTALLATIONS SHALL CONFORM TO THE CITY OF SAN LUIS OBISPO AND CALTRANS STANDARDS AND SPECIFICATIONS. THE CONTRACT DOCUMENTS AND WORK SHALL BE SUBJECT TO THE APPROVAL OF THE CITY OF SAN LUIS OBISPO PUBLIC WORKS DEPARTMENT.
2. THE CONTRACTOR SHALL HAVE COPIES OF THE APPROVED CONTRACT DOCUMENTS FOR THIS PROJECT ON THE SITE AT ALL TIMES AND SHALL BE FAMILIAR WITH ALL APPLICABLE STANDARDS AND SPECIFICATIONS.
3. CONTRACTOR AGREES THAT HE OR SHE SHALL ASSUME SOLE AND COMPLETE RESPONSIBILITY FOR THE JOB SITE DURING THE COURSE OF THE PROJECT, INCLUDING SAFETY OF ALL PERSONS AND PROPERTY, THAT THIS REQUIREMENT SHALL APPLY CONTINUOUSLY AND NOT BE LIMITED TO NORMAL WORKING HOURS, AND THAT THE CONTRACTOR SHALL DEFEND, INDEMNIFY, AND HOLD THE ENGINEER AND OWNER HARMLESS FROM ANY AND ALL LIABILITY, REAL OR ALLEGED, IN CONNECTION WITH THE PERFORMANCE OF WORK ON THIS PROJECT, EXCEPTING FOR LIABILITY ARISING FROM THE SOLE NEGLIGENCE OF THE OWNER OR ENGINEER, OR THIRD PARTY IN VIOLATION OF THE LAW OR IN TRESPASS. THE CONTRACTOR SHALL PRACTICE SAFETY AT ALL TIMES AND SHALL FURNISH, ERECT, AND MAINTAIN, SUCH FENCES, BARRICADES, LIGHTS, AND SIGNS NECESSARY TO GIVE ADEQUATE PROTECTION TO THE PUBLIC AT ALL TIMES.
4. INFORMATION PERTAINING TO EXISTING UNDERGROUND FACILITIES IS BASED ON RECORD INFORMATION AND IS SHOWN FOR INFORMATION PURPOSES ONLY. UNDERGROUND FEATURES SHOWN IN PLAN VIEW ON THE PLANS ARE INDICATED WITH THEIR APPROXIMATE LOCATION AND EXTENT, AND MAY NOT APPEAR IN PROFILE OR SECTION VIEWS. THE CONTRACTOR SHALL BE RESPONSIBLE FOR CONTACTING ALL AGENCIES INVOLVED AND SHALL LOCATE ALL FACILITIES PRIOR TO EXCAVATION IN ANY AREA. THE CONTRACTOR SHALL CALL UNDERGROUND SERVICE ALERT (USA), TOLL FREE AT 811 AND THE CITY OF SAN LUIS OBISPO 807Y-EXT (48) HOURS PRIOR TO THE START OF CONSTRUCTION.
5. THE CONTRACTOR SHALL CONTINUALLY REVIEW JOB SITE CONDITIONS, CONDITIONS REQUIRING CONSTRUCTION DIFFERENT FROM THAT SHOWN ON PLANS SHALL BE REPORTED TO THE ENGINEER PRIOR TO PROCEEDING WITH THE AFFECTED CONSTRUCTION.
6. THESE DRAWINGS REPRESENT THE FINISHED CONDITION AND UNLESS OTHERWISE INDICATED, THEY DO NOT SHOW THE METHOD OF CONSTRUCTION.
7. ALL IMPROVEMENTS SHOWN OR INDICATED ON THESE DRAWINGS ARE TO BE CONSTRUCTED AND/OR INSTALLED BY THE CONTRACTOR ON THIS PROJECT, UNLESS THEY ARE CALLED OUT AS: "EXISTING", "FUTURE", "N/C", NOT A PART, OR HAVE SOME OTHER EXCLUDING NOTATION.
8. CONTRACTOR SHALL KEEP A SET OF PROJECT DRAWINGS ON WHICH RECORD INFORMATION SHALL BE PLACED NOTING DEVIATIONS FROM THE PLANS IN THE LOCATION, GRADE, SIZE, TYPE, AND SCOPE OF WORK WHICH IS CONSTRUCTED.
9. OCCUPATIONAL SAFETY AND HEALTH ACT (OSHA) REQUIREMENTS AND STANDARDS SHALL BE OBSERVED AT THE JOB SITE AT ALL TIMES.
10. EXISTING SURVEY MONUMENTS SHALL BE PROTECTED IN PLACE OR SHALL BE TIED OUT BY A CALIFORNIA LICENSED LAND SURVEYOR PRIOR TO DISTURBANCE. PROPER RESETTING OF ALL EXISTING MONUMENTS AND OTHER SURVEY MARKERS SHALL BE DONE BY THE CONTRACTOR AT HIS/HER OWN RISK. ANY SURVEY MONUMENTS DISTURBED BY THE CONTRACTOR SHALL BE REPLACED PRIOR TO OCCUPANCY BY A PROFESSIONAL LICENSED LAND SURVEYOR IN ACCORDANCE WITH SECTION 8771 OF THE CALIFORNIA BUSINESS AND PROFESSIONS ACT.
11. ALL CONSTRUCTION SHALL BE IN COMPLETE COMPLIANCE WITH ALL RECOMMENDATIONS AND REQUIREMENTS AS SET FORTH IN THE GEOTECHNICAL ENGINEERING REPORT, TITLED "LAGUNA LAKE DOG PARK IMPROVEMENTS 504 MADONNA ROAD SAN LUIS OBISPO, CA DATED AUGUST 4, 2023.
12. NO CONSTRUCTION SHALL BE STARTED WITHOUT PLANS APPROVED BY THE CITY. THE CITY SHALL BE NOTIFIED AT LEAST 48 HOURS PRIOR TO STARTING OF CONSTRUCTION. ANY CONSTRUCTION DONE WITHOUT APPROVED PLANS OR PRIOR NOTIFICATION TO THE CITY WILL BE REJECTED AND WILL BE AT THE CONTRACTOR'S RISK.
13. SOILS TESTS SHALL BE DONE IN ACCORDANCE WITH THE CITY OF SAN LUIS OBISPO STANDARDS AND SPECIFICATIONS. ALL TESTS MUST BE MADE WITHIN 15 DAYS PRIOR TO THE PLACING OF MATERIAL. THE TEST RESULTS SHALL CLEARLY INDICATE THE LOCATION AND SOURCE OF THE MATERIAL.
14. COMPACTION TESTS SHALL BE MADE ON SUBGRADE MATERIAL AND MATERIAL AS SPECIFIED BY THE SOILS ENGINEER AND CITY STANDARDS. SAID TESTS SHALL BE MADE PRIOR TO THE PLACING OF THE NEXT MATERIAL. COMPACTION REPORTS TO BE PROVIDED TO THE ENGINEER OF RECORD.
15. SITE SOILS WITHIN FLATWORK AREAS SHALL BE EXCAVATED AS RECOMMENDED IN THE GEOTECHNICAL REPORT "LAGUNA LAKE DOG PARK IMPROVEMENTS, 504 MADONNA ROAD, SAN LUIS OBISPO, CALIFORNIA". THE EXPOSED SURFACES SHALL THEN BE SCARIFIED, MOISTURE CONDITIONED, AND RECOMPACTED.
16. ALL UTILITY COMPANIES SHALL BE NOTIFIED PRIOR TO THE START OF CONSTRUCTION.
17. CONSTRUCTION ACTIVITY ON-SITE SHALL BE LIMITED TO THE HOURS OF 7:00AM TO 4:00PM MONDAY THROUGH FRIDAY, AND EXCLUDING HOLIDAYS.
18. DESIGNS OF ALL FOUNDATIONS, ROADWAYS, CURBS, AND OTHER STRUCTURES SHALL BE REVIEWED BY A GEOTECHNICAL ENGINEER TO ENSURE THAT THEY ARE COMPATIBLE WITH THE SOILS PROPERTIES AND CONDITIONS ON THE PROJECT SITE.
19. ALL WORK LOCATED WITHIN THE PUBLIC RIGHT-OF-WAY OR WITHIN THE JURISDICTION OF THE CITY UTILITIES AND PUBLIC WORKS DEPARTMENTS SHALL COMPLY WITH THE MOST CURRENT EDITION OF THE ENGINEERING STANDARD AND STANDARD SPECIFICATIONS (ADOPTED AUGUST 2020).
20. PARKING LOT STRIPING SHALL BE INSTALLED IN ACCORDANCE WITH THE PARKING AND DRIVEWAY STANDARDS AND CITY ENGINEERING STANDARD #2250.
21. ALL SURFACE AND SUBSURFACE DRAINAGE SYSTEMS DESIGNED AT LESS THAN 2% FINAL GRADIENTS CERTIFIED BY A LICENSED SURVEYOR OR ENGINEER PRIOR TO FINAL INSPECTION APPROVALS.

CONSTRUCTION NOTES

1. CONTRACTOR SHALL INVESTIGATE THE SITE DURING CLEARING, DEMOLITION AND EXCAVATION WORK. ANY EXISTING HAZARD SUCH AS CESSPOOLS, CISTERNS, FOUNDATIONS OR LARGE DEPOSITS OF ORGANIC MATERIAL, ETC. IF ANY SUCH HAZARDS ARE FOUND, THE OWNER AND ENGINEER SHALL BE NOTIFIED. ALL EXISTING SURFACE STRUCTURES, SUCH AS TANKS, PIPES, ETC., AND ANY BURIED MATERIAL SPECIFIED IN THE PLANS FOR REMOVAL FROM THE SITE SHALL BE DISPOSED OF AT A LICENSED DISPOSAL FACILITY.
 2. CONTRACTOR SHALL PROVIDE A MIN. OF 48 HOURS WRITTEN NOTICE TO THE PROJECT REPRESENTATIVE AND SURVEYOR WHEN REQUESTING SURVEY STAKES.
 3. ANY SECTIONS OF DAMAGED OR DISPLACED CURB, GUTTER & SIDEWALK, OR DRIVEWAY APPROACH SHALL BE REPAIRED OR REPLACED TO THE SATISFACTION OF THE ENGINEER. NEW CURB, GUTTER, SIDEWALK, UTILITY ABANDONMENTS, AND NEW UTILITIES SHALL COMPLY WITH THE LATEST CITY ENGINEERING STANDARDS.
 4. A COMPACTION REPORT SHALL BE PROVIDED FROM A LICENSED SOILS ENGINEER STATING THAT THE BASE AND SUBGRADE WERE PREPARED IN ACCORDANCE WITH THE PROJECT SOILS REPORT OR THE CITY PARKING AND DRIVEWAY STANDARDS. PER THE GEOTECHNICAL ENGINEER'S RECOMMENDATION, NON-VEHICULAR AREAS SHALL BE 90% COMPACTION AND VEHICULAR AREAS SHALL BE 95% COMPACTION.
 5. A LICENSED LAND SURVEYOR SHALL CERTIFY SEWER LATERALS WITH A SLOPE NOT LESS THAN 1" PER FOOT OR 1% AT TIME OF INSTALLATION. SURVEYORS FIELD REPORT SHALL INCLUDE SPOT ELEVATIONS VERIFIED AT NOT LESS THAN 10' INTERVALS AND PROVIDED TO THE BUILDING INSPECTOR AT OR BEFORE THE SEWER LATERAL INSPECTION.
 6. THE ELEVATION OF THE FOUNDATION FORMS SHALL BE CERTIFIED BY A LICENSED SURVEYOR OR ENGINEER FOR THE APPROVED BUILDING PLANS AND CITY ORDINANCES PRIOR TO FOUNDATION INSPECTION APPROVALS.
CUT: 2.500 CU. YDS.
FILL: 580 CU. YDS.
NET: 1.950 CU. YDS.
- QUANTITY ESTIMATES SHOWN ON THIS PLAN ARE TO BE USED FOR BONDING AND PERMIT PURPOSES ONLY. IT IS THE RESPONSIBILITY OF THE CONTRACTOR TO VERIFY ACTUAL QUANTITIES FOR THE PURPOSES OF CONSTRUCTION & BIDDING. THESE QUANTITIES DO NOT ASSUME ANY LOSSES DUE TO SHRINKAGE, DIRT REMOVAL DUE TO UNSUITABLE SUBGRADE MATERIAL OR REUSE OF EXISTING ASPHALT ON-SITE.

GRADING NOTES

1. IF EXCAVATIONS ENCOUNTER SIGNIFICANT PALEONTOLOGICAL, RESOURCES, ARCHAEOLOGICAL RESOURCES, OR CULTURAL MATERIAL, THEN CONSTRUCTION ACTIVITIES THAT MAY AFFECT THEM SHALL BE STOPPED IMMEDIATELY. THE EXTENT OF THE RESOURCE IS DETERMINED AND THE COMMUNITY DEVELOPMENT DIRECTOR APPROVES APPROPRIATE PROTECTIVE MEASURES. THE COMMUNITY DEVELOPMENT DIRECTOR SHALL BE NOTIFIED OF THE EXTENT AND LOCATION OF DISCOVERED MATERIALS SO THAT A QUALIFIED ARCHAEOLOGIST MAY RECORD THEM.
2. IF PRE-HISTORIC NATIVE AMERICAN ARTIFACTS ARE ENCOUNTERED, A NATIVE AMERICAN MONITOR SHOULD BE CALLED INTO WORK WITH THE ARCHAEOLOGIST TO DOCUMENT AND REMOVE THE ITEMS. DISPOSITION OF ARTIFACTS SHALL COMPLY WITH STATE AND FEDERAL LAWS.

APPLICABLE CODES:

CALTRANS STANDARD PLANS - 2022
CBC - 2022 California Building Code
CPC - 2022 California Plumbing Code
CBC - 2022 Green Building Code
CFC - 2022 California Fire Code

SWPPP AND EROSION CONTROL

1. CONTRACTOR SHALL PREPARE SWPPP AND OBTAIN WIDOW NUMBER FOR PROJECT. SWPPP SHALL BE A PART OF THE DEFERRED SUBMITTAL PACKAGE.
2. EROSION CONTROL MEASURES FOR WIND, WATER, MATERIAL STOCKPILES, AND TRACKING SHALL BE IMPLEMENTED ON ALL PROJECTS AT ALL TIMES AND SHALL INCLUDE SOURCE CONTROL, INCLUDING PROTECTION OF STOCKPILES, PROTECTION OF SLOPES, PROTECTION OF ALL DISTURBED AREAS, PROTECTION OF ACCESSSES, AND PERIMETER CONTAINMENT MEASURES. EROSION CONTROL SHALL BE PLACED PRIOR TO THE COMMENCEMENT OF GRADING AND SITE DISTURBANCE ACTIVITIES UNLESS THE PUBLIC WORKS DEPARTMENT DETERMINES TEMPORARY MEASURES TO BE UNNECESSARY BASED UPON LOCATION, SITE CHARACTERISTICS OR TIME OF YEAR. THE INTENT OF EROSION CONTROL MEASURES SHALL BE TO KEEP ALL GENERATED SEDIMENTS FROM ENTERING A SWALE, DRAINAGE WAY, WATERCOURSE, ATMOSPHERE, OR MIGRATE ONTO ADJACENT PROPERTIES OR ONTO THE PUBLIC RIGHT-OF-WAY.
3. SITE INSPECTIONS AND APPROPRIATE MAINTENANCE OF ALL EROSION CONTROL MEASURES/DEVICES SHALL BE CONDUCTED AND DOCUMENTED AT ALL TIMES DURING CONSTRUCTION AND ESPECIALLY PRIOR TO, DURING, AND AFTER RAIN EVENTS.
4. THE CONTRACTOR SHALL BE RESPONSIBLE FOR THE PLACEMENT AND MAINTENANCE OF ALL EROSION CONTROL MEASURES/DEVICES AS SPECIFIED BY THE APPROVED PLAN UNTIL SUCH TIME THAT THE PROJECT IS ACCEPTED AS COMPLETE BY THE PUBLIC WORKS DEPARTMENT OR UNTIL RELEASED FROM THE CONDITIONS OF APPROVAL. EROSION CONTROL MEASURES/DEVICES MAY BE RELOCATED, DELETED OR ADDITIONAL MEASURES/DEVICES MAY BE REQUIRED DEPENDING ON THE ACTUAL CONDITIONS ENCOUNTERED DURING CONSTRUCTION. ADDITIONAL EROSION CONTROL MEASURES/DEVICES SHALL BE PLACED AT THE DISCRETION OF THE ENGINEER OF WORK, CITY INSPECTOR, SWPPP MONITOR, OR RWCD INSPECTOR. GUIDELINES FOR DETERMINING APPROPRIATE EROSION CONTROL DEVICES SHALL BE INCLUDED IN THE PLANS WITH ADDITIONAL MEASURES/DEVICES NOTED FROM THE APPENDIX OF THE PUBLIC IMPROVEMENT STANDARDS.
5. EROSION CONTROL DEVICES SHALL BE THE FIRST ORDER OF WORK AND SHALL BE IN PLACE AT ALL TIMES DURING CONSTRUCTION. ADDITIONAL MEASURES/DEVICES SHALL BE AVAILABLE DURING THE RAINY SEASON (BETWEEN OCTOBER 15 AND APRIL 15) OR ANYTIME WHEN THE RAIN PROBABILITY EXCEEDS 30%. THESE MEASURES/DEVICES SHALL BE AVAILABLE, INSTALLED, AND/OR APPLIED AFTER EACH AREA IS GRADED AND NO LATER THAN FIVE (5) WORKING DAYS AFTER COMPLETION OF EACH AREA.

6. THE CONTRACTOR AND QSP SHALL BE RESPONSIBLE TO REVIEW THE PROJECT SITE PRIOR TO OCTOBER 15 (RAINY SEASON) AND TO COORDINATE AN IMPLEMENTATION PLAN FOR WET WEATHER EROSION CONTROL DEVICES. A LOCALLY BASED STANDBY CROWD FOR EMERGENCY WORK SHALL BE AVAILABLE AT ALL TIMES DURING THE RAINY SEASON (OCTOBER 15 THROUGH APRIL 15). NECESSARY MATERIALS SHALL BE AVAILABLE AND STOCK-PILED AT CONVENIENT LOCATIONS TO FACILITATE RAPID CONSTRUCTION OR MAINTENANCE OF TEMPORARY DEVICES WHEN RAIN IS IMMINENT.
7. PERMANENT EROSION CONTROL SHALL BE PLACED AND ESTABLISHED WITH 10% COVERAGE ON ALL DISTURBED SURFACES OTHER THAN PAVED OR GRAVEL SURFACES. PRIOR TO FINAL INSPECTION, PERMANENT EROSION CONTROL SHALL BE FULLY ESTABLISHED PRIOR TO FINAL ACCEPTANCE. TEMPORARY EROSION CONTROL MEASURES SHALL REMAIN IN PLACE UNTIL PERMANENT MEASURES ARE ESTABLISHED.
8. EFFECTIVE SOIL COVER SHALL BE IMPLEMENTED FOR AREAS SCHEDULED TO BE INACTIVE FOR AT LEAST 14 DAYS AND ALL FINISHED SLOPES, OPEN SPACE, UTILITY BACKFILL, AND COMPLETED LOTS.
9. THE USE OF PLASTIC MATERIALS SHALL BE LIMITED WHEN ALTERNATIVES EXIST.
10. EFFECTIVE WIND EROSION CONTROL SHALL BE IMPLEMENTED.
11. AFTER EACH RAIN STORM, REMOVE ALL SILT AND DEBRIS FROM EROSION & SEDIMENT CONTROL MEASURES, INCLUDING BASINS, SEDIMENT BASINS, SEDIMENT TRAPS, AND DIVERSION EARTH SWALES.
12. ALL EQUIPMENT/VEHICLES SHALL BE FUELED, MAINTAINED AND STORED IN THE DESIGNATED STAGING AREA FITTED WITH APPROPRIATE BMPs.
13. STORAGE AREAS FOR MATERIALS, WASTE, WATER STORAGE, WATER TRANSFER, AND DUST CONTROL AND COMPACTION PRACTICES SHALL BE LOCATED WITHIN THE DESIGNATED STAGING AREAS.
14. STOCKPILED CONSTRUCTION MATERIALS NOT BEING ACTIVELY USED SHALL BE COVERED AND BERMED PRIOR TO QUALIFYING RAIN EVENT.
15. TRACKING ONTO THE PUBLIC STREET SHALL BE MINIMIZED. THE ADJUTING STREETS SHALL BE CLEANED BY SWEEPING TO REMOVE DIRT, DUST, MUD AND CONSTRUCTION DEBRIS AT THE END OF EACH DAY.
16. TEMPORARY EROSION CONTROL MEASURES SHALL BE REMOVED WHEN PERMANENT IMPROVEMENTS, PLANTINGS, AND FACILITIES ARE IN PLACE. TEMPORARY MEASURES SHALL BE REMOVED PRIOR TO FINAL INSPECTION.
17. MINIMIZE THE AMOUNT OF DISTURBED/EXPOSED AREA WHERE POSSIBLE. DISTURB ONLY AREAS NECESSARY TO COMPLETE THE WORK SHOWN IN THESE PLANS.
18. ALL PREVENTION AND CLEAN UP MEASURES SHOULD BE CONDUCTED IN ACCORDANCE WITH CITY OF SAN LUIS OBISPO ORDINANCES, AS WELL AS STATE AND FEDERAL REGULATIONS. WASTE MATERIALS SHALL BE DISPOSED OF IN A LEGAL MANNER.
19. ALL DISCHARGES OF STORM WATER MUST COMPLY WITH THE LAWFUL REQUIREMENTS OF THE CITY OF SAN LUIS OBISPO AND OTHER LOCAL AGENCIES REGARDING THE DISCHARGES OF STORM WATER TO STORM DRAIN SYSTEMS.

THIS PLAN DOES NOT COVER THE REMOVAL OF HAZARDOUS OR TOXIC WASTE. IN THE EVENT OF A DISCHARGE OR RELEASE OF A REPORTABLE QUANTITY OF TOXIC WASTE, CONSTRUCTION ACTIVITIES SHOULD BE STOPPED UNTIL THE SPILL CAN BE ASSESSED AND A MITIGATION REPORT PREPARED BY A QUALIFIED ENVIRONMENTAL CONSULTANT, AND IF NECESSARY, REVIEWED BY THE CITY OF SAN LUIS OBISPO AND ANY OTHER AGENCY HAVING JURISDICTION.

AIR QUALITY MITIGATION NOTES

THE FOLLOWING DUST MITIGATION MEASURES ARE REQUIRED AT THE START AND MAINTAINED THROUGHOUT THE DURATION OF THE CONSTRUCTION OR GRADING ACTIVITY:

1. CONSTRUCTION VEHICLE SPEED AT THE WORK SITE MUST BE LIMITED TO FIFTEEN (15) MILES PER HOUR OR LESS;
2. PRIOR TO ANY GROUND DISTURBANCE, SUFFICIENT WATER MUST BE APPLIED TO THE AREA TO BE DISTURBED TO PREVENT VISIBLE EMISSIONS FROM CROSSING THE PROPERTY LINE;
3. AREAS TO BE GRADED OR EXCAVATED MUST BE KEPT ADEQUATELY WETTED TO PREVENT VISIBLE EMISSIONS FROM CROSSING THE PROPERTY LINE;
4. STORAGE PILES MUST BE KEPT ADEQUATELY WETTED, TREATED WITH A CHEMICAL DUST SUPPRESSANT, OR COVERED WHEN MATERIAL IS NOT BEING ADDED TO OR REMOVED FROM THE PILE;
5. EQUIPMENT MUST BE WASHED DOWN BEFORE MOVING FROM THE PROPERTY ONTO A PAVED PUBLIC ROAD;
6. VISIBLE TRACK-OUT ON THE PAVED PUBLIC ROAD MUST BE CLEANED USING WET SWEEPING OR HEPA FILTER EQUIPPED VACUUM DEVICE AT THE END OF EACH DAY;
7. NO PERSON SHALL ENGAGE IN ANY CONSTRUCTION OR GRADING OPERATION ON PROPERTY WHERE THE AREA TO BE DISTURBED IS GREATER THAN ONE (1) ACRE UNLESS A GEOLOGIC EVALUATION HAS OCCURRED ON SITE. IF ASBESTOS CONTAMINATED MATERIAL IS IDENTIFIED ON SITE, AN ASBESTOS DUST MITIGATION PLAN WILL BE REQUIRED TO BE SUBMITTED TO AND APPROVED BY THE DISTRICT BEFORE THE START OF ANY CONSTRUCTION OR GRADING ACTIVITY, AND THE PROVISIONS OF THAT DUST MITIGATION PLAN MUST BE IMPLEMENTED AT THE BEGINNING AND MAINTAINED THROUGHOUT THE DURATION OF THE CONSTRUCTION OR GRADING ACTIVITY; AND
8. A PRE-CONSTRUCTION MEETING SHALL BE REQUIRED TO INFORM CONSTRUCTION CREW OF SITE REQUIREMENTS.
9. ALL MATERIAL EXCAVATED OR GRADED SHALL BE SUFFICIENTLY WATERED TO PREVENT EXCESSIVE AMOUNTS OF DUST DURING THE TIME PERIOD IN WHICH GRADING WILL OCCUR. WATERING SHALL OCCUR USING HOPPORTABLE WATER, OR OTHERWISE AS NEEDED TO PREVENT EXCESSIVE AMOUNTS OF DUST.
10. ALL CLEARING, GRADING EARTH-MOVING, OR EXCAVATING ACTIVITIES SHALL CEASE DURING PERIODS OF HIGH WINDS (GREATER THAN 15MPH AVERAGED OVER ONE HOUR) TO PREVENT EXCESSIVE AMOUNTS OF DUST.
11. IF SOIL MATERIALS ARE TRANSPORTED OFF-SITE, TRUCKS SHALL BE COVERED OR HAVE AT LEAST TWO FEET OF FREEBOARD TO MINIMIZE DUST AND PREVENT LOOSE SOIL FROM SPILLING OUT.

12. ALL DISTURBED AREAS NOT SUBJECT TO REVEGETATION SHALL BE STABILIZED USING APPROVED LANDSCAPED PLANTING, CHEMICAL SOIL BINDERS, JUTE NETTING OR OTHER METHODS APPROVED IN ADVANCE BY THE ENGINEER OF RECORD.

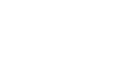
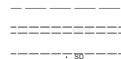
TREE PROTECTION NOTES

1. PROTECTION FENCES
INSTALL A 4-FOOT TALL FENCE AROUND DRIP-LINE OF TREES TO BE SAVED, OR AS DIRECTED BY THE ENGINEER, BEFORE ANY WORK STARTS ON THE SITE. THE TREE PROTECTION FENCE MUST BE ORANGE SAFETY FENCING SECURED WITH STEEL T-POSTS SET AT 8 FEET ON CENTER.
TREE PROTECTION FENCES MUST:
1. BE INSTALLED BEFORE ANY WORK BEGINS
2. REMAIN IN PLACE
3. CONTINUALLY MAINTAINED
4. REMOVED AS THE LAST ITEM OF CONTRACT WORK
2. PRUNING
PRUNING OF TREE LIMBS WILL ONLY BE ALLOWED IF APPROVED BY THE ENGINEER. TREE PRUNING MUST BE DONE BY A CERTIFIED ARBORIST PER INTERNATIONAL SOCIETY OF ARBORICULTURE (ISA) STANDARDS
3. PARKING AND STORAGE OF BUILDING MATERIALS
DO NOT:
1. PARK VEHICLES
2. PARK CONSTRUCTION EQUIPMENT
3. STOCKPILE
WITHIN THE DRIP-LINE OF TREES TO BE SAVED.
4. DUMPING
DO NOT DEPOSIT:
1. WATER
2. CONSTRUCTION MATERIALS
WITHIN 20 FEET OF DRIP-LINE OF TREES TO BE SAVED.
5. HERBICIDE USE
DO NOT USE HERBICIDE INCLUDING PRE AND POST EMERGENT WITHIN 20 FEET OF DRIP-LINE OF TREES TO BE SAVED
6. TRUNK PROTECTION
DO NOT ATTACH ANYTHING TO ANY PORTION OF TREES TO BE SAVED. IF YOU WOUND A TREE TO BE SAVED, IMMEDIATELY EXPAND TREE PROTECTIVE FENCING AND TREAT TREE WOUND TO THE SATISFACTION OF THE ENGINEER. IF SEVERE TREE DAMAGE OCCURS YOU MAY BE FINED IN COMPLIANCE WITH THE CITY'S TREE ORDINANCE.
7. EXCAVATION, GRADING, TRENCHING AND BORING
NO TRENCHING OF ANY DEPTH WILL BE ALLOWED WITHIN THE DRIP-LINE OF TREES OR SHRUBS TO BE SAVED, UNLESS APPROVED BY THE ENGINEER. IF YOU PLAN TO TRENCH WITHIN 20 FEET OF THE DRIP-LINE OF TREE TO BE SAVED, LAY OUT TRENCH OR TRENCH WITH CHALK OR PAINT, AND NOTIFY THE ENGINEER FOR REVIEW AND APPROVAL BEFORE TRENCHING WORK BEGINS. IF THE ENGINEER APPROVES TRENCHING WITHIN THE DRIP-LINE OF TREES OR SHRUBS TO BE SAVED, TRENCHING EXCAVATION MUST BE DONE BY HAND. TRENCHING OUTSIDE THE DRIP-LINE OF TREES TO BE SAVED AND WITHIN 20 FEET OF DRIP-LINE OF TREES TO BE SAVED IS NOT REQUIRED TO BE COMPLETED BY HAND.
- NO GRADING CUTS OR FILLS WILL BE ALLOWED WITHIN THE DRIP-LINE OF TREES TO BE SAVED, UNLESS APPROVED BY THE ENGINEER.
- DURING EXCAVATION IF ANY ROOTS ARE ENCOUNTERED LESS THAN 1-INCH IN DIAMETER, THE ROOT MAY BE CUT BY HAND LEAVING A CLEAN CUT.
- DURING EXCAVATION IF ANY ROOTS ARE ENCOUNTERED GREATER THAN 1-INCH IN DIAMETER, THE ROOT MUST BE PROTECTED FROM:
1. SCARIFYING
2. DRYING
3. THEN TUNNELED UNDER
IF THE ROOT CANNOT BE PROTECTED, YOU MUST SCHEDULE THE ENGINEER AND CITY ARBORIST TO REVIEW EXCAVATION AND GIVE DIRECTION.
- SHADE ROOTS FROM DIRECT SUNLIGHT WHEN EXPOSED IN OPEN TRENCH. THE ENGINEER MUST REVIEW PRUNED OR CUT ROOTS PRIOR TO BACKFILLING TRENCH. TRENCH MUST BE BACKFILLED WITHIN 24 HOURS OF ENCOUNTERING ROOTS.
- ALL DIRECTIONAL BORING WITHIN DRIP-LINE TREES TO BE SAVED MUST MAINTAIN A MINIMUM DEPTH OF 5 FEET.
- IF SEVERE TREE OR ROOT DAMAGE OCCURS YOU MAY BE FINED IN COMPLIANCE WITH THE CITY'S TREE ORDINANCE.
8. TREE REMOVALS
TREES NOT SHOWN AND IDENTIFIED ON THE PLANS TO BE REMOVED, BUT ARE REQUIRED TO BE REMOVED IN ORDER TO COMPLETE THE WORK, ARE SUBJECT TO THE CITY'S TREE REMOVAL POLICIES AND PROCEDURES. COORDINATE TREE REMOVAL POLICY COMPLIANCE WITH ENGINEER.

LEGEND

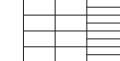
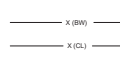
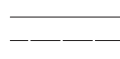
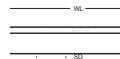
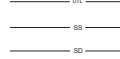
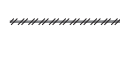
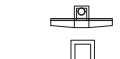
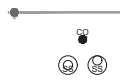
EXISTING

0.50% 2:1
EG+ 225.45



PROPOSED

0.50% 2:1
FG+ 225.45



DESCRIPTION

SLOPE

SPOT ELEVATIONS

FIRE HYDRANT

SEWER CLEANOUT

SEWER MANHOLE

SEWER LATERAL

STORM DRAIN MANHOLE

STORM DRAIN CURB INLET

STORM DRAIN CATCH BASIN

WATER SERVICE

WATER SERVICE MAINFOLD

ABANDON UTILITY

EXISTING EDGE OF PAVEMENT

EXISTING IRRIGATION LINE

UNDERGROUND CABLE

TELEVISION LINE

UNDERGROUND ELECTRICAL LINE

UNDERGROUND GAS LINE

UNDERGROUND TELECOMMUNICATIONS LINE

UNDERGROUND UTILITY LINE

GRAVITY SEWER LINE

STORM DRAIN

WATER LINE

SEWER FORCE MAIN

STORM DRAIN

RIGHT OF WAY

EASEMENT

CENTERLINE

BARBED WIRE FENCE

CHAIN LINK FENCE

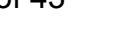
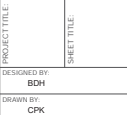
WOOD FENCE



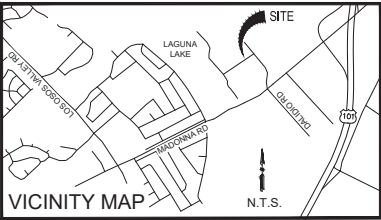
PROJECT ENGINEER

PLANS APPROVAL DATE

04- AND 05-2023 (04-2023) (05-2023)
CITY OF SAN LUIS OBISPO
PUBLIC WORKS DEPARTMENT
610 CLAYTON COURT
SAN LUIS OBISPO, CA 93401
www.sanluisobispo.gov



SHEET LAYOUT AND SURVEY CONTROL



SURVEY NOTES

1. THE HORIZONTAL DATUM FOR THIS SURVEY IS THE NORTH AMERICAN DATUM OF 1983, 1982 ADJUSTMENT (NAD83/1992), EPOCH DATE OF 1991.35 ACCORDING TO THE CITY OF SAN LUIS OBISPO HORIZONTAL CONTROL NETWORK, JANUARY 2007 REVISION.
2. THE PROJECTION USED IS THE CALIFORNIA COORDINATE SYSTEM OF 1983 (CCS83), ZONE 5 PROJECTION ACCORDING TO THE CITY OF SAN LUIS OBISPO'S HORIZONTAL CONTROL NETWORK, JANUARY 2007 REVISION.
3. THIS SURVEY TIED TO TWO CITY OF SAN LUIS OBISPO HORIZONTAL CONTROL POINT STATIONS. THOSE STATIONS ARE DESIGNATED '8118', HAVING A PUBLISHED POSITION OF: NORTHING 2291624.331', EASTING 5759997.892', AND '8120', HAVING A PUBLISHED POSITION OF: NORTHING 2292760.657', EASTING 5759556.922'. THE RECORD BEARING FROM HERE BEARINGS SHOWN HEREON ARE REFERENCED TO CCS83, ZONE 5 GRID NORTH ACCORDING TO THE CITY OF SAN LUIS OBISPO'S HORIZONTAL CONTROL NETWORK, JANUARY 2007 REVISION.
4. ALL MEASUREMENTS LISTED, SHOWN AND REPRESENTED HEREON ARE BASED ON GRID DISTANCES OF THE CALIFORNIA COORDINATE SYSTEM OF 1983 ZONE 5 PROJECTION ACCORDING TO THE CITY OF SAN LUIS OBISPO'S HORIZONTAL CONTROL NETWORK, JANUARY 2007 REVISION. THE COMBINED SCALE FACTOR FOR THE PROJECT IS 0.999961444. THIS SCALE FACTOR WAS CALCULATED USING AN ELEVATION OF 130.53 FEET FOR PT. NO. 106 CITY VERTICAL BENCHMARK SYSTEM, JANUARY 2007 REVISION, HAVING A PUBLISHED ELEVATION OF 130.52'.
5. THE CONVERGENCE ANGLE IS: HERE NO. 327'.
6. THE ORTHOMETRIC HEIGHTS (ELEVATIONS) ARE BASED ON THE NORTH AMERICAN VERTICAL DATUM OF 1988 (NAVDS88) ACCORDING TO THE CITY OF SAN LUIS OBISPO BENCHMARK SYSTEM, JANUARY 2007 REVISION. THIS SURVEY TIED TO THE POINT DESIGNATED AS PT. NO 327 OF THE CITY OF SAN LUIS OBISPO BENCHMARK SYSTEM, JANUARY 2007 REVISION, HAVING A PUBLISHED ELEVATION OF 130.52'.
7. THE CONTOUR INTERVAL IS 1 FOOT.
8. ORTHOPHOTOGRAPHY PRODUCED BY WALLACE GROUP. PHOTOGRAPHY DATED: 10/26/2022.
9. UNDERGROUND UTILITY LOCATIONS ARE PLOTTED BASED ON ABOVE GROUND PAINT MARKS BY OTHERS. ABOVE GROUND SURFACE STRUCTURES. ACTUAL LOCATION MAY DIFFER. ADDITIONAL UNDERGROUND UTILITY LINES MAY EXIST. FOR INFORMATION REGARDING UTILITY LOCATION, SIZE, DEPTH, CONDITION, AND CAPACITY CONTACT UTILITY OR MUNICIPAL/PUBLIC SERVICE FACILITY.
10. UNDERGROUND PIPE SIZES ARE BASED ON VISUAL OBSERVATIONS MADE FROM THE SURFACE AND ARE APPROXIMATE.
11. THIS IS NOT A BOUNDARY SURVEY. NO BOUNDARY LINES ARE DEPICTED AND NO BOUNDARY EVIDENCE WAS REVIEWED. NO TITLE INFORMATION WAS PROVIDED FOR THIS PROJECT.

SURVEY CONTROL POINTS				
PT. NO.	NORTHING	EASTING	ELEV.	DESC.
100	2293553.06	5760917.49	146.88	SET 5/8 REBAR 'WG CONTROL'
101	2293502.83	5760975.26	144.56	SET 5/8 REBAR 'WG CONTROL'
102	2293588.59	5760762.90	143.40	SET MAG NAIL IN PAINT STRIPE
103	2293206.52	5761126.06	148.30	SET MAG NAIL 'WG CONTROL'
104	2293001.46	5760930.42	139.47	SET MAG NAIL 'WG CONTROL'



SCALE: HORIZ
VERT AS SHOWN
ORIGINAL SCALE IN INCHES
FOR REDUCED PLANS

DATE	REVISIONS DESCRIPTION	APPROVAL	
		DESIGN	CITY



PROJECT ENGINEER

PLANS APPROVAL DATE

612 CLAYTON COURT
SAN LUIS OBISPO, CA 93401
WWW.BOSTONIAN.COM



PROJECT TITLE:
**LAGUNA LAKE DOG PARK
REVITALIZATION**

SHEET TITLE:
SURVEY CONTROL

DESIGNED BY:

DRAWN BY:

CHECKED BY:

APPROVED BY:

DATE: 12/21/2023

CITY SPECIFICATION NO:
200526-01

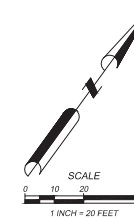
SHEET DES:
SC-1

SHEET NO:
3 OF 31



LEGEND

---	INDEX CONTOUR
- - -	INTERMEDIATE CONTOUR
---	EDGE OF PAVEMENT
---	CHAIN LINK FENCE
---	POLE FENCE
---	STORM DRAIN LINE
---	SANITARY SEWER LINE
---	OVERHEAD UTILITY LINE
---	TRAFFIC STRIPING (SOLID)
---	TRAFFIC STRIPING (DASHED)
○	AREA LIGHT
○	LIGHT STANDARD
○	SANITARY SEWER MANHOLE
○	WATER METER
○	IRRIGATION CONTROL VALVE
○	WATER VALVE
○	FIRE HYDRANT
○	GUY POLE
○	GUY WIRE
○	POLE WITH LIGHT
○	SANITARY SEWER CLEAN OUT
○	STREET SIGN/STATION POST
○	SURVEY CONTROL POINT AND NUMBER
○	BRUSH LINE/DRP LINE
○	TREE WITH DIAMETER NOTED
○	BOULDER
□	BUILDING
□	CONCRETE
□	BRICK
□	BLOCK WALL
□	CONCRETE
□	DRAINAGE INLET
□	TYP.



SCALE: HORIZ VERT AS SHOWN
ORIGINAL SCALE IN INCHES FOR REDUCED PLANS

DATE	REVISIONS	APPROVAL
	DESCRIPTION	DESIGN APPROVAL CITY



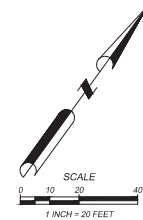
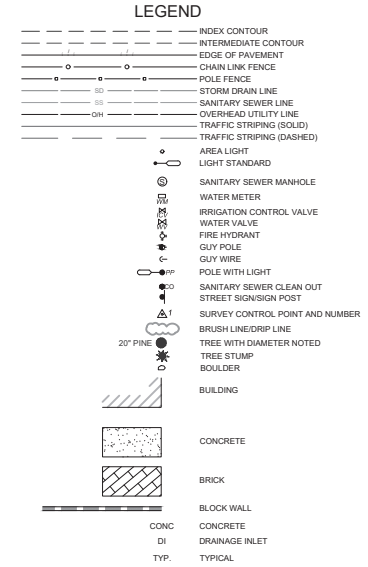
PROJECT ENGINEER

PLANS APPROVAL DATE

CH. AND TRAIL CENTERLINE RECORD
 LAGUNA LAKE DOG PARK
 612 CLAYTON COURT
 SAN LUIS OBISPO, CA 95051
 www.bostrop.com

**LAGUNA LAKE DOG PARK
REVITALIZATION**
SURVEY - EXISTING CONDITIONS

PROJECT TITLE: LAGUNA LAKE DOG PARK REVITALIZATION
 SHEET TITLE: SURVEY - EXISTING CONDITIONS
 DESIGNED BY: [Blank]
 DRAWN BY: [Blank]
 CHECKED BY: [Blank]
 APPROVED BY: [Blank]
 DATE: 12/21/2023
 CITY SPECIFICATION NO: 200526-01
 SHEET DES: **SC-2**
 SHEET NO: **4 OF 31**



SCALE: HORIZ
VERT AS SHOWN
ORIGINAL SCALE IN INCHES
FOR REDUCED PLANS

DATE	REVISIONS	APPROVAL
	DESCRIPTION	DESIGN
		CITY



PROJECT ENGINEER

PLANS APPROVAL DATE

DATE AND TIME OF PLAN APPROVAL:
APPROVED BY:
CITY ENGINEER
CITY OF LOS ANGELES
PUBLIC WORKS DEPARTMENT
WATER DIVISION
612 CLAYTON COURT
SAN LUIS OBISPO, CA 95051
www.sanluisobispo.gov



**LAGUNA LAKE DOG PARK
REVITALIZATION**

SURVEY - EXISTING CONDITIONS

PROJECT TITLE:
DESIGNED BY:

DRAWN BY:

CHECKED BY:

APPROVED BY:

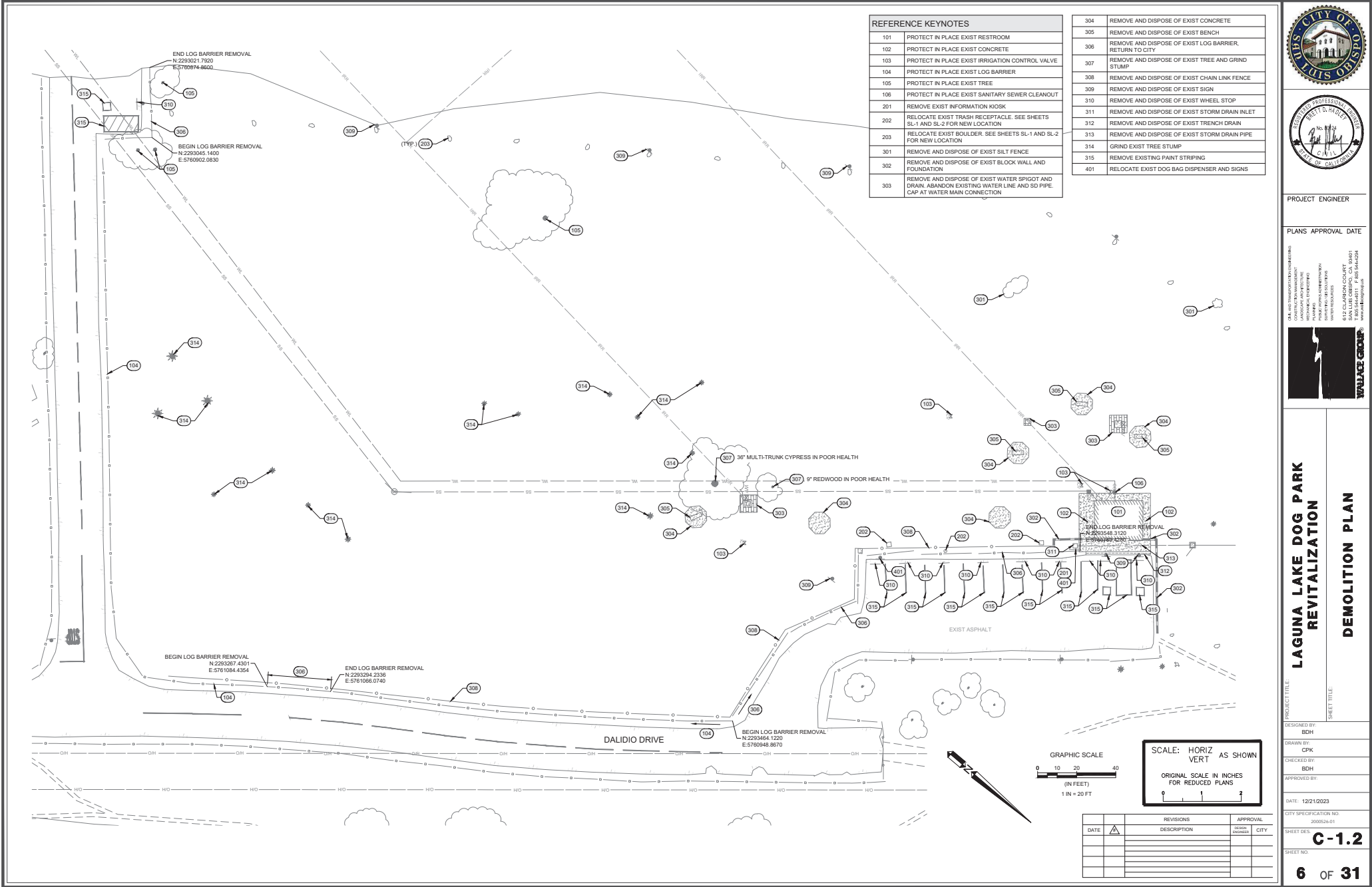
DATE: 12/21/2023

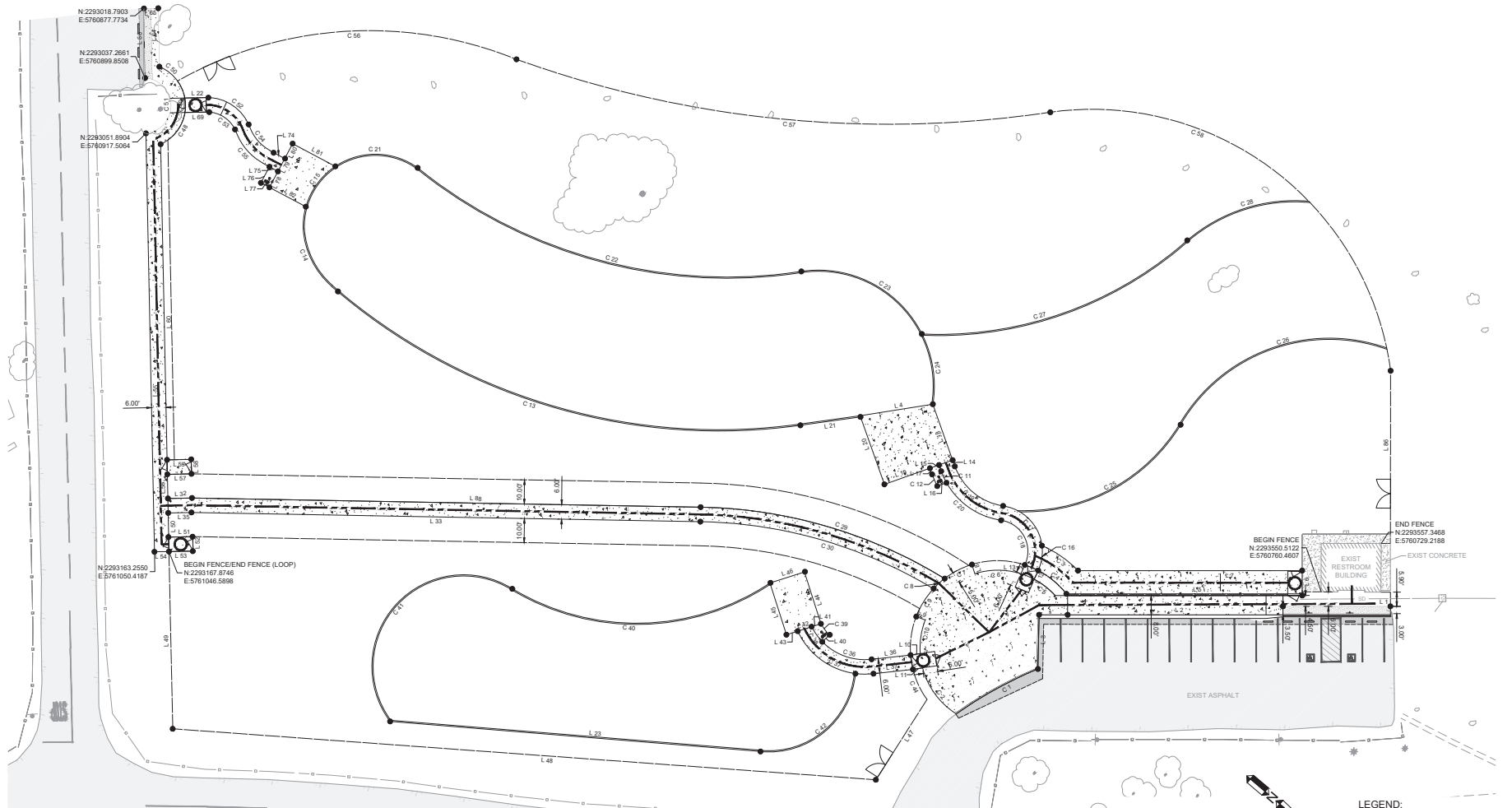
CITY SPECIFICATION NO:
200526-01

SHEET DES:

SHEET NO:

5 OF 31





Curve Table				Curve Table				Curve Table				Curve Table			
Curve #	Length	Radius	Delta	Curve #	Length	Radius	Delta	Curve #	Length	Radius	Delta	Curve #	Length	Radius	Delta
C 1	38.93	174.50	C 15	66.75	30.00	C 29	106.64	200.00	C 52	23.39	19.00
C 2	23.68	32.25	C 16	35.33	19.00	C 30	101.70	194.00	C 53	15.99	13.00
C 3	18.28	46.25	C 17	35.33	19.00	C 36	22.48	24.50	C 54	12.94	18.00
C 4	15.27	36.25	C 18	24.37	13.00	C 37	31.05	30.50	C 55	17.26	24.00
C 5	10.87	32.25	C 19	27.18	25.00	C 38	7.68	24.50	C 56	145.60	162.00
C 6	19.90	32.25	C 20	33.71	31.00	C 39	5.90	20.50	C 57	224.57	455.00
C 7	12.80	36.25	C 21	88.75	30.00	C 40	112.66	100.00	C 58	196.94	124.75
C 8	6.26	36.25	C 22	169.49	204.50	C 41	105.32	38.00				
C 9	13.65	36.25	C 23	90.06	48.00	C 42	56.50	36.00				
C 10	14.20	32.25	C 24	90.06	48.00	C 44	13.67	36.25				
C 11	33.71	31.00	C 25	76.90	75.50	C 48	17.27	17.50				
C 12	5.29	35.00	C 26	98.70	71.50	C 49	6.03	17.50				
C 13	208.86	245.00	C 27	119.51	155.50	C 50	17.44	17.50				
C 14	27.31	34.50	C 28	54.34	88.50	C 51	34.28	11.50				

Line Table			Line Table			Line Table			Line Table			Line Table		
Line #	Length	Direction	Line #	Length	Direction	Line #	Length	Direction	Line #	Length	Direction	Line #	Length	Direction
L 1	44.54	L 14	2.60	L 37	16.45	L 52	6.00	L 74	7.01
L 2	89.22	L 15	2.60	L 40	3.99	L 53	10.01	L 75	7.06
L 3	22.44	L 16	4.05	L 41	4.05	L 54	6.00	L 76	7.53
L 4	30.41	L 17	2.73	L 42	6.05	L 55	173.40	L 77	4.00
L 5	97.73	L 18	24.74	L 43	4.89	L 56	10.00	L 78	20.50
L 6	9.63	L 19	30.00	L 44	22.50	L 57	10.00	L 79	20.50
L 7	92.84	L 20	29.64	L 45	22.50	L 58	6.00	L 80	30.50
L 8	4.01	L 21	25.16	L 46	15.00	L 59	10.00	L 81	30.05
L 9	4.01	L 22	8.83	L 47	39.43	L 60	130.80	L 82	17.08
L 10	4.01	L 32	10.00	L 48	292.12	L 64	24.20	L 86	67.59
L 11	4.02	L 33	210.57	L 49	73.45	L 65	6.00	L 88	210.80
L 12	4.00	L 35	10.00	L 50	10.00	L 66	28.79			
L 13	4.00	L 36	16.26	L 51	10.00	L 69	8.87			



PROJECT ENGINEER

PLANS APPROVAL DATE

DATE AND TIME OF APPROVAL: 12/21/2023
 PROJECT: LAGUNA LAKE DOG PARK REVITALIZATION
 PROJECT LOCATION: 612 CLAYTON COURT, SAN LUIS OBISPO, CA 93401
 PROJECT CONTACT: JEFFREY B. BOWEN, CIVIL ENGINEER
 PROJECT NO.: 200526-01
 www.bowenusa.com



LAGUNA LAKE DOG PARK REVITALIZATION HORIZONTAL CONTROL

PROJECT TITLE: LAGUNA LAKE DOG PARK REVITALIZATION
 SHEET TITLE: HORIZONTAL CONTROL

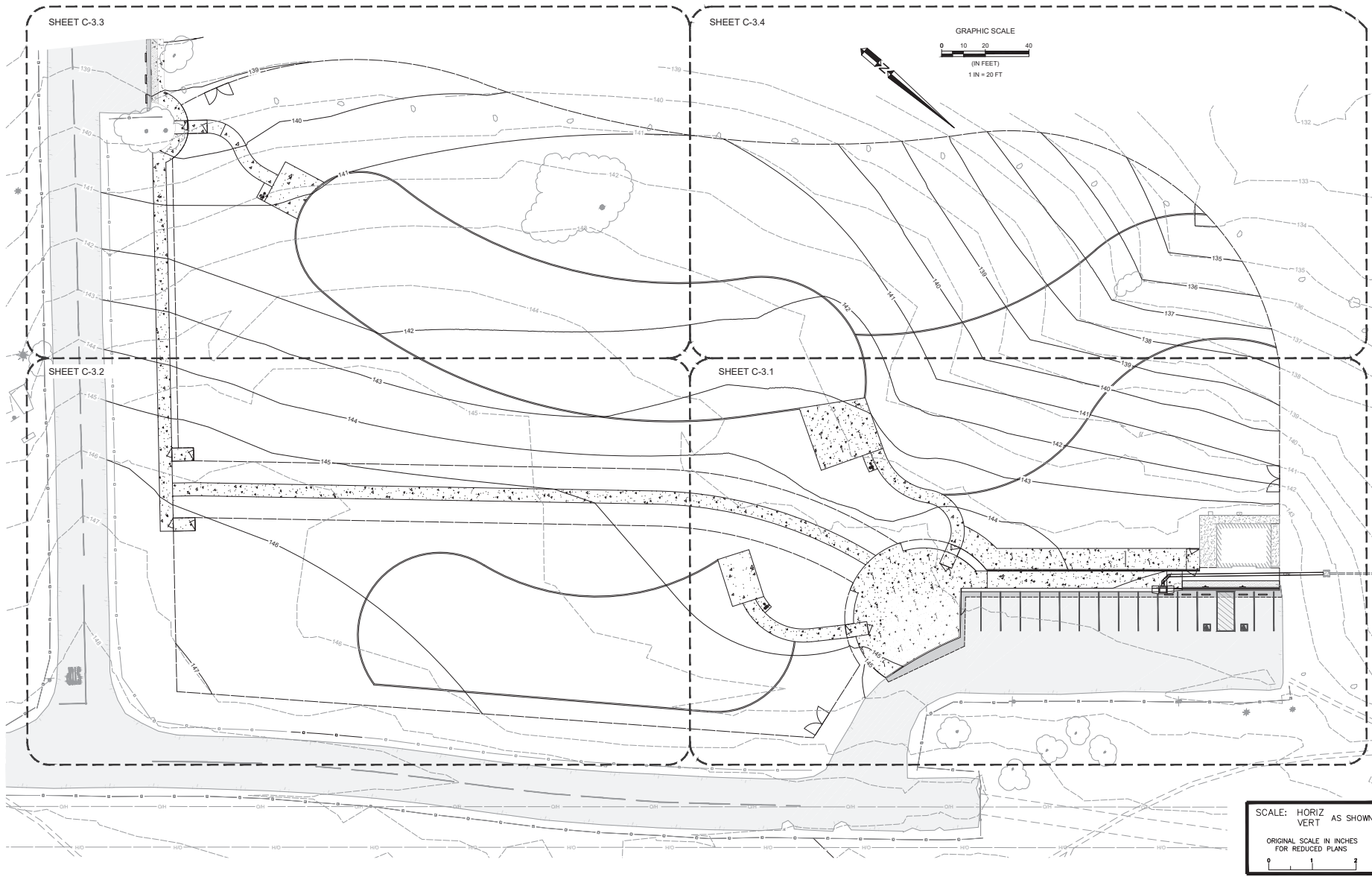
DESIGNED BY: BDH
 DRAWN BY: CPK
 CHECKED BY: BDH
 APPROVED BY:

DATE: 12/21/2023

CITY SPECIFICATION NO: 200526-01

SHEET NO: C-2.0

SHEET NO: 7 OF 31



PROJECT ENGINEER

PLANS APPROVAL DATE

CH. AND TRANSPORTATION ENGINEERING
 LANDSCAPE ARCHITECTURE
 PLANS ENGINEERING
 612 CLAYTON COURT
 SAN LUIS OBISPO, CA 93401
 www.bostgroup.com



LAGUNA LAKE DOG PARK REVITALIZATION OVERALL GRADING PLAN

PROJECT TITLE
 SHEET TITLE

DESIGNED BY: BDH
 DRAWN BY: CPK
 CHECKED BY: BDH
 APPROVED BY:

DATE: 12/21/2023

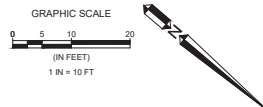
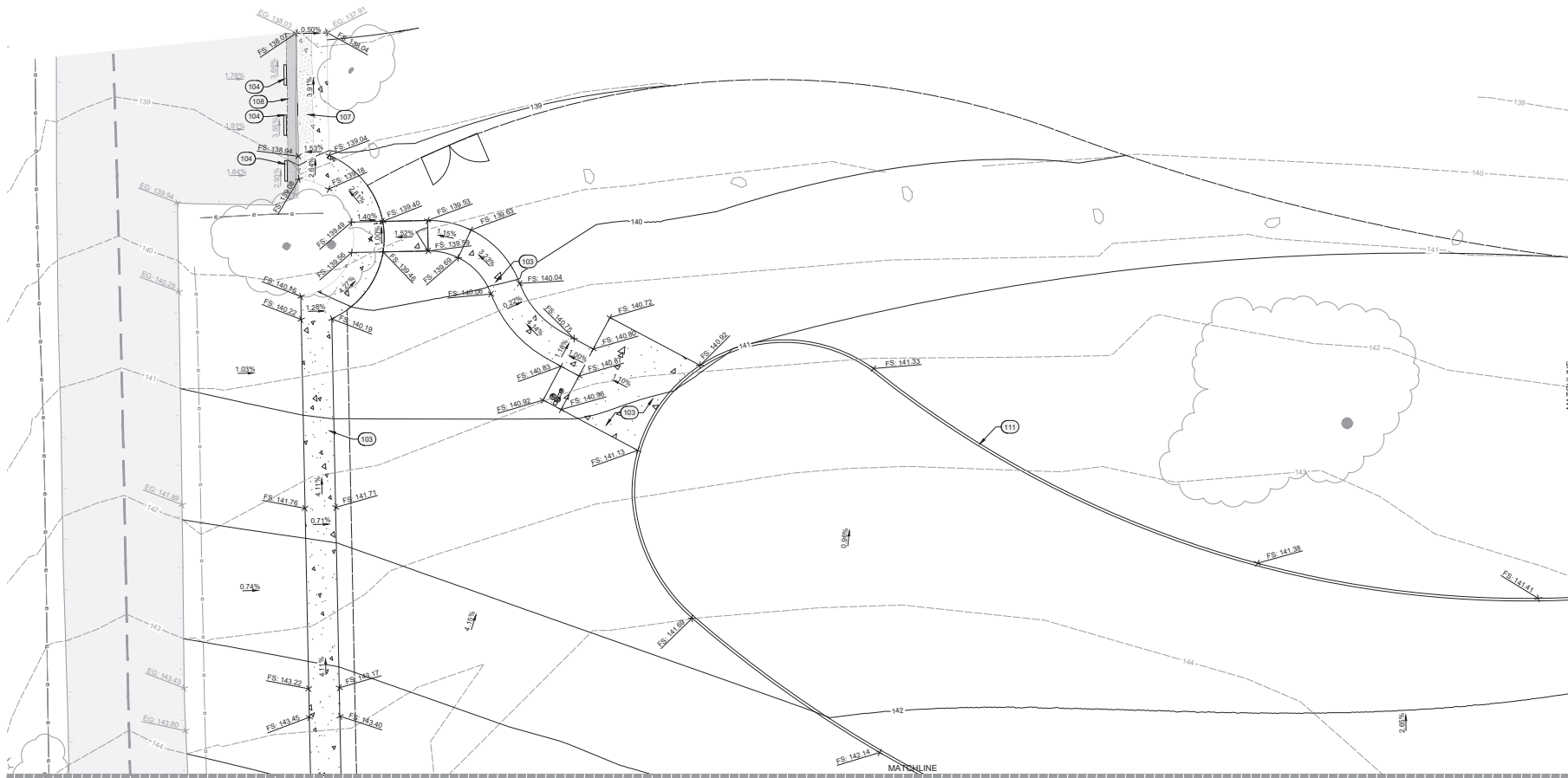
CITY SPECIFICATION NO.
 200526-01

SHEET NO.: **C-3.0**

8 OF 31

DATE	REVISIONS	APPROVAL
	DESCRIPTION	DATE

SCALE: HORIZ VERT AS SHOWN
 ORIGINAL SCALE IN INCHES
 FOR REDUCED PLANS
 1" = 40' 1" = 20'



REFERENCE KEYNOTES	
100	SITE IMPROVEMENTS
101	6" CURB PER CITY OF SLO STD DETAIL 4020, SHEET C-6.0
102	6" CURB & GUTTER PER CITY OF SLO STD DETAIL 4030, SHEET C-6.0
103	CONCRETE SIDEWALK PER CITY OF SLO STD DETAIL 4110, SHEET C-6.0 OVER 24" CLASS II AGGREGATE BASE
104	WHEEL STOP (48" LENGTH) PER CITY OF SLO STD DETAIL 2280, SHEET C-6.0
105	ACCESSIBLE PARKING STALL STRIPING AND SIGNAGE PER CALTRANS DETAIL ASQA, SHEET C-6.0
106	CURB RAMP PER CALTRANS DETAIL A88A, SHEET C-6.0
107	DETECTABLE WARNING SURFACE PER CALTRANS DETAIL A88A, SHEET C-6.0. SURFACE SHALL BE YELLOW AND APPROXIMATE FS 33538 OF SAE AMS-STD-595A. (CBC 11B-705.1.1.3.1)
108	SAWCUT AND REPLACE EXIST ASPHALT PER CITY OF SLO STD DETAIL 4810, NEW 6" ASPHALT INSTALLATION NOTES PER CITY OF SLO STD DETAIL 4110, SHEET C-6.0
109	TRENCH DRAIN AND CONCRETE ENCASUREMENT PER ZURN P6-BDD AND Z886-HD, SHEET C-6.0 AND DETAIL 1, SHEET C-6.0
110	CURB INLET PER CITY OF SLO STD DETAIL 3350, SHEET C-6.1
111	CONCRETE EDGING (LANDSCAPE CURB), SEE SHEETS SL-1 AND SL-2 FOR DETAIL
112	6" CURB PER CITY OF SLO STD DETAIL 4020, SHEET C-6.0
113	SINGLE STRIPE PARKING STALLS PER CITY OF SLO STD DETAIL 2250, SHEET C-6.1
114	INSTALL NEW LOG BARRIER PER DETAIL 30, SHEET C-6.1

SCALE: HORIZ VERT AS SHOWN
ORIGINAL SCALE IN INCHES FOR REDUCED PLANS

DATE	REVISIONS	APPROVAL
	DESCRIPTION	CITY



PROJECT ENGINEER

PLANS APPROVAL DATE

OWN AND TRANSMISSIONS: BUREAU OF PUBLIC WORKS
DESIGNED BY: BDM
DRAWN BY: CPK
CHECKED BY: BDM
APPROVED BY:
DATE: 12/21/2023
CITY SPECIFICATION NO. 200526-01



LAGUNA LAKE DOG PARK REVITALIZATION GRADING PLAN

PROJECT TITLE:
SHEET TITLE:

DESIGNED BY:
DRAWN BY:
CHECKED BY:
APPROVED BY:

DATE: 12/21/2023
CITY SPECIFICATION NO. 200526-01

SHEET NO. **C-3.3**

11 OF 31



PROJECT ENGINEER

PLANS APPROVAL DATE

Civil and Transportation Engineering
California Professional Engineer
License No. 50412
Brett G. Malet
San Luis Obispo, CA 93401
www.bmalet.com



**LAGUNA LAKE DOG PARK
REVITALIZATION
GRADING PLAN**

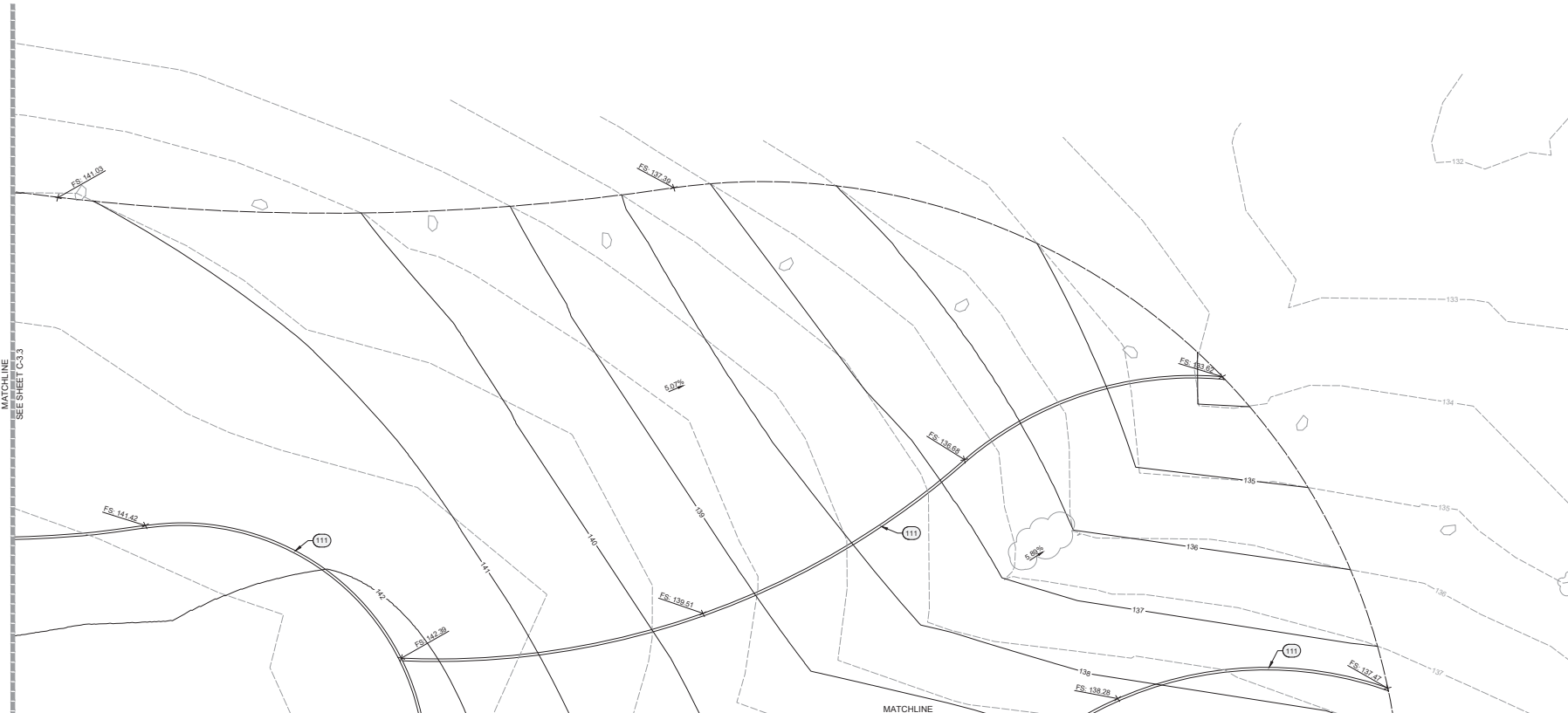
PROJECT TITLE
SHEET TITLE

DESIGNED BY: BDH
DRAWN BY: CPK
CHECKED BY: BDH
APPROVED BY:

DATE: 12/21/2023
CITY SPECIFICATION NO: 2005.26-01

SHEET NO: **C-3.4**

12 OF 31

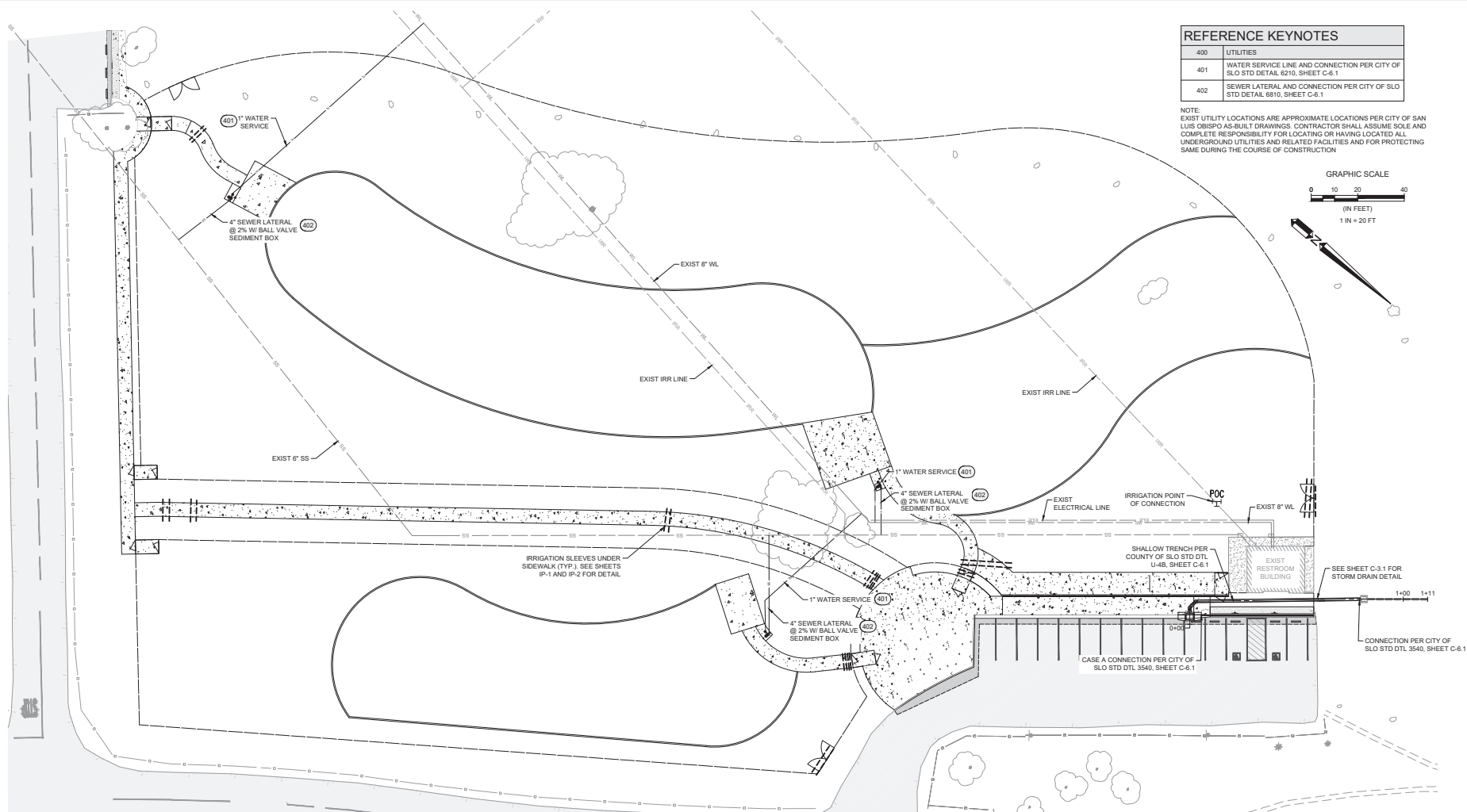


REFERENCE KEYNOTES	
100	SITE IMPROVEMENTS
101	6" CURB PER CITY OF SLO STD DETAIL 4020, SHEET C-6.0
102	6" CURB & GUTTER PER CITY OF SLO STD DETAIL 4030, SHEET C-6.0
103	CONCRETE SIDEWALK PER CITY OF SLO STD DETAIL 4110, SHEET C-6.0 OVER 24" CLASS II AGGREGATE BASE
104	WHEEL STOP (48" LENGTH) PER CITY OF SLO STD DETAIL 2280, SHEET C-6.0
105	ACCESSIBLE PARKING STALL STRIPING AND SIGNAGE PER CALTRANS DETAIL 880A, SHEET C-6.0
106	CURB RAMP PER CALTRANS DETAIL 88A, SHEET C-6.0
107	DETECTABLE WARNING SURFACE PER CALTRANS DETAIL 88A, SHEET C-6.0. SURFACE SHALL BE YELLOW AND APPROXIMATE FS 33538 OF SAE AMS-STD-595A. (CBC 11B-705.1.1.3.1.)
108	SAWCUT AND REPLACE EXIST ASPHALT PER CITY OF SLO STD DETAIL 4910, NEW 6" ASPHALT INSTALLATION NOTES PER CITY OF SLO STD DETAIL 4110, SHEET C-6.0
109	TRENCH DRAIN AND CONCRETE ENCASUREMENT PER ZURN P6-800 AND Z886-HD, SHEET C-6.0 AND DETAIL 1, SHEET C-6.0
110	CURB INLET PER CITY OF SLO STD DETAIL 3350, SHEET C-6.1
111	CONCRETE EDGING (LANDSCAPE CURB), SEE SHEETS SL-1 AND SL-2 FOR DETAIL
112	8" CURB PER CITY OF SLO STD DETAIL 4020, SHEET C-6.0
113	SINGLE STRIPE PARKING STALLS PER CITY OF SLO STD DETAIL 2250, SHEET C-6.1
114	INSTALL NEW LOG BARRIER PER DETAIL 30, SHEET C-6.1



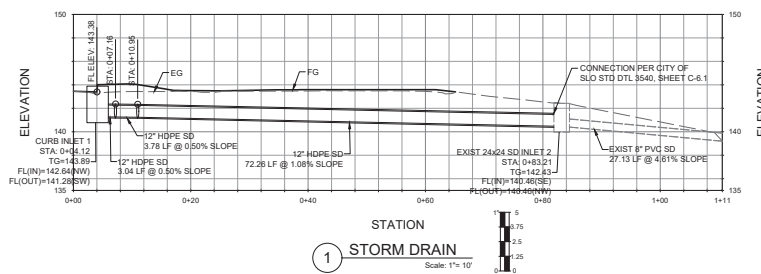
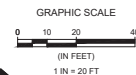
SCALE: HORIZ VERT AS SHOWN
ORIGINAL SCALE IN INCHES FOR REDUCED PLANS

DATE	REVISIONS DESCRIPTION	APPROVAL DESIGN APPROVAL	CITY



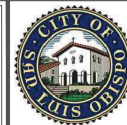
REFERENCE KEYNOTES	
400	UTILITIES
401	WATER SERVICE LINE AND CONNECTION PER CITY OF SLO STD DETAIL 6210, SHEET C-6.1
402	SEWER LATERAL AND CONNECTION PER CITY OF SLO STD DETAIL 6810, SHEET C-6.1

NOTE: EXISTING UTILITY LOCATIONS ARE APPROXIMATE LOCATIONS PER CITY OF SAN LUIS OBISPO AS-BUILT DRAWINGS. CONTRACTOR SHALL ASSUME SOLE AND COMPLETE RESPONSIBILITY FOR LOCATING OR HAVING LOCATED ALL UNDERGROUND UTILITIES AND RELATED FACILITIES AND FOR PROTECTING SAME DURING THE COURSE OF CONSTRUCTION



SCALE: HORIZ VERT AS SHOWN
ORIGINAL SCALE IN INCHES FOR REDUCED PLANS

DATE	REVISIONS	APPROVAL
	DESCRIPTION	DESIGN APPROVAL CITY



PROJECT ENGINEER

PLANS APPROVAL DATE

612 CLARION COURT
SAN LUIS OBISPO, CA 93401
www.bostgroup.com



LAGUNA LAKE DOG PARK
REVITALIZATION

UTILITY PLAN

PROJECT TITLE

DESIGNED BY: BDH

DRAWN BY: CPK

CHECKED BY: BDH

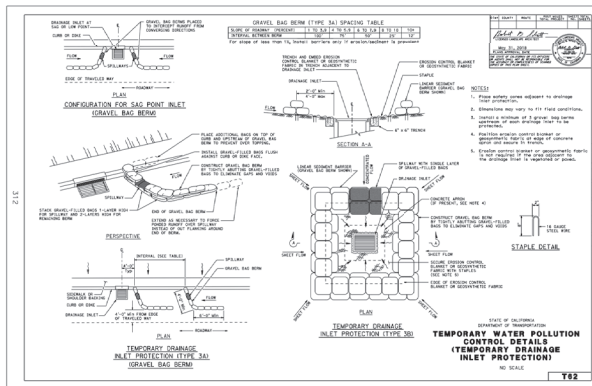
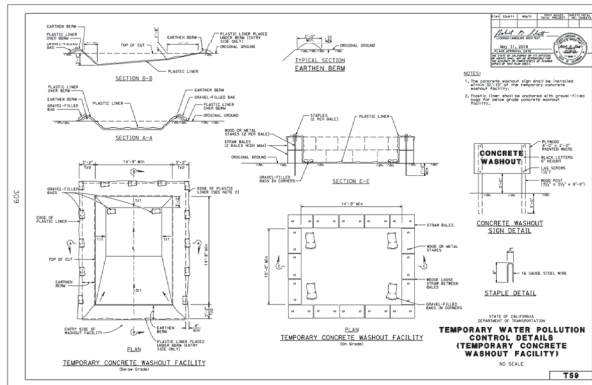
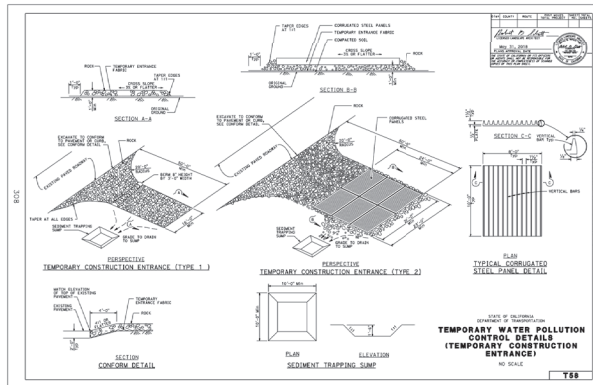
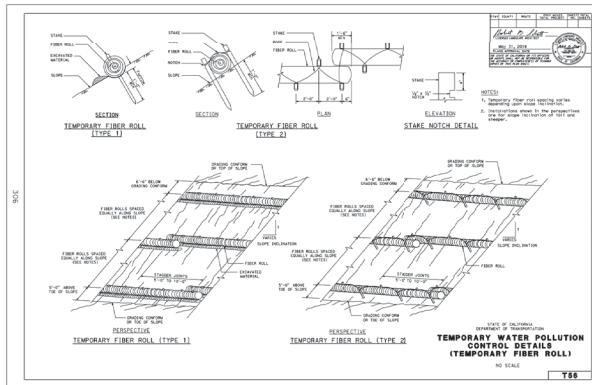
APPROVED BY:

DATE: 12/21/2023

CITY SPECIFICATION NO. 200526-01

SHEET NO. C-4.0

SHEET NO. 13 OF 31



Stockpile Management WM-3

Definition and Purpose

Stockpile management procedures and practices are designed to reduce or eliminate air and storm water pollution from stockpiles of soil, and paving materials such as portland cement concrete (PCC) rubble, asphalt concrete (AC), asphalt concrete rubble, aggregate base, aggregate subbase or pre-mixed aggregate, asphalt binder (so called "cold mix" asphalt) and pressure treated wood.

Appropriate Applications

Implemented in all projects that stockpile soil and other materials.

Limitations

Use of plastic cover might be restricted depending on the location of the site and regulatory permits.

Standards and Specifications

Stockpiles must comply with Standard Specification 13-4.03C (3) Stockpile Management.

Protection of stockpiles is a year-round requirement.

Locate stockpiles a minimum of 50 ft. away from concentrated flows of storm water, drainage courses, and inlets.

Utilize run-on and run-off BMPs to ensure stockpile materials are protected and do not have the potential to discharge material.

Implement wind erosion control practices as appropriate on all stockpiled material. For specific information on see WS-1, "Wind Erosion Control."

Caltrans Storm Water Quality Handbooks
Construction Site BMP Manual
May 2017

Section 8
Stockpile Management (WS-2)
1 of 3

Sanitary and Septic Waste Management WM-9

Definition and Purpose

Procedures and practices to minimize or eliminate the discharge of construction site sanitary and septic waste materials to the storm drain system or to receiving waters.

Appropriate Applications

Sanitary/septic waste management practices are implemented on all construction sites that use temporary or portable sanitary and septic waste systems.

Limitations

None identified.

Standards and Specifications

Erosion

Educate employees, subcontractors, and suppliers on sanitary and septic waste storage and disposal procedures.

Educate employees, subcontractors, and suppliers of potential dangers to humans and the environment from sanitary/septic wastes.

Instruct employees, subcontractors, and suppliers in identification of sanitary/septic waste.

Hold regular meetings to discuss and reinforce disposal procedures (incorporate into regular safety meetings and taglines).

Establish a continuing education program to indoctrinate new employees.

Caltrans Storm Water Quality Handbooks
Construction Site BMP Manual
May 2017

Section 8
Sanitary and Septic Waste Management (WS-9)
1 of 2

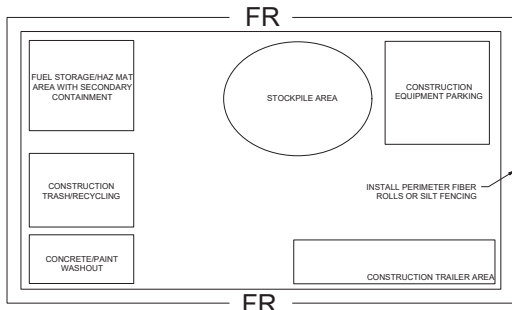
- ### GENERAL NOTES
- CALTRANS CONSTRUCTION SITE BEST MANAGEMENT PRACTICES (BMP) MANUAL (DATED MAY 2017) "FACT SHEETS" SHOWN ON THIS SHEET ARE FOR REFERENCE ONLY.
 - IT IS THE CONTRACTOR'S RESPONSIBILITY TO REFER TO ORIGINAL CALTRANS CONSTRUCTION SITE BMP MANUAL (MAY 2017) FOR ENTIRE "FACT SHEET" INFORMATION AND DOCUMENTATION.

SCALE: HORIZ AS SHOWN
VERT AS SHOWN

ORIGINAL SCALE IN INCHES
FOR REDUCED PLANS

0 1 2 3

DATE	REVISIONS	APPROVAL
	DESCRIPTION	DESIGNER
		CITY



505 CONSTRUCTION STAGING AREA
Scale: N.T.S.



PROJECT ENGINEER

PLANS APPROVAL DATE

612 CLAYTON COURT
SAN LUIS OBISPO, CA 95071
www.bostrom.com



**LAGUNA LAKE DOG PARK
REVITALIZATION**

EROSION CONTROL DETAILS

PROJECT TITLE:
SHEET TITLE:

DESIGNED BY:
BDH

DRAWN BY:
CPK

CHECKED BY:
BDH

APPROVED BY:

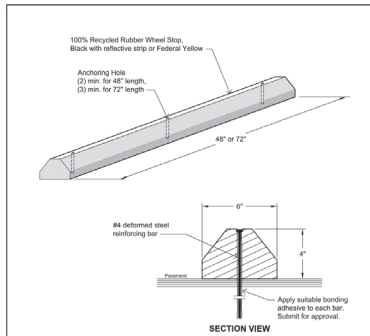
DATE: 12/21/2023

CITY SPECIFICATION NO.
2005-26-01

SHEET NO. **C-5.1**

SHEET NO.

15 OF 31

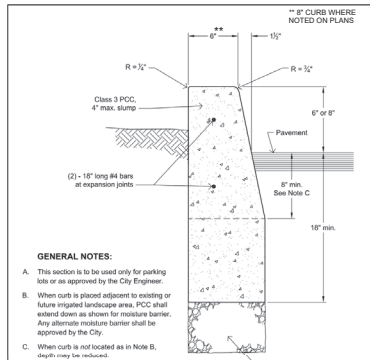


GENERAL NOTES:
 A. Wheel stop shall be installed at location where wheeled vehicles may roll into pedestrian, structures, or hazardous areas. Wheel stop location shall not create a barrier for pedestrians.
 B. Wheel stop shall be securely attached into grade concrete and grade asphalt pavement with #4 deformed steel reinforcing bars embedded in holes cast into wheel stops.
 C. Concrete pavement, drill holes in pavement for dowels. At parking structure slabs, epoxy to slab.

REVISIONS	BY	APP	DATE
New Standard	JCL	RL	4-13
Revision Note A	JCL	RL	5-12

WHEEL STOP

2280

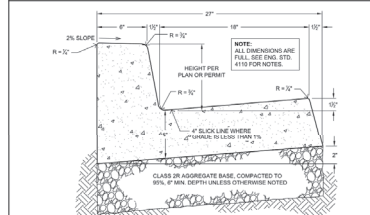
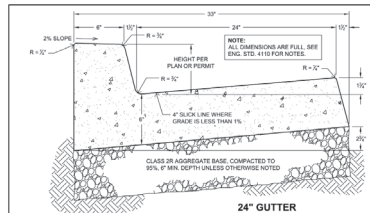


GENERAL NOTES:
 A. This section is to be used only for parking lots or as approved by the City Engineer.
 B. When curb is placed adjacent to existing or future ingested landscape area, PCC shall extend down as shown for measure barrier. Any alternate measure barrier shall be approved by the City.
 C. When curb is not located as in Note B, depth may be reduced.
 D. Expansion joints shall be placed at corners, B/Cs and E/Cs, and at 25 foot maximum spacing.
 E. See Engineering Standard 4110 for notes regarding required pavement removal and repair.

REVISIONS	BY	APP	DATE
Allow Class 2B Base	JCL	RL	11-08
Allow 60% compaction	JCL	RL	1-20
Drilling note	JCL	RL	10-12

CURB

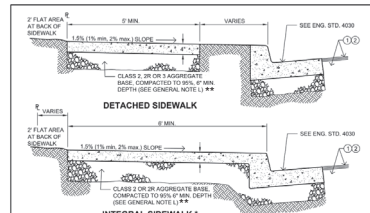
4020



REVISIONS	BY	APP	DATE
Drilling note	JCL	RL	10-12
Channel dimension correction	JCL	RL	9-12
and 60% compaction	JCL	RL	7-20

CURB & GUTTER

4030

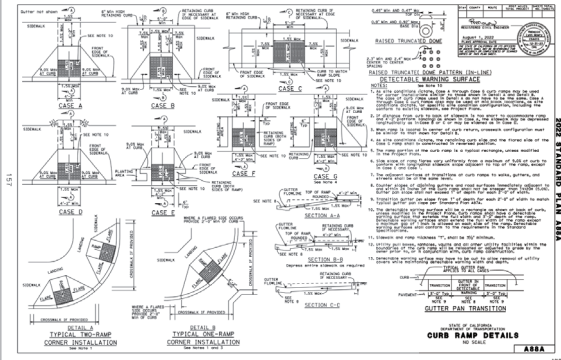


GENERAL NOTES:
 *Concrete sidewalk in the City standard integral sidewalk shall not be used without approval of City Engineer.
 A. CONCRETE Class 3.
 B. FINISH: PCC sidewalk shall be given a broom finish.
 C. SOIL AND CURB: Apply curing compound in compliance with section 75.1.03 of the Standard Specifications.
 D. DOWELS: 3\"/>

REVISIONS	BY	APP	DATE
Added General Note K	JCL	RL	10-15
Added General Note L	JCL	RL	10-17
and 60% compaction	JCL	RL	7-20

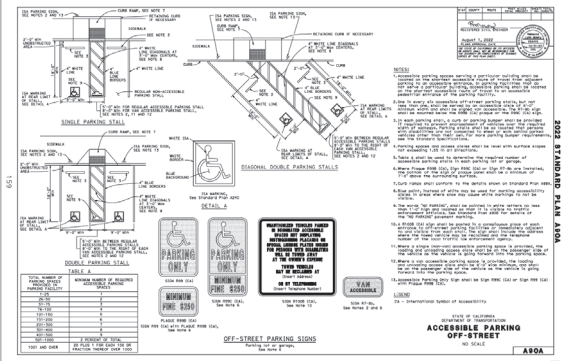
SIDEWALK INTEGRAL & DETACHED

4110



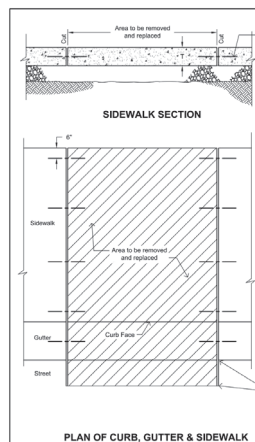
CURB RAMP DETAILS

ASDA



ACCESSIBLE PARKING OFF-STREET

ASDA



PLAN OF CURB, GUTTER & SIDEWALK

REVISIONS	BY	APP	DATE
Revised General Note	JCL	RL	2-24
Revised Cut Detail, Revised Date	SR	RL	5-14
Drilling note	JCL	RL	7-12

CUTTING CONCRETE

4910

Z886-HD
6-3/4\"/>

SPECIFICATION SHEET
TAG

Dimensional Data (inches and millimeters) are subject to manufacturing tolerances and change without notice. Linear (inches), Area (square feet), Weight (pounds).

REVISIONS: 1. Actual Channel length is 61 1/4\"/>

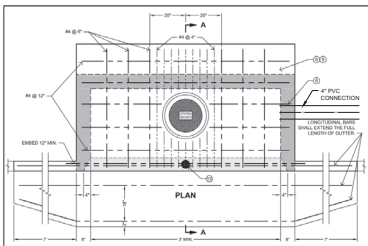
Rev.	Qty.	Unit	Weight (lbs)	Area (sq ft)
1	100	ft	1000	100
2	100	ft	1000	100
3	100	ft	1000	100
4	100	ft	1000	100
5	100	ft	1000	100
6	100	ft	1000	100
7	100	ft	1000	100
8	100	ft	1000	100
9	100	ft	1000	100
10	100	ft	1000	100
11	100	ft	1000	100
12	100	ft	1000	100
13	100	ft	1000	100
14	100	ft	1000	100
15	100	ft	1000	100
16	100	ft	1000	100
17	100	ft	1000	100
18	100	ft	1000	100
19	100	ft	1000	100
20	100	ft	1000	100
21	100	ft	1000	100
22	100	ft	1000	100
23	100	ft	1000	100
24	100	ft	1000	100
25	100	ft	1000	100
26	100	ft	1000	100
27	100	ft	1000	100
28	100	ft	1000	100
29	100	ft	1000	100
30	100	ft	1000	100
31	100	ft	1000	100
32	100	ft	1000	100
33	100	ft	1000	100
34	100	ft	1000	100
35	100	ft	1000	100
36	100	ft	1000	100
37	100	ft	1000	100
38	100	ft	1000	100
39	100	ft	1000	100
40	100	ft	1000	100
41	100	ft	1000	100
42	100	ft	1000	100
43	100	ft	1000	100
44	100	ft	1000	100
45	100	ft	1000	100
46	100	ft	1000	100
47	100	ft	1000	100
48	100	ft	1000	100
49	100	ft	1000	100
50	100	ft	1000	100
51	100	ft	1000	100
52	100	ft	1000	100
53	100	ft	1000	100
54	100	ft	1000	100
55	100	ft	1000	100
56	100	ft	1000	100
57	100	ft	1000	100
58	100	ft	1000	100
59	100	ft	1000	100
60	100	ft	1000	100
61	100	ft	1000	100
62	100	ft	1000	100
63	100	ft	1000	100
64	100	ft	1000	100
65	100	ft	1000	100
66	100	ft	1000	100
67	100	ft	1000	100
68	100	ft	1000	100
69	100	ft	1000	100
70	100	ft	1000	100
71	100	ft	1000	100
72	100	ft	1000	100
73	100	ft	1000	100
74	100	ft	1000	100
75	100	ft	1000	100
76	100	ft	1000	100
77	100	ft	1000	100
78	100	ft	1000	100
79	100	ft	1000	100
80	100	ft	1000	100
81	100	ft	1000	100
82	100	ft	1000	100
83	100	ft	1000	100
84	100	ft	1000	100
85	100	ft	1000	100
86	100	ft	1000	100
87	100	ft	1000	100
88	100	ft	1000	100
89	100	ft	1000	100
90	100	ft	1000	100
91	100	ft	1000	100
92	100	ft	1000	100
93	100	ft	1000	100
94	100	ft	1000	100
95	100	ft	1000	100
96	100	ft	1000	100
97	100	ft	1000	100
98	100	ft	1000	100
99	100	ft	1000	100
100	100	ft	1000	100

P6-BDD
6\"/>

BDD GRATE ENGINEERING SPECIFICATION: ZURN P6-BDD 20\"/>

800 - Diagonal Decorative

Item	Description	Unit	Weight (lbs)	Area (sq ft)
1	800 - Diagonal Decorative	ft	1000	100
2	800 - Diagonal Decorative	ft	1000	100
3	800 - Diagonal Decorative	ft	1000	100
4	800 - Diagonal Decorative	ft	1000	100
5	800 - Diagonal Decorative	ft	1000	100
6	800 - Diagonal Decorative	ft	1000	100
7	800 - Diagonal Decorative	ft	1000	100
8	800 - Diagonal Decorative	ft	1000	100
9	800 - Diagonal Decorative	ft	1000	100
10	800 - Diagonal Decorative	ft	1000	100
11	800 - Diagonal Decorative	ft	1000	100
12	800 - Diagonal Decorative	ft	1000	100
13	800 - Diagonal Decorative	ft	1000	100
14	800 - Diagonal Decorative	ft	1000	100
15	800 - Diagonal Decorative	ft	1000	100
16	800 - Diagonal Decorative	ft	1000	100
17	800 - Diagonal Decorative	ft	1000	100
18	800 - Diagonal Decorative	ft	1000	100
19	800 - Diagonal Decorative	ft	1000	100
20	800 - Diagonal Decorative	ft	1000	100
21	800 - Diagonal Decorative	ft	1000	100
22	800 - Diagonal Decorative	ft	1000	100
23	800 - Diagonal Decorative	ft	1000	100
24	800 - Diagonal Decorative	ft	1000	100
25	800 - Diagonal Decorative	ft	1000	100
26	800 - Diagonal Decorative	ft	1000	100
27	800 - Diagonal Decorative	ft	1000	100
28	800 - Diagonal Decorative	ft	1000	100
29	800 - Diagonal Decorative	ft	1000	100
30	800 - Diagonal Decorative	ft	1000	100
31	800 - Diagonal Decorative	ft	1000	100
32	800 - Diagonal Decorative	ft	1000	100
33	800 - Diagonal Decorative	ft	1000	100
34	800 - Diagonal Decorative	ft	1000	100
35	800 - Diagonal Decorative	ft	1000	100
36	800 - Diagonal Decorative	ft	1000	100
37	800 - Diagonal Decorative	ft	1000	100
38	800 - Diagonal Decorative	ft	1000	100
39	800 - Diagonal Decorative	ft	1000	100
40	800 - Diagonal Decorative	ft	1000	100
41	800 - Diagonal Decorative	ft	1000	100
42	800 - Diagonal Decorative	ft	1000	100
43	800 - Diagonal Decorative	ft	1000	100
44	800 - Diagonal Decorative	ft	1000	100
45	800 - Diagonal Decorative	ft	1000	100
46	800 - Diagonal Decorative	ft	1000	100
47	800 - Diagonal Decorative	ft	1000	100
48	800 - Diagonal Decorative	ft	1000	100
49	800 - Diagonal Decorative	ft	1000	100
50	800 - Diagonal Decorative	ft	1000	100
51	800 - Diagonal Decorative	ft	1000	100
52	800 - Diagonal Decorative	ft	1000	100
53	800 - Diagonal Decorative	ft	1000	100
54	800 - Diagonal Decorative	ft	1000	100
55	800 - Diagonal Decorative	ft	1000	100
56	800 - Diagonal Decorative	ft	1000	100
57	800 - Diagonal Decorative	ft	1000	100
58	800 - Diagonal Decorative	ft	1000	100
59	800 - Diagonal Decorative	ft	1000	100
60	800 - Diagonal Decorative	ft	1000	100
61	800 - Diagonal Decorative	ft	1000	100
62	800 - Diagonal Decorative	ft	1000	100
63	800 - Diagonal Decorative	ft	1000	100
64	800 - Diagonal Decorative	ft	1000	100
65	800 - Diagonal Decorative	ft	1000	100
66	800 - Diagonal Decorative	ft	1000	100
67	800 - Diagonal Decorative	ft	1000	100
68	800 - Diagonal Decorative	ft	1000	100
69	800 - Diagonal Decorative	ft	1000	100
70	800 - Diagonal Decorative	ft	1000	100
71	800 - Diagonal Decorative	ft	1000	100
72	800 - Diagonal Decorative	ft	1000	100
73	800 - Diagonal Decorative	ft	1000	100
74	800 - Diagonal Decorative	ft	1000	100
75	800 - Diagonal Decorative	ft	1000	100
76	800 - Diagonal Decorative	ft	1000	100
77	800 - Diagonal Decorative	ft	1000	100
78	800 - Diagonal Decorative	ft	1000	100
79	800 - Diagonal Decorative	ft	1000	100
80	800 - Diagonal Decorative	ft	1000	



INSTALLATION NOTES:

1. Excavate to a depth of 18\"/>

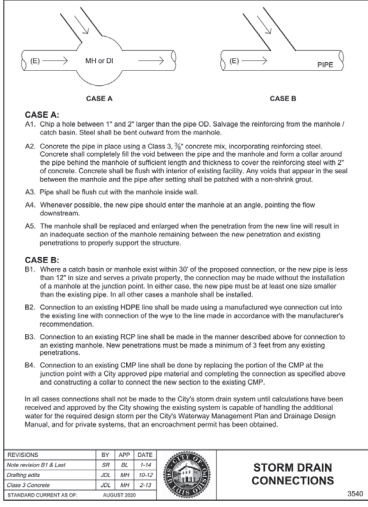
REVISIONS

REVISIONS	BY	APP	DATE
Revised Note 1	BL	BL	10-20
Revised Note 2	BL	BL	10-20
Revised Note 3	BL	BL	10-20

STANDARD CURRENT AS OF: AUGUST 2020

CATCH BASIN SIDE OPENING

3350



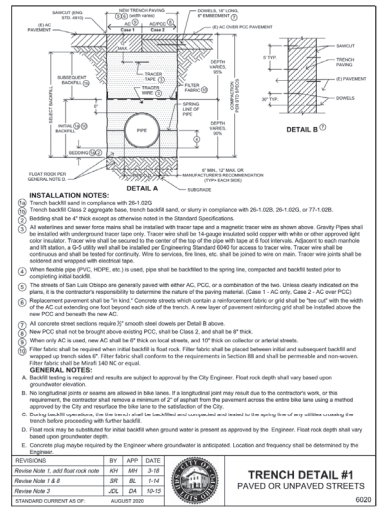
REVISIONS

REVISIONS	BY	APP	DATE
Revised Note 1	BL	BL	10-20
Revised Note 2	BL	BL	10-20
Revised Note 3	BL	BL	10-20

STANDARD CURRENT AS OF: AUGUST 2020

STORM DRAIN CONNECTIONS

3360



INSTALLATION NOTES:

1. Excavate to a depth of 18\"/>

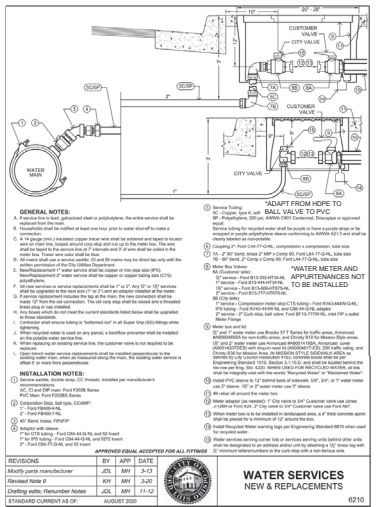
REVISIONS

REVISIONS	BY	APP	DATE
Revised Note 1	BL	BL	10-20
Revised Note 2	BL	BL	10-20
Revised Note 3	BL	BL	10-20

STANDARD CURRENT AS OF: AUGUST 2020

TRENCH DETAIL #1 PAVED OR UNPAVED STREETS

6020



INSTALLATION NOTES:

1. Excavate to a depth of 18\"/>

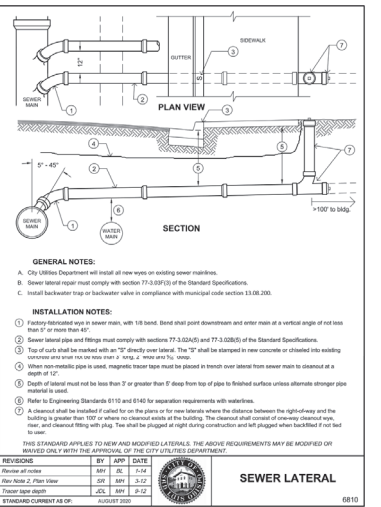
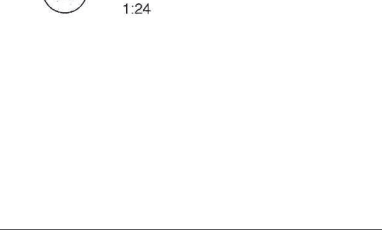
REVISIONS

REVISIONS	BY	APP	DATE
Revised Note 1	BL	BL	10-20
Revised Note 2	BL	BL	10-20
Revised Note 3	BL	BL	10-20

STANDARD CURRENT AS OF: AUGUST 2020

WATER SERVICES NEW & REPLACEMENTS

6210



INSTALLATION NOTES:

1. Excavate to a depth of 18\"/>

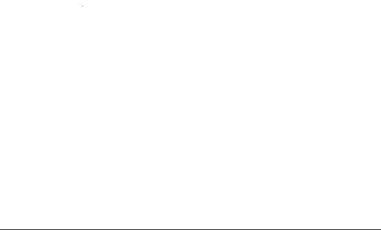
REVISIONS

REVISIONS	BY	APP	DATE
Revised Note 1	BL	BL	10-20
Revised Note 2	BL	BL	10-20
Revised Note 3	BL	BL	10-20

STANDARD CURRENT AS OF: AUGUST 2020

SEWER LATERAL

6310



CITY OF LUIS OBOSPO

PROJECT ENGINEER

PLANS APPROVAL DATE

REVISIONS

REVISIONS	BY	APP	DATE
Revised Note 1	BL	BL	10-20
Revised Note 2	BL	BL	10-20
Revised Note 3	BL	BL	10-20

STANDARD CURRENT AS OF: AUGUST 2020

LAGUNA LAKE DOG PARK REVITALIZATION

CONSTRUCTION DETAILS

PROJECT TITLE

SHEET TITLE

DESIGNED BY

DRAWN BY

CHECKED BY

APPROVED BY

DATE

CITY SPECIFICATION NO.

SHEET NO.

17 OF 31

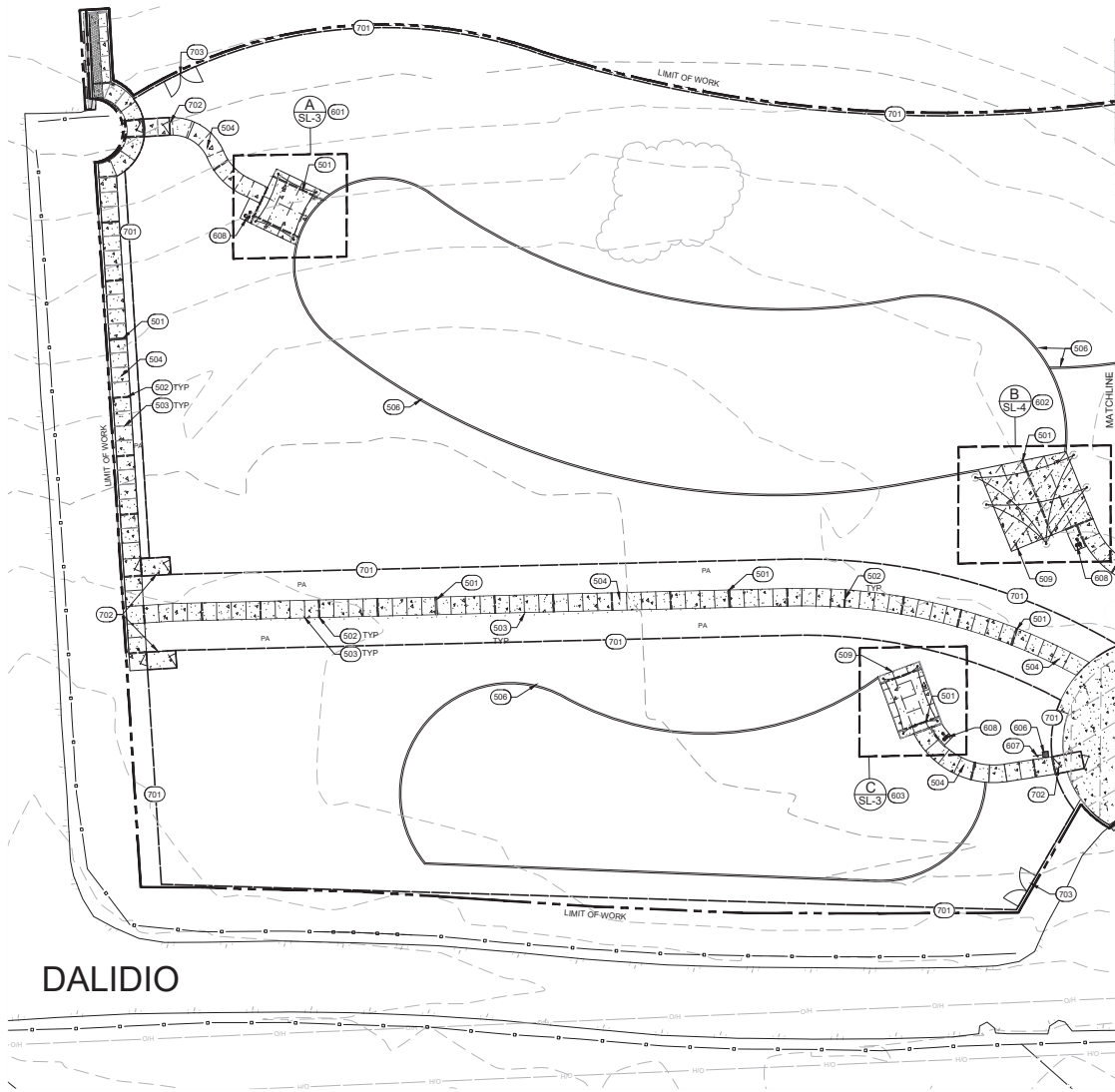
SCALE: HORIZ AS SHOWN

VERT

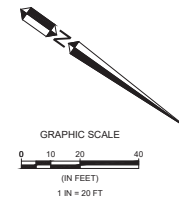
ORIGINAL SCALE IN INCHES FOR REDUCED PLANS

DATE	REVISIONS	APPROVAL
	DESCRIPTION	DATE

FILE NAME: 0051-0118 SITE.DWG



REFERENCE KEYNOTES	
KEYNOTE	DESCRIPTION
500	SURFACE IMPROVEMENTS
501	EXPANSION JOINTS AT 10' INTERVALS (EXCEPT WHERE SHOWN OR NOTED OTHERWISE), SEE DETAIL 4110, SHEET C-6.0
502	WEAKENED PLANE JOINTS, 20' O.C. SPACING (EXCEPT WHERE SHOWN OR NOTED OTHERWISE), SEE DETAIL 4110, SHEET C-6.0
503	SCORE MARKS AT 5' INTERVALS (EXCEPT WHERE SHOWN OR NOTED OTHERWISE), SEE DETAIL 4110, SHEET C-6.0
504	CONCRETE SIDEWALK: SEE DETAIL 4110, SHEET C-6.0
505	CONCRETE EXPANSION CONTROL: SEE DETAIL 4110, SHEET C-6.0
506	CONCRETE EDGING: SEE DETAIL 8710, SHEET SD-3
507	8" CONCRETE CURB: SEE DETAIL 4020, SHEET C-6.0
508	EXISTING LANDSCAPE BOULDERS-RELOCATED:
600	SITE FURNISHINGS
601	RECTANGULAR SHADE SAIL: SEE DETAILS 2-4, SHEET SD-1, ENLARGEMENT A, SHEET SL-3, AND SPECIAL PROVISIONS
602	TRIANGULAR SHADE SAIL: SEE DETAILS 1,4.5 SHEET SD-1, ENLARGEMENT B, SHEET SL-4, AND SPECIAL PROVISIONS
603	RECTANGULAR SHADE SAIL: SEE DETAILS 2-4, SHEET SD-1, ENLARGEMENT C, SHEET SL-3, AND SPECIAL PROVISIONS
604	RECTANGULAR SHADE SAIL: SEE DETAILS 2-4, SHEET SD-1, ENLARGEMENT D, SHEET SL-3, AND SPECIAL PROVISIONS
605	RELOCATE EXISTING BLUE PLASTIC TRASH RECYCLE RECEPTACLE, SEE REF. NOTE 202, SHEET C-1.2
606	RELOCATE EXISTING CONCRETE TRASH RECEPTACLE WITH FOUR-WAY METAL LID, SEE REF. NOTE 202, SHEET C-1.2
607	EXISTING PET STATION AND SIGN-RELOCATED, SEE DETAIL 3, SHEET SD-3
608	DRINKING FOUNTAIN AND DOG WATER STATION: SEE DETAIL 1, SHEET SD-3
700	SITE IMPROVEMENTS
701	4" CHAINLINK FENCE WITH BLACK VINYL COATING: SEE DETAIL 2, SHEET SD-2
702	DOG PARK DOUBLE ENTRY GATE: SEE DETAIL 3, SHEET SD-2
703	CHAINLINK MAINTENANCE GATE: SEE DETAIL 1, SHEET SD-2
704	4" CHAINLINK FENCE WITH CONCRETE CURB: SEE DETAIL 4020, SHEET C-6.0



SCALE: HORIZ VERT AS SHOWN
ORIGINAL SCALE IN INCHES FOR REDUCED PLANS
0 1 2

REVISIONS		APPROVAL	
DATE	DESCRIPTION	DESIGN	CITY



PROJECT ENGINEER

PLANS APPROVAL DATE

612 CLAYTON COURT
SAN LUIS OBISPO, CA 95051
WWW.BOSTROPOL.COM



LAGUNA LAKE DOG PARK
REVITALIZATION
SITE PLAN

PROJECT TITLE
SHEET TITLE:

DESIGNED BY: SLB

DRAWN BY: MCC

CHECKED BY: EAS

APPROVED BY:

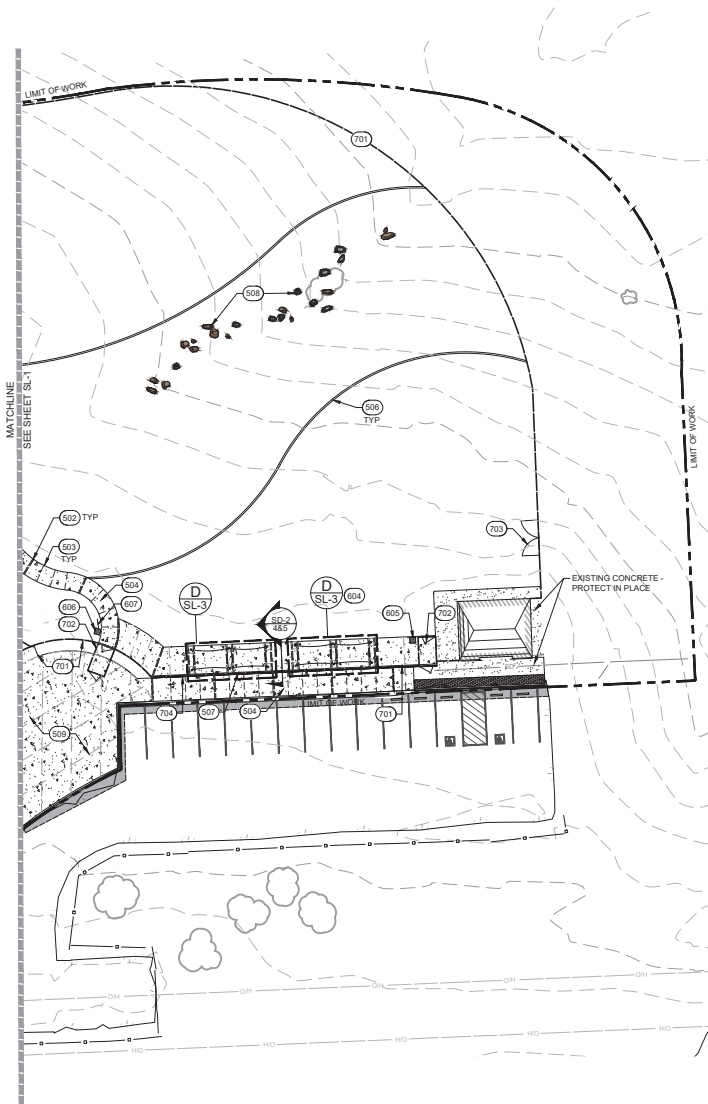
DATE: 12/21/2023

CITY SPECIFICATION NO. 200526-01

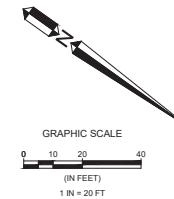
SHEET DES. SL-1

SHEET NO.

18 OF 31



REFERENCE KEYNOTES	
KEY	DESCRIPTION
500	SURFACE IMPROVEMENTS
501	EXPANSION JOINTS AT 100' INTERVALS (EXCEPT WHERE SHOWN OR NOTED OTHERWISE), SEE DETAIL 4110, SHEET C-6.0
502	WEAKENED PLANE JOINTS: 20' O.C. SPACING (EXCEPT WHERE SHOWN OR NOTED OTHERWISE) SEE DETAIL 4110, SHEET C-6.0
503	SCORE MARKS AT 5' INTERVALS (EXCEPT WHERE SHOWN OR NOTED OTHERWISE), SEE DETAIL 4110, SHEET C-6.0
504	CONCRETE SIDEWALK, SEE DETAIL 4110, SHEET C-6.0
505	CONCRETE EXPANSION CONTROL, SEE DETAIL 4110, SHEET C-6.0
506	CONCRETE EDGING, SEE DETAIL 8710, SHEET SD-3
507	8\"/>
600	SITE FURNISHINGS
601	RECTANGULAR SHADE SAIL, SEE DETAILS 2-4, SHEET SD-1, ENLARGEMENT A, SHEET SL-3, AND SPECIAL PROVISIONS
602	TRIANGULAR SHADE SAIL, SEE DETAILS 1,4,5 SHEET SD-1, ENLARGEMENT B, SHEET SL-4, AND SPECIAL PROVISIONS
603	RECTANGULAR SHADE SAIL, SEE DETAILS 2-4, SHEET SD-1, ENLARGEMENT C, SHEET SL-3, AND SPECIAL PROVISIONS
604	RECTANGULAR SHADE SAIL, SEE DETAILS 2-4, SHEET SD-1, ENLARGEMENT D, SHEET SL-3, AND SPECIAL PROVISIONS
605	RELOCATE EXISTING BLUE PLASTIC TRASH RECYCLE RECEPTACLE, SEE REF. NOTE 202, SHEET C-1.2
606	RELOCATE EXISTING CONCRETE TRASH RECEPTACLE WITH FOUR-WAY METAL LID, SEE REF. NOTE 202, SHEET C-1.2
607	EXISTING PET STATION AND SIGN-RELOCATED, SEE DETAIL 3, SHEET SD-3
608	DRINKING FOUNTAIN AND DOG WATER STATION, SEE DETAIL 1, SHEET SD-3
700	SITE IMPROVEMENTS
701	4\"/>
702	DOG PARK DOUBLE ENTRY GATE, SEE DETAIL 3, SHEET SD-2
703	CHAINLINK MAINTENANCE GATE, SEE DETAIL 1, SHEET SD-2
704	4\"/>



SCALE: HORIZ AS SHOWN
VERT AS SHOWN
ORIGINAL SCALE IN INCHES
FOR REDUCED PLANS
0 1 2

DATE	REVISIONS	APPROVAL	
		DESIGN	CITY



PROJECT ENGINEER

PLANS APPROVAL DATE

DATE AND TIME OF PLAN APPROVAL:
APPROVED FOR THE CITY OF SAN LUIS OBISPO
PUBLIC WORKS DEPARTMENT
WATER RESOURCES
612 CLAYTON COURT
SAN LUIS OBISPO, CA 93401
www.sanluisobispo.gov



PROJECT TITLE
**LAGUNA LAKE DOG PARK
REVITALIZATION**
SHEET TITLE:
SITE PLAN

DESIGNED BY:
SLB

DRAWN BY:
MCC

CHECKED BY:
EAS

APPROVED BY:

DATE: 12/21/2023

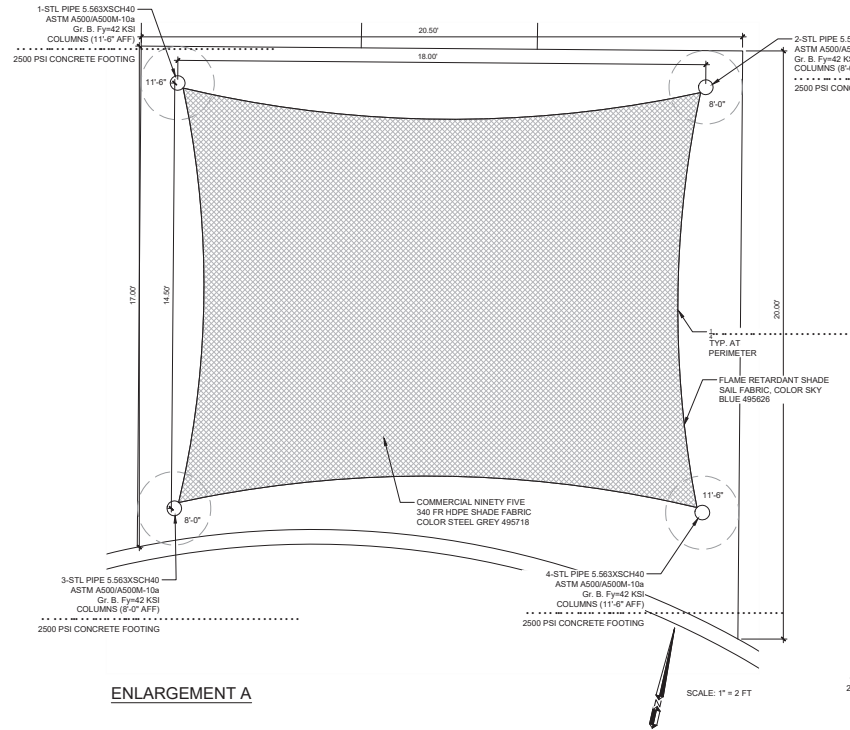
CITY SPECIFICATION NO:
200526-01

SHEET DES:
SL-2

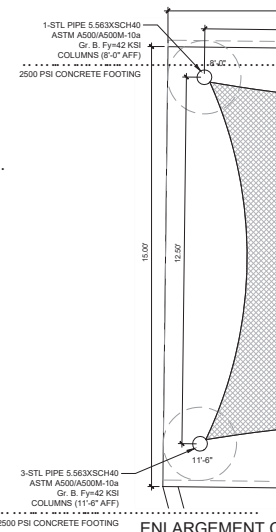
SHEET NO:

19 OF 31

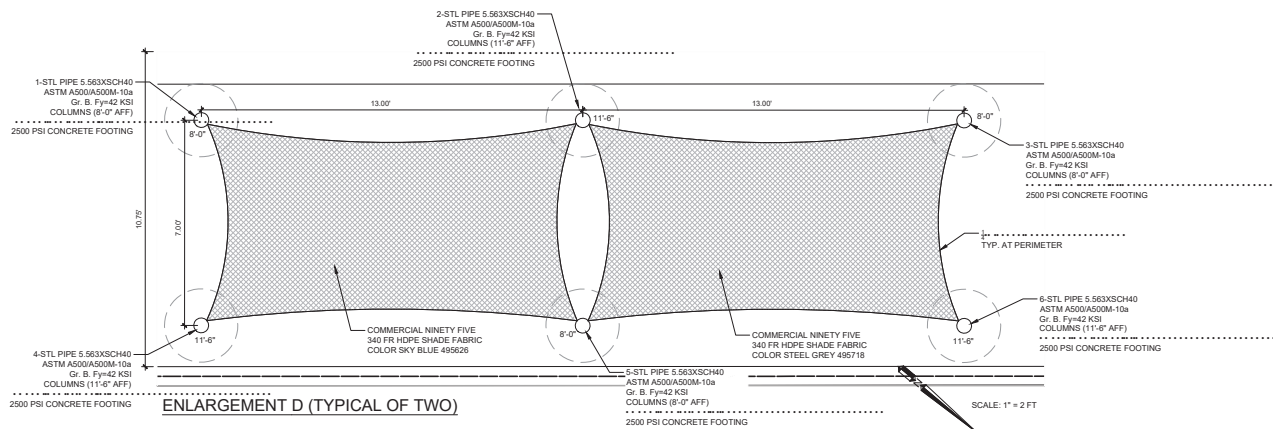
FILE NAME: 081-0118 SITE.DWG



2-STL PIPE 5.563XSCH40
ASTM A500/A500M-10a
Gr. B, Fy=42 KSI
COLUMNS (8'-0" AFF)
2500 PSI CONCRETE FOOTING



ENLARGEMENT C



ENLARGEMENT D (TYPICAL OF TWO)

NOTE:

ALL STEEL POSTS TO HAVE A WELDED CAP TO MATCH.



PROJECT ENGINEER

PLANS APPROVAL DATE

612 CLAYTON COURT
SAN LUIS OBISPO, CA 95051
www.valuedesign.com



LAGUNA LAKE DOG PARK
REVITALIZATION

SITE PLAN ENLARGEMENTS

PROJECT TITLE

SHEET TITLE

DESIGNED BY

SLB

DRAWN BY

MCC

CHECKED BY

EAS

APPROVED BY

CITY SPECIFICATION NO.

200526-01


SHEET DES

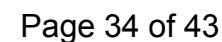
SL-3

SHEET NO.

20 OF 31

SCALE: HORIZ
VERT AS SHOWN
ORIGINAL SCALE IN INCHES
FOR REDUCED PLANS

		REVISIONS	APPROVAL	
DATE		DESCRIPTION	DESIGN ENGINEER	CITY

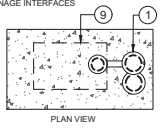


LEGEND:

- 1 DRINKING FOUNTAIN, SEE MANUFACTURER SPECIFICATIONS
- 2 CONCRETE PAVING
- 3 PVC DRAIN LINE, SEE CIVIL PLANS
- 4 WATER SUPPLY, SEE CIVIL PLANS
- 5 1" BRASS GATE VALVE, SEE SPECIFICATIONS
- 6 1" TEE W/ PLUG FOR DRAIN DOWN
- 7 6" ROUND PVC CLEANOUT IN BOX
- 8 12" X 18" CONCRETE VALVE BOX W/ LOCKING LID
- 9 30"W x 18"D ADA CLEARANCE AREA
- 10 DOG DRINKING FOUNTAIN

NOTES:

- A. INSTALL PER MANUFACTURER'S HARDWARE INSTRUCTIONS.
- B. SEE LANDSCAPE LAYOUT PLAN FOR LOCATIONS
- C. SEE CIVIL PLANS FOR UTILITY AND DRAINAGE INTERFACES

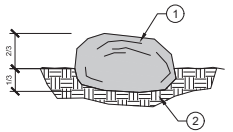


LEGEND:

- 1 EXISTING BOULDERS FROM SITE
- 2 COMPACTED SUBGRADE

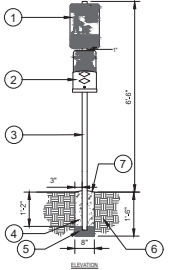
NOTES:

- A. DEPRESS BOULDER MASS $\frac{1}{2}$ TO $\frac{3}{4}$ BELOW GRADE AS SHOWN.
- B. SEE LANDSCAPE LAYOUT PLAN FOR LOCATIONS.
- C. BOULDER GROUPINGS SHALL BE VARYING SIZES
- D. BOULDERS TO BE SELECTED & COORDINATED WITH CITY REPRESENTATIVE IN THE FIELD.



LEGEND:

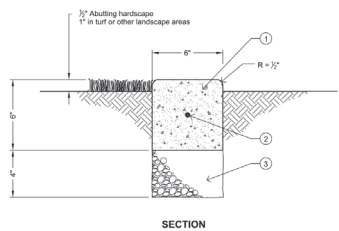
- 1 EXISTING PET SIGN
- 2 1.75" x 2" 14 GAUGE QUICK PUNCH POST
- 3 P.C. CONCRETE
- 4 AGGREGATE BASE
- 5 NATIVE SOIL
- 6 PITCH SURFACE TO DRAIN



1 DRINKING FOUNTAIN & DOG WATER STATION
1/2" = 1'-0" 131213-09

2 EXISTING LANDSCAPE BOULDERS
NTS 323020-04

3 RELOCATED PET STATION
1/2" = 1'-0" 120323-13



SECTION

GENERAL NOTES:

- A. $\frac{3}{4}$ " Full expansion joints at 20' intervals, at change in direction, at beginning/ends of curves, and where more slip abutts other structures.

INSTALLATION NOTES:

- 1 Class 3 Concrete, light broom finish. No color unless specified in contract documents.
- 2 #4 Reinforcing bar continuous at center. 18" overlap at splice.
- 3 Class 3 base. No recycled AC base allowed.

REVISIONS	BY	APP	DATE
New Standard	EL	EL	5-12
Drafting edit	JEL	MM	10-12



CONCRETE EDGING

8710

SCALE: HORIZ VERT AS SHOWN
ORIGINAL SCALE IN INCHES FOR REDUCED PLANS
0 1 2



PROJECT ENGINEER

PLANS APPROVAL DATE

CITY AND COUNTY ENGINEER
CITY OF SAN LUIS OBISPO
CIVIL ENGINEER
MEDICAL CENTER
PUBLIC WORKS DEPARTMENT
WATER RESOURCES
612 CLAYTON COURT
SAN LUIS OBISPO, CA 94901
www.slo.org



LAGUNA LAKE DOG PARK
REVITALIZATION

SITE DETAILS & NOTES

PROJECT TITLE

SHEET TITLE:

DESIGNED BY:

SLB

DRAWN BY:

MCC

CHECKED BY:

EAS

APPROVED BY:

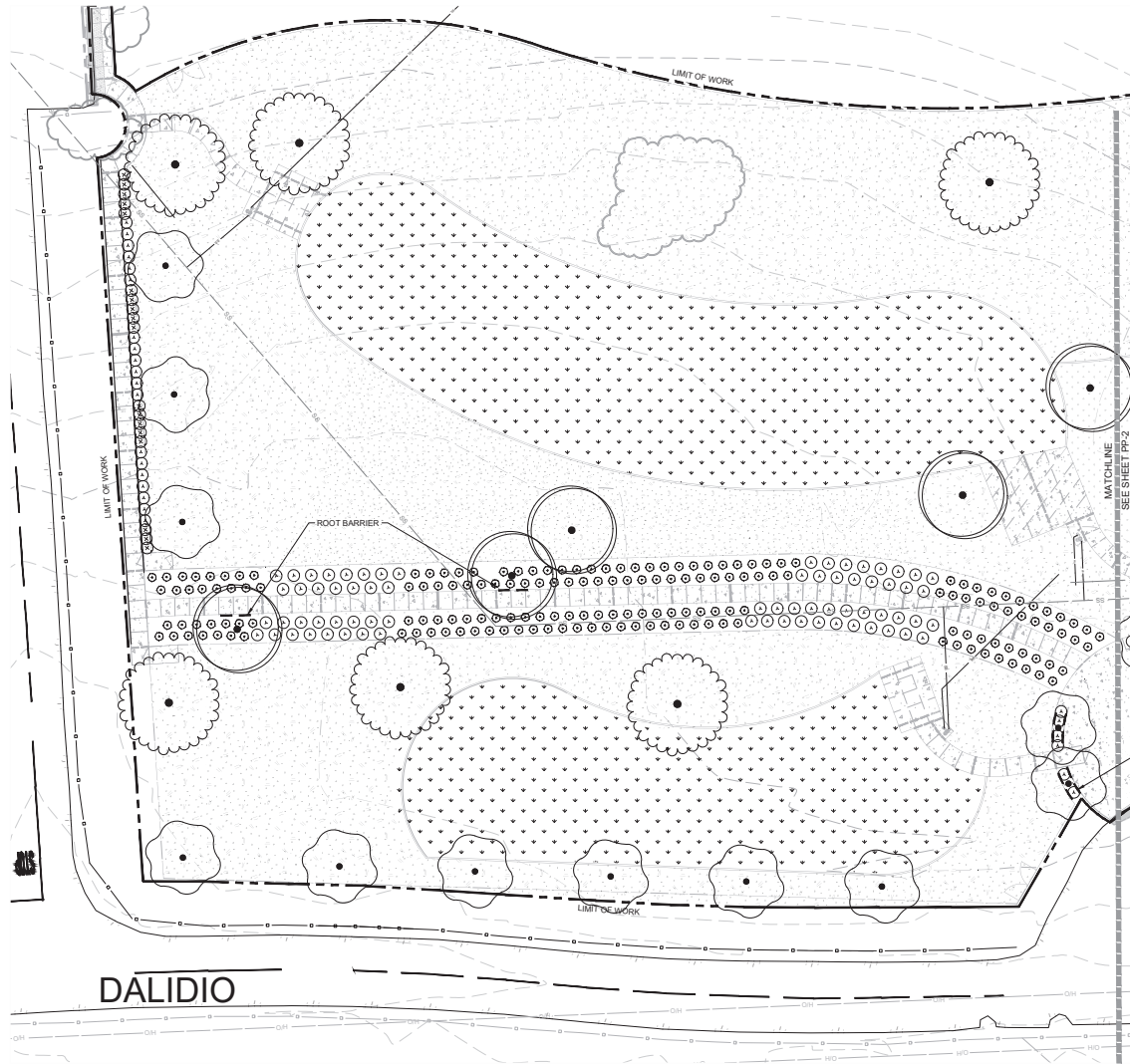
DATE: 12/21/2023

CITY SPECIFICATION NO. 200526-01

SHEET DES: SD-3

SHEET NO.

24 OF 31

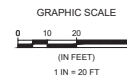


PLANT SCHEDULE


SYMBOL	BOTANICAL / COMMON NAME	CONT	QTY
TREES			
	ALNUS RHOMBIFOLIA / WHITE ALDER	24"BOX	8
	CUPRESSUS MACROCARPA / MONTEREY CYPRESS	24"BOX	5
	PLATANUS RACEMOSA / CALIFORNIA SYCAMORE MULTI-TRUNK	24"BOX	2
	QUERCUS AGRIFOLIA / COAST LIVE OAK	24"BOX	10
	X CHITALPA TASHKENTENSIS / CHITALPA	24"BOX	13
SHRUBS			
	ARCTOSTAPHYLOS X 'PACIFIC MIST' / PACIFIC MIST MANZANITA	5 GAL	18
	HETEROMELES ARBUTIFOLIA / TOYON	15 GAL	9
	JUNCUS PATENS 'ELK BLUE' / SPREADING RUSH	1 GAL	26
	LEYMUS CONDENSATUS 'CANYON PRINCE' / CANYON PRINCE GIANT WILD RYE	1 GAL	100
	MYRTICA CALIFORNICA / PACIFIC WAX MYRTLE	15 GAL	3
GROUND COVERS			
	BARK MULCH	NA	52,058 SF
	PEA GRAVEL	NA	11,935 SF
	TURF SOD / DROUGHT TOLERANT FESCUE BLEND	NA	25,889 SF
	ROOT BARRIER		

NOTES:

1. QUANTITIES SHOWN ARE FOR ENTIRE PROJECT.



SCALE: HORIZ AS SHOWN
VERT AS SHOWN
ORIGINAL SCALE IN INCHES
FOR REDUCED PLANS

		REVISIONS	APPROVAL	
DATE		DESCRIPTION	DESIGN ENGINEER	CITY



PROJECT ENGINEER

PLANS APPROVAL DATE

OWN AND TRANSMISSION FACILITIES
CALIFORNIA HIGH SPEED RAIL
WATERBURY PARK
612 CLAYTON COURT
SAN LUIS OBISPO, CA 93401
www.bostgroup.com



PROJECT TITLE
**LAGUNA LAKE DOG PARK
REVITALIZATION**

SHEET TITLE:
PLANTING PLAN

DESIGNED BY:
SLB

DRAWN BY:
MCC

CHECKED BY:
EAS

APPROVED BY:

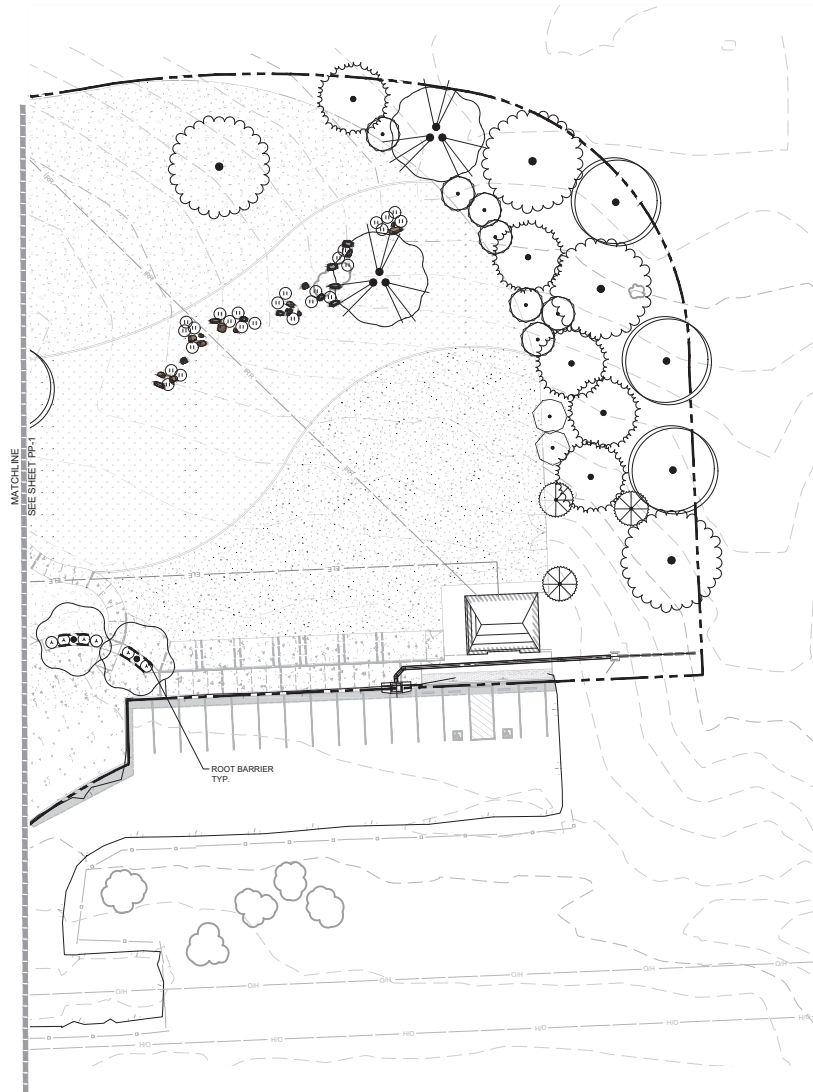
DATE: 12/21/2023

CITY SPECIFICATION NO:
200526-01

SHEET NO. **PP-1**

SHEET NO.

25 OF 31

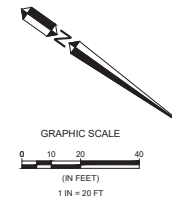


PLANT SCHEDULE

SYMBOL	BOTANICAL / COMMON NAME	CONT	QTY
TREES			
	ALNUS RHOMBOFOLIA / WHITE ALDER	24"BOX	8
	CUPRESSUS MACROCARPA / MONTEREY CYPRESS	24"BOX	5
	PLATANUS RACEMOSA / CALIFORNIA SYCAMORE MULTI-TRUNK	24"BOX	2
	QUERCUS AGRIFOLIA / COAST LIVE OAK	24"BOX	10
	X CHITALPA TASHKENTENSIS / CHITALPA	24"BOX	13
SHRUBS			
	ARCTOSTAPHYLOS X 'PACIFIC MIST' / PACIFIC MIST MANZANITA	5 GAL	18
	HETEROMELES ARBUTIFOLIA / TOYON	15 GAL	9
	JUNCUS PATENS 'ELK BLUE' / SPREADING RUSH	1 GAL	26
	LEYMUS CONDENSATUS 'CANYON PRINCE' / CANYON PRINCE GIANT WILD RYE	1 GAL	100
	MYRICA CALIFORNICA / PACIFIC WAX MYRTLE	15 GAL	3
GROUND COVERS			
	BARK MULCH	NA	52,058 SF
	PEA GRAVEL	NA	11,935 SF
	TURF SOD / DROUGHT TOLERANT FESCUE BLEND	NA	25,889 SF
	ROOT BARRIER		

NOTES:

1. QUANTITIES SHOWN ARE FOR ENTIRE PROJECT.



SCALE: HORIZ VERT AS SHOWN
ORIGINAL SCALE IN INCHES
FOR REDUCED PLANS

DATE	REVISIONS	APPROVAL
	DESCRIPTION	DESIGN APPROVAL CITY



PROJECT ENGINEER

PLANS APPROVAL DATE

OWN AND TRANSPORTATION DEPARTMENT
LANDSCAPE ARCHITECT
WILSON J. HARRINGTON
PUNYA J. HARRINGTON
WILSON J. HARRINGTON
612 CLAYTON COURT
SAN LUIS OBISPO, CA 95071
WWW.WILSONJHARRINGTON.COM



PROJECT TITLE
**LAGUNA LAKE DOG PARK
REVITALIZATION**

SHEET TITLE:
PLANTING PLAN

DESIGNED BY:
SLB

DRAWN BY:
MCC

CHECKED BY:
EAS

APPROVED BY:

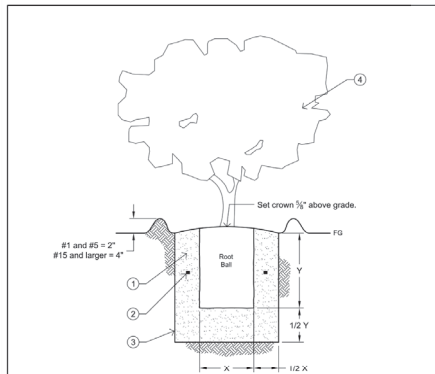
DATE: 12/21/2023

CITY SPECIFICATION NO:
200526-01

SHEET NO:
PP-2

SHEET NO:

26 OF 31



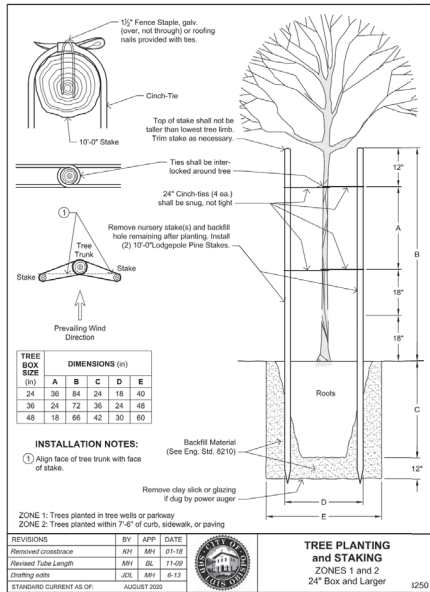
- NOTES:**
- Backfill per Standard Specifications.
 - Fertilizer tablets per Standard Specifications. Place tablet halfway up root ball and approximately 1 inch from root tips, equally spaced around the root ball.
 - Plant pit to have vertical sides. Pit shall be twice the width of root ball or container and one and a half times the height of the root ball or container. Sides and bottom of plant pit are to be scarified to remove shined surfaces.
 - Place plant in pit so that it is plumb and straight with best side facing the most viewed angle.

REVISIONS	BY	APP	DATE
New Standard	BL	JZW	1-04
Revised Note 2: Add Notes 3 and 4	JDK	BL	5-12
Revised note	JDK	BL	5-13
STANDARD CURRENT AS OF: AUGUST 2020			



SHRUB PLANTING

3410



TREE BOX SIZE	A	B	C	D	E
24	36	84	24	18	40
36	24	72	36	24	48
48	18	60	42	30	60

INSTALLATION NOTES:

- Align face of tree trunk with face of stake.
- Remove nursery stakes and backfill hole remaining after planting. Install (2) 10-07 Lodgepole Pine Stakes.

ZONE 1: Trees planted in tree wells or parkway
ZONE 2: Trees planted within 7'-6" of curb, sidewalk, or paving

REVISIONS	BY	APP	DATE
Removed crossbrace	BM	BM	01-10
Revised Tube Length	BM	BL	11-09
Revised note	JDK	BM	5-13
STANDARD CURRENT AS OF: AUGUST 2020			

TREE PLANTING and STAKING ZONES 1 and 2 24" Box and Larger

1250

LEGEND:

- 24" DEEP ROOT BARRIER SYSTEM. FACE ROOT GUIDING RIBS TOWARD ROOT BALL
- 3/4" CRUSHED ROCK OUTSIDE OF BARRIER
- EXCAVATE 12" OF SOIL BELOW ROOT BARRIER SYSTEM. REPLACE WITH FIRMLY COMPACTED AMENDED BACKFILL
- PLANT TABLETS. SEE PLANTING NOTES.
- AMENDED BACKFILL, COMPACTED
- RECESS 1" AT TURF TO ALLOW FOR MULCH
- 3" THICK MULCH LAYER
- 2" HIGH WATER WELL AT SHRUBS
- KEEP MULCH 6 - 8" FROM BASE OF TREE
- FINISHED GRADE

NOTES:

- SET ROOT BALL CROWN 1 1/2" HIGHER THAN FINISHED GRADE. SLOPE BACKFILL AWAY FROM ROOT BALL FOR POSITIVE DRAINAGE.
- ROOT BARRIER TO BE PLACED MIN. 4" FROM ROOT BALL.
- 4" MIN. GRAVEL BACKFILL REQUIRED

3 ROOT BARRIER TREE PLANTING ONLY

SCALE: NTS

329343.19-37

PLANTING NOTES:

- REFER TO PLANTING PLANS, PLAN NOTES, SPECIFICATIONS, PLANT LEGEND, AND PLANTING DETAILS FOR ADDITIONAL PLANTING INFORMATION. REFER TO IRRIGATION PLANS, NOTES, SPECIFICATIONS, AND DETAILS FOR RELATED LANDSCAPE WORK.
- NOTIFY OWNER'S REPRESENTATIVE (REP) 48 HOURS MINIMUM PRIOR TO COMMENCEMENT OF WORK TO COORDINATE PROJECT INSPECTION SCHEDULE.
- VERIFY ALL EXISTING CONDITIONS, DIMENSIONS AND ELEVATIONS BEFORE PROCEEDING WITH THE WORK. IMMEDIATELY NOTIFY OWNER'S REPRESENTATIVE OF FIELD CONDITIONS THAT VARY FROM THOSE SHOWN ON DRAWINGS AND SEEK CORRECTIONS AND DIRECTIONS BEFORE PROCEEDING WITH WORK. ASSUME FULL RESPONSIBILITY FOR ALL NECESSARY CORRECTIONS DUE TO FAILURE TO REPORT KNOWN DISCREPANCIES.
- LOCATE AND MARK ALL EXISTING UTILITIES WHETHER SHOWN HEREON OR NOT. PROTECT FROM DAMAGE ALL UTILITIES, AREAS AND STRUCTURES IN AND AROUND LANDSCAPE WORK AREAS. ASSUME FULL RESPONSIBILITY AND EXPENSE FOR REPAIR AND REPLACEMENT OF DAMAGES CAUSED BY CONTRACTOR.
- LOCATION OF NON-LANDSCAPE CONSTRUCTION ELEMENTS SUCH AS LIGHTS, SIGNS, VENTS, HYDRANTS, TRANSFORMERS, AND OTHER STRUCTURES OR ELEMENTS ARE APPROXIMATE. CONTRACTOR SHALL VERIFY FIELD CONDITIONS WHETHER SHOWN HEREON OR NOT. WHEN SHOWN ITEMS DO NOT CORRESPOND TO FIELD CONDITIONS, REPORT DISCREPANCIES TO OWNER'S REP. FOR CLARIFICATIONS AND INSTRUCTIONS PRIOR TO PROCEEDING WITH WORK.
- PLANTING ACCESSORIES & MATERIAL:
 - TREE TIE: CINCH TIE, BY V.I.T. PRODUCTS, 800-729-1314.
 - FERTILIZER TABLETS: AGRIFORM (OR APPROVED EQUAL) 20-10-5, THREE 20-GRAM TABLETS FOR 15 GALLON OR LARGER SIZE TREES, TWO 10-GRAM TABLETS FOR 5 GALLON SIZE PLANTS, ONE 10-GRAM TABLET FOR 1 GALLON SIZE.
 - ROOT BARRIER: 18" DEEP X 24" INJECTION MOLDED CO-POLYMER POLYPROPYLENE ROOT BARRIER PANELS.
 - TOPSOIL (BACKFILL MIX): 60-70% LOAM TOPSOIL THOROUGHLY MIXED WITH 30-40% FULLY COMPOSTED ORGANIC MATERIAL.
 - MULCH: CONIFEROUS BARK MULCH AS SHOWN ON PLAN AND AT SHRUB ONLY LOCATIONS WHERE NO COARSE GRAVEL OR RIVER COBBLE IS SHOWN. SUBMIT SAMPLE FOR APPROVAL.
- PROVIDE AGRONOMIC SOIL TEST PER SPECIFICATIONS.
- BACKFILL MIX: PREPARE IN ACCORDANCE TO SOIL TEST REPORT'S RECOMMENDATIONS, ADDING AMENDMENTS, FERTILIZER, AND OTHER MATERIAL AS REQUIRED TO SITE SOIL.
- ADD FERTILIZER AND AMENDMENTS TO THE SITE SOIL PER SOIL TEST REPORT RECOMMENDATIONS FOR PLANTING WORK.
- PRE-PLANTING PREPARATION:
 - PROCEED WITH PLANTING WORK ONLY AFTER IRRIGATION WORK IS COMPLETED, TESTED, AND APPROVED BY OWNER'S REP. PROTECT IRRIGATION SYSTEM FROM DAMAGE.
 - REMOVE ALL ROCKS GREATER THAN 1" DIAMETER AND ALL DEBRIS AND DELETERIOUS MATERIAL FROM PLANTING AREAS.
- PLANTS: ALL PLANTS OF THE SAME SPECIES/CULTIVAR/VARIETY SHALL HAVE MATCHING FORM, FLOWER COLOR, AND SIZE. IN HEALTHY AND THRIVING CONDITION, FREE FROM INJURIES, DISEASES, PESTS AND ROOT-BOUND OR GIRDLING ROOTS. REPLACE REJECTED PLANTS WITH MATCHING SPECIES, SIZE AND FORM.
- PLANTING:
 - IRRIGATE PLANTING AREAS TO BRING TOP 6" OF SOIL TO FIELD CAPACITY. ALLOW SOIL TO DRAIN. DO NOT WORK SOIL UNTIL IT RETURNS TO A MOST FRAGILE CONDITION. TREE EXCAVATIONS MAY REQUIRE ADDITIONAL IRRIGATION. FLOOD TREE PITS AS REQUIRED TO MOISTEN SUBGRADE.
 - PLACE PLANTS IN THEIR CONTAINERS AT THE LOCATIONS PER PLANS FOR APPROVAL BY OWNER'S REP. MAKE MINOR ADJUSTMENTS AS REQUIRED BY FIELD CONDITIONS AND TO ALLOW OPTIMAL IRRIGATION COVERAGE.
 - PLANT QUANTITIES GIVEN ON PLANT LEGEND ARE FOR GENERAL GUIDANCE ONLY. PROVIDE THE SPECIFIED PLANT SPECIES IN THE QUANTITIES AT THE REQUIRED SPACING TO ACHIEVE THE DESIGN EFFECT/INTENT SHOWN ON THE PLANS.
 - FOR TREES WITHIN 6 FEET OF PAVEMENT AND SLAB FOUNDATIONS, PRIOR TO TREE PLACEMENT, INSTALL ROOT BARRIER PANELS ALL AROUND THE PLANT PIT PER THE MANUFACTURER'S INSTALLATION INSTRUCTIONS AND DETAIL 2, THIS SHEET.
 - PLANT TREES AND SHRUBS AS SHOWN ON DETAILS.
 - INSTALL 3" DEEP CONIFEROUS BARK MULCH TO COVER BARE SOIL AROUND TREES & SHRUBS. KEEP MULCH 1" AWAY FROM SHRUB TRUNKS, 6" AWAY FROM TREE TRUNKS. DO NOT INSTALL CONIFEROUS BARK MULCH WHERE MINERAL MULCHES (PEA GRAVEL) OCCUR.
 - INSTALL 2" DEEP PEA GRAVEL WHERE SHOWN ON PLANS.
- 90 DAY MAINTENANCE PERIOD: MAINTAIN PLANTINGS IN THRIVING CONDITION USING ACCEPTED INDUSTRY PRACTICES FOR WATERING, FERTILIZING, AND PRUNING. DO NOT MOW BIOFILTRATION SOD. MAINTAIN TREE STAKES IN PROPER POSITIONS. REMOVE TREE STAKES AT END OF MAINTENANCE PERIOD. REPLACE PLANTS THAT DIE OR FAIL TO ESTABLISH IN THRIVING CONDITION WITH SPECIES, SIZE AND FORM MATCHING OTHERS ON SITE. REPAIR OR REPLACE BROKEN IRRIGATION COMPONENTS.
- WARRANTY: WARRANT PLANT MATERIAL AND IRRIGATION SYSTEM FOR ONE YEAR FROM END OF MAINTENANCE PERIOD. REPLACE DEAD OR DYING PLANTS AND BROKEN IRRIGATION COMPONENTS WITHIN THIS PERIOD.

SCALE: HORIZ AS SHOWN
VERT AS SHOWN
ORIGINAL SCALE IN INCHES
FOR REDUCED PLANS

DATE	REVISIONS	APPROVAL
	DESCRIPTION	DESIGN APPROVAL CITY



PROJECT ENGINEER

PLANS APPROVAL DATE



LAGUNA LAKE DOG PARK
REVITALIZATION

PLANTING DETAILS & NOTES

PROJECT TITLE

SHEET TITLE

DESIGNED BY

SLB

DRAWN BY

MCC

CHECKED BY

EAS

APPROVED BY

CITY SPECIFICATION NO.

200526-01

DATE

12/21/2023

SHEET NO.

PD-1

27 OF 31



CIVIL AND TRANSPORTATION ENGINEERING
 CONSTRUCTION MANAGEMENT
 LANDSCAPE ARCHITECTURE
 MECHANICAL ENGINEERING
 PLUMBING
 PUBLIC WORKS ADMINISTRATION
 SURVEYING AND SOLUTIONS
 WATER RESOURCES

612 CLAYTON CIRCLE
 SAN LUIS OBISPO, CA 93401
 T 805 544-4011 F 805 544-4294
www.walibosgroup.us



**LAGUNA LAKE DOG PARK
REVITALIZATION**

SHEET TITLE:

DESIGNED BY:
SLB

RAWN BY: MCC

CHECKED BY: **EAS**

APPROVED BY:

DATE: 12/21/2023

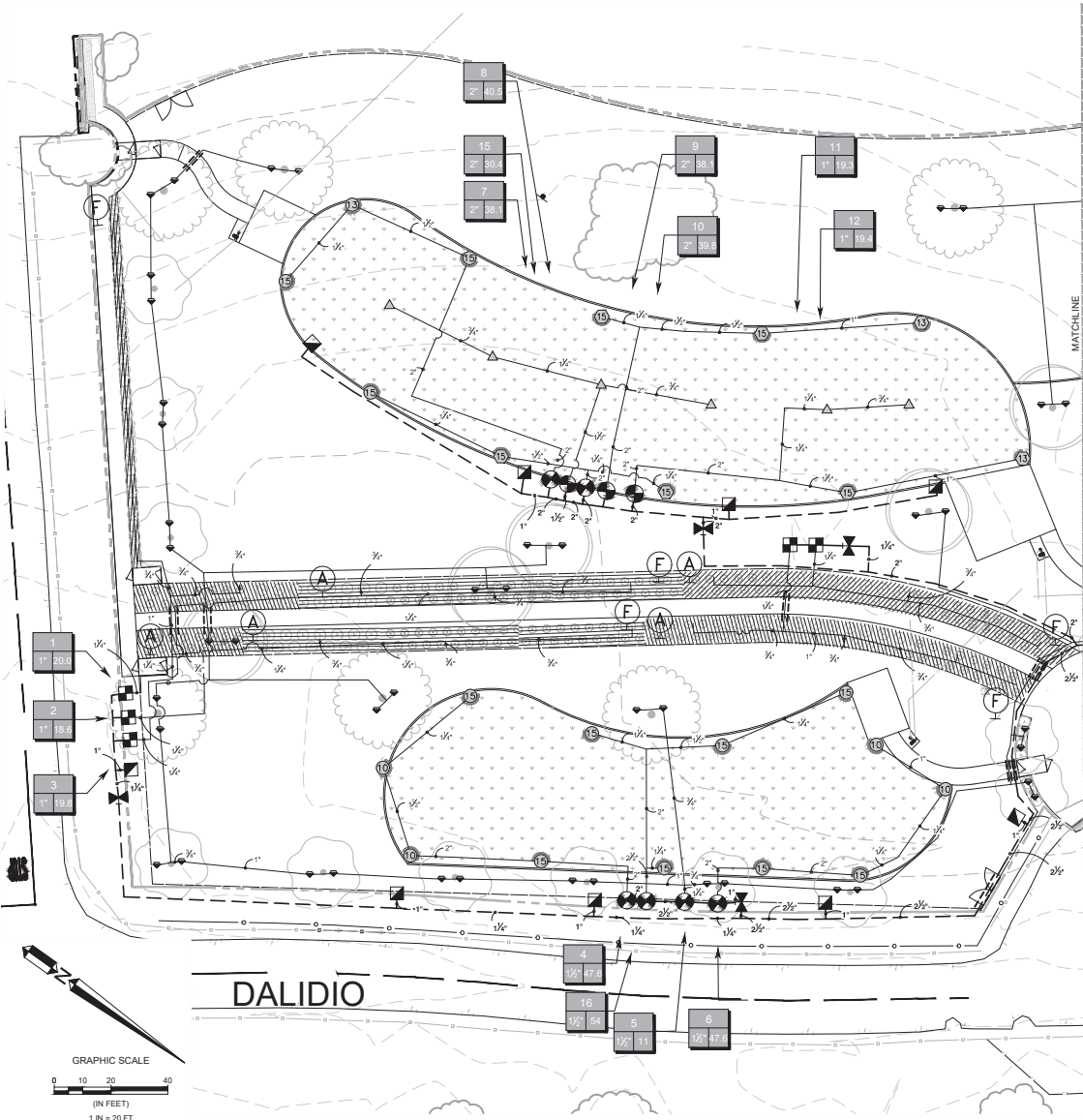
QUALITY SPECIFICATION NO.
2000526-01

SHEET DES. **IP-1**

SHEET NO.

28 OF 31

26 of 31

[illegible]

Value Cutoff

Valve Num

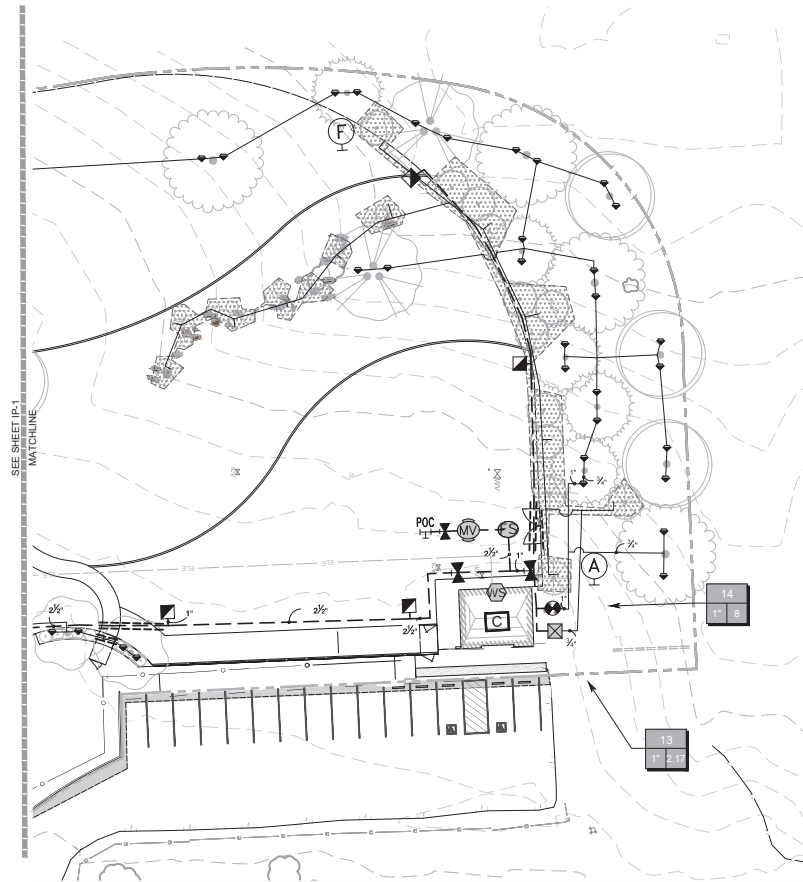
Valve Flow

Valve Size

SCALE: HORIZ AS SHOWN
VERT

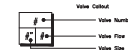
ORIGINAL SCALE IN INCHES
FOR REDUCED PLANS

[illegible]




IRRIGATION SCHEDULE

SYMBOL	MANUFACTURER/MODEL/DESCRIPTION	QTY	PIE
1/2"	HUNTER RZWL-SLEEVE-18-CV-25 18" LONG RZWL WITH FILTER FABRIC SLEEVE, 25 GPM OR 50 GPM RUBBER OPTIONS, CHECK VALVE, 1/2" BRASS JOINT FOR CONNECTION TO 1/2" PIPE	76	30
1/2"	HUNTER 140-66-SS-46 10 TURF ROTOR, 6IN. POP-UP, ADJUSTABLE TO FULL CIRCLE. DRAIN CHECK VALVE, STAINLESS STEEL RISER, 1IN. FEMALE NPT INLET THREADS, HIGH SPEED NOZZLE.	6	40 7.6 41"
1/2"	HUNTER 140-66-SS-46 10 TURF ROTOR, 6IN. POP-UP, ADJUSTABLE TO FULL CIRCLE. DRAIN CHECK VALVE, STAINLESS STEEL RISER, 1IN. FEMALE NPT INLET THREADS, HIGH SPEED NOZZLE.	4	50 10.3 45"
1/2"	HUNTER 140-66-SS-46 13 TURF ROTOR, 6IN. POP-UP, ADJUSTABLE TO FULL CIRCLE. DRAIN CHECK VALVE, STAINLESS STEEL RISER, 1IN. FEMALE NPT INLET THREADS, HIGH SPEED NOZZLE.	3	50 11.1 46"
1/2"	HUNTER 140-66-SS-46 10 TURF ROTOR, 6IN. POP-UP, ADJUSTABLE TO FULL CIRCLE. DRAIN CHECK VALVE, STAINLESS STEEL RISER, 1IN. FEMALE NPT INLET THREADS, HIGH SPEED NOZZLE.	16	50 13.5 51"
SYMBOL	MANUFACTURER/MODEL/DESCRIPTION	QTY	
1/2"	RAIN BRD XCC-150-LCS HIGH FLOW CONTROL, ZONE KIT, FOR LARGE COMMERCIAL DRIP ZONES, 1-1/2IN. PEEB GLOBE VALVE WITH SINGLE 1-1/2IN. PRESSURE REGULATING APRS QUICK-CHECK BASKET FILTER, FLOW RANGE: 15-60 GPM.	5	
1/2"	RAIN BRD XCCZ-100-PRF LOW FLOW, 3.2-10 GPM, WITH 1IN. LOW FLOW VALVE VALVE AND 1IN. PRESSURE REGULATING RBY FILTER AND APRS PRESSURE REGULATOR.	1	
1/2"	RAIN BRD MDCFCAP DRIPLINE FLUSH VALVE CAP IN COMPRESSION FITTING COUPLER.	6	
1/2"	RAIN BRD ARV500 1/2IN. AIR RELIEF VALVE, MADE OF QUALITY RUST-PROOF MATERIALS, WITH A 6IN. DRIP VALVE BOX (SEE TAB) EMITTER SOIL. USE WITH INSTALLATION BELOW SOIL. THE VALVE WILL ALLOW AIR TO ESCAPE THE PIPELINE, THUS PREVENTING WATER HAMMER OR BLOCKAGE.	6	
1/2"	AREA TO RECEIVE DRIP EMITTERS RAIN BRD 8025-PC SINGLE OUTLET, PRESSURE COMPENSATING DRIP EMITTERS, FLOW RATES OF 1.5 GPH/EMITTER, 1.0 GPH/BLACK, AND 2.0 GPH/RED. COMES WITH A SELF-PIERCING BARB INLET & BARB OUTLET, WITH CHECK VALVE.	2,637 S.F.	
1/2"	AREA TO RECEIVE DRIPLINE RAIN BRD FLOW-50-2 TECHLINE PRESSURE COMPENSATING LANDSCAPE DRIPLINE WITH CHECK VALVE, 0.9 GPH EMITTERS AT 1/2" O.C. DRIPLINE LATERALS SPACED AT 12" APART, WITH EMITTERS OFFSET FOR TRIANGULAR PATTERN, 1MM.	6,469 S.F.	
SYMBOL	MANUFACTURER/MODEL/DESCRIPTION	QTY	
1/2"	HUNTER CV-6-PS (2) 1IN., 1-1/2IN., 2IN., AND 3IN. PLASTIC ELECTRIC REMOTE CONTROL VALVES, GLOBE CONFIGURATION, WITH NPT THREADED INLET/OUTLET, FOR COMMERCIAL/MUNICIPAL USE, WITH FILTER BENTRY.	10	
1/2"	RAIN BRD 44-LRC (2) 1IN. BRASS QUICK-COUPLING VALVE, WITH CORROSION-RESISTANT STAINLESS STEEL SPRING LOCKING THERMOPLASTIC RUBBER COVER, AND 2-PIECE BODY.	13	
1/2"	MAINLINE ISOLATION GATE VALVE NIBCO T-134 THREADED (2-1/2" - 8" SIZE), NIBCO T-113 (2" & SMALLER SIZE).	7	
1/2"	BUCKNER SUPERIOR 3100-PRIS-BBPT 1-1/2" NORMALLY OPEN BRASS MASTER VALVE THAT PROVIDES DIRTY WATER PROTECTION, AVAILABLE IN 1/4", 1/2", 1-1/4", 1-1/2", 2", 2-1/2" AND 3" WITH BRITISH THREAD. PRESSURE REGULATION FEATURE, OR APPROVED EQUAL, PROVIDE DC LATCHING SOLENOID AND DECODER FOR 2-WIRE OPERATION.	1	
1/2"	CALSENSE CS3-16-WM GR-BUNDLE-2 CALSENSE CS3000-16-2 STATION CONTROLLER WITH THE WEATHER OPTION, MODELS CS3-WKIT, TO KEEP A RECORD OF ACCUMULATED RAINFALL. CONTROLLER IS BE WITHIN A RUGGED, LOCKABLE, VANDAL-PROOF STAINLESS STEEL WALL-MOUNT ENCLOSURE MOUNTED ON WALL INSIDE RESTROOM STORAGE AREA.	1	
1/2"	CALSENSE RS-1 CALSENSE TIPPING RAIN BUCKET WITH 2FT 20 WIRE CABLE, EXTENDABLE UP TO 1000FT WITH PTH171D CABLE (NOT INCLUDED).	1	
1/2"	CALSENSE FM-1208 CALSENSE IMPELLER FLOW SENSOR, 1-1/4IN. BRASS TIE-MOUNTED, 3 GPM-40 GPM.	1	
1/2"	POINT OF CONNECTION TIE INTO EXISTING IRRIGATION MAINLINE	1	
1/2"	IRRIGATION LATERAL LINE: PVC SCHEDULE 40	4,608 L.F.	
1/2"	IRRIGATION MAINLINE: PVC SCHEDULE 40	1,484 L.F.	
1/2"	PIPE SLEEVE: PVC CLASS 315 SDR 13.5 TYPICAL PIPE SLEEVE FOR IRRIGATION PIPE. PIPE SLEEVE SIZE SHALL ALLOW FOR IRRIGATION PIPING AND THEIR RELATED COUPLINGS TO EASILY SLIDE THROUGH SLEEVING MATERIAL. EXTEND SLEEVES 12 INCHES BEYOND EDGES OF PAVING OR CONSTRUCTION.	133.1 L.F.	



View Callout
View Number
View Title
View Date

SCALE: HORIZ
VERT AS SHOWN
ORIGINAL SCALE IN INCHES
FOR REDUCED PLANS

		REVISIONS	APPROVAL	
DATE		DESCRIPTION	DESIGN ENGINEER	CITY



PROJECT ENGINEER

PLANS APPROVAL DATE

City and County of Los Angeles
Department of Public Works
Bureau of Engineering
612 CLAYTON COURT
SAN LUIS OBISPO, CA 95051
www.bospro.com



**LAGUNA LAKE DOG PARK
REVITALIZATION**

IRRIGATION PLAN

PROJECT TITLE
SHEET TITLE:

DESIGNED BY: SLB
DRAWN BY: MCC
CHECKED BY: EAS
APPROVED BY:

DATE: 12/21/2023

CITY SPECIFICATION NO. 200526-01

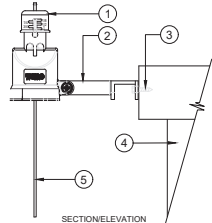
SHEET NO. IP-2

SHEET NO.

29 OF 31

LEGEND:

- 1 SET THE CONTROLLER 60" ABOVE FINISHED GRADE IN A WATERPROOF ENCLOSURE UNLESS OTHERWISE NOTED
 - 2 CONTROLLER AS SPECIFIED SECURELY BOLT CONTROLLER TO WALL. INSTALL BACKUP BATTERIES AS REQUIRED. GROUND AS PER MANUFACTURER'S SPECIFICATIONS.
 - 3 2" DIAMETER RIGID STEEL CONDUIT FOR RCV WIRES
 - 4 1/2" DIA. RIGID STEEL CONDUIT FOR 110 VAC ELECTRICAL SOURCE. INSTALL AS PER LOCAL ELECTRICAL CODES
 - 5 12" X 12" X 4" STEEL JUNCTION BOX. GROUP WIRE BUNDLES AND SPLICE TO 18 GA. WIRES WITH TERMINAL STRIP AS PER SPECIFICATIONS
 - 6 2" DIAMETER RIGID STEEL CONDUIT FOR RCV WIRES
 - 7 FINISHED GRADE
 - 8 LONG SWEEP ELL
 - 9 USE PVC SCH. 40 BELOW GRADE
- NOTE:
A. REPLACE EXISTING CONTROLLER AND USE EXISTING CONDUIT SWEEP



- NOTE:
MOUNT SENSOR VERTICALLY. AVOID PLACEMENT UNDER EYE OR TREE CANOPY. LOCATE WITHIN 300 FEET OF SENSOR RECEIVER AND CONTROLLER.
- NOTES:
A. INSTALLATION TO BE COMPLETED IN ACCORDANCE WITH MANUFACTURER'S SPECIFICATIONS.
B. DO NOT SCALE DRAWINGS.
C. CONTRACTOR NOTE: FOR PRODUCT AND COMPANY INFORMATION VISIT: www.CADetails.com/info
REFERENCE NUMBER 065-256.

LEGEND:

- 1 TORO WIRELESS RAIN SENSOR, MODEL NO. TWRF5
- 2 ADJUSTABLE MOUNTING BRACKET
- 3 WOOD SCREW
- 4 BUILDING WALL AT ROOF LINE
- 5 ANTENNA

SECTION/ELEVATION

2 WALL MOUNT CONTROLLER

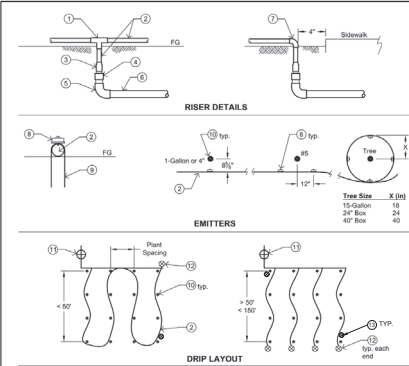
1" = 1'-0"

328409.13-02

3 WIRELESS RAIN SENSOR - ROOF LINE MOUNT

NOT TO SCALE

328409.65-06



GENERAL NOTES:

- Lateral lines shall be class 200 unless otherwise noted.
- All drip irrigation lines and emitters shall be installed below mulch layer.
- Total length of drip tubing not to exceed 150'.
- Ends of drip tube shall be no more than 3" from edge of hardscape in valve box as shown.
- In areas where recycled water will or could be used, all tubing shall be purple for use with recycled water.

INSTALLATION NOTES:

- 1 Drip Tee
- 2 Drip Tubing - 1/2"
- 3 Drip Thread / Slip Adapter
- 4 PVC Slip / Thread Adapter
- 5 PVC El
- 6 PVC Irrigation Lateral Line - 1/2"
- 7 Drip El
- 8 Emitter - Pressure compensating, self-regulating
- 9 1/2" Baffle @ 9 O.C. - Soil Saver
- 10 Center of Plant
- 11 Pressure Line Valve
- 12 Manual Flush Valve
- 13 Hunter pop up indicator

REVISIONS	BY	APP	DATE
New Standard	BL	JCH	1-01
Added Note II	SR	BL	3-09
Drafting edit	JCL	AM	6-13

STANDARD CURRENT AS OF: AUGUST 2020



DRIP IRRIGATION

8660

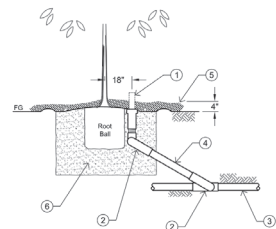
REVISIONS	BY	APP	DATE
New Standard	BL	JCH	1-01
Drafting edit	JCL	AM	6-13
Added Note 7	SR	BL	

STANDARD CURRENT AS OF: AUGUST 2020



TREE BUBBLER

3670



GENERAL NOTES:

- Where system is or has the potential to hook up to non-potable water, rotor head shall have a Recycled Water cover.
- Pipe material shall be Class 200 PCV.
- See Engineering Standards for tree planting.
- Minimum of one (1) bubbler per tree or as specified on the plans.

INSTALLATION NOTES:

- 1 Bubbler Pop-up, set even with finished grade: Rain Bird
- 2 Triple Swing Joint: Marflex (3)
- 3 Irrigation Lateral Line
- 4 Schedule 80 PVC Nipple
- 5 4" deep Mulch
- 6 5 gallon tree: 36" diameter around tree
- 7 15 gallon tree: 48" diameter around tree
- 8 24" box: 72" diameter around tree
- 9 Backfill per Standard Specifications

REVISIONS	BY	APP	DATE
New Standard	BL	JCH	1-01
Drafting edit	JCL	AM	6-13
Added Note 7	SR	BL	

STANDARD CURRENT AS OF: AUGUST 2020



IRRIGATION NOTES:

1. THE SYSTEM DESIGN SHOWN IS BASED UPON A MINIMUM PRESSURE OF 80 PSI AT A MAXIMUM DISCHARGE OF 80 GPM. VERIFY PRESSURE AND FLOW ON SITE PRIOR TO CONSTRUCTION WORK AND REPORT ANY DISCREPANCIES TO THE OWNER'S REPRESENTATIVE.
2. ALL WORK SHALL CONFORM TO LOCAL AND STATE CODES AND ORDINANCES AND THE PLANS, SPECIFICATIONS, DETAILS AND NOTES FOR THIS PROJECT. READ THOROUGHLY AND BECOME FAMILIAR WITH THE SPECIFICATIONS AND INSTALLATION DETAILS FOR THIS AND RELATED WORK PRIOR TO CONSTRUCTION.
3. THE CONTRACTOR SHALL VERIFY ALL EXISTING CONDITIONS, INCLUDING, BUT NOT LIMITED TO, UNDERGROUND UTILITIES AND STRUCTURES. COORDINATE ALL WORK WITH CIVIL, MECHANICAL, AND ELECTRICAL WORK AND TRADES TO MINIMIZE CONFLICTS. THE WORK INCLUDES THE RESPONSIBILITY FOR THE INSTALLATION OF IRRIGATION SLEEVING. CONTRACTOR SHALL COORDINATE SLEEVE INSTALLATION AND SEQUENCE HIS WORK WITH ALL WORK AND DISCIPLINES AS REQUIRED.
4. LAYOUT SHOWN IS DIAGRAMMATIC. IRRIGATION PIPING AND COMPONENTS MAY BE SHOWN OUTSIDE PLANTING AREAS FOR CLARITY. INSTALL IRRIGATION PIPING AND WIRING IN LANDSCAPED AREAS WHENEVER POSSIBLE. INSTALL IRRIGATION VALVES IN GRASS COVER OR SHRUB AREAS WHENEVER POSSIBLE. LOCATE IRRIGATION CONTROL AND QUICK COUPLING VALVES ADJACENT TO HARDSCAPE OR TURF AREAS FOR EASY ACCESS. AVOID CONFLICTS BETWEEN THE IRRIGATION SYSTEM, PLANTING MATERIAL, AND ARCHITECTURAL FEATURES.
5. DO NOT PROCEED WITH THE INSTALLATION OF THE SYSTEM WHEN IT IS EVIDENT THAT FIELD CONDITIONS OR DIFFERENCES EXIST THAT COULD NOT HAVE BEEN CONSIDERED IN ENGINEERING OR IF DISCREPANCIES IN CONSTRUCTION DRAWINGS, DETAILS, NOTES AND SPECIFICATIONS ARE DISCOVERED. BRING ALL SUCH OFFERING FIELD CONDITIONS AND DISCREPANCIES TO THE ATTENTION OF THE OWNER'S REPRESENTATIVE.
6. THE BACKFLOW PREVENTION DEVICE IS EXISTING AND LOCATED AT PARK ENTRANCE ALONG MADONNA RD.
7. SEE LEGEND FOR PIPING MATERIAL. SEE DRAWINGS AND LEGEND FOR PIPE SIZES. SIZE CALLOUTS ON DRAWINGS INDICATE NOMINAL PIPE SIZE. UNLABELED SECTIONS ARE THE NOMINAL SIZE OF THE PRECEDING CALLOUT. SUBSEQUENT CALLOUTS INDICATE CHANGE IN PIPE SIZE.
8. UNLESS OTHERWISE NOTED, TRENCHING DEPTHS FOR IRRIGATION SHALL BE 18" FOR MAINLINES AND 12" FOR LATERALS. DEPTH SHALL BE MEASURED FROM THE TOP OF PIPE TO FINISHED SOIL LEVEL.
9. INSTALL CONCRETE THRUST BLOCKS ON ALL MAINLINES THREE (3) INCHES AND LARGER IN DIAMETER IN ACCORDANCE WITH LOCAL CODES AND STANDARDS OR AS PER STANDARD S378.1.
10. ALL MAINLINES, LATERALS, AND CONTROL WIRES UNDER PAVEMENT OR CONCRETE SHALL BE INSTALLED IN SCHEDULE 40 PVC SLEEVES. SLEEVES SHALL EXTEND 12" BEYOND EDGE OF PAVEMENT AND SHALL HAVE ENDS CLEARLY MARKED ABOVE GRADE DURING CONSTRUCTION.
11. PRIOR TO BACKFILLING, FLUSH AND TEST MAINS AND LATERALS. FLUSH MAINS BEFORE INSTALLING VALVES. FLUSH LATERALS BEFORE INSTALLING SPRINKLERS. SUBJECT MAINS TO HYDROSTATIC PRESSURE OF 1.5 TIMES THE ANTICIPATED OPERATING PRESSURE (MIN. 100 PSI) FOR TWO HOURS. SUBJECT LATERALS TO HYDROSTATIC PRESSURE EQUAL TO ANTICIPATED OPERATING PRESSURE. ALL FLUSHING SHALL BE DONE IN THE PRESENCE OF THE ARCHITECT. BACKFILL WITH CLEAN MATERIAL FROM EXCAVATION. REMOVE ROCKS AND DEBRIS LARGER THAN 1" DIAMETER.
12. INSTALL QUICK COUPLING VALVE ASSEMBLIES AS SHOWN OR APPROXIMATELY 50 FEET ON CENTER FOR IRRIGATION AND HARDSCAPE WASHDOWN WATER.
13. THE FINAL LOCATION OF THE IRRIGATION CONTROLLER SHALL BE APPROVED BY OWNER'S REPRESENTATIVE PRIOR TO INSTALLATION. 120V ELECTRICAL SUPPLY SHALL BE BY OTHERS. THE IRRIGATION CONTRACTOR SHALL BE RESPONSIBLE FOR MAKING THE FINAL CONNECTION TO THE CONTROLLER IN ACCORDANCE WITH THE MANUFACTURER'S RECOMMENDATIONS AND LOCAL ELECTRICAL CODES.
14. INSTALL ONE (1) AWG #14 CONTROL WIRE (WIRE COLOR TO VARY FOR EACH VALVE) FROM THE CONTROLLER TO EACH REMOTE CONTROL VALVE. INSTALL ONE (1) AWG #14 WIRE (GREEN) FROM THE CONTROLLER TO THE MOST REMOTE REMOTE CONTROL VALVE ALONG EACH BRANCH OF WIRING RUNS FOR USE AS A SPARE CONTROL WIRE. INSTALL ONE (1) AWG #12 WIRE (WHITE) FOR COMMON GROUND. COIL THREE (3) FEET OF WIRE IN EACH VALVE OR SPLICE BOX. USE 3M DBY SPLICE KITS FOR ALL WIRE CONNECTIONS AND SPLICES.
15. CONTRACTOR SHALL BE RESPONSIBLE FOR COMPLETE AND UNIFORM COVERAGE OF ALL PLANTED AREAS. ADJUST REMOTE CONTROL VALVE PRESSURE REGULATOR AND FLOW CONTROL TO BALANCE EACH LATERAL SYSTEM AND TO ENSURE PROPER VALVE CLOSURE TIME. SELECT AND ADJUST NOZZLES FOR SPRAY AND BUBBLER SPRINKLERS WITH RADI AND ANGLES TO ENSURE UNIFORM COVERAGE WITH MINIMUM OVERSPRAY. SELECT NOZZLES FOR ROTARY SPRINKLERS AND ADJUST DIFFUSER AND RADIUS TO ENSURE UNIFORM COVERAGE WITH MINIMUM OVERSPRAY.
16. CONTRACTOR SHALL ADJUST SPRINKLER HEAD LOCATION(S) AND ADD HEADS AS REQUIRED TO ACCOMMODATE VERTICAL OBSTRUCTIONS, INCLUDING, BUT NOT LIMITED TO LIGHT POLES, FIRE HYDRANTS, AND SIGNAGE.
17. INSTALL PLASTIC CHECK VALVES AT THE BASE OF ALL SPRINKLER HEADS OR INSTALL SPRINKLER HEADS WITH INTEGRAL CHECK VALVES AS REQUIRED TO PREVENT LOW-HEAD DRAINAGE.



PROJECT ENGINEER

PLANS APPROVAL DATE

DATE AND TIME OF PLAN REVIEW: 08/01/2020 10:00 AM
APPROVED BY: [Signature]
CITY OF LUBBOCK
612 CLAYTON COURT
SAN LUIS OBISPO, CA 95070
www.lubbockonline.com



LAGUNA LAKE DOG PARK
REVITALIZATION

IRRIGATION DETAILS & NOTES

PROJECT TITLE:

DESIGNED BY:

DRAWN BY:

CHECKED BY:

APPROVED BY:

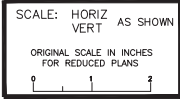
DATE:

CITY SPECIFICATION NO:

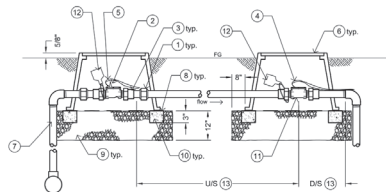
SHEET DES:

SHEET NO:

30 OF 31



DATE	REVISIONS	APPROVAL
	DESCRIPTION	DESIGNER

**GENERAL NOTES:**

- Locate valves in shrub areas whenever possible.
- Valve boxes shall be a maximum of 12" from walkways or curbs.
- Valve boxes shall be set parallel to walkways or curbs.
- Flow meter size and pipe size must be equal.
- No splices are allowed in wiring except at connectors shown in box.

INSTALLATION NOTES:

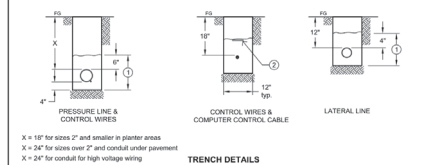
- PVC Union
- Master Valve - normally open
- PVC Male Adapter
- Flow Sensor Specialized Shielded Cable (EV-CAB-SEN) (1-Flow Meter, 1-Common)
- 14 gauge Master Valve Control Wires (1-Valve, 1-Common)
- Plastic Valve Box with bolt-down lid. Bolts to be stainless steel. Emboss "MV" and "FS" on lid
- Carson Industries 1419-3B (Purple) for Recycled Water Valves up to 2"
- Carson Industries 1324-3B (purple) for Recycled Water Valve 2½" and larger
- Irrigation Pressure Mainline
- Galvanized Cloth set under box - ½" Grid
- Gravel - ¾" to 1½" in size
- Cement Blocks or Brick continuous for box support
- Flow Sensor - Rain-Master
- Attach Recycled Water Warning Tab per Engineering Standard 8810 when used in recycled water system.
- US distance equals ten (10) times the Flow Meter size.
- DIS distance equals five (5) times the Flow Meter size.

REVISIONS	BY	APP	DATE
Est Note 11, add PVC Union	JCL	RL	6-12
Revised Note 2 and 11	AM	RL	11-03
Update Note 4 and 5	SR	RL	6-17

STANDARD CURRENT AS OF: AUGUST 2020

**MASTER VALVE & FLOW SENSOR**

8550

**THRUST BLOCKS****GENERAL NOTES:**

- Pressure lines shall be per the Standard Specifications unless otherwise noted.
- Lateral lines shall be Class 200 unless otherwise noted.
- Control wires shall be taped together at 2' intervals. Where control wires share a trench with pressure lines, they shall be placed below the 4 o'clock and 8 o'clock position under the pressure line.
- Thrust blocks shall be installed at mainline turns, elbows, tees, caps, plugs, changes in direction, at terminal points of all rubber gasket piping and at any other additional points shown on the plans.

INSTALLATION NOTES:

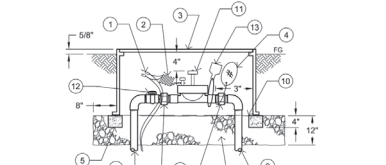
- Select backfill compacted to 90%, with native above to grade compacted to 85%. Native material to be free earth material free from clogs, rocks, and other large matter. If existing soil is not acceptable, the Contractor shall import soil as backfill.
- 3" Detectable Marker Tape marked "WATER" or "NON-POTABLE WATER" depending on the irrigation supply source. Ther Enterprises (distributed by T. Christy Enterprises)
- Direction of flow
- Class 3 PCC Thrust Block, sized as needed for pressure.

REVISIONS	BY	APP	DATE
New Standard	JCL	RL	1-04
Revised Lateral Line detail	DVB	RL	11-03
Revised Installation Note 1	JCL	RL	5-12

STANDARD CURRENT AS OF: AUGUST 2020

**TRENCH DETAIL & THRUST BLOCKS**

8510

**GENERAL NOTES:**

- Locate valves in shrub areas whenever possible.
- Valve boxes shall be a maximum of 12" from walkways or curbs.
- Valve boxes shall be set parallel to walkways or curbs.
- One valve per box.

INSTALLATION NOTES:

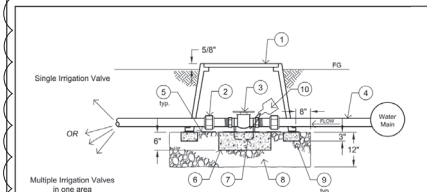
- Connector: King One Step Model 70-565 30 Volt Rain Bird Snipplette with leader #87-03 Grey PT-85
- 14 gauge Direct Burial Wire with 12" expansion coil (1- valve, 1- common)
- Plastic Valve Box with bolt-down lid, bolts to be stainless steel. Emboss Valve # on lid
- Carson Industries 1419-3B (purple) for Recycled Water Valves up to 2"
- Carson Industries 1324-3B (purple) for Recycled Water Valves 2½" and larger
- 2" diameter aluminum or plastic Valve Tag, attach with non-ferrous wire, engrave with valve station number.
- Cement Block (4 total) under each box corner
- Irrigation Lateral Line
- PVC Union
- Gravel - ¾" to 1½" in size
- Irrigation Pressure Line
- Galvanized Cloth set under box - ½" grid
- Control Valve: Introl 100 Series
- PVC Ball Valve
- Attach Recycled Water Warning Tag per Engineering Standard 8810 when used for recycled water

REVISIONS	BY	APP	DATE
Est Note 11, add PVC Union	JCL	RL	6-12
Add note 12	SR	RL	6-07
Revised Note 2	SR	RL	6-17

STANDARD CURRENT AS OF: AUGUST 2020

**ELECTRIC CONTROL VALVE & BOX**

8620

**GENERAL NOTES:**

- Isolation valves shall be installed for all irrigation valves.
- Locate valves in shrub areas whenever possible.
- Valve boxes shall be a maximum of 12" from walkways or curbs.
- Valve boxes shall be set parallel to walkways or curbs.
- Valve size and pipe size must be equal.

INSTALLATION NOTES:

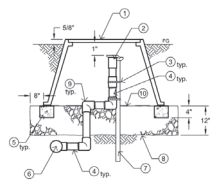
- Plastic Valve Box with bolt-down lid. Bolts to be stainless steel.
- Carson Industries 1419-3B (purple) for Recycled Water Valves up to 2"
- Carson Industries 1324-3B (purple) for Recycled Water Valves 2½" and larger
- PVC Union
- Brass Ball Valve
- Schedule 40 Pressure Line
- Galvanized Cloth set under box - ½" grid
- Concrete block below valve, extending 6" beyond outside dimensions of valve
- #10 Reinforcing Bar looped over valve - Only for valves 2½" and larger
- Gravel: ¾" to 1½" in size
- Cement Blocks or Brick continuous for box support
- Attach Recycled Water Warning Tag per Engineering Standard 8810 when used for recycled water.

REVISIONS	BY	APP	DATE
Add PVC Union, drafting edits	JCL	RL	6-12
Revised Notes and Detail	AM	RL	10-05
Revised Note 1, Add Note 13	SR	RL	3-05

STANDARD CURRENT AS OF: AUGUST 2020

**ISOLATION VALVE**

8640

**GENERAL NOTES:**

- Locate valves in shrub areas whenever possible.
- Valve boxes shall be a maximum of 12" from walkways or curbs.
- Valve boxes shall be set parallel to walkways or curbs.
- One valve per box.
- Areas where recycled water may be used shall have purple box covers.
- Pipe shall be Schedule 40 PVC unless otherwise noted.

INSTALLATION NOTES:

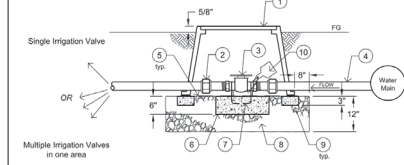
- Round Plastic Valve Box: Carson #910-12B Emboss "QC" on lid
- Quick Coupler Valve: Rain Bird #44, use #44NP for Recycled Water
- Stainless Steel Clamp
- Schedule 80 Nipple
- Cement Block (4 total) under each box corner when box is located in turf area
- Tee connected to irrigation pressure line
- ½" x 1" x 30" Angle Iron
- Gravel: ¾" to 1½" in size
- Schedule 80 El
- Galvanized Cloth set under box, ½" grid

REVISIONS	BY	APP	DATE
New Standard	JCL	RL	1-04
Revised Note 8 and 2	SR	RL	3-08
Drafting edits	JCL	AM	6-12

STANDARD CURRENT AS OF: AUGUST 2020

**QUICK COUPLER VALVE and BOX**

8630

**GENERAL NOTES:**

- Isolation valves shall be installed for all irrigation valves.
- Locate valves in shrub areas whenever possible.
- Valve boxes shall be a maximum of 12" from walkways or curbs.
- Valve boxes shall be set parallel to walkways or curbs.
- Valve size and pipe size must be equal.

INSTALLATION NOTES:

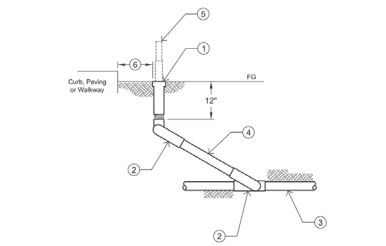
- Plastic Valve Box with bolt-down lid. Bolts to be stainless steel. Emboss "IV" on lid
- Carson Industries 1419-3B (purple) for Recycled Water Valves up to 2"
- Carson Industries 1324-3B (purple) for Recycled Water Valves 2½" and larger
- PVC Union
- Brass Ball Valve
- Schedule 40 Pressure Line
- Galvanized Cloth set under box - ½" grid
- Concrete block below valve, extending 6" beyond outside dimensions of valve
- #10 Reinforcing Bar looped over valve - Only for valves 2½" and larger
- Gravel: ¾" to 1½" in size
- Cement Blocks or Brick continuous for box support
- Attach Recycled Water Warning Tag per Engineering Standard 8810 when used for recycled water.

REVISIONS	BY	APP	DATE
Add PVC Union, drafting edits	JCL	RL	6-12
Revised Notes and Detail	AM	RL	10-05
Revised Note 1, Add Note 13	SR	RL	3-05

STANDARD CURRENT AS OF: AUGUST 2020

**ISOLATION VALVE**

8640

**GENERAL NOTES:**

- Where system is or has the potential to hook up to non-potable water, rotor head shall have a Reclaimed Water cover.
- Pipe material shall be Class 200 PVC unless otherwise noted.

INSTALLATION NOTES:

- Rotor or Spray Pop-up or H-pop Body, set even with finished grade.
- Triple Swing Joint, Marx (3)
- Irrigation Lateral Line
- Schedule 80 Nipple
- Pop-up height to be above matured plant material height.
- Distance must be 2 feet but may be reduced to 2 inches where overspray to adjacent impervious surface runs off to vegetated area.

REVISIONS	BY	APP	DATE
Added note 6	AM	RL	1-14
Revised offset from curb	DVB	RL	11-07
Pop-up height (Note 6)	JCL	RL	6-12

STANDARD CURRENT AS OF: AUGUST 2020

**POP-UP HEAD**

8650

SCALE: HORIZ VERT AS SHOWN
ORIGINAL SCALE IN INCHES FOR REDUCED PLANS

DATE	REVISIONS	APPROVAL
	DESCRIPTION	DESIGN
		CITY



PROJECT ENGINEER

PLANS APPROVAL DATE

City of Los Angeles
Department of Public Works
Engineering Division
612 CLAYTON COURT
SAN LUIS OBISPO, CA 95070
www.ci.losangeles.ca.us



LAGUNA LAKE DOG PARK
REVITALIZATION
IRRIGATION DETAILS & NOTES

PROJECT TITLE

SHEET TITLE

DESIGNED BY: SLB

DRAWN BY: MCC

CHECKED BY: EAS

APPROVED BY:

DATE: 12/21/2023

CITY SPECIFICATION NO: 200526-01

SHEET NO: 31

SHEET NO: 31

SHEET NO: 31

SHEET NO: 31

SHEET NO: 31

SHEET NO: 31

SHEET NO: 31

SHEET NO: 31

SHEET NO: 31

SHEET NO: 31

SHEET NO: 31

SHEET NO: 31

SHEET NO: 31

SHEET NO: 31

SHEET NO: 31

SHEET NO: 31

SHEET NO: 31

SHEET NO: 31